

# JBR Series 30 and 60 Amp Switched Receptacles

Dead Front Interlocked Construction; 600 Volts AC, 50-400 Hertz; Pressure Wire Terminals

## NEC/CEC:

Class I, Division 1 and 2, Groups B, C, D

Class II, Division 1 and 2, Groups F, G

Class III

NEMA 3<sup>+</sup>, 3R<sup>+</sup>, 4<sup>+</sup>, 4X<sup>+</sup>, 7BCD, 9FG

## Applications

- Locations where receptacles are used with stationary or portable electrically operated devices such as:
  - Lighting systems
  - Conveyors
  - Heaters
  - Motor-generator sets
  - Air conditioners
  - Compressors
  - Pumps

## Features

- Plug must be inserted into receptacle before the switch is in the on position.
- JBR is UL Listed for use with ACP Powertite™ and CPH plugs.
- Receptacle supplied with flip cover and screw cover.
- Positive polarization: only plugs of the same style, number of poles and amperage rating may be used with these receptacles.
- Terminal block provided in mounting box for ease of wiring. Factory wired between the receptacle and terminal block.
- Style 2 (shell and extra pole) grounding.
- Receptacles may be locked in the "OFF" position.
- Mounting box provided 1-1/2" vertical feed-thru conduit openings. Reducer bushings provided for 1-1/4" conduit opening. All conduit openings have NPT threads.
- O-ring gasket provided between the mounting box and receptacle cover.
- Internal switch provides safe and quick disconnect means. No need for separate disconnect switch.
- UL Classified for use with competitors like plugs ①.

## Standard Materials

- Receptacle housing and mounting box: copperfree (4/10 of 1% max.) aluminum
- Captive cover bolts, mounting feet and hinges: stainless steel

## Standard Finishes

- Receptacle and mounting box: epoxy powder coat

## Options

- For field installed drain and breather set, order one **ECD50B4X** drain and one **BRTB4X** breather. Both are NEMA 4X rated for Group B.
- Special Polarization: Prevents plug insertion in a receptacle or connector wired for a different voltage. In installations where there are different line voltages, the special polarization option is desirable. This allows only plugs and receptacles wired for the same line voltage to be mated together. The receptacle or connector interior is positioned 22-1/2", relative to the polarization rivet, to the right (as specified) of standard, and plug is polarized to correspond. Suffix **-P4** to receptacle or plug.

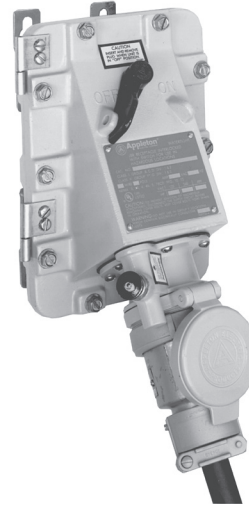
## NEC Certifications and Compliances

- UL Standard: UL 1010 (UL 1203), UL 894, UL 1682
- UL Listed: E10784
- CSA Standard: C22.2 No. 4, C22.2 No. 25, C22.2 No. 159, C22.2 No. 182.1
- CSA Certified: 038644

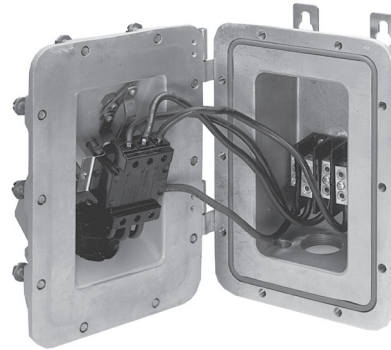
• Flip cover suitable for NEMA 3, 3R only.

▼ NEMA 4 rating maintained with Appleton NEMA 4 plug installed. Install screw cover for 4, 4X. Both covers are included with product.

① UL Classified for use with Crouse-Hinds APJ series plug. Crouse-Hinds is a registered trademark of Cooper Crouse-Hinds.



## Illustrated Features



- **Terminal block** provided for line connections.
- **Terminal** provided for grounding connection.
- **Receptacle** is prewired to the terminal block.
- **Disconnect switch** mounted on the cover assembly.

APPLETON

PLUGS AND RECEPTACLES: NEC/CEC HAZARDOUS LOCATION

# JBR Series 30 and 60 Amp Series Switched Receptacles

## Dead Front Interlocked Construction

30 and 60 Amp, 600 Vac, 50-400 Hz


### NEC/CEC:

Class I, Division 1 and 2, Groups B, C, D

Class II, Division 1 and 2, Groups F, G

Class III

NEMA 3•, 3R•, 4•, 4X•, 7BCD, 9FG

|   | Amp | Hub Size (Inches) ① | Wire/Poles | Terminal Block Wire Range | NEC Catalog Number | CEC Catalog Number   | Mating Plug Powertite | Mating Plug CPH ② |
|---|-----|---------------------|------------|---------------------------|--------------------|----------------------|-----------------------|-------------------|
|  | 30  | 1-1/2               | 2W, 3P     | #10 - #4                  | <b>JBR3023-150</b> | <b>JBR3023-150CN</b> | ACP3023BC             | CPH3023BC         |
|   |     | 1-1/2               | 3W, 4P     | CU-AL                     | <b>JBR3034-150</b> | <b>JBR3034-150CN</b> | ACP3034BC             | CPH3034BC         |
|   | 60  | 1-1/2               | 2W, 3P     | #4 - #6                   | <b>JBR6023-150</b> | <b>JBR6023-150CN</b> | ACP6023BC             | CPH6023BC         |
|   |     | 1-1/2               | 3W, 4P     | CU-AL                     | <b>JBR6034-150</b> | <b>JBR6034-150CN</b> | ACP6034BC             | CPH6034BC         |

### Accessories

| Description                        | Catalog Number  |
|------------------------------------|-----------------|
| Type 4X Drain (field installed)    | <b>ECD50B4X</b> |
| Type 4X Breather (field installed) | <b>BRTB4X</b>   |

### Replacement Parts

| Description   | Catalog Number   |
|---|------------------|
| 30 Amp, 2W, 3P Interlock Rod Assembly                   | <b>DEJS30</b>    |
| 30 Amp, 3W, 4P Interlock Rod Assembly                   | <b>DEJS30</b>    |
| 60 Amp, 2W, 3P Interlock Rod Assembly                   | <b>DEJS60A</b>   |
| 60 Amp, 3W, 4P Interlock Rod Assembly                   | <b>DEJS60B</b>   |
| 100 Amp, 2W, 3P Interlock Rod Assembly                  | <b>DEJS100A</b>  |
| 100 Amp, 3W, 4P Interlock Rod Assembly                  | <b>DEJS100B</b>  |
| 30 Amp, 2W, 3P Receptacle Interior                      | <b>EBRI3023</b>  |
| 30 Amp, 3W, 4P Receptacle Interior                      | <b>EBRI3034</b>  |
| 60 Amp, 2W, 3P Receptacle Interior                      | <b>EBRI6023</b>  |
| 60 Amp, 3W, 4P Receptacle Interior                      | <b>EBRI6034</b>  |
| 100 Amp, 2W, 3P Receptacle Interior                     | <b>EBRI1023</b>  |
| 100 Amp, 3W, 4P Receptacle Interior                     | <b>EBRI1034</b>  |
| 150 Amp, 3W, 4P Receptacle Interior                     | <b>EBRI15034</b> |
| 30 Amp Plug Clamping Ring (standard with 30 Amp models) | <b>30CRING</b>   |
| 30 Amp Screw Cover (for receptacle)                     | <b>30SCAP</b>    |

### Maximum Horsepower Ratings of Switch

| Phase Motor     | Amp | Motor Horsepower |         |         |
|-----------------|-----|------------------|---------|---------|
|                 |     | 240 Vac          | 480 Vac | 600 Vac |
| 1-Phase, 2W, 3P | 30  | 7.5              | 15      | 20      |
|                 | 60  | 10               | 15      | 20      |
| 3-Phase, 3W, 4P | 30  | 7.5              | 15      | 20      |
|                 | 60  | 10               | 25      | 30      |

• Flip cover suitable for NEMA 3, 3R only.

▼ NEMA 4 rating maintained with Appleton NEMA 4 plug installed. Install screw cover for 4, 4X. Both covers are included with product.


① Supplied with (2) 1-1/2" to 1-1/4" reducing bushings.

② 60 Amp CPH plugs with -BC suffix are NOT UL listed.


# JBR Series 30 and 60 Amp Switched Receptacles

NEC/CEC:  
Class I, Division 1 and 2, Groups B, C, D  
Class II, Division 1 and 2, Groups F, G  
Class III  
NEMA 3•, 3R•, 4▼, 4X▼, 7BCD, 9FG

## ACP Plugs for JBR Receptacles

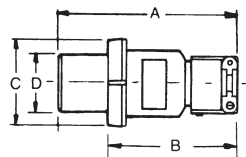
|   | Cable Dia. (Inches) | 30 Amp    |           | 60 Amp    |           |
|---|---------------------|-----------|-----------|-----------|-----------|
|   |                     | 2W, 3P    | 3W, 4P    | 2W, 3P    | 3W, 4P    |
|  | .500 to 1.125       | ACP3023BC | ACP3034BC | —         | —         |
|   | .500 to 1.375       | —         | —         | ACP6023BC | ACP6034BC |

## CPH Plugs for JBR Receptacles

|   | Cable Dia. (Inches) | 30 Amp    |           | 60 Amp ①  |           |
|---|---------------------|-----------|-----------|-----------|-----------|
|   |                     | 2W, 3P    | 3W, 4P    | 2W, 3P    | 3W, 4P    |
|  | .500 to 1.125       | CPH3023BC | CPH3034BC | —         | —         |
|   | .500 to 1.375       | —         | —         | CPH6023BC | CPH6034BC |

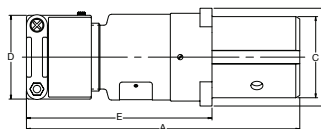
## Dimensions in Millimeters (Inches)

### ACP Plugs



| Max. Amp | No. Poles | Dimensions in Millimeters (Inches) |              |             |             |
|----------|-----------|------------------------------------|--------------|-------------|-------------|
|          |           | A                                  | B            | C           | D           |
| 30       | 2,3,4     | 152.4 (6.00)                       | 120.6 (4.75) | 79.5 (3.13) | 47.2 (1.86) |
| 60       | 2,3       | 198.3 (7.81)                       | 125.4 (4.94) | 88.9 (3.50) | 56.6 (2.23) |
| 60       | 4         | 198.3 (7.81)                       | 125.4 (4.94) | 96.7 (3.81) | 64.7 (2.55) |

### CPH Plugs



| Max. Amp | Wire/Pole      | Dimensions in Millimeters (Inches) |             |             |             |              |
|----------|----------------|------------------------------------|-------------|-------------|-------------|--------------|
|          |                | A                                  | B           | C           | D           | E            |
| 30       | 2W, 3P; 3W, 4P | 155.7 (6.13)                       | 60.4 (2.38) | 47.2 (1.86) | 6.68 (2.63) | 112.7 (4.44) |
| 60       | 2W, 3P         | 214.3 (8.44)                       | 77.7 (3.06) | 77.7 (3.06) | 6.68 (2.63) | 144.5 (5.69) |
| 60       | 3W, 4P         | 214.3 (8.44)                       | 77.7 (3.06) | 64.7 (2.55) | 6.68 (2.63) | 144.5 (5.69) |

• Flip cover suitable for NEMA 3, 3R only.

▼ NEMA 4 rating maintained with Appleton NEMA 4 plug installed. Install screw cover for 4, 4X. Both covers are included with product.

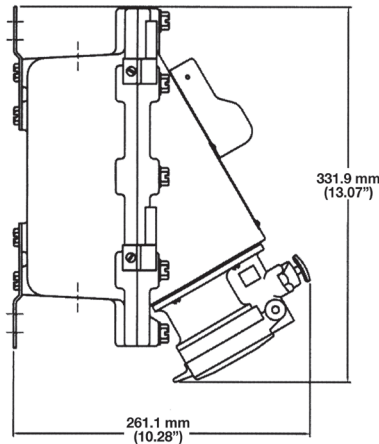
① 60 Amp CPH plugs with -BC suffix are NOT UL listed.

# JBR Series 30 and 60 Amp Switched Receptacles

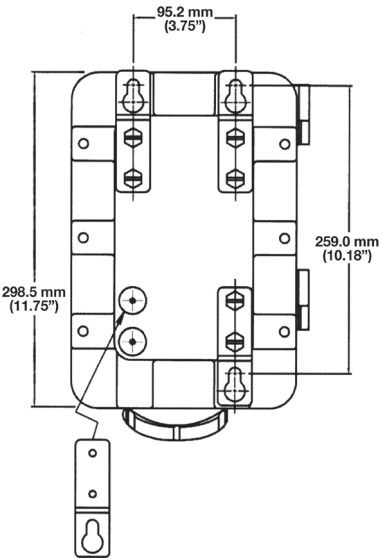
NEC/CEC:  
Class I, Division 1 and 2, Groups B, C, D  
Class II, Division 1 and 2, Groups F, G  
Class III  
NEMA 3•, 3R•, 4▼, 4X▼, 7BCD, 9FG

Dimensions in Millimeters (Inches)

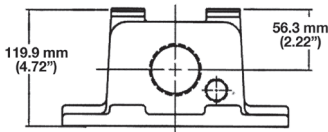
Shown with Flip Cover



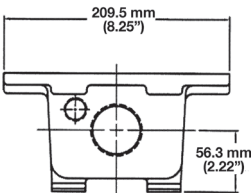
Drilling Plans for Mounting Bolts



Top View



Bottom View



• Flip cover suitable for NEMA 3, 3R only.  
▼ NEMA 4 rating maintained with Appleton NEMA 4 plug installed. Install screw cover for 4, 4X. Both covers are included with product.