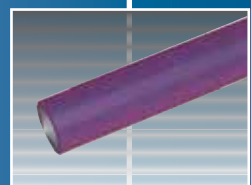
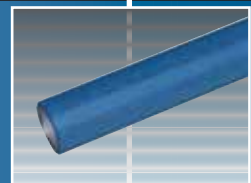
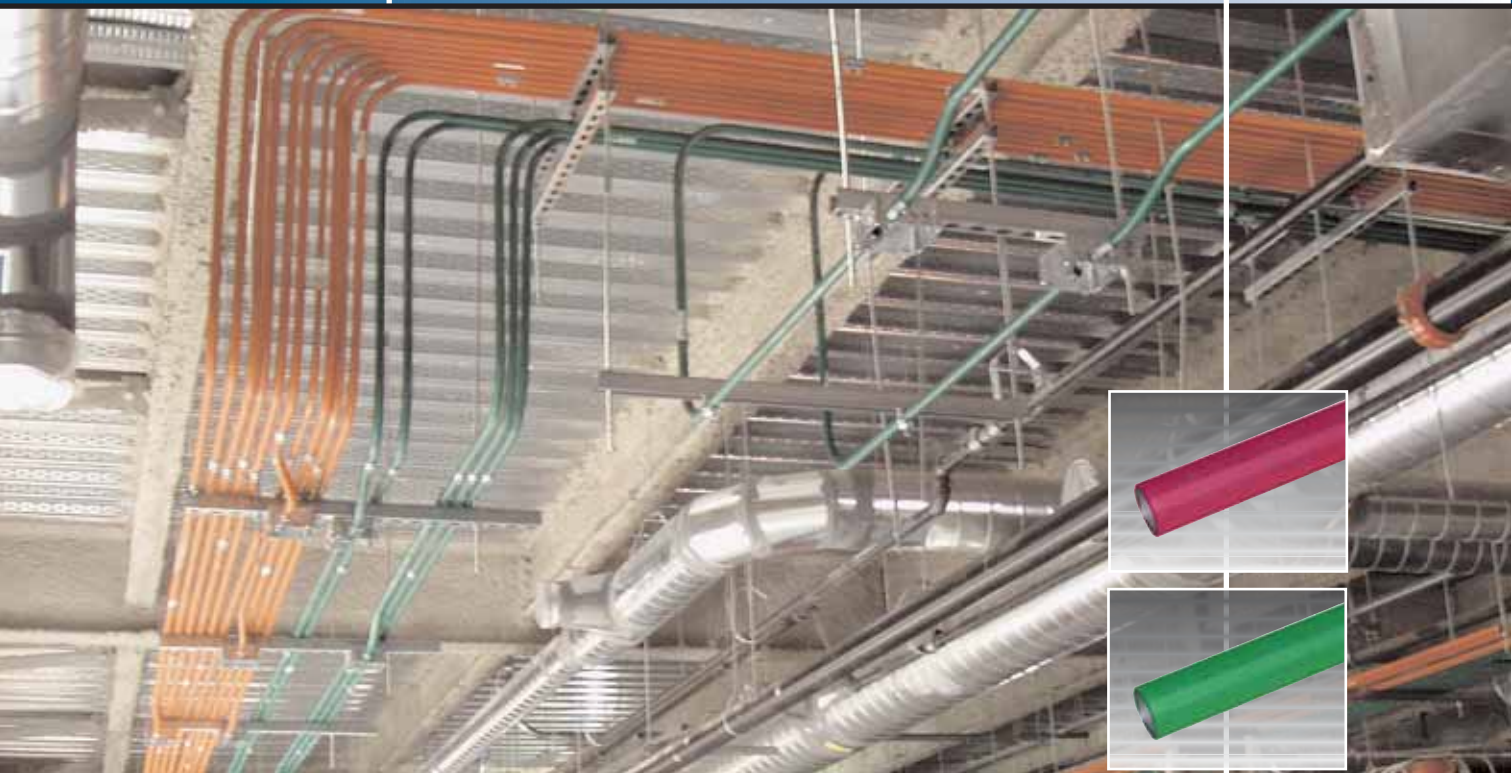


TRUE COLOR™ EMT

Product Catalog



- All the benefits of E-Z Pull® EMT
- Instant identification of multiple circuits
- Fire Alarm™ Red EMT
- Healthcare Green EMT
- Data Com Blue EMT
- Available in 8 color coatings

TRUE COLOR™ EMT

E-Z Pull® Steel EMT with Distinctive Color Identification

TRUE COLOR™ EMT (Electrical Metal Tubing) is available in 8 vibrant colors to provide instant identification of multiple circuit systems. The colors can separate fire alarm circuits from



power wiring from data com cables, and eliminate the unnecessary labor of applying spray paints, powder coats, or tapes in the field.

- Hot galvanized with a vibrant top coat for easy identification and durability
- Excellent mechanical protection for conductors
- Ductility for faster and easier bending
- E-Z Pull® interior finish provides a smooth interior surface for fast, less labor-intensive wire-pulling
- Quick and easy installation
- Recognized as equipment grounding conductor per NEC 250.118
- Provides redundant grounding in patient care areas with addition of supplemental grounding conductor
- Superb EMF shielding characteristics
- Listed to UL Safety Standard 797 and manufactured in accordance with ANSI C80.3

Weights and Dimensions (Standard sizes listed on back cover)

Designators		Approx. Wt. Per 100 Ft. (30.5m)		Outside Diameter ¹ (O.D.)		Nominal Wall Thickness		Quantity In Master Bundle*	
Trade Size	Metric	lb.	kg	in.	mm	in.	mm	ft.*	m*
1/2	16	30	13.6	0.706	17.9	0.042	1.07	3500*	1067.5*
3/4	21	46	20.9	0.922	23.4	0.049	1.25	2500*	762.5*
1	27	67	30.4	1.163	29.5	0.057	1.45	1500*	457.5*
1-1/4	35	101	45.8	1.510	38.4	0.065	1.65	2000	610.0
1-1/2	41	116	52.6	1.740	44.2	0.065	1.65	1500	457.5
2	53	148	67.1	2.197	55.8	0.065	1.65	1200	366.0
2-1/2	63	216	98.0	2.875	73.0	0.072	1.83	610	186.1
3	78	263	119.3	3.500	88.9	0.072	1.83	510	155.6
3-1/2	91	349	158.3	4.000	101.6	0.083	2.11	370	112.9
4	103	393	178.2	4.500	114.3	0.083	2.11	300	91.5

¹ Outside diameter tolerances:

- +/- .005 in. (.13mm) for trade sizes 1/2 (16) through 2 (53);
- +/- .010 in. (.25mm) for trade size 2-1/2 (63);
- +/- .015 in. (.38mm) for trade size 3 (78);
- +/- .020 in. (.51mm) for trade sizes 3-1/2 (91) and 4 (103).

* Bundle Sizes vary between colors for trade sizes 1/2, 3/4, and 1.

- 1/2 in. Red EMT master bundle size: 7000 Ft./ 2135.0 m
- 3/4 in. Red EMT master bundle size: 5000 Ft./ 1525.0 m
- 1 in. Fire Alarm Red, and Blue EMT master bundle size: 3000 Ft./ 915.0 m

NOTE: Length = 10 ft. (3.05m) with a tolerance of ± .25 in. (6.00 mm)



Allied Tube & Conduit
Registered to ISO 9001:2000
File Numbers A2106, A1654, A12768

Steel EMT with the TRUE COLOR™ color process is a trademark of Allied Tube & Conduit Corporation.

TRUE COLOR™ EMT

Suggested Applications



Black EMT

- Blends in dark colored areas
- Open architecture

Fire Alarm™ EMT

- Emergency circuits
- Fire alarm and Security systems



Orange EMT

- Construction/research areas
- Fiber optic systems
- Auto repair/maintenance

Yellow EMT

- High voltage wiring
- Caution areas
- Special equipment



Green EMT

- Hospital and healthcare areas
- Nurse call stations
- Critical circuits

Blue EMT

- Low voltage wiring
- Data com/video
- Network security



Purple

- Specialty wiring systems
- Security systems

White EMT

- Blends in light colored areas
- Open architecture





Available TRUE COLOR™ EMT trade sizes* include

Black	1/2	3/4	1	1 1/4	1 1/2	2	*	*	*	*
Red	1/2	3/4	1	1 1/4	1 1/2	2	2 1/2	3	*	4
Orange	1/2	3/4	1	1 1/4	1 1/2	2	*	*	*	*
Yellow	1/2	3/4	1	1 1/4	1 1/2	2	*	*	*	*
Green	1/2	3/4	1	1 1/4	1 1/2	2	*	*	*	*
Blue	1/2	3/4	1	1 1/4	1 1/2	2	*	*	*	*
Purple	1/2	3/4	1	1 1/4	1 1/2	2	*	*	*	*
White	1/2	3/4	1	1 1/4	1 1/2	2	*	*	*	*
Silver	1/2	3/4	1	1 1/4	1 1/2	2	2 1/2	3	3 1/2	4

* Other sizes available through special orders

- ALLIED TUBE & CONDUIT® - ELECTRICAL
16100 S. Lathrop Avenue
Harvey, IL 60426
Tel. 708-339-0610
800-882-5543
Fax 708-339-0615



Allied Tube & Conduit
Registered to ISO 9001:2000
File Numbers A2106, A1654, A12768

Electrical & Support Division

www.alliedeg.com

• Allied Tube & Conduit® • AFC Cable Systems® • Power-Strut® & Unistrut® Metal & Fiberglass Framing • Cope™ Cable Tray

The trademarks, logos, and service marks displayed on this brochure are owned or licensed by Tyco International Ltd., or its subsidiaries, affiliates, and others (collectively "Trademarks"). All Trademarks not owned by Tyco International Ltd. are the property of their respective owners, and are used with permission or allowed under applicable laws.