

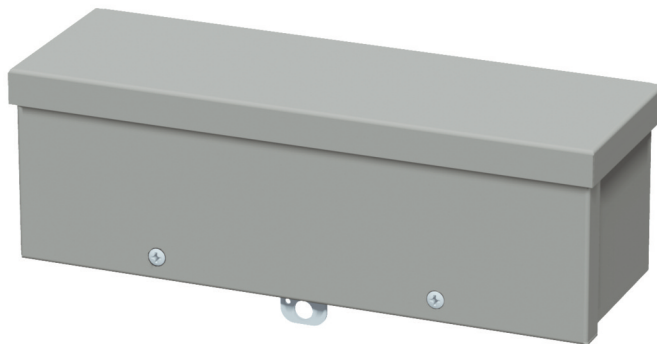
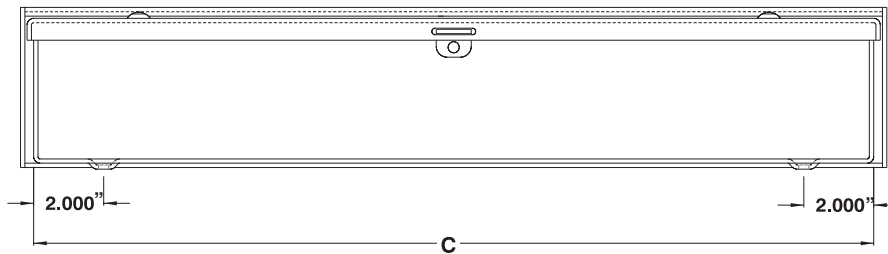
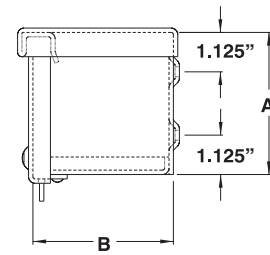
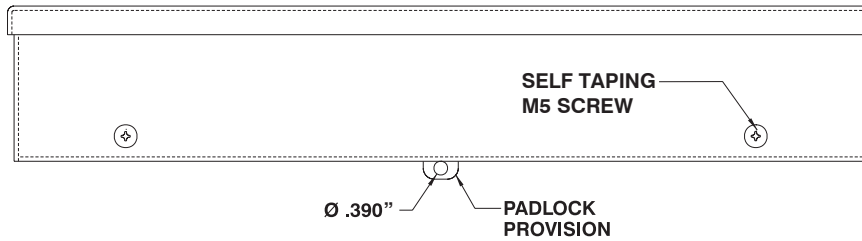
WEATHERPROOF WIRING TROUGHS

The **1300 CH** are specially designed for outdoor wiring installations in order to protect against rain, sleet and snow.

CSA Certified / UL Listed / NEMA / EEMAC 3R / IP32

Technical specifications:

- Made of high quality steel.
- The top of the enclosure serves as a dripshield.
- The cover slips on and is fastened by screws.
- Four internal mounting holes are provided.
- Finished with heat fused powder paint, electrostatically applied on a pretreated base.
- Paint color : ANSI/ASA 61 smooth gray.



CATALOG NUMBER	DIMENSIONS			SHIP WGHT LBS.
	A	B	C	
1300 CH040412	4	4	12	6
1300 CH040424	4	4	24	10
1300 CH040436	4	4	36	16
1300 CH040448	4	4	48	20
1300 CH040460	4	4	60	25
1300 CH060612	6	6	12	9
1300 CH060624	6	6	24	16
1300 CH060636	6	6	36	23
1300 CH060648	6	6	48	29
1300 CH060660	6	6	60	32
1300 CH060672	6	6	72	43
1300 CH080824	8	8	24	15
1300 CH080836	8	8	36	19
1300 CH080848	8	8	48	33
1300 CH080860	8	8	60	41
1300 CH121236	12	12	36	35
1300 CH121260	12	12	60	57

CUSTOMIZE THIS
ENCLOSURE WITH **BOXCAD**
SIZE - COLOR - CUT-OUTS



p.603

