

# LEDVANCE LUMINAIRES

## DUAL SELECTABLE

## AREA FLOOD

### LEDVANCE LUMINAIRE SPECIFICATION DATA

Catalog #	Comments
Project	
Type	
Prepared by	

### PERFORMANCE CLASS™



### APPLICATION

The Performance Class Dual Selectable Area Flood offers 3 CCTs and 3 lumen outputs in the same product, an integrated 7-pin NEMA receptacle and field installable screw-in sensors. Available in multiple distribution options, it is ideal for parking lots, walkways and general outdoor area lighting.

### BENEFITS & FEATURES

- Up to 160 LPW
- Selectable color temperature: 3000K, 4000K, 5000K
- CRI>80
- Selectable wattage and lumens:
  - 40/60/80W | 6,400/9,600/12,800 lm
  - 90/120/150W | 14,400/19,200/24,000 lm
  - 180/240/300W | 28,800/38,400/48,000 lm
- Universal mounting bracket
- DLC 5.1 Premium Listing assures high energy efficiency and qualifies this product for utility rebates
- Type II, III, IV, V, and front row distribution options
- Field installable motion/daylight sensor
- Compatible with LEDVANCE LINK™ Bluetooth® controls and sensors
- 7-pin NEMA receptacle + shorting cap (optional photocell available as an accessory)



## ELECTRICAL

- 120-347 VAC  
(optional 277-480 Vac)
- Power Factor > 0.9
- THD < 20%
- Dimmable 0-10V
- 10kV Surge protection

## RATED LIFE

- 100,000 hours (L<sub>70</sub>) @ 25°C

## OPERATING TEMPERATURE

- -40°F to +122°F (-40°C to +50°C)

## CERTIFICATIONS & LISTINGS

- cULus listed to UL1598 standards
- RoHs
- FCC
- IP65, wet location
- DLC 5.1 Premium

## WARRANTY

- 5 year
- NLB Trusted Warranty Program

## INSTALLATION

- Universal mounting bracket included for square and round pole mounting as well as slip fitter mount

## ORDERING GUIDE

AREAFLD	6A	SXXX	XXX	D	8	SCX	X	X
PRODUCT NAME	GENERATION	WATTAGE	VOLTAGE	DIMMING	CRI	COLOR TEMPERATURE	DISTRIBUTION	COLOR/FINISH
AREAFLD = Area Flood	6A = Generation 6A	S080 = 40/60/80W S150 = 90/120/150W S300 = 180/240/300W	UNH = 120-347V HUV = 277-480V	D = 0-10V Dimming	80 = >80 CRI	SC2 = 3000/4000/5000K	T2 = T2 Distribution T3 = T3 Distribution T4 = T4 Distribution T5 = T5 Distribution FR = Front Row Distribution	BZ = Bronze

## ORDERING INFORMATION

ITEM #	ORDERING ABBREVIATION	WATTAGE (W)	INPUT VOLTAGE (V)	DIM. (V)	CRI	COLOR TEMP (CCT)	DISTRIBUTION	TOTAL LUMENS @ 4000K (LM)	DLC	LPW @ 4000K	BUG RATING	MTO**
63845	AREAFLD6AS080UNHDSC2T2BZ	40/60/80	120-347	0-10	>80	3000/4000/5000	T2 Distribution	6000/9000/12000	5.1 Prem*	Up to 160	B3-U0-G3	✓
63846	AREAFLD6AS080UNHDSC2T3BZ	40/60/80	120-347	0-10	>80	3000/4000/5000	T3 Distribution	6000/9000/12000	5.1 Prem*	Up to 160	B3-U0-G3	–
63847	AREAFLD6AS080UNHDSC2T4BZ	40/60/80	120-347	0-10	>80	3000/4000/5000	T4 Distribution	6000/9000/12000	5.1 Prem*	Up to 160	B3-U0-G3	–
63848	AREAFLD6AS080UNHDSC2T5BZ	40/60/80	120-347	0-10	>80	3000/4000/5000	T5 Distribution	6000/9000/12000	5.1 Prem*	Up to 160	B3-U0-G1	–
63849	AREAFLD6AS080UNHDSC2FRBZ	40/60/80	120-347	0-10	>80	3000/4000/5000	FR Distribution	6000/9000/12000	5.1 Prem*	Up to 160	B3-U0-G3	✓
63963	AREAFLD6AS080HUV DSC2T2BZ	40/60/80	277-480	0-10	>80	3000/4000/5000	T2 Distribution	6000/9000/12000	5.1 Prem*	Up to 160	B3-U0-G3	✓
63964	AREAFLD6AS080HUV DSC2T3BZ	40/60/80	277-480	0-10	>80	3000/4000/5000	T3 Distribution	6000/9000/12000	5.1 Prem*	Up to 160	B3-U0-G3	✓
63965	AREAFLD6AS080HUV DSC2T4BZ	40/60/80	277-480	0-10	>80	3000/4000/5000	T4 Distribution	6000/9000/12000	5.1 Prem*	Up to 160	B3-U0-G3	✓
63966	AREAFLD6AS080HUV DSC2T5BZ	40/60/80	277-480	0-10	>80	3000/4000/5000	T5 Distribution	6000/9000/12000	5.1 Prem*	Up to 160	B3-U0-G1	✓
63967	AREAFLD6AS080HUV DSC2FRBZ	40/60/80	277-480	0-10	>80	3000/4000/5000	FR Distribution	6000/9000/12000	5.1 Prem*	Up to 160	B3-U0-G3	✓
63850	AREAFLD6AS150UNHDSC2T2BZ	90/120/150	120-347	0-10	>80	3000/4000/5000	T2 Distribution	13500/18000/22500	5.1 Prem*	Up to 160	B4-U0-G4	✓
63851	AREAFLD6AS150UNHDSC2T3BZ	90/120/150	120-347	0-10	>80	3000/4000/5000	T3 Distribution	13500/18000/22500	5.1 Prem*	Up to 160	B4-U0-G4	–
63852	AREAFLD6AS150UNHDSC2T4BZ	90/120/150	120-347	0-10	>80	3000/4000/5000	T4 Distribution	13500/18000/22500	5.1 Prem*	Up to 160	B3-U0-G3	–
63853	AREAFLD6AS150UNHDSC2T5BZ	90/120/150	120-347	0-10	>80	3000/4000/5000	T5 Distribution	13500/18000/22500	5.1 Prem*	Up to 160	B4-U0-G2	–
63854	AREAFLD6AS150UNHDSC2FRBZ	90/120/150	120-347	0-10	>80	3000/4000/5000	FR Distribution	13500/18000/22500	5.1 Prem*	Up to 160	B4-U0-G4	✓
63968	AREAFLD6AS150HUV DSC2T2BZ	90/120/150	277-480	0-10	>80	3000/4000/5000	T2 Distribution	13500/18000/22500	5.1 Prem*	Up to 160	B4-U0-G4	✓

## ORDERING INFORMATION (CONTINUED)

ITEM #	ORDERING ABBREVIATION	WATTAGE (W)	INPUT VOLTAGE (V)	DIM. (V)	CRI	COLOR TEMP (CCT)	DISTRIBUTION	TOTAL LUMENS @ 4000K (LM)	DLC	LPW @ 4000K	BUG RATING	MTO**
63969	AREAFLD6AS150HUV DSC2T3BZ	90/120/150	277-480	0-10	>80	3000/4000 /5000	T3 Distribution	13500/18000 /22500	5.1 Prem*	Up to 160	B4-U0-G4	✓
63970	AREAFLD6AS150HUV DSC2T4BZ	90/120/150	277-480	0-10	>80	3000/4000 /5000	T4 Distribution	13500/18000 /22500	5.1 Prem*	Up to 160	B3-U0-G3	✓
63971	AREAFLD6AS150HUV DSC2T5BZ	90/120/150	277-480	0-10	>80	3000/4000 /5000	T5 Distribution	13500/18000 /22500	5.1 Prem*	Up to 160	B4-U0-G2	✓
63972	AREAFLD6AS150HUV DSC2FRBZ	90/120/150	277-480	0-10	>80	3000/4000 /5000	FR Distribution	13500/18000 /22500	5.1 Prem*	Up to 160	B4-U0-G4	✓
63855	AREAFLD6AS300UNH DSC2T2BZ	180/240/300	120-347	0-10	>80	3000/4000 /5000	T2 Distribution	27000/36000 /45000	5.1 Prem*	Up to 160	B5-U0-G5	✓
63856	AREAFLD6AS300UNH DSC2T3BZ	180/240/300	120-347	0-10	>80	3000/4000 /5000	T3 Distribution	27000/36000 /45000	5.1 Prem*	Up to 160	B5-U0-G5	-
63857	AREAFLD6AS300UNH DSC2T4BZ	180/240/300	120-347	0-10	>80	3000/4000 /5000	T4 Distribution	27000/36000 /45000	5.1 Prem*	Up to 160	B5-U0-G5	-
63858	AREAFLD6AS300UNH DSC2T5BZ	180/240/300	120-347	0-10	>80	3000/4000 /5000	T5 Distribution	27000/36000 /45000	5.1 Prem*	Up to 160	B5-U0-G3	-
63859	AREAFLD6AS300UNH DSC2FRBZ	180/240/300	120-347	0-10	>80	3000/4000 /5000	FR Distribution	27000/36000 /45000	5.1 Prem*	Up to 160	B5-U0-G5	✓
63973	AREAFLD6AS300HUV DSC2T2BZ	180/240/300	277-480	0-10	>80	3000/4000 /5000	T2 Distribution	27000/36000 /45000	5.1 Prem*	Up to 160	B5-U0-G5	✓
63974	AREAFLD6AS300HUV DSC2T3BZ	180/240/300	277-480	0-10	>80	3000/4000 /5000	T3 Distribution	27000/36000 /45000	5.1 Prem*	Up to 160	B5-U0-G5	✓
63975	AREAFLD6AS300HUV DSC2T4BZ	180/240/300	277-480	0-10	>80	3000/4000 /5000	T4 Distribution	27000/36000 /45000	5.1 Prem*	Up to 160	B5-U0-G5	✓
63976	AREAFLD6AS300HUV DSC2T5BZ	180/240/300	277-480	0-10	>80	3000/4000 /5000	T5 Distribution	27000/36000 /45000	5.1 Prem*	Up to 160	B5-U0-G3	✓
63977	AREAFLD6AS300HUV DSC2FRBZ	180/240/300	277-480	0-10	>80	3000/4000 /5000	FR Distribution	27000/36000 /45000	5.1 Prem*	Up to 160	B5-U0-G5	✓

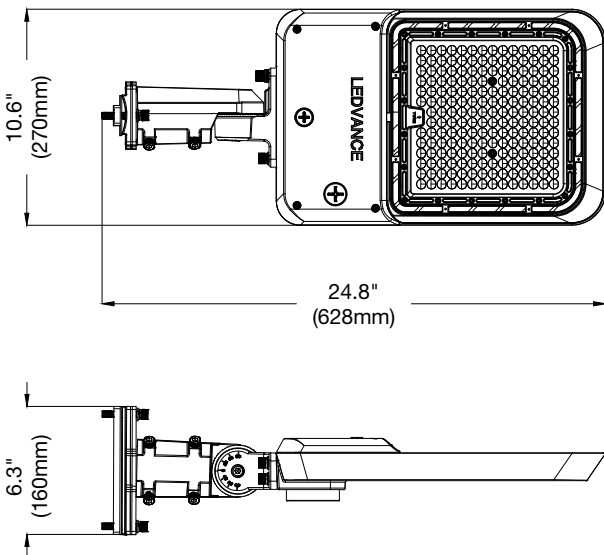
\*Coming Soon

\*\*Made to Order

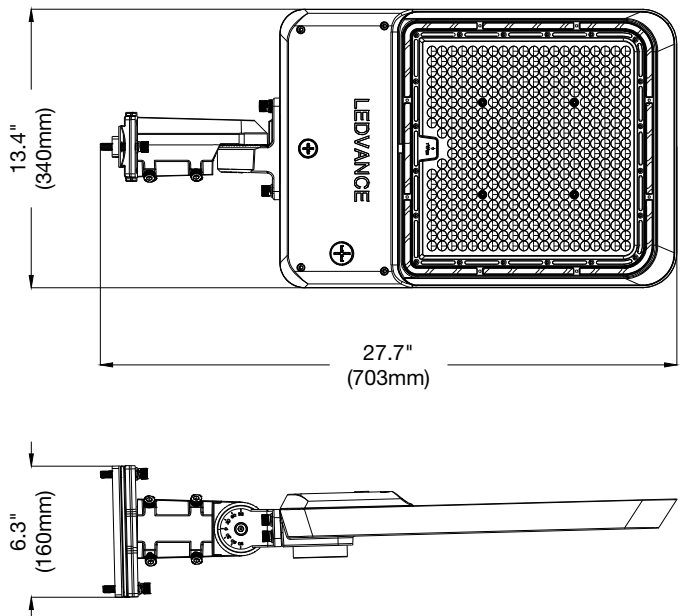
## PHYSICAL INFORMATION

LUMINAIRE DESCRIPTION	LENGTH IN (MM)	WIDTH IN (MM)	HEIGHT IN (MM)	WEIGHT LB (KG)	EPA
80W/150W	24.8 (628)	10.6 (270)	6.3 (160)	13 (5.9)	1.65 ft <sup>2</sup>
300W	27.7 (703)	13.4 (340)	6.3 (160)	16 (7.26)	2.15 ft <sup>2</sup>

80W-150W

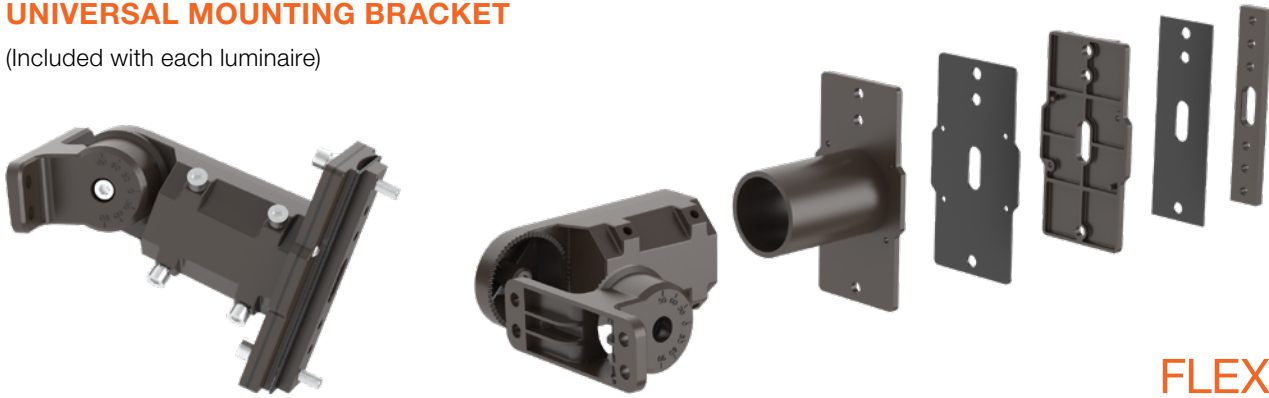


300W



## UNIVERSAL MOUNTING BRACKET

(Included with each luminaire)



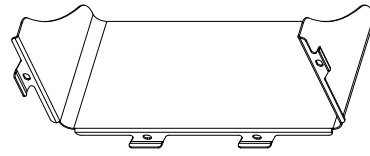
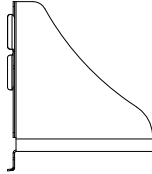
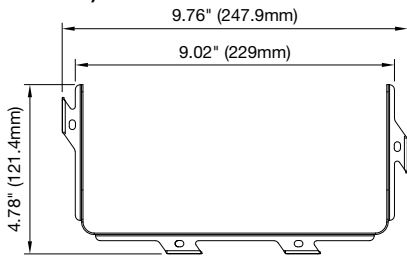
**FLEXMOUNT**

## ACCESSORIES

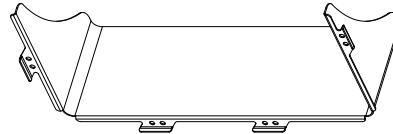
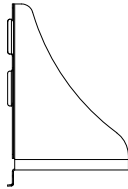
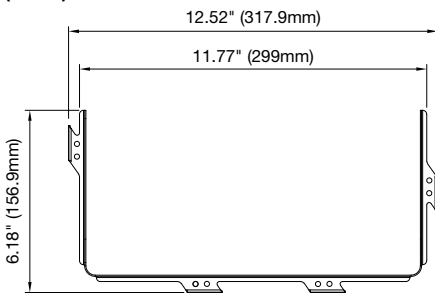
ITEM #	ORDERING ABBREVIATION	ITEM DESCRIPTION
<b>Visors</b>		
63959	AREAFLD6ASMVISORLRBZ	Small Visor, left and right, Bronze
63978	AREAFLD6ASMVISORFBBZ	Small Visor, front and back, Bronze
63960	AREAFLD6ALRGVISORLRBZ	Large Visor, left and right, Bronze
63979	AREAFLD6ALRGVISORFBBZ	Large Visor, front and back, Bronze
<b>Bird Spikes</b>		
63961	AREAFLD6ASMBIRDSPIKE	Small Birdspike
63962	AREAFLD6ALRGBIRDSPIKE	Large Birdspike
<b>Sensors</b>		
63748	AREA/PIRMOTIONDAYSENSOR/BZ	Field installable PIR Motion/Daylight Sensor, IP65, Max. mounting height 39ft, Bronze
65732	AREA/MWMOTIONDAYSENSOR/BZ	Field installable Microwave Motion/Daylight Sensor, IP65, Max. mounting height 49ft, Bronze
62664	HIGHBAYPIRMOTIONDAYSENSOR2	Field installable PIR Motion/Daylight Sensor, IP65, Max. mounting height 39ft, White
65622	HIGHBAYMOTIONDAYSENSOR	Field installable Microwave Motion/Daylight Sensor, IP65, Max. mounting height 49ft, White
65623	REMOTE/MOTIONDAY/001	Remote control for Motion/Daylight Sensors – Remote is required to change default settings
<b>Photocells</b>		
61393	AREAFLDXANEMAPHOTOCELLUNV	Area/Flood NEMA photocell 120-277V
61394	AREAFLDXANEMAPHOTOCELL347	Area/Flood NEMA photocell 347V
61395	AREAFLDXANEMAPHOTOCELL480	Area/Flood NEMA photocell 480V
<b>LEDVANCE LINK™ Accessories</b>		
63652	SENSORADAPTER1A	Sensor adapter for LEDVANCE LINK™ sensors
62634	SENSORHB/PIRAUX12V/BLE	Bluetooth® mesh wireless controller and sensor, LEDVANCE LINK™
62630	ADAPTER/AUX12V/BLE	Bluetooth® Mesh low voltage controller-BLE enabled fixture

## ACCESSORIES: PHYSICAL INFORMATION

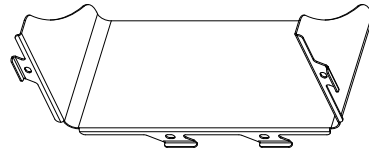
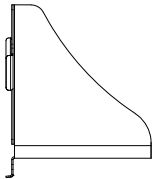
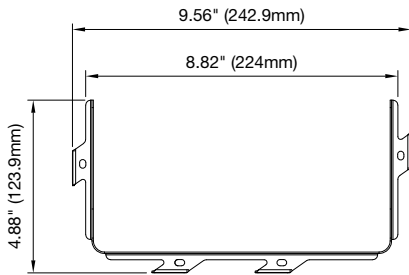
### FRONT AND BACK VISOR (80W-150W)



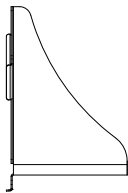
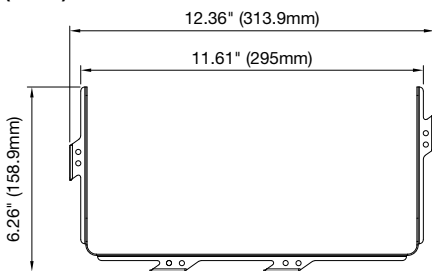
### FRONT AND BACK VISOR (300W)



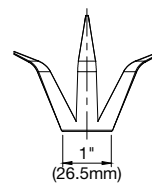
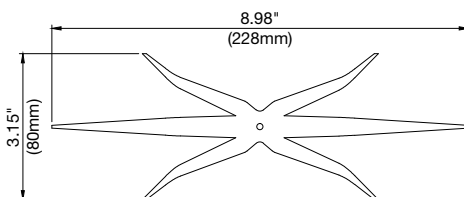
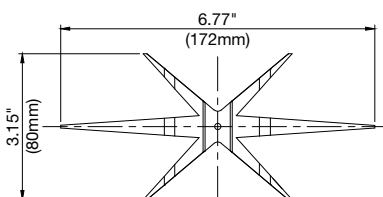
### RIGHT AND LEFT VISOR (80W-150W)



### RIGHT AND LEFT VISOR (300W)

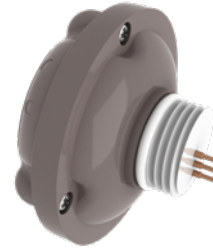


### BIRD SPIKE



## OPTIONAL MOTION/DAYLIGHT SENSOR DEFAULT SETTINGS

Detection Area	100%
Hold time – Time fixtures stays at 100% after last motion before dimming	10 minutes
Daylight threshold – Light level above which lights will remain off	50 Lux
Stand-by period – Time light remains dimmed before shutting off	60 minutes
Stand-by Dimming – dimming level of light during the stand-by period	30%



**MOTION SENSOR**  
**Bronze: 63748/65732**  
**White: 62664/65662**



**REMOTE**  
**(65623)**

## OPTIONAL LEDVANCE LINK ACCESSORIES



**BLUETOOTH® MESH WIRELESS CONTROLLER & SENSOR, LEDVANCE LINK (62634)**



**SENSOR ADAPTER FOR LEDVANCE LINK SENSORS (63652)**

## BENEFITS & FEATURES

- The LEDVANCE LINK Bluetooth® Mesh Low Voltage components use Bluetooth technology for easy and secure wireless communication
- Enables regular LEDVANCE luminaires to become Bluetooth enabled and allows for luminaires to be turned on/off and dimmed (manual or auto)
- Components can be used up to 40ft fixture mounting height
- Control using either the LEDVANCE LINK™ smart phone app or the wireless wall switch

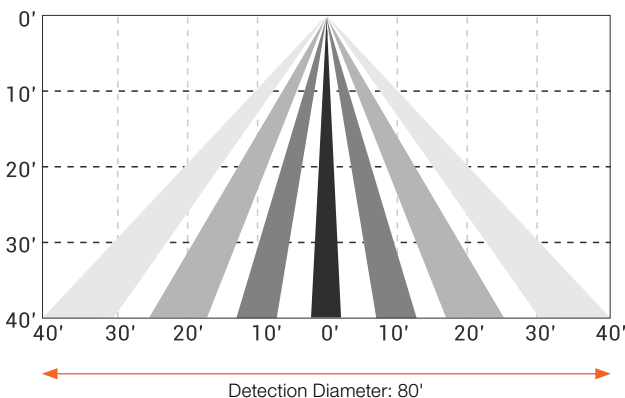
## SENSOR INFORMATION

- Input voltage: 12Vdc
- Bluetooth transmit line distance: 100ft
- Detection range: 48-80ft
- Rated current: 55mA
- Dimming: 0-10V
- Infrared sensor: Omni-directional quad element pyroelectric
- Mounting height: 15-40ft
- Detectable speed: 1~10 ft/sec (0.3~3 m/sec)
- Operating temperature: -40°F~131°F (-40°C~55°C)
- Operating humidity: IP66
- Protocol: Bluetooth® Mesh BLE Proprietary

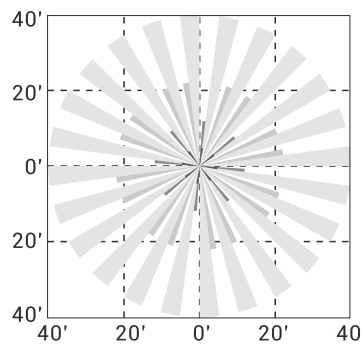


### MOUNTING HEIGHT: UP TO 40'

#### Detection Coverage Side View



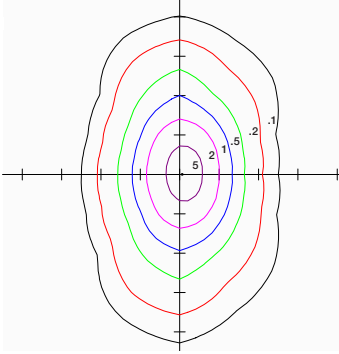
#### Detection Coverage Top View



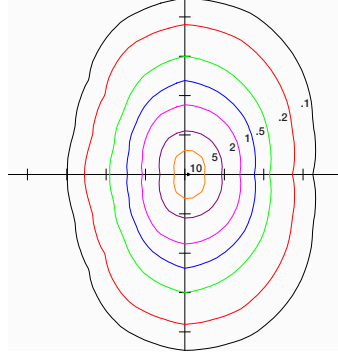
# PHOTOMETRIC INFORMATION

## HORIZONTAL ISO FOOT-CANDLE PLOT

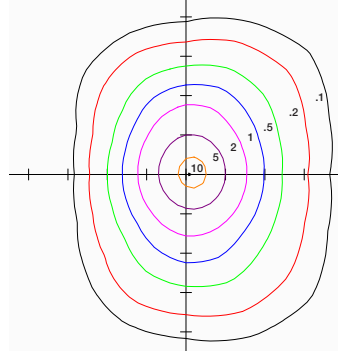
80W Fixture, Type II Distribution, Mounted at 20' mounting height



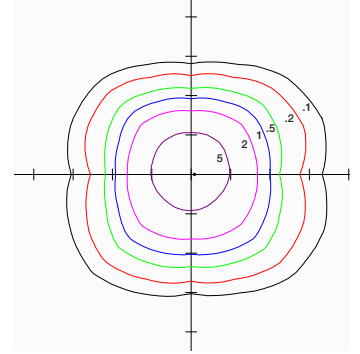
80W Fixture, Type III Distribution, Mounted at 15' mounting height



80W Fixture, Type IV Distribution, Mounted at 15' mounting height

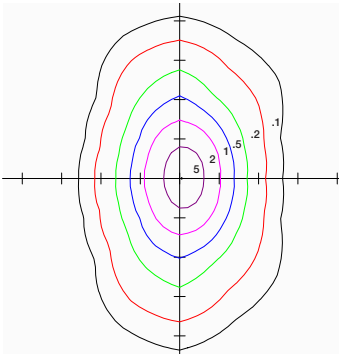


80W Fixture, Type V Distribution, Mounted at 15' mounting height

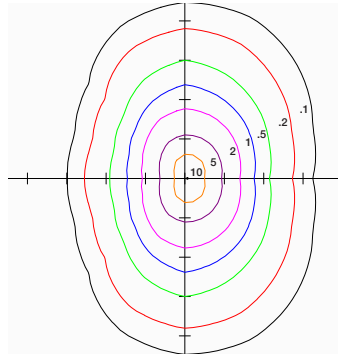


<b>MOUNTING HEIGHT (FT)</b>	10	12	15	18	20	22
<b>MULTIPLIER</b>	2.25	1.56	1.00	0.69	0.56	0.46

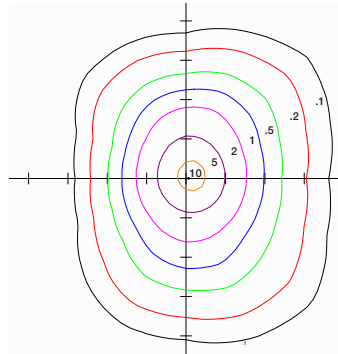
150W Fixture, Type II Distribution, Mounted at 25' mounting height



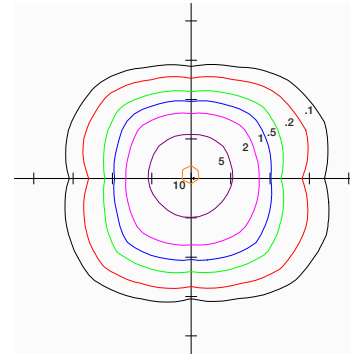
150W Fixture, Type III Distribution, Mounted at 20' mounting height



150W Fixture, Type IV Distribution, Mounted at 20' mounting height

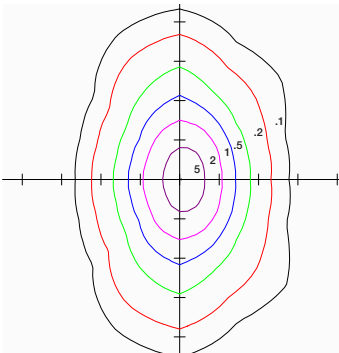


150W Fixture, Type V Distribution, Mounted at 20' mounting height

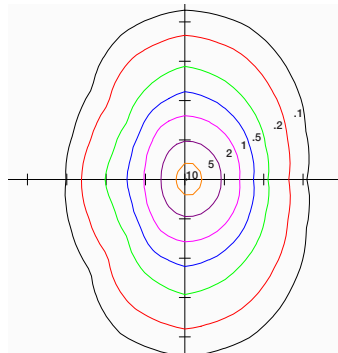


<b>MOUNTING HEIGHT (FT)</b>	12	15	18	20	22	25
<b>MULTIPLIER</b>	2.78	1.78	1.23	1	0.83	0.64

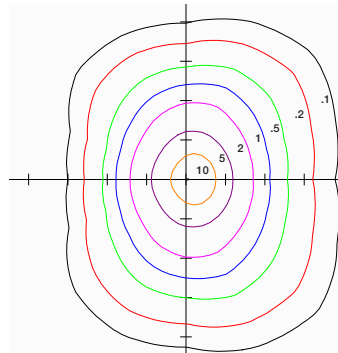
300W Fixture, Type II Distribution, Mounted at 35' mounting height



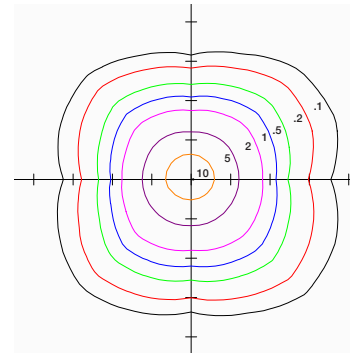
300W Fixture, Type III Distribution, Mounted at 30' mounting height



300W Fixture, Type IV Distribution, Mounted at 25' mounting height



300W Fixture, Type V Distribution, Mounted at 25' mounting height



<b>MOUNTING HEIGHT (FT)</b>	15	20	22	25	30	35
<b>MULTIPLIER</b>	2.78	1.56	1.29	1	0.69	0.51





LEDVANCE LLC  
181 Ballardvale Street, Suite 203  
Wilmington, MA 01887 USA  
Phone: 1-800-LIGHTBULB (1-800-544-4828)  
www.ledvanceUS.com

LEDVANCE is a registered trademark.  
The Bluetooth® word mark and logos are registered trademarks owned by the Bluetooth SIG, Inc. and any use of such marks by LEDVANCE LLC is under license. All other trademarks are those of their respective owners. Specifications subject to change without notice.



SCAN TO FOLLOW US  
ON SOCIAL MEDIA