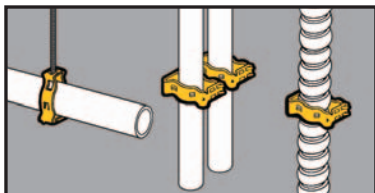


Conduit & Cable

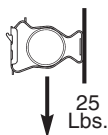
- Supports 3/8" to 2" conduit.
- Unique **Guide-Rite®** Fastener provides for fast and easy installation with pliers.
- **New** redesigned BG-6 accommodates a wide variety of MC/AC cables.
- Now available in Dura Copper finish - add DCU to part number.
- Static Load Capacity:
100 Lbs. - Vertical
25 Lbs. - Horizontal



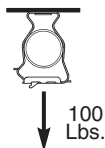
Guide-Rite® Conduit Fasteners



Clearance Hole
For 1/4" Bolt



Static
Load
Capacity



UPC/Part Number	Catalog Number	Conduit Size EMT/Rigid	Box Qty.
781011 18350	BG-6*	3/8"	100
781011 18355	BG-8-12	1/2", 3/4"	100
781011 18360	BG-16	1"	100
781011 18365	BG-20	1 1/4"	100
781011 18370	BG-24	1 1/2"	100
781011 18375	BG-32	2"	100

Patent #4958792



1/4"-20
Thread Impression



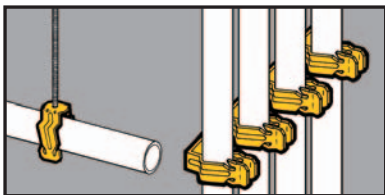
UPC/Part Number	Catalog Number	Conduit Size EMT/Rigid	Box Qty.
781011 18380	BG-6-4T*	3/8"	100
781011 18385	BG-8-12-4T	1/2", 3/4"	100
781011 18390	BG-16-4T	1"	100
781011 18395	BG-20-4T	1 1/4"	100
781011 18400	BG-24-4T	1 1/2"	100
781011 18405	BG-32-4T	2"	100

Patent #4958792

- * BG-6 and BG-6-4T will accept the following range $\varnothing.420 - \varnothing.675$:
1 1/2 thru 10/4 MC/AC cable and 5/16 or 3/8 flexible conduit

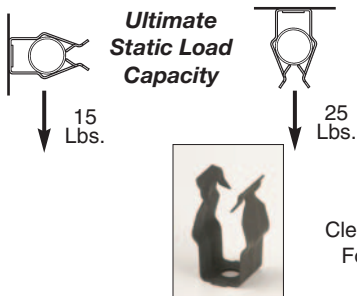
Read safety/installation instruction sheets in packages before use.

Conduit & Cable



- Conduit easily snaps into push type fastener for secure support.
- Available with clearance hole for 1/4" bolt or 1/4"-20 thread impression.
- **Ultimate Static Load Capacity:**
25 Lbs. Vertical
15 Lbs. Horizontal

Push-Type Conduit Fasteners



Conduit & Cable

UPC/Part Number	Catalog Number	Conduit Size	Box Qty.
781011 19200	BP-8	1/2" EMT	100
781011 19205	BP-12	3/4" EMT 1/2" IMC, Rigid	100
781011 19210	BP-16	1" EMT 3/4" IMC, Rigid	100



1/4"-20
Thread Impression

UPC/Part Number	Catalog Number	Conduit Size	Box Qty.
781011 19215	BP-8-4T	1/2" EMT	100
781011 19220	BP-12-4T	3/4" EMT 1/2" IMC, Rigid	100
781011 19225	BP-16-4T	1" EMT 3/4" IMC, Rigid	100

Read safety/installation instruction sheets in packages before use.

