

# Steel Octagon Boxes & Ceiling Pans

## 3 1/4" ROUND CEILING PANS† – 4.0 CUBIC INCH CAPACITY

1/2" DEEP  
CLAMPS IN BOTTOM  
FIXTURE RATED  
UL LISTED



TP266

| Cat. # | Knockouts |          | Unit Qty. | Wt. Lbs. Per 100 |
|--------|-----------|----------|-----------|------------------|
|        | Cable     | Conduit  |           |                  |
| TP266  | 4 - Cable | 1 - 1/2" | 50        | 30               |

†Weight limit for 3 1/4" and 4" Octagon Outlet Boxes and Ceiling Pans is 50 lbs. for fixture/luminaire. Not suitable for fans.

## 3 1/4" OCTAGON OUTLET BOXES† – 9.0 CUBIC INCH CAPACITY

1 1/2" DEEP  
FIXTURE RATED  
UL LISTED



TP256

TP258

TP259

TP260

TP264

| Cat. #                                    | Description           | Knockouts           |          | Unit Qty. | Wt. Lbs. Per 100 |
|---|-----------------------|---------------------|----------|-----------|------------------|
|   |                       | Sides               | Bottom   |           |                  |
| <b>For Conduit – No Clamps</b>            |                       |                     |          |           |                  |
| TP256                                     | -                     | 4 - 1/2"            | 1 - 1/2" | 50        | 41               |
| TP258                                     | Extension Ring        | 4 - 1/2"            | -        | 50        | 31               |
| <b>For Non-metallic Cable with Clamps</b> |                       |                     |          |           |                  |
| TP259                                     | "S" Bracket, Set 1/2" | 4 - Cable, 1 - 1/2" | 1 - 1/2" | 50        | 53               |
| TP260                                     | -                     | 4 - Cable, 2 - 1/2" | 1 - 1/2" | 50        | 44               |
| TP264                                     | Two Screw Ears        | 4 - Cable, 2 - 1/2" | 1 - 1/2" | 50        | 47               |

†Weight limit for 3 1/4" and 4" Octagon Outlet Boxes and Ceiling Pans is 50 lbs. for fixture/luminaire. Not suitable for fans.

## 3 1/4" ROUND CEILING COVERS

UL LISTED



TP270



TP272

| Cat. # | Knockouts               |         | Unit Qty. | Wt. Lbs. Per 100 |
|--------|-------------------------|---------|-----------|------------------|
|        | Cable                   | Conduit |           |                  |
| TP270  | Flat Blank              |         | 100       | 18               |
| TP272  | Flat, 1/2" KO in Center |         | 100       | 18               |

Steel Boxes

# Steel Octagon Boxes & Ceiling Pans

## 4" ROUND CEILING PANS\* – 6.0 CUBIC INCH CAPACITY

1/2" DEEP  
FIXTURE RATED  
UL LISTED



TP269



TP267

| Cat. # | Description    | Knockouts |                     | Unit Qty. | Wt. Lbs. Per 100 |
|--------|----------------|-----------|---------------------|-----------|------------------|
|        |                | Sides     | Bottom              |           |                  |
| TP269  | KOs Only       | -         | 5 - 1/2"            | 50        | 35               |
| TP267  | KOs and Clamps | -         | 4 - Cable, 3 - 1/2" | 50        | 39               |

\*Weight limit for 3/4" and 4" Octagon Outlet Boxes and Ceiling Pans is 50 lbs. for fixture. Not suitable for fans.

## 4" OCTAGON OUTLET BOXES† – 15.5 CUBIC INCH CAPACITY

1 1/2" DEEP  
FOR CONDUIT – NO CLAMPS  
FIXTURE RATED  
UL LISTED



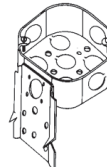
TP274, TP278,  
TP834\*



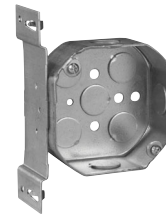
TP276



TP273



TP280



TP282



TP284, TP286

| Cat. #  | Description           | Knockouts          |                    | Unit Qty. | Wt. Lbs. Per 100 |
|---|-----------------------|--------------------|--------------------|-----------|------------------|
|   |                       | Sides              | Bottom             |           |                  |
| TP274   | -                     | 4 - 1/2"           | 5 - 1/2"           | 50        | 50               |
| TP273   | Blank Bottom          | 4 - 1/2"           | -                  | 50        | 51               |
| TP276   | -                     | 4 - 3/4"           | 3 - 1/2", 2 - 3/4" | 50        | 50               |
| TP278   | -                     | 2 - 1/2", 2 - 3/4" | 3 - 1/2", 2 - 3/4" | 50        | 50               |
| TP280   | "C" Bracket           | 4 - 1/2"           | 5 - 1/2"           | 50        | 60               |
| TP282   | "S" Bracket, Set 1/2" | 3 - 1/2"           | 5 - 1/2"           | 50        | 58               |
| <b>Air Plenum</b>   |                       |                    |                    |           |                  |
| TP834*  | For Air Plenum        | 4 - 1/2"           | 5 - 1/2"           | 50        | 52               |
| <b>Octagon Extension Rings – (Slot &amp; Key Permit Mounting without Removing Box Screws)</b> |                       |                    |                    |           |                  |
| TP284‡  | -                     | 4 - 1/2"           | -                  | 50        | 36               |
| TP286‡  | -                     | 2 - 1/2", 2 - 3/4" | -                  | 50        | 36               |

\*For Air Plenum (no mounting holes) - not UL Listed.

†Weight limit for 3/4" and 4" Octagon Outlet Boxes and Ceiling Pans is 50 lbs. for fixture/luminaire. Not suitable for fans.

‡CSA certified.

Steel Boxes

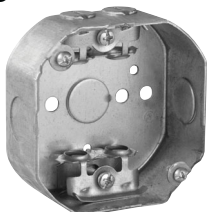
# Steel Octagon Boxes & Ceiling Pans

## 4" OCTAGON OUTLET BOXES† – 15.5 CUBIC INCH CAPACITY

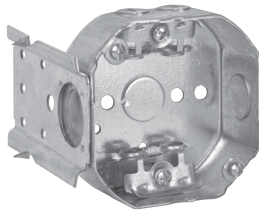
1½" DEEP

FOR ARMoured & METAL-CLAD (MCI) CABLE – CLAMPS IN EACH END  
FIXTURE RATED

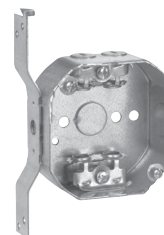
UL LISTED



TP310



TP312



TP314

| Cat. # | Description         | Knockouts         |        | Unit Qty. | Wt. Lbs. Per 100 |
|--------|---------------------|-------------------|--------|-----------|------------------|
|        |                     | Sides             | Bottom |           |                  |
| TP310* | -                   | 4 - Cable, 2 - ½" | 1 - ½" | 50        | 57               |
| TP312* | "C" Bracket         | 4 - Cable, 2 - ½" | 1 - ½" | 50        | 66               |
| TP314* | "S" Bracket, Set ½" | 4 - Cable, 1 - ½" | 1 - ½" | 50        | 64               |

\*UL approved for use with aluminum interlocking grounding metal-clad cable, Type MCIA (Southwire MCAP™).

MCAP™ is a registered trademark of Southwire Company.

†Weight limit for 3¼" and 4" Octagon Outlet Boxes and Ceiling Pans is 50 lbs. for fixture/luminaire. Not suitable for fans.

## 4" OCTAGON OUTLET BOXES† – 15.5 CUBIC INCH CAPACITY

1½" DEEP

FOR NON-METALLIC CABLE – WITH CLAMPS  
FIXTURE RATED

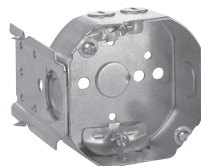
UL LISTED



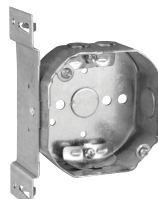
TP298



TP300



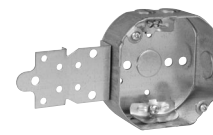
TP302



TP304



TP306



TP308

| Cat. # | Description          | Knockouts         |        | Unit Qty. | Wt. Lbs. Per 100 |
|--------|----------------------|-------------------|--------|-----------|------------------|
|        |                      | Sides             | Bottom |           |                  |
| TP298  | -                    | 4 - Cable, 2 - ½" | 1 - ½" | 50        | 56               |
| TP300  | With Side Nail Holes | 4 - Cable, 2 - ½" | 1 - ½" | 50        | 55               |
| TP302  | "C" Bracket          | 4 - Cable, 2 - ½" | 1 - ½" | 50        | 65               |
| TP304  | "S" Bracket, Set ½"  | 4 - Cable, 1 - ½" | 1 - ½" | 50        | 64               |
| TP306  | Two Screw Ears       | 4 - Cable, 2 - ½" | 1 - ½" | 50        | 58               |
| TP308  | "F" Bracket, Set ½"  | 4 - Cable, 1 - ½" | 1 - ½" | 50        | 64               |

†Weight limit for 3¼" and 4" Octagon Outlet Boxes and Ceiling Pans is 50 lbs. for fixture/luminaire. Not suitable for fans.

Steel Boxes

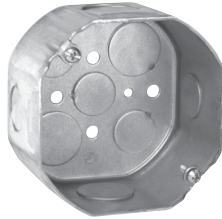
# Steel Octagon Boxes & Ceiling Pans

## 4" OCTAGON OUTLET BOXES† – 21.5 CUBIC INCH CAPACITY

2 1/8" DEEP  
FOR CONDUIT – NO CLAMPS  
FIXTURE RATED  
UL LISTED



TP288, TP290, TP294



TP292, TP838\*



TP292RED



TP339

| Cat. #            | Description    | Knockouts          |                    | Unit Qty. | Wt. Lbs. Per 100 |
|-------------------|----------------|--------------------|--------------------|-----------|------------------|
|                   |                | Sides              | Bottom             |           |                  |
| TP288             | -              | 4 - 1/2"           | 3 - 1/2", 2 - 3/4" | 25        | 64               |
| TP288PF‡          | -              | 4 - 1/2"           | 3 - 1/2", 2 - 3/4" | 25        | 64               |
| TP290             | -              | 4 - 3/4"           | 3 - 1/2", 2 - 3/4" | 25        | 64               |
| TP290PF‡          | -              | 4 - 3/4"           | 3 - 1/2", 2 - 3/4" | 25        | 64               |
| TP292             | -              | 2 - 1/2", 2 - 3/4" | 3 - 1/2", 2 - 3/4" | 25        | 64               |
| TP292PF‡          | -              | 2 - 1/2", 2 - 3/4" | 3 - 1/2", 2 - 3/4" | 25        | 64               |
| TP292RED          | -              | 2 - 1/2", 2 - 3/4" | 3 - 1/2", 2 - 3/4" | 25        | 64               |
| TP294             | -              | 4 - 1"             | 3 - 1/2", 2 - 3/4" | 25        | 64               |
| TP339             | Blank Bottom   | 4 - 1/2"           | -                  | 25        | 65               |
| <b>Air Plenum</b> |                |                    |                    |           |                  |
| TP838*            | For Air Plenum | 2 - 1/2", 2 - 3/4" | 3 - 1/2", 2 - 3/4" | 25        | 62               |

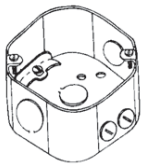
\*For Air Plenum (no mounting holes) - not UL Listed.

†Weight limit for 3/4" and 4" Octagon Outlet Boxes and Ceiling Pans is 50 lbs. for fixture/luminaire. Not suitable for fans.

‡TP catalog numbers ending in PF include ground screw with pigtail lead.

## 4" OCTAGON OUTLET BOXES† – 21.5 CUBIC INCH CAPACITY

2 1/8" DEEP – WITH CABLE CLAMPS  
FIXTURE RATED  
UL LISTED



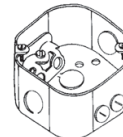
TP316



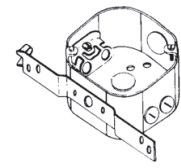
TP318



TP320



TP317



TP338

| Cat. #  | Description           | Knockouts           |          | Unit Qty. | Wt. Lbs. Per 100 |
|---|-----------------------|---------------------|----------|-----------|------------------|
|   |                       | Sides               | Bottom   |           |                  |
| <b>For Non-metallic Cable</b>   |                       |                     |          |           |                  |
| TP316   | -                     | 4 - Cable, 2 - 1/2" | 1 - 1/2" | 25        | 68               |
| TP318   | "C" Bracket           | 4 - Cable, 2 - 1/2" | 1 - 1/2" | 25        | 88               |
| TP320   | "S" Bracket, Set 1/2" | 4 - Cable, 1 - 1/2" | 1 - 1/2" | 25        | 81               |
| <b>For Armoured &amp; Metal-clad (MCI) Cable – Clamps in Each End</b> |                       |                     |          |           |                  |
| TP317*  | -                     | 4 - Cable, 2 - 1/2" | 1 - 1/2" | 25        | 69               |
| TP338*  | "S" Bracket, Set 1/2" | 4 - Cable, 1 - 1/2" | 1 - 1/2" | 25        | 82               |
| TP338PF‡  | "S" Bracket, Set 1/2" | 4 - Cable, 1 - 1/2" | 1 - 1/2" | 25        | 82               |

\*UL approved for use with aluminum interlocking grounding metal-clad cable, Type MCIA (Southwire MCAP™).

MCAP™ is a registered trademark of Southwire Company.

†Weight limit for 3/4" and 4" Octagon Outlet Boxes and Ceiling Pans is 50 lbs. for fixture/luminaire. Not suitable for fans.

‡TP catalog numbers ending in PF include ground screw with pigtail lead.

Steel Boxes

# Steel Octagon Covers & Accessories

## 4" OCTAGON BOX & ADJUSTABLE BAR SETS – 15.5 CUBIC INCH CAPACITY

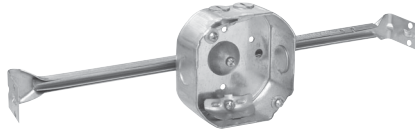
1½" DEEP BOX SETS  
FIXTURE RATED

UL LISTED

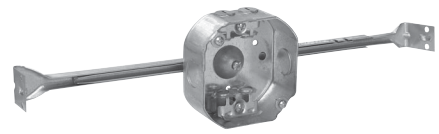
Weight limits: 50 lbs. at 16".



TP372



TP377



TP367

| Cat. #  | Stud Spacing | Stud | Unit Qty. | Wt. Lbs. Per 100 |
|---|--------------|------|-----------|------------------|
| <b>For Conduit – No Clamps</b>  |              |      |           |                  |
| TP372*  | 16"          | Yes  | 25        | 85               |
| <b>For Non-metallic Cable – with Clamps</b>                           |              |      |           |                  |
| TP377   | 16"          | -    | 25        | 102              |
| <b>For Armoured &amp; Metal-clad (MCI) Cable – Clamps in Each End</b> |              |      |           |                  |
| TP367   | 16"          | -    | 25        | 100              |
| TP367PF†  | 16"          | -    | 25        | 100              |

\*4" Octagon Box and Adjustable Bar Sets have ½" KOs for conduit.  
†TP catalog numbers ending in PF include ground screw with pigtail lead.

## ADJUSTABLE BAR HANGERS

UL LISTED

### Features:

- Holding prong holds box in place for nailing
- Design resists bending and twisting
- Locking tabs to hold bar in position

Steel Boxes



TP356



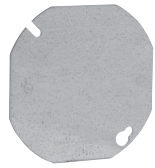
TP352

| Cat. # | Stud Spacing | Fan Rated | 16" Fan Weight (Lbs.) | 24" Fan Weight (Lbs.) | Fixture Rated | 16" Fixture Weight (Lbs.) | 24" Fixture Weight (Lbs.) | Unit Qty. | Wt. Lbs. Per 100 |
|--------|--------------|-----------|-----------------------|-----------------------|---------------|---------------------------|---------------------------|-----------|------------------|
| TP356  | 16"          | No        | -                     | -                     | Yes           | 50                        | -                         | 50        | 41.0             |
| TP352  | 16" - 24"    | Yes       | 70                    | -                     | Yes           | 90                        | 50                        | 50        | 34.1             |

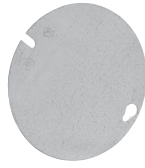
# Steel Octagon Covers & Accessories

## 4" OCTAGON BOX COVERS – CUBIC CAPACITY (SEE BELOW)

### UL LISTED



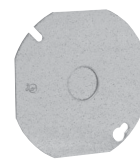
TP322, TP853\*



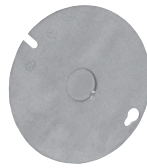
TP323



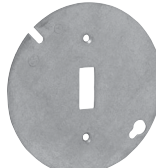
TP326, TP331,  
TP332, TP333



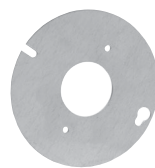
TP328



TP329



TP335



TP334



TP336

| Cat. #            | Description   | Capacity<br>Cu. In. | Unit<br>Qty. | Wt. Lbs.<br>Per 100 |
|-------------------|---|---------------------|--------------|---------------------|
| TP322†            | Flat Blank, Octagon Shape                                   | -                   | 50           | 22                  |
| TP322RED†         | Flat Blank, Octagon Shape                                   | -                   | 50           | 22                  |
| TP323†            | Flat Blank, Round Shape                                     | -                   | 50           | 24                  |
| TP333             | Raised 1", Open with Ears 2 <sup>3</sup> / <sub>4</sub> "   | 7.0                 | 25           | 30                  |
| TP332             | Raised 1/2", Open with Ears 2 <sup>3</sup> / <sub>4</sub> " | 3.3                 | 50           | 22                  |
| TP326             | Raised 3/8", Open with Ears 2 <sup>3</sup> / <sub>4</sub> " | 3.8                 | 50           | 20                  |
| TP331             | Raised 3/4", Open with Ears 2 <sup>3</sup> / <sub>4</sub> " | 5.0                 | 50           | 26                  |
| TP328†            | Flat with 1/2" KO, Octagon Shape                            | -                   | 50           | 22                  |
| TP329†            | Flat with 1/2" KO, Round Shape                              | -                   | 50           | 24                  |
| TP335             | Flat, for Toggle Switch                                     | -                   | 50           | 23                  |
| TP334‡            | Flat, Single Receptacle 1 <sup>13</sup> / <sub>32</sub> "   | -                   | 50           | 21                  |
| TP336             | Flat, for Duplex Receptacle                                 | -                   | 50           | 18                  |
| <b>Air Plenum</b> |   |                     |              |                     |
| TP853*‡           | Flat, Blank with PVC Gasket                                 | -                   | 50           | 24                  |

\*For Air Plenum (no mounting holes).

†CSA certified.

‡Not UL Listed.

## FLEXIBLE FIXTURE HANGERS

TPRFH Flexible Fixture Hangers are used in commercial or light industrial applications where HID high bay and low bay lighting fixtures are used. Specific applications include storage facilities, shipping warehouses, retail and DIY facilities.

### Features:

- Suitable for use with 1/2" or 3/4" fixture conduit stems, these hangers allow the conduit stem of the fixture (luminaire) to swing in any direction; maximum swing angle is 26° from vertical max. slope angles 22 1/2°
- Available for attachment to round or octagonal steel boxes
- Quickly and easily attached by two screws
- Hangers are drilled and tapped for use with 3/4" conduit stem as standard and come supplied with a 3/4" - 1/2" reducer for 1/2" conduit stem applications

### Certifications and Compliances:

- UL1598
- CSA C22.2 No. 250
- Suitable for damp locations



### Standard Materials and Finishes:

- Material – sheet steel
- Finish – zinc chromate for corrosion resistance

| Cat. #  | Description                                  | Support<br>Wt. (Lbs.) |
|---------|--|-----------------------|
| TPRFH12 | For use with 4"<br>Round or<br>Octagon Boxes | 50                    |

Steel Boxes

# Steel Octagon Boxes & Ceiling Pans

## 3 1/4" ROUND CEILING PANS† – 4.0 CUBIC INCH CAPACITY

1/2" DEEP  
CLAMPS IN BOTTOM  
FIXTURE RATED  
UL LISTED



TP266

| Cat. # | Knockouts |          | Unit Qty. | Wt. Lbs. Per 100 |
|--------|-----------|----------|-----------|------------------|
|        | Cable     | Conduit  |           |                  |
| TP266  | 4 - Cable | 1 - 1/2" | 50        | 30               |

†Weight limit for 3 1/4" and 4" Octagon Outlet Boxes and Ceiling Pans is 50 lbs. for fixture/luminaire. Not suitable for fans.

## 3 1/4" OCTAGON OUTLET BOXES† – 9.0 CUBIC INCH CAPACITY

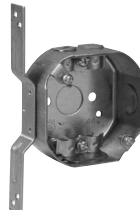
1 1/2" DEEP  
FIXTURE RATED  
UL LISTED



TP256



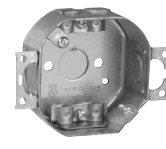
TP258



TP259



TP260



TP264

| Cat. #                                    | Description           | Knockouts           |          | Unit Qty. | Wt. Lbs. Per 100 |
|---|-----------------------|---------------------|----------|-----------|------------------|
|   |                       | Sides               | Bottom   |           |                  |
| <b>For Conduit – No Clamps</b>            |                       |                     |          |           |                  |
| TP256                                     | -                     | 4 - 1/2"            | 1 - 1/2" | 50        | 41               |
| TP258                                     | Extension Ring        | 4 - 1/2"            | -        | 50        | 31               |
| <b>For Non-metallic Cable with Clamps</b> |                       |                     |          |           |                  |
| TP259                                     | "S" Bracket, Set 1/2" | 4 - Cable, 1 - 1/2" | 1 - 1/2" | 50        | 53               |
| TP260                                     | -                     | 4 - Cable, 2 - 1/2" | 1 - 1/2" | 50        | 44               |
| TP264                                     | Two Screw Ears        | 4 - Cable, 2 - 1/2" | 1 - 1/2" | 50        | 47               |

†Weight limit for 3 1/4" and 4" Octagon Outlet Boxes and Ceiling Pans is 50 lbs. for fixture/luminaire. Not suitable for fans.

## 3 1/4" ROUND CEILING COVERS

UL LISTED



TP270



TP272

| Cat. # | Knockouts               |         | Unit Qty. | Wt. Lbs. Per 100 |
|--------|-------------------------|---------|-----------|------------------|
|        | Cable                   | Conduit |           |                  |
| TP270  | Flat Blank              |         | 100       | 18               |
| TP272  | Flat, 1/2" KO in Center |         | 100       | 18               |



# Steel Octagon Boxes & Ceiling Pans

## 4" ROUND CEILING PANS\* – 6.0 CUBIC INCH CAPACITY

1/2" DEEP  
FIXTURE RATED  
UL LISTED



TP269



TP267

| Cat. # | Description    | Knockouts |                     | Unit Qty. | Wt. Lbs. Per 100 |
|--------|----------------|-----------|---------------------|-----------|------------------|
|        |                | Sides     | Bottom              |           |                  |
| TP269  | KOs Only       | -         | 5 - 1/2"            | 50        | 35               |
| TP267  | KOs and Clamps | -         | 4 - Cable, 3 - 1/2" | 50        | 39               |

\*Weight limit for 3/4" and 4" Octagon Outlet Boxes and Ceiling Pans is 50 lbs. for fixture. Not suitable for fans.

## 4" OCTAGON OUTLET BOXES† – 15.5 CUBIC INCH CAPACITY

1 1/2" DEEP  
FOR CONDUIT – NO CLAMPS  
FIXTURE RATED  
UL LISTED



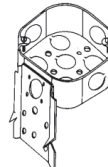
TP274, TP278,  
TP834\*



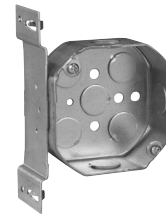
TP276



TP273



TP280



TP282



TP284, TP286

| Cat. #  | Description           | Knockouts          |                    | Unit Qty. | Wt. Lbs. Per 100 |
|---|-----------------------|--------------------|--------------------|-----------|------------------|
|   |                       | Sides              | Bottom             |           |                  |
| TP274   | -                     | 4 - 1/2"           | 5 - 1/2"           | 50        | 50               |
| TP273   | Blank Bottom          | 4 - 1/2"           | -                  | 50        | 51               |
| TP276   | -                     | 4 - 3/4"           | 3 - 1/2", 2 - 3/4" | 50        | 50               |
| TP278   | -                     | 2 - 1/2", 2 - 3/4" | 3 - 1/2", 2 - 3/4" | 50        | 50               |
| TP280   | "C" Bracket           | 4 - 1/2"           | 5 - 1/2"           | 50        | 60               |
| TP282   | "S" Bracket, Set 1/2" | 3 - 1/2"           | 5 - 1/2"           | 50        | 58               |
| <b>Air Plenum</b>   |                       |                    |                    |           |                  |
| TP834*  | For Air Plenum        | 4 - 1/2"           | 5 - 1/2"           | 50        | 52               |
| <b>Octagon Extension Rings – (Slot &amp; Key Permit Mounting without Removing Box Screws)</b> |                       |                    |                    |           |                  |
| TP284‡  | -                     | 4 - 1/2"           | -                  | 50        | 36               |
| TP286‡  | -                     | 2 - 1/2", 2 - 3/4" | -                  | 50        | 36               |

\*For Air Plenum (no mounting holes) - not UL Listed.

†Weight limit for 3/4" and 4" Octagon Outlet Boxes and Ceiling Pans is 50 lbs. for fixture/luminaire. Not suitable for fans.

‡CSA certified.

Steel Boxes



# Steel Octagon Boxes & Ceiling Pans

## 4" OCTAGON OUTLET BOXES† – 15.5 CUBIC INCH CAPACITY

1½" DEEP

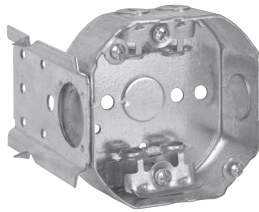
FOR ARMoured & METAL-CLAD (MCI) CABLE – CLAMPS IN EACH END

FIXTURE RATED

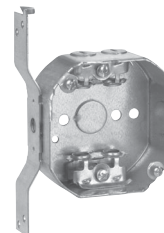
UL LISTED



TP310



TP312



TP314

| Cat. # | Description         | Knockouts         |        | Unit Qty. | Wt. Lbs. Per 100 |
|--------|---------------------|-------------------|--------|-----------|------------------|
|        |                     | Sides             | Bottom |           |                  |
| TP310* | -                   | 4 - Cable, 2 - ½" | 1 - ½" | 50        | 57               |
| TP312* | "C" Bracket         | 4 - Cable, 2 - ½" | 1 - ½" | 50        | 66               |
| TP314* | "S" Bracket, Set ½" | 4 - Cable, 1 - ½" | 1 - ½" | 50        | 64               |

\*UL approved for use with aluminum interlocking grounding metal-clad cable, Type MCIA (Southwire MCAP™).

MCAP™ is a registered trademark of Southwire Company.

†Weight limit for 3¼" and 4" Octagon Outlet Boxes and Ceiling Pans is 50 lbs. for fixture/luminaire. Not suitable for fans.

## 4" OCTAGON OUTLET BOXES† – 15.5 CUBIC INCH CAPACITY

1½" DEEP

FOR NON-METALLIC CABLE – WITH CLAMPS

FIXTURE RATED

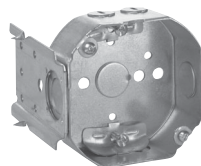
UL LISTED



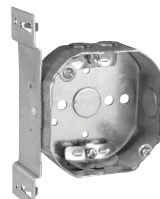
TP298



TP300



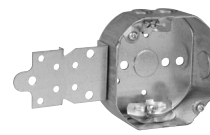
TP302



TP304



TP306



TP308

| Cat. # | Description          | Knockouts         |        | Unit Qty. | Wt. Lbs. Per 100 |
|--------|----------------------|-------------------|--------|-----------|------------------|
|        |                      | Sides             | Bottom |           |                  |
| TP298  | -                    | 4 - Cable, 2 - ½" | 1 - ½" | 50        | 56               |
| TP300  | With Side Nail Holes | 4 - Cable, 2 - ½" | 1 - ½" | 50        | 55               |
| TP302  | "C" Bracket          | 4 - Cable, 2 - ½" | 1 - ½" | 50        | 65               |
| TP304  | "S" Bracket, Set ½"  | 4 - Cable, 1 - ½" | 1 - ½" | 50        | 64               |
| TP306  | Two Screw Ears       | 4 - Cable, 2 - ½" | 1 - ½" | 50        | 58               |
| TP308  | "F" Bracket, Set ½"  | 4 - Cable, 1 - ½" | 1 - ½" | 50        | 64               |

†Weight limit for 3¼" and 4" Octagon Outlet Boxes and Ceiling Pans is 50 lbs. for fixture/luminaire. Not suitable for fans.

Steel Boxes

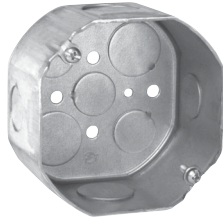
# Steel Octagon Boxes & Ceiling Pans

## 4" OCTAGON OUTLET BOXES† – 21.5 CUBIC INCH CAPACITY

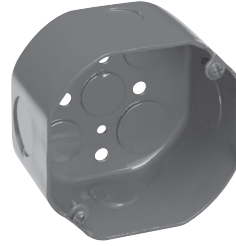
2 1/8" DEEP  
FOR CONDUIT – NO CLAMPS  
FIXTURE RATED  
UL LISTED



TP288, TP290, TP294



TP292, TP838\*



TP292RED



TP339

| Cat. #            | Description    | Knockouts          |                    | Unit Qty. | Wt. Lbs. Per 100 |
|-------------------|----------------|--------------------|--------------------|-----------|------------------|
|                   |                | Sides              | Bottom             |           |                  |
| TP288             | -              | 4 - 1/2"           | 3 - 1/2", 2 - 3/4" | 25        | 64               |
| TP288PF‡          | -              | 4 - 1/2"           | 3 - 1/2", 2 - 3/4" | 25        | 64               |
| TP290             | -              | 4 - 3/4"           | 3 - 1/2", 2 - 3/4" | 25        | 64               |
| TP290PF‡          | -              | 4 - 3/4"           | 3 - 1/2", 2 - 3/4" | 25        | 64               |
| TP292             | -              | 2 - 1/2", 2 - 3/4" | 3 - 1/2", 2 - 3/4" | 25        | 64               |
| TP292PF‡          | -              | 2 - 1/2", 2 - 3/4" | 3 - 1/2", 2 - 3/4" | 25        | 64               |
| TP292RED          | -              | 2 - 1/2", 2 - 3/4" | 3 - 1/2", 2 - 3/4" | 25        | 64               |
| TP294             | -              | 4 - 1"             | 3 - 1/2", 2 - 3/4" | 25        | 64               |
| TP339             | Blank Bottom   | 4 - 1/2"           | -                  | 25        | 65               |
| <b>Air Plenum</b> |                |                    |                    |           |                  |
| TP838*            | For Air Plenum | 2 - 1/2", 2 - 3/4" | 3 - 1/2", 2 - 3/4" | 25        | 62               |

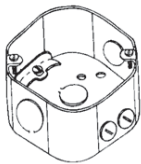
\*For Air Plenum (no mounting holes) - not UL Listed.

†Weight limit for 3/4" and 4" Octagon Outlet Boxes and Ceiling Pans is 50 lbs. for fixture/luminaire. Not suitable for fans.

‡TP catalog numbers ending in PF include ground screw with pigtail lead.

## 4" OCTAGON OUTLET BOXES† – 21.5 CUBIC INCH CAPACITY

2 1/8" DEEP – WITH CABLE CLAMPS  
FIXTURE RATED  
UL LISTED



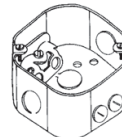
TP316



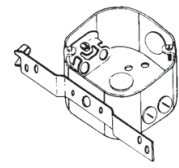
TP318



TP320



TP317



TP338

| Cat. #  | Description           | Knockouts           |          | Unit Qty. | Wt. Lbs. Per 100 |
|---|-----------------------|---------------------|----------|-----------|------------------|
|   |                       | Sides               | Bottom   |           |                  |
| <b>For Non-metallic Cable</b>   |                       |                     |          |           |                  |
| TP316   | -                     | 4 - Cable, 2 - 1/2" | 1 - 1/2" | 25        | 68               |
| TP318   | "C" Bracket           | 4 - Cable, 2 - 1/2" | 1 - 1/2" | 25        | 88               |
| TP320   | "S" Bracket, Set 1/2" | 4 - Cable, 1 - 1/2" | 1 - 1/2" | 25        | 81               |
| <b>For Armoured &amp; Metal-clad (MCI) Cable – Clamps in Each End</b> |                       |                     |          |           |                  |
| TP317*  | -                     | 4 - Cable, 2 - 1/2" | 1 - 1/2" | 25        | 69               |
| TP338*  | "S" Bracket, Set 1/2" | 4 - Cable, 1 - 1/2" | 1 - 1/2" | 25        | 82               |
| TP338PF‡  | "S" Bracket, Set 1/2" | 4 - Cable, 1 - 1/2" | 1 - 1/2" | 25        | 82               |

\*UL approved for use with aluminum interlocking grounding metal-clad cable, Type MCIA (Southwire MCAP™).

MCAP™ is a registered trademark of Southwire Company.

†Weight limit for 3/4" and 4" Octagon Outlet Boxes and Ceiling Pans is 50 lbs. for fixture/luminaire. Not suitable for fans.

‡TP catalog numbers ending in PF include ground screw with pigtail lead.

Steel Boxes

# Steel Octagon Covers & Accessories

## 4" OCTAGON BOX & ADJUSTABLE BAR SETS – 15.5 CUBIC INCH CAPACITY

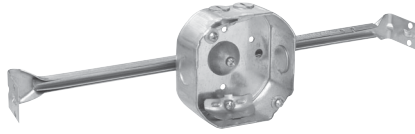
1½" DEEP BOX SETS  
FIXTURE RATED

UL LISTED

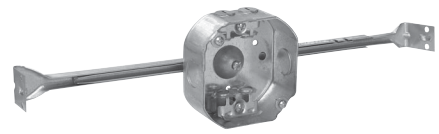
Weight limits: 50 lbs. at 16".



TP372



TP377



TP367

| Cat. #  | Stud Spacing | Stud | Unit Qty. | Wt. Lbs. Per 100 |
|---|--------------|------|-----------|------------------|
| <b>For Conduit – No Clamps</b>  |              |      |           |                  |
| TP372*  | 16"          | Yes  | 25        | 85               |
| <b>For Non-metallic Cable – with Clamps</b>                           |              |      |           |                  |
| TP377   | 16"          | -    | 25        | 102              |
| <b>For Armoured &amp; Metal-clad (MCI) Cable – Clamps in Each End</b> |              |      |           |                  |
| TP367   | 16"          | -    | 25        | 100              |
| TP367PF†  | 16"          | -    | 25        | 100              |

\*4" Octagon Box and Adjustable Bar Sets have ½" KOs for conduit.  
†TP catalog numbers ending in PF include ground screw with pigtail lead.

## ADJUSTABLE BAR HANGERS

UL LISTED

### Features:

- Holding prong holds box in place for nailing
- Design resists bending and twisting
- Locking tabs to hold bar in position

Steel Boxes



TP356



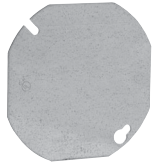
TP352

| Cat. # | Stud Spacing | Fan Rated | 16" Fan Weight (Lbs.) | 24" Fan Weight (Lbs.) | Fixture Rated | 16" Fixture Weight (Lbs.) | 24" Fixture Weight (Lbs.) | Unit Qty. | Wt. Lbs. Per 100 |
|--------|--------------|-----------|-----------------------|-----------------------|---------------|---------------------------|---------------------------|-----------|------------------|
| TP356  | 16"          | No        | -                     | -                     | Yes           | 50                        | -                         | 50        | 41.0             |
| TP352  | 16" - 24"    | Yes       | 70                    | -                     | Yes           | 90                        | 50                        | 50        | 34.1             |

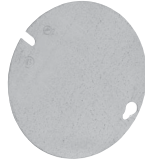
# Steel Octagon Covers & Accessories

## 4" OCTAGON BOX COVERS – CUBIC CAPACITY (SEE BELOW)

### UL LISTED



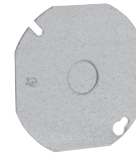
TP322, TP853\*



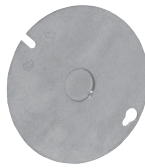
TP323



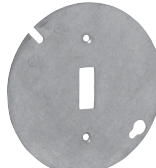
TP326, TP331,  
TP332, TP333



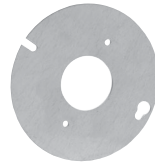
TP328



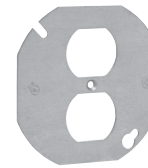
TP329



TP335



TP334



TP336

| Cat. #            | Description   | Capacity<br>Cu. In. | Unit<br>Qty. | Wt. Lbs.<br>Per 100 |
|-------------------|---|---------------------|--------------|---------------------|
| TP322†            | Flat Blank, Octagon Shape                                   | -                   | 50           | 22                  |
| TP322RED†         | Flat Blank, Octagon Shape                                   | -                   | 50           | 22                  |
| TP323†            | Flat Blank, Round Shape                                     | -                   | 50           | 24                  |
| TP333             | Raised 1", Open with Ears 2 <sup>3</sup> / <sub>4</sub> "   | 7.0                 | 25           | 30                  |
| TP332             | Raised 1/2", Open with Ears 2 <sup>3</sup> / <sub>4</sub> " | 3.3                 | 50           | 22                  |
| TP326             | Raised 3/8", Open with Ears 2 <sup>3</sup> / <sub>4</sub> " | 3.8                 | 50           | 20                  |
| TP331             | Raised 3/4", Open with Ears 2 <sup>3</sup> / <sub>4</sub> " | 5.0                 | 50           | 26                  |
| TP328†            | Flat with 1/2" KO, Octagon Shape                            | -                   | 50           | 22                  |
| TP329†            | Flat with 1/2" KO, Round Shape                              | -                   | 50           | 24                  |
| TP335             | Flat, for Toggle Switch                                     | -                   | 50           | 23                  |
| TP334‡            | Flat, Single Receptacle 1 <sup>13</sup> / <sub>32</sub> "   | -                   | 50           | 21                  |
| TP336             | Flat, for Duplex Receptacle                                 | -                   | 50           | 18                  |
| <b>Air Plenum</b> |   |                     |              |                     |
| TP853*‡           | Flat, Blank with PVC Gasket                                 | -                   | 50           | 24                  |

\*For Air Plenum (no mounting holes).

†CSA certified.

‡Not UL Listed.

## FLEXIBLE FIXTURE HANGERS

TPRFH Flexible Fixture Hangers are used in commercial or light industrial applications where HID high bay and low bay lighting fixtures are used. Specific applications include storage facilities, shipping warehouses, retail and DIY facilities.

### Features:

- Suitable for use with 1/2" or 3/4" fixture conduit stems, these hangers allow the conduit stem of the fixture (luminaire) to swing in any direction; maximum swing angle is 26° from vertical max. slope angles 22 1/2°
- Available for attachment to round or octagonal steel boxes
- Quickly and easily attached by two screws
- Hangers are drilled and tapped for use with 3/4" conduit stem as standard and come supplied with a 3/4" - 1/2" reducer for 1/2" conduit stem applications

### Certifications and Compliances:

- UL1598
- CSA C22.2 No. 250
- Suitable for damp locations



### Standard Materials and Finishes:

- Material – sheet steel
- Finish – zinc chromate for corrosion resistance

| Cat. #  | Description                                  | Support<br>Wt. (Lbs.) |
|---------|--|-----------------------|
| TPRFH12 | For use with 4"<br>Round or<br>Octagon Boxes | 50                    |

Steel Boxes