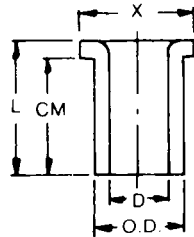


Adapters

Box Adapters for Enclosures



Adapts nonmetallic conduit to all electrical enclosures by inserting adapter through knockout and cementing into Carlon couplings.



Part No.	Size	Std. Ctn. Qty.	Min D	OD Typical	Max X	CM Typical	L
E996D	1/2	100	.662	.840	17/64	23/32	27/32
E996E	3/4	100	.824	1.050	121/64	25/32	29/32
E996F	1	100	1.049	1.315	15/8	61/64	13/32
E996G	1 1/4	50	1.380	1.660	131/32	11/16	11/4
E996H	1 1/2	50	1.610	1.900	213/64	1 3/16	13/8
E996J	2	25	2.067	2.375	229/32	11/4	17/16
E996K	2 1/2	15	2.469	2.875	37/16	17/8	115/16
E996L	3	20	3.068	3.500	41/8	2	2 1/16
E996L	3	20	3.068	3.500	41/8	2	2 1/16
E996N	4	10	4.026	4.500	5 1/8	2 1/2	2 1/4

Threaded Adapters



Part No.	Size	Std. Ctn. Qty.
E9842D ¹	1/2	25
E9842E ²	3/4	25

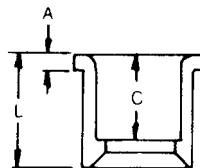
¹ Fits 3/4" sockets ² Fits 1" sockets

Reducers

Reducer Bushings



For connecting different sizes of conduit. Bell x Spigot.



Part No.	Size	Std. Ctn. Qty.	L Typical	A Typical	C Typical
E950ED	3/4" x 1/2"	100	15/32	13/64	11/32
E950FD-CAR	1" x 1/2"	25	111/32	3/16	57/64
E950FE	1" x 3/4"	100	111/32	3/16	11/64
E950GE-CAR	1 1/4" x 3/4"	10	115/32	3/16	11/64
E950GF	1 1/4" x 1"	50	115/32	3/16	19/64
E950HF-CAR	1 1/2" x 1"	10	119/32	3/16	19/64
E950HG-CAR	1 1/2" x 1 1/4"	10	119/32	3/16	117/64
E950JG-CAR	2" x 1 1/4"	10	13/4	7/32	117/64
E950JH-CAR	2" x 1 1/2"	10	13/4	7/32	125/64
E950KJ-CAR	2 1/2" x 2"	10	25/32	3/8	127/64
E950LJ-CAR	3" x 2"	10	2 1/8	1/4	17/8
▶ E950LK	3" x 2 1/2"	25	115/16	1/4	111/16
E950NL	4" x 3"	25	2 3/4	5/16	115/16

Reducers

Fabricated Reducers



Fabricated Reducers

Male x Male

Part No.	Size	Std. Ctn. Qty.	Std. Ctn. Wt. (lbs.)
▶ E952JH	1 1/2" x 2"	48	20
▶ E952KJ	2 1/2" x 2"	48	26
▶ E952LJ	3" x 2"	36	21
▶ E952LK	3" x 2 1/2"	36	32
▶ E952NL	4" x 3"	15	21
▶ E952NM	4" x 3 1/2"	15	25
▶ E952PN	5" x 4"	12	27
▶ E952RP	6" x 5"	10	31

Male x Female

Part No.	Size	Std. Ctn. Qty.	Std. Ctn. Wt. (lbs.)
▶ E952NJF	4" x 2"	15	16
▶ E952RNF	6" x 4"	10	28

Plugs

Reducer Plugs



Part No.	Size	Std. Ctn. Qty.	Std. Ctn. Wt. (lbs.)
▶ E971C	3/4" x 1/2"	100	2
▶ E971D	1" x 3/4"	100	3

Plugs (Polyethylene)



Part No.	Size	Std. Ctn. Qty.	Std. Ctn. Wt. (lbs.)
▶ P258H	1 1/2"	50	2
▶ P258K	2 1/2"	25	1.5

Plugs with Pull Tabs (Polyethylene)



Part No.	Size	Std. Ctn. Qty.	Std. Ctn. Wt. (lbs.)
▶ P258JT	2	60	3
▶ P258LT	3	30	3
▶ P258NT	4	48	8
▶ P258PT	5	30	6
▶ P258RT	6	30	9