

4125/90 Series Single Pole Toggle Switches

Applications

- McGill full-size, single pole toggle switches are available in several electrical ratings to meet a variety of requirements.
- Ruggedly constructed with metallic toggle and threaded bushing to ensure extended service life.
- Marine, food service, generator, industrial control and office automation markets.
- Appropriate for use in low voltage DC applications.



Features

- A variety of circuits are available.
- Available with screw, solder, and 1/4" Quick connect terminals.
- Mounting hardware and terminal screws (where applicable) furnished unassembled.
- Mounting hardware consists of nickel plated hex nut and knurled nut.
- Indicating plate is furnished for maintained ON-OFF circuits.

Standard Materials

- Base: phenolic 302 °F/150 °C
- Bat handle: nickel plated brass
- Bushing: nickel plated brass

Certifications and Compliances

-  UL Recognized Component
- UL File Number: E335442
- UL Standard: 1054, Guide WORY2
- CSA File Number: 249055
- CSA Standard: C22.2 No. 55
-  RoHS Compliant



Circuitry			Screw Term.			Solder Term.		
A	B	C	Poles	Catalog Number	Rating	Poles	Catalog Number	Rating
10 Amp								
ON	—	OFF	SPST	4125-0001N	10 Amp, 125 Vac/Vdc 5 Amp, 250 Vac/Vdc 1/4 HP, 125 Vac/Vdc	SPST	4125-0002N	10 Amp, 125 Vac/Vdc 5 Amp, 250 Vac/Vdc 1/4 HP, 125 Vac/Vdc
15 Amp								
ON	OFF	ON	SPDT	91-0001N	15 Amp, 125 Vac 10 Amp, 250 Vac 3/4 HP, 120-240 Vac	SPDT	91-0002N	15 Amp, 125 Vac 10 Amp, 250 Vac 3/4 HP, 120-240 Vac
ON	—	ON	SPDT	92-0001N		SPDT	92-0002N	
(ON)	OFF	(ON)	SPDT	93-0001N		SPDT	93-0002N	
ON	OFF	(ON)	SPDT	93-1001N		SPDT	93-1002N	
(OFF)	—	ON	SPST	93-2001N		SPST	93-2002N	
(ON)	—	OFF	SPST	93-3001N		SPST	93-3002N	
ON	—	(ON)	SPDT	93-4001N		SPDT	93-4002N	
20 Amp								
ON	—	OFF	SPST	90-0001N	20 Amp, 125 Vac 12 Amp, 250 Vac 1 HP, 120-240 Vac	SPST	90-0002N	20 Amp, 125 Vac 12 Amp, 250 Vac 1 HP, 120-240 Vac

() Momentary. Poles: SP = single pole, DP = double pole, ST = single throw, DT = double throw.

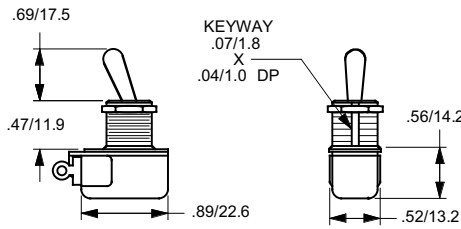
Shaded catalog numbers are normally stocked items. All other items are made to order. Contact your local sales representative for pricing.

4125/90 Series Single Pole Toggle Switches

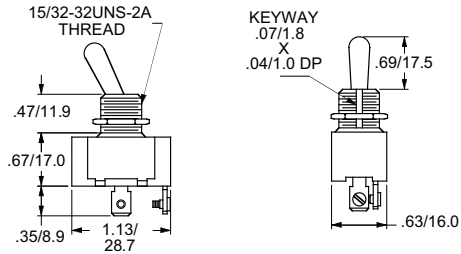
Switches

Circuitry			1/4" Q.C. Term.		6" Wire Leads			
A	B	C	Poles	Catalog Number	Rating	Poles	Catalog Number	Rating
10 Amp								
ON	—	OFF	SPST	4125-0003N	10 Amp, 125 Vac/Vdc 5 Amp, 250 Vac/Vdc 1/4 HP, 125 Vac/Vdc	SPST	4125-0004N	10 Amp, 125 Vac/Vdc 5 Amp, 250 Vac/Vdc 1/4 HP, 125 Vac/Vdc
15 Amp								
ON	OFF	ON	SPDT	91-0003N		—	—	—
ON	—	ON	SPDT	92-0003N		—	—	—
(ON)	OFF	(ON)	SPDT	93-0003N	15 Amp, 125 Vac	—	—	—
ON	OFF	(ON)	SPDT	93-1003N	10 Amp, 250 Vac	—	—	—
(OFF)	—	ON	SPST	93-2003N	3/4 HP, 120-240 Vac	—	—	—
(ON)	—	OFF	SPST	93-3003N		—	—	—
ON	—	(ON)	SPDT	93-4003N		—	—	—
20 Amp								
ON	—	OFF	SPST	90-0003N	20 Amp, 125 Vac 12 Amp, 250 Vac 1 HP, 120-240 Vac	—	—	—

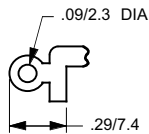
Dimensions in Inches/Millimeters



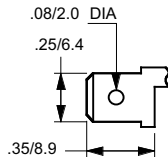
10 Amp Toggle Switch



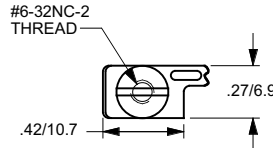
15 & 20 Amp Toggle Switch



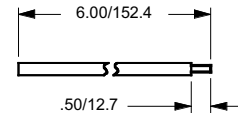
10 Amp Solder Lug Terminal



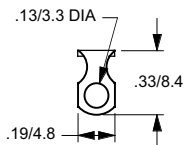
10 Amp 1/4" Q.C. Terminal



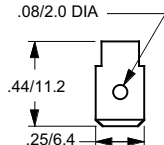
10 Amp Screw Terminal



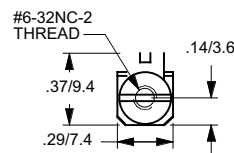
10 Amp Integrated Wire Lead Terminal



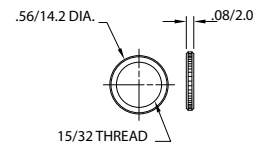
15 & 20 Amp Solder Lug Terminal



15 & 20 Amp 1/4" Q.C. Terminal



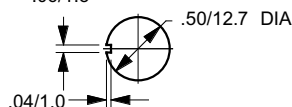
15 & 20 Amp Screw Terminal



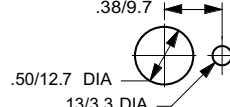
Knurled Nut



Mounting Hole



Mounting Hole With Keyway



Mounting Hole With Locking Ring

() Momentary. Poles: SP = single pole, DP = double pole, ST = single throw, DT = double throw.

Shaded catalog numbers are normally stocked items. All other items are made to order. Contact your local sales representative for pricing.

0121/0140 Series Multi-Pole Toggle Switches

Applications

- McGill full-size, single pole toggle switches are available in several electrical ratings to meet a variety of requirements.
- Ruggedly constructed with metallic toggle and threaded bushing to ensure extended service life.
- Marine, food service, generator, industrial control and office automation markets.
- Appropriate for use in low voltage Vdc applications.

Features

- A variety of circuits are available.
- Available with screw, solder, and 1/4" Quick connect terminals.
- Mounting hardware and terminal screws (where applicable) furnished unassembled.
- Mounting hardware consists of nickel plated hex nut and knurled nut.
- Indicating plate is furnished for maintained ON-OFF circuits.

Standard Materials

- Base: phenolic 302 °F/150 °C
- Bat handle: nickel plated brass
- Bushing: nickel plated brass



0121-0009N



0121-0010N

Certifications and Compliances

- UL Recognized Component
- UL File Number: E335442
- UL Standard: 1054, Guide WORY2
- CSA File Number: 249055
- CSA Standard: C22.2 No. 55
- RoHS Compliant

Circuitry			Screw Terminal		Solder Terminal		1/4" Q.C. Terminal		Rating
A	B	C	Poles	Catalog Number	Poles	Catalog Number	Poles	Catalog Number	
15 Amp, 2 Poles									
ON	—	OFF	DPST	0121-0001N	DPST	0121-0017N	DPST	0121-0009N	15 Amp, 125 Vac 10 Amp, 250 Vac 3/4 HP, 250 Vac
ON	—	ON	DPDT	0121-0003N	DPDT	0121-0019N	DPDT	0121-0011N	
(ON)	—	OFF	DPST	0121-0005N	DPST	0121-0021N	DPST	0121-0013N	
ON	—	(ON)	DPDT	0121-0006N	DPDT	0121-0022N	DPDT	0121-0014N	
(OFF)	—	ON	DPST	0121-0043N	DPST	0121-0045N	DPST	0121-0044N	15 Amp, 125 Vac 10 Amp, 250 Vac 3/4 HP, 125-250 Vac
ON	OFF	ON	DPDT	0121-0002N	DPDT	0121-0018N	DPDT	0121-0010N	
(ON)	OFF	(ON)	DPDT	0121-0004N	DPDT	0121-0020N	DPDT	0121-0012N	
ON	OFF	(ON)	DPDT	0121-0007N	DPDT	0121-0023N	DPDT	0121-0015N	
(ON)	ON	ON	SPTT	—	SPTT	—	SPTT	0127-0001N	
17 Amp, 3 Pole									
ON	—	OFF	3PST	0140-3020N	3PST	0140-3010N	3PST	0140-3000N	6 Amp, 600 Vac 17 Amp, 125 Vac 12 Amp, 250 Vac 2 HP, 480-600 Vac 3 Phase
(ON)	—	OFF	3PST	0140-3021N	3PST	0140-3011N	3PST	0140-3001N	6 Amp, 600 Vac 17 Amp, 125 Vac
ON	—	(OFF)	3PST	0140-3022N	3PST	0140-3012N	3PST	0140-3002N	12 Amp, 250 Vac 1-1/2 HP, 240 Vac
ON	—	ON	3PDT	0140-3024N	3PDT	0140-3014N	3PDT	0140-3004N	1,2 or 3 Phase
ON	—	(ON)	3PDT	0140-3025N	3PDT	0140-3015N	3PDT	0140-3005N	2 HP, 480-600 Vac 3 Phase
ON	OFF	ON	3PDT	0140-3023N	3PDT	0140-3013N	3PDT	0140-3003N	6 Amp, 600 Vac 17 Amp, 125 Vac 12 Amp, 250 Vac
ON	OFF	(ON)	3PDT	0140-3026N	3PDT	0140-3016N	3PDT	0140-3006N	1 HP, 125 Vac 1-1/2 HP, 250 Vac
(ON)	OFF	(ON)	3PDT	0140-3027N	3PDT	0140-3017N	3PDT	0140-3007N	1,2 or 3 Phase 2 HP, 480-600 Vac 3 Phase

Not CSA Listed.

() Momentary. Poles: SP = single pole, DP = double pole, ST = single throw, DT = double throw, TT = triple throw.

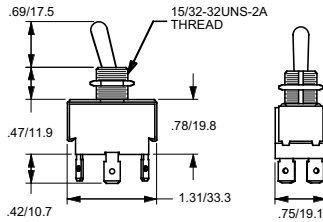
Shaded catalog numbers are normally stocked items. All other items are made to order. Contact your local sales representative for pricing.

0121/0140 Series Multi-Pole Toggle Switches

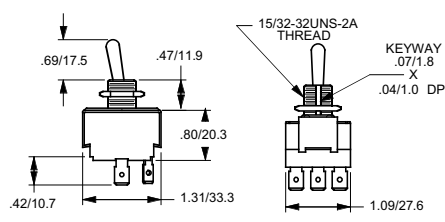
Switches

Circuitry			Screw Terminal		Solder Terminal		1/4" Q.C. Terminal		Rating
A	B	C	Poles	Catalog Number	Poles	Catalog Number	Poles	Catalog Number	
17 Amp, 4 Pole									
ON	—	OFF	4PST	0140-4020N	4PST	0140-4010N	4PST	0140-4000N	15 Amp, 125 Vac 10 Amp, 250 Vac 3/4 HP, 250 Vac 1,2 or 3 Phase
(ON)	—	OFF	4PST	0140-4021N ①	4PST	0140-4011N ①	4PST	0140-4001N ①	
ON	—	(OFF)	4PST	0140-4022N ①	4PST	0140-4012N ①	4PST	0140-4002N ①	
ON	—	ON	4PDT	0140-4024N	4PDT	0140-4014N	4PDT	0140-4004N	
ON	—	(ON)	4PDT	0140-4025N	4PDT	0140-4015N	4PDT	0140-4005N	
ON	OFF	ON	4PDT	0140-4023N	4PDT	0140-4013N	4PDT	0140-4003N	
ON	OFF	(ON)	4PDT	0140-4026N ①	4PDT	0140-4016N ①	4PDT	0140-4006N ①	
(ON)	OFF	(ON)	4PDT	0140-4027N	4PDT	0140-4017N	4PDT	0140-4007N	15 Amp, 125 Vac 10 Amp, 250 Vac 3/4 HP, 125-250 Vac 1,2 or 3 Phase

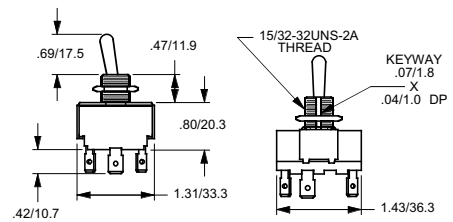
Dimensions in Inches/Millimeters



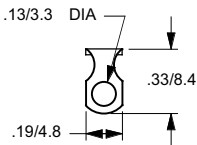
15 Amp, 2 Pole



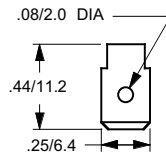
17 Amp, 3 Pole



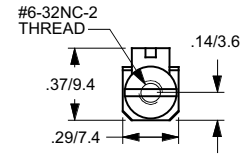
17 Amp, 4 Pole



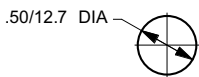
Solder Lug Terminal



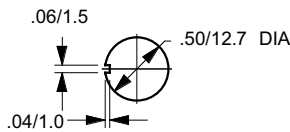
1/4" Q.C. Terminal



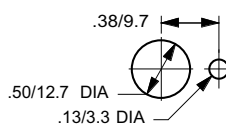
Screw Terminal



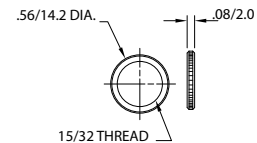
Mounting Hole



Mounting Hole With Keyway



Mounting Hole With Locking Ring



Knurled Nut

() Momentary. Poles: SP = single pole, DP = double pole, ST = single throw, DT = double throw.

① Not UL or CSA Listed.

Shaded catalog numbers are normally stocked items. All other items are made to order. Contact your local sales representative for pricing.

Momentary Contact Pushbutton Switches

Applications

- Single pole, high amperage – suitable for back panel applications.



Features

- Rugged switch mechanism ensures long life.
- Screw terminal.
- Mounting hardware consists of nickel plated hex nut and knurled nut.

Standard Materials

- Base: phenolic 302 °F/150 °C
- Bushing: nickel plated brass
- Push button: nickel plated brass

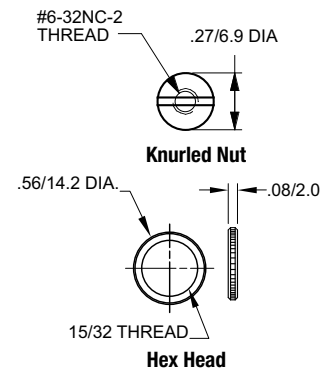
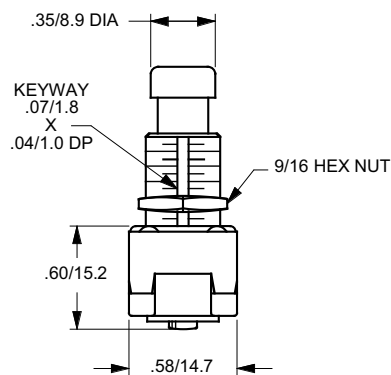
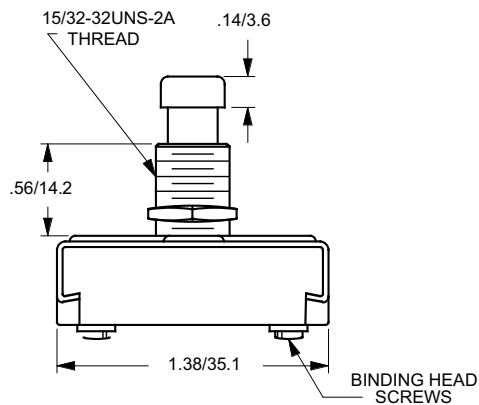
Certifications and Compliances

-  UL Recognized Component
- UL File Number: E335442
- UL Standard: 1054, Guide WORY2
- CSA File Number: 249055
- CSA Standard: C22.2 No. 55
-  RoHS Compliant












Circuitry			Poles	Ratings	Terminal Type	Catalog Number
A	B	C				
OFF	—	(ON)	SPST	15 Amp, 125 Vac 10 Amp, 250 Vac	Screw	100N

Dimensions in Inches/Millimeters



() Momentary.

Switches – Parts and Accessories

	Description	Catalog Number
	Indicating plate ON-OFF	1650
	Knurled nut .563" O.D. x .078" thick, 15/32" thread	1575
	Hex nut 15/32" thread x .073" thick	1610-2
	External tooth lockwasher .470" I.D. x .740" O.D.	1950
	Internal tooth lockwasher .472" I.D. x .593" O.D.	1957
	Locking ring .722" O.D. x .478" I.D. x .031" thick	25494
	Rubber boot with nut for toggle switches, 15/32" thread	0090-9988
	Rubber boot for toggle switches, snaps over toggle and nut	0090-9986
	Rubber boot with nut for pushbutton switches, 15/32" thread	0090-9973