

VERSICHARGE™ AC SERIES

Charging on with cutting-edge technology

usa.siemens.com/versicharge

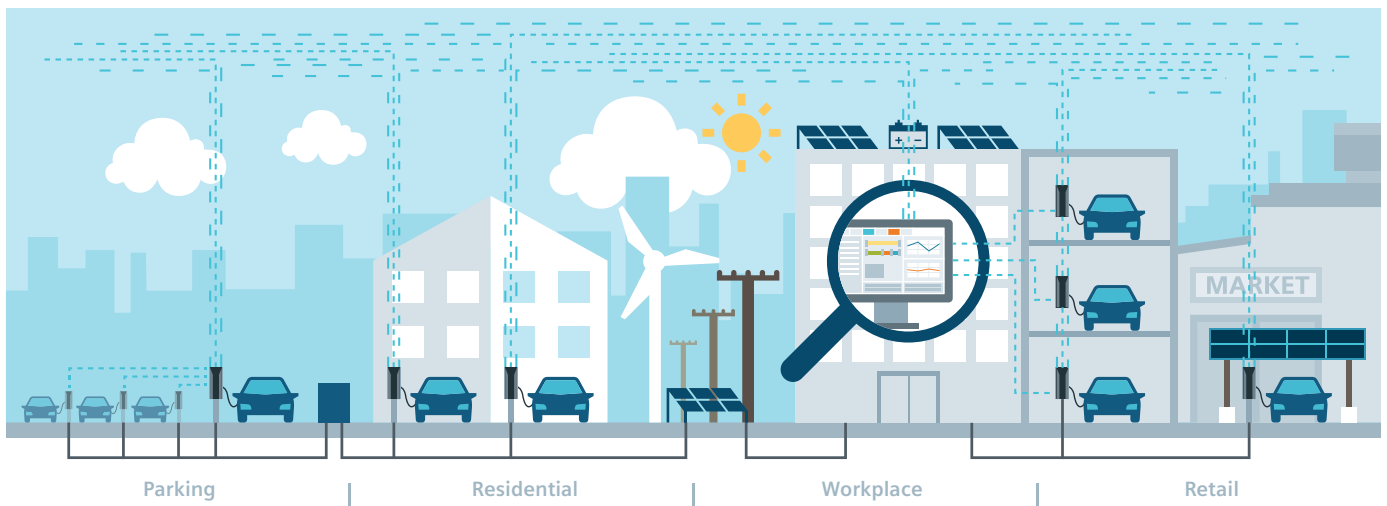
SIEMENS

The VersiCharge™ AC series

Powerful, versatile, cost-efficient

Siemens VersiCharge chargers have stood for superior quality, ruggedness, and proven technology for more than a decade and have reliably provided millions of charges to electric vehicle (EV) drivers worldwide. The new third generation VersiCharge AC charger is continuing this tradition with numerous groundbreaking enhancements, a fresh and appealing design, and up to 11.5 kW of alternating current (AC) charging power. It also provides various communication options, including the option to establish a parent-child configuration.

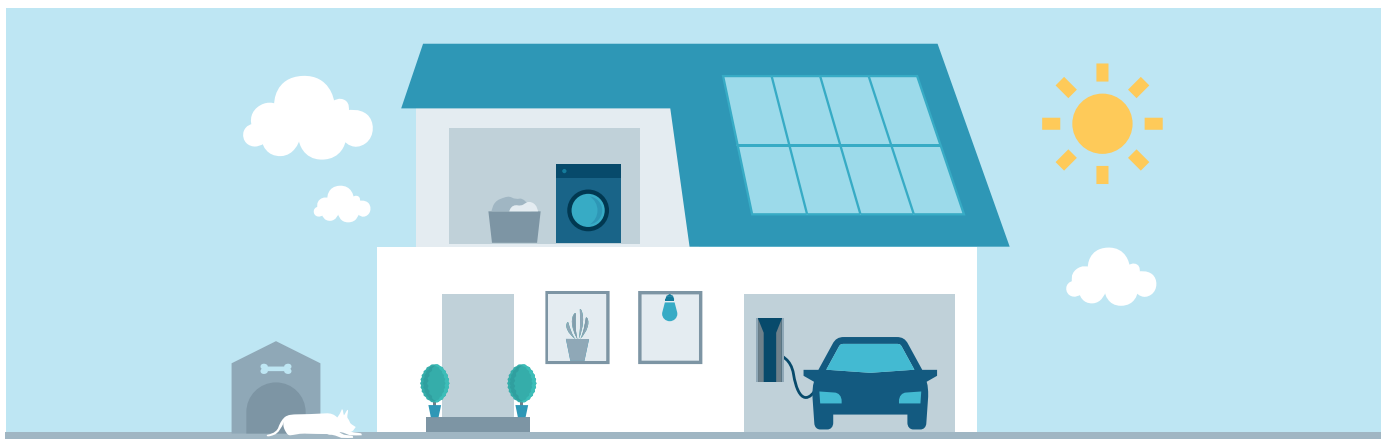
The VersiCharge AC charger can be connected to the customer's preferred back-end system, making it scalable and cost-efficient. It also can interact with a building management system, such as Siemens Designo CC and Win CC. The rugged and slender VersiCharge AC charger is suitable for both indoor and outdoor use and can either be mounted on a wall or a supplementary post.



The ideal solution for any application

Uniquely tailored for both commercial and home charging, the VersiCharge AC charger comes with an easy-to-use mobile application and can charge any standard EV.

The VersiCharge AC home charger is revenue accurate and offers cutting-edge technology with the most affordable pricing.



VersiCharge™ AC series – Technical Data

Features and functions

| | |
|---------------------------|---|
| Charging mode | Level 2 |
| Vehicle connection | J1772 plug with 20 ft cable, 40 A / 48 A / integrated cable management |
| AC power output | Single phase up to 9.6 kW (40 A) - requires a 50 A breaker, or 11.5 kW (48 A) - requires a 60 A breaker |
| Mounting options | Wall and post mounting, see accessories |
| Touch button | Time delay, return to maximum power level, reset ground fault |
| Charging status LEDs | Power, time delay, charging state, reduced power level, authentication, cold start |
| Communication status LEDs | Connected / not connected during operation, signal strength during commissioning |
| Parent / child network: | Connects up to nine child units by Wi-Fi (100 ft line of sight) |
| Load management | Via OCPP |

Communication

| | |
|---------------------|---|
| Interfaces | Ethernet, Wi-Fi, for parent units additionally LTE, WCDMA |
| User authentication | RFID (local Whitelist, MiFare) |
| Configuration | Via Siemens mobile app or the PC Configuration Tool |
| Back-end protocol | OCPP 1.6, upgradeable to OCPP 2.0.1 |
| Software upgrade | Over-the-air (OTA) |

Electrical design

| | |
|----------------------------|---|
| Power supply voltage | Single phase: 208 V / 240 V AC, 60 Hz |
| Rated current settings (A) | 12, 16, 24, 32, 40, 48 |
| Crosswire section | Single phase: 8 AWG / 6 AWG (90° C rated wire) |
| Network type | Single phase / split phase |
| Energy metering | Embedded metering, +/- 1% accuracy |
| Ground fault protection | 20 mA |
| Over voltage protection | Under voltage: 167 V (minimum 80 V) / over voltage: 267 V (maximum 275 V) |
| Over current protection | Current +10% above configured threshold, minimum +2A, 5 seconds |
| Operating altitude | 9,840 ft |

General design

| | |
|----------------------|---|
| Environmental rating | Indoor and outdoor, NEMA 4, IK 8 |
| Dimensions (HxWxD) | 16.10 in x 7.09 in x 3.78 in |
| Weight | 17 lbs |
| Ambient conditions | Operating temperature: -31° F - +122° F, storage temperature: -40° F to +140° F, 98% non-condensing |
| Colors | Silver metallic (Pantone 10077), black holster |

Certificates and standards

| | |
|------------|--|
| cUL listed | According to UL 1998, UL 991, UL2594/CSA C22.2 No.280/NMX-J-677-ANCE, UL 2231-1/CSA C22.2 No.281.1/NMX-J-668-1, UL 2231-2/CSA C22.2 No.281.2/NMX-J-668/2-ANCE, UL 2251/CSA C22.2 No.282/NMX-J-678-ANCE |
| EMC | FCC Part 15.247, FCC Part 15B, FCC Part 15C |

| | | Maximum current | Model number | Wi-Fi and Ethernet | RFID identification | Embedded metering | LTE WCDMA | Installed SIM card |
|---|--------|-----------------|--------------------|--------------------|---------------------|-------------------|-----------|--------------------|
| Residential version | Smart | 40 A | 8EM1312-4CF18-0FA3 | ✓ | - | ✓ | - | - |
| | | 48 A | 8EM1312-5CF18-0FA3 | | | | | |
| Commercial versions | Child | 40 A | 8EM1310-4CF14-0GA0 | ✓ | ✓ | ✓ | - | - |
| | | 48 A | 8EM1310-5CF14-0GA0 | | | | | |
| | Parent | 40 A | 8EM1310-4CF14-1GA2 | ✓ | ✓ | ✓ | ✓ | ✓ |
| | | 48 A | 8EM1310-5CF14-1GA2 | | | | | |
| Buy American Commercial "Blue" versions | Child | 48 A | 8EM13155CG140GF0 | ✓ | ✓ | ✓ | - | - |
| | Parent | 48 A | 8EM13155CG141GF2 | ✓ | ✓ | ✓ | ✓ | ✓ |

Back-end protocol: OCPP 1.6, upgradeable to OCPP 2.0.1

Data plans for chargers: Siemens offers chargers with data plans for customer convenience. See table below for data plans.

| Description | Catalog Number |
|---|------------------|
| Multi-Carrier Pooled Data Plan - 1-year data plan, 1 GB capped monthly bandwidth (supports one parent charger and nine child units). This is an annual fee. | US2:DATA1YRMULTI |
| Extended Warranty per Level 2 Charger - 1 additional year, no in / out services | US2:VCEXWAR1YR |
| Extended Warranty per Level 2 Charger - 2 additional years, no in / out services | US2:VCEWAR2YR |
| Standard Post - can support one or two chargers. Comes with install kit, made of aluminum. Includes 3-year warranty. | US2:VCPSTGRY2 |
| Standard Post Cable Retraction Unit - used with US2:VCPSTGRY2 post design. One required for each charger. Includes 3-year warranty. | US2:VCCMSSP |



Legal Manufacturer

Siemens Industry, Inc.
3617 Parkway Ln
Peachtree Corners, GA 30092
United States of America

Telephone: +1 (800) 333-7421
recharge.us@siemens.com

Article No. SIDS-B40060-00-4AUS-R03
© 04.2022, Siemens Industry, Inc.

This document contains a general description of available technical options only, and its effectiveness will be subject to specific variables, including field conditions and project parameters. Siemens does not make representations, warranties, or assurances as to the accuracy or completeness of the content contained herein. Siemens reserves the right to modify the technology and product specifications in its sole discretion without advance notice.