

SLATER® PLASTIC BOXES

4" Square Boxes & Covers



4SBC



RC1



RC2



S4418BAC



S4421RAC



S4421SAC

CATALOG NUMBER	CU. IN. VOL.	DESCRIPTION	DIMENSIONS			WIRE FILL (AWG)	QTY. PER CARTON
			L	W	D		
COVERS FOR 4" SQUARE BOXES							
4SBC	-	4" square flat blank cover - gray	4¼	4¼	N/A	-	50
4SBCW	-	4" square flat blank cover - white	4¼	4¼	N/A	-	50
RC1	3.2	Single gang device cover, raised ¾"	4¼	4¼	¾	-	100
RC2	5.3	Two gang device cover, raised ¾"	4¼	4¼	¾	-	100
4" SQUARE BOXES WITH THREADED MOUNTING HOLES							
S4418BAC	17.0	Shallow 4" square. Captive mounting nail each end. 2 Auto/Clamps® each end. 2 #8 mounting screws factory installed.	4¼	4¼	1¼	9 No. 14 8 No. 12 7 No. 10	50
S4421RAC	21.0	4" square. Captive mounting nail each end. 3 Auto/Clamps® each end, 2 on side opposite to nails. 2 #8 mounting screws factory installed.	4¼	4¼	1½	10 No. 14 9 No. 12 8 No. 10	100
S4421SAC	21.0	4" square. For wood and steel stud mounting. 3 Auto/Clamps each end, 2 on side opposite bracket. 2 #8 mounting screws factory installed.	4¼	4¼	1½	10 No. 14 9 No. 12 8 No. 10	50
S4435RAC	35.0	4" square. Captive mounting nail each end. 3 Auto/Clamps® each end, 2 on side adjacent to nails. 2 #8 mounting screws factory installed.	4¼	4¼	2¾	17 No. 14 15 No. 12 14 No. 10	50
S4435SAC	35.0	4" square. For wood and steel stud mounting. 3 Auto/Clamps® each end, 2 on side opposite bracket. 2 #8 mounting screws factory installed.	4¼	4¼	2¾	17 No. 14 15 No. 12 14 No. 10	50



S4435RAC

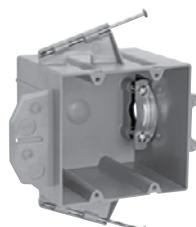


S4435SAC

All boxes are UL Listed. UL Classified for 2 Hour Fire Resistance. (Does not apply to 4SBC and 4SBCW.)



P242SRD



P242RRD

CATALOG NUMBER	CU. IN. VOL.	DESCRIPTION	DIMENSIONS			WIRE FILL (AWG)	QTY. PER CARTON
			L	W	D		
RANGE & DRYER BOXES							
P242SRD	42.0	½" offset for wood or steel stud mount with metal cable clamp. Captive mounting screw each end.	3¾	4	4	16 No. 10 14 No. 8 8 No. 6	12
P242RRD	42.0	½" offset for wood or steel stud mount with metal cable clamp. Captive mounting nail each end.	3¾	4	4	16 No. 10 14 No. 8 8 No. 6	12

All boxes are UL Listed. UL Classified for 2 Hour Fire Resistance (pending).

SLATER® PLASTIC BOXES

4" Square Boxes & Covers



4SBC



RC1



RC2



S4418BAC



S4421RAC



S4421SAC

CATALOG NUMBER	CU. IN. VOL.	DESCRIPTION	DIMENSIONS			WIRE FILL (AWG)	QTY. PER CARTON
			L	W	D		
COVERS FOR 4" SQUARE BOXES							
4SBC	-	4" square flat blank cover - gray	4¼	4¼	N/A	-	50
4SBCW	-	4" square flat blank cover - white	4¼	4¼	N/A	-	50
RC1	3.2	Single gang device cover, raised ¾"	4¼	4¼	¾	-	100
RC2	5.3	Two gang device cover, raised ¾"	4¼	4¼	¾	-	100
4" SQUARE BOXES WITH THREADED MOUNTING HOLES							
S4418BAC	17.0	Shallow 4" square. Captive mounting nail each end. 2 Auto/Clamps® each end. 2 #8 mounting screws factory installed.	4¼	4¼	1¼	9 No. 14 8 No. 12 7 No. 10	50
S4421RAC	21.0	4" square. Captive mounting nail each end. 3 Auto/Clamps® each end, 2 on side opposite to nails. 2 #8 mounting screws factory installed.	4¼	4¼	1½	10 No. 14 9 No. 12 8 No. 10	100
S4421SAC	21.0	4" square. For wood and steel stud mounting. 3 Auto/Clamps each end, 2 on side opposite bracket. 2 #8 mounting screws factory installed.	4¼	4¼	1½	10 No. 14 9 No. 12 8 No. 10	50
S4435RAC	35.0	4" square. Captive mounting nail each end. 3 Auto/Clamps® each end, 2 on side adjacent to nails. 2 #8 mounting screws factory installed.	4¼	4¼	2¾	17 No. 14 15 No. 12 14 No. 10	50
S4435SAC	35.0	4" square. For wood and steel stud mounting. 3 Auto/Clamps® each end, 2 on side opposite bracket. 2 #8 mounting screws factory installed.	4¼	4¼	2¾	17 No. 14 15 No. 12 14 No. 10	50



S4435RAC

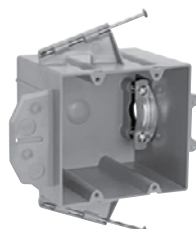


S4435SAC

All boxes are UL Listed. UL Classified for 2 Hour Fire Resistance. (Does not apply to 4SBC and 4SBCW.)



P242SRD



P242RRD

CATALOG NUMBER	CU. IN. VOL.	DESCRIPTION	DIMENSIONS			WIRE FILL (AWG)	QTY. PER CARTON
			L	W	D		
RANGE & DRYER BOXES							
P242SRD	42.0	½" offset for wood or steel stud mount with metal cable clamp. Captive mounting screw each end.	3¾	4	4	16 No. 10 14 No. 8 8 No. 6	12
P242RRD	42.0	½" offset for wood or steel stud mount with metal cable clamp. Captive mounting nail each end.	3¾	4	4	16 No. 10 14 No. 8 8 No. 6	12

All boxes are UL Listed. UL Classified for 2 Hour Fire Resistance (pending).