

# LEDiescent™ LED T5HO Lamps

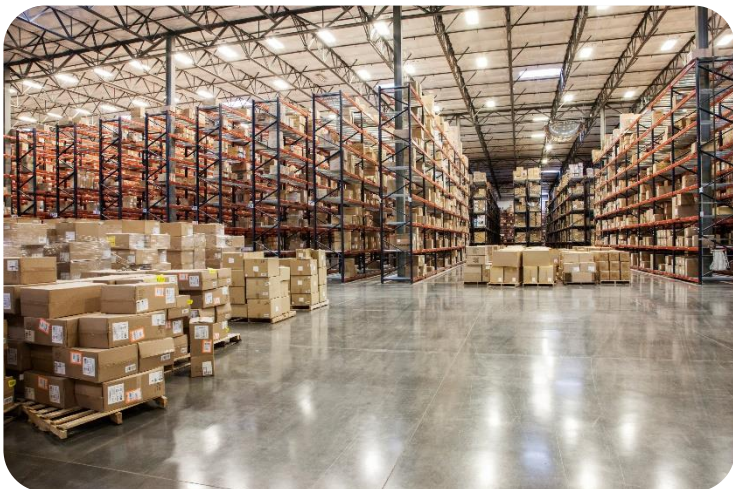
---



Jennifer Habel

# LEDlescent™ LED T5HO Lamps

## Key Features and Benefits



### Applications

- Manufacturing
- Warehouse
- Gymnasium
- Other High-bay

**Application:** LEDlescent T5HO Ballast-Free lamps are an energy saving alternative, designed to replace traditional fluorescent T5HO in manufacturing, warehouse, gymnasiums, and other high-bay applications by bypassing the existing ballast to operate directly on 120-277V.

- The double-ended design, with a built-in safety circuit, ensures safe and easy installation
  - Double-ended platform where lamp is wired end-to-end preventing non passive failure of a fluorescent lamp should it be inadvertently installed in the fixture
  - Patented built-in safety circuit prevents current from flowing through the lamp when only one end is engaged in the socket thereby eliminating potential shock hazard
  - No risk of electrical arcing between the lamp pins and the lamp holders
- Energy savings of up to 60% compared to Fluorescent T5HO can be enhanced with occupancy or vacancy sensors.
- Optimized glass optic (180° beam angle) and symmetrical base design for uniform light distribution
- DLC listing maximizes rebate opportunities
- Up to 145LPW

Wattage	CCT (K)	Sizes	Voltage	Warranty
24W	3000, 3500, 4000, 5000	4ft	120-277	5 years



# LEDiescent™ LED T5HO Lamps

## Product Offering

Item Number	Ordering Abbreviation	Wattage (W)	Replaces	Input Voltage (V)	Dimming	CRI	Color Temperature (CCT)	Size	Lumens	LPW	Life	DLC
40608	LED24T5HOL48FG830BF	24	54W T5HO FLUORESCENT	120-277	n/a	82	3500K	4ft	3400	141	50,000	Std
40609	LED24T5HOL48FG835BF	24		120-277	n/a	82	4000K	4ft	3400	141	50,000	Std
40610	LED24T5HOL48FG841BF	24		120-277	n/a	82	5000K	4ft	3500	145	50,000	Std
40611	LED24T5HOL48FG850BF	24		120-277	n/a	82	3500K	4ft	3500	145	50,000	Std



# LEDiescent™ LED T5HO Lamps

## Nomenclature Review

---

### Ordering Guide

LED	24	T5HO	L48	FG	8	XX	BF
LED	Wattage 24 = 24 Watts	Lamp Type T5HO	Length 48"	FG = Frosted Glass	CRI 8 = 82	Color Temperature 30 = 3000K 35 = 3500K 41 = 4100K 50 = 5000K	Ballast-Free

## LEDiescent™ LED T5HO Lamps

### Key Takeaways

---

- Available in 4' length with optimized glass optic (180° Beam Angle) and symmetrical base design for uniform light distribution .
- 120-277V direct wire (bypass ballast), double-ended design, with a built-in safety circuit, ensures safe and easy installation
- Up to 145LPW
- Energy savings of up to 60% compared to Fluorescent T5HO can be enhanced with occupancy or vacancy sensors.
- DLC listing maximizes rebate opportunities



---

# THANK YOU