

## STANLEY® BI-MATERIAL ADJUSTABLE WRENCHES

- Tapered jaw design allows for work in limited space applications.
- Slip-resistant Bi-Material handle for a comfortable grip.
- Wide-capacity jaw accepts a wide range of fastener sizes.
- Knurl adjusting mechanism for quick and precise adjustment.
- Laser-etched fractional and mm jaw scale for easy size adjustment.
- Built-in tension spring stabilizes movable jaw.
- Forged chrome vanadium steel is strong and durable.
- Handle hole for tethering, hanging or storage.
- Meets ANSI specifications.



Product #	Length	Jaw Capacity	Head Width
90-947	6-11/16 in (170 mm)	1 in (25 mm)	11/25 in (11 mm)
90-948	8-5/8 in (220 mm)	1-1/4 in (32 mm)	11/20 in (14 mm)
90-949	10-3/8 in (264 mm)	1-5/16 in (33 mm)	11/18 in (16 mm)
90-950	12-5/8 in (321 mm)	1-9/16 in (40 mm)	3/4 in (19 mm)

## STANLEY® CUSHION GRIP ADJUSTABLE WRENCHES

- Forged alloy steel body for strength and durability.
- Extra wide jaw capacity opens wider than standard adjustable wrenches.
- Laser-etched fractional and Metric scale on jaw.
- Chrome plated for corrosion resistance.
- Knurl turns smoothly for easy operation.
- Dipped handle for comfort and a slip resistant grip.
- Handle hole for tethering, hanging or storage.



Product #	Length	Jaw Capacity	Head Width
85-764	6-1/2 in (165 mm)	1 in (25 mm)	7/16 in (11 mm)
85-763	8-1/4 in (210 mm)	1-1/4 in (32 mm)	7/32 in (6 mm)
85-762	10-1/2 in (267 mm)	1-7/16 in (37 mm)	9/32 in (7 mm)

## STANLEY® ADJUSTABLE WRENCHES

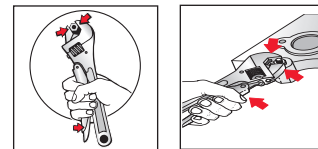
- Adjustable jaw design allows tool to grip many fastener sizes.
- Knurl adjusting mechanism for quick and precise adjustment.
- Laser-etched fractional and mm jaw scale for easy size adjustment.
- Built-in tension spring stabilizes movable jaw.
- Forged chrome vanadium steel is strong and durable.
- Lightweight handle design.
- Handle hole for tethering, hanging or storage.
- Polished chrome head and chrome-plated body for anti-corrosion protection.
- Meets ANSI specifications.



Product #	Length	Jaw Capacity	Head Width
87-367	6-1/8 in (156 mm)	17/32 in (13 mm)	3/8 in (10 mm)
87-369	8 in (203 mm)	1 in (25 mm)	1/2 in (13 mm)
87-471	10-1/8 in (257 mm)	1-1/8 in (29 mm)	1/2 in (13 mm)
87-473	12 in (305 mm)	1-3/8 in (35mm)	3/4 in (19 mm)

## STANLEY® LOCKING ADJUSTABLE WRENCH

- Anti-slip mechanism locks the movable jaw and tightly grips onto fastener.
- Wide locking handle allows for a sturdy and comfortable grip.
- Knurl adjusting mechanism for quick and precise adjustment.
- Built-in tension spring stabilizes movable jaw.
- Forged chrome vanadium steel is strong and durable.
- Polished chrome head and chrome-plated body for anti-corrosion protection.
- Meets ANSI specifications.
- Handle hole for tethering, hanging or storage.



Product #	Length	Jaw Capacity	Head Width
85-610	9-15/16 in (252 mm)	1-1/4 in (32 mm)	5/8 in (16 mm)

## FEATURES & BENEFITS – STANLEY® COMBINATION WRENCHES

- Chrome vanadium steel forging for durability and high torque.
- Max-Drive™ design of the box end allows for 15% more torque\* than standard wrenches and helps reduce fastener rounding.
- 15° box end offset for additional knuckle clearance.
- Full polish plating for anti-corrosion protection and easy cleaning.
- Designed to exceed ANSI industrial specifications.

\*Than standard wrenches



## STANLEY® FRACTIONAL SATIN FINISH COMBINATION WRENCHES – 12 POINT

Product #	Opening
86-831	1/4 in
86-832	5/16 in
86-833	3/8 in
86-834	7/16 in
86-835	1/2 in
86-836	9/16 in
86-837	5/8 in
86-838	11/16 in
86-839	3/4 in
86-840	13/16 in
86-841	7/8 in
86-842	15/16 in
86-843	1 in
86-844	1-1/16 in
86-845	1-1/8 in



(CONTINUED ON NEXT PAGE)



**STANLEY® FRACTIONAL SATIN FINISH COMBINATION WRENCHES – 12 POINT (CONTINUED)**

Product #	Opening
86-846	1-1/4 in
89-715	1-5/16 in
89-716	1-3/8 in
89-717	1-7/16 in
89-718	1-1/2 in
89-719	1-5/8 in
89-720	1-3/4 in
89-711	1-13/16 in
89-712	1-7/8 in
89-713	2 in



**20 PIECE STANLEY® FRACTIONAL/METRIC SATIN FINISH COMBINATION WRENCH SET - 12 POINT**

Product #: 85-783

- In plastic storage rack.

Pieces	Contents
20	<ul style="list-style-type: none"> <li>Ⓢ (10) 1/4, 5/16, 3/8, 7/16, 1/2, 9/16, 5/8, 11/16, 3/4, 7/8 in</li> <li>Ⓢ (10) 8, 9, 10, 11, 12, 13, 14, 15, 17, 18 mm</li> </ul>



**14 PIECE STANLEY® FRACTIONAL SATIN FINISH COMBINATION WRENCH SET - 12 POINT**

Product #: 85-990

- Pouch included.

Pieces	Contents
14	<ul style="list-style-type: none"> <li>Ⓢ 3/8, 7/16, 1/2, 9/16, 5/8, 11/16, 3/4, 13/16, 7/8, 15/16, 1, 1-1/16, 1-1/8, 1-1/4 in</li> </ul>



**11 PIECE STANLEY® FRACTIONAL SATIN FINISH COMBINATION WRENCH SET - 12 POINT**

Product #: 85-450

- Pouch included.

Pieces	Contents
11	<ul style="list-style-type: none"> <li>Ⓢ 3/8, 7/16, 1/2, 9/16, 5/8, 11/16, 3/4, 13/16, 7/8, 15/16, 1 in</li> </ul>



## 11 PIECE STANLEY® FRACTIONAL CHROME FINISH COMBINATION WRENCH SET - 12 POINT

Product #: 94-385W

- In plastic storage rack.

Pieces	Contents
11	⑫ 1/4, 5/16, 11/32, 3/8, 7/16, 1/2, 9/16, 5/8, 11/16, 3/4, 13/16 in



## 11 PIECE STANLEY® METRIC CHROME FINISH COMBINATION WRENCH SET - 12 POINT

Product #: 94-386W

- In plastic storage rack.

Pieces	Contents
11	⑫ 7, 8, 9, 10, 11, 12, 13, 14, 15, 16, 17 mm



## 6 PIECE STANLEY® FRACTIONAL CHROME FINISH COMBINATION WRENCH SET - 12 POINT

Product #: 85-927

- In plastic storage rack.

Pieces	Contents
6	⑫ 1/4, 3/8, 7/16, 1/2, 9/16, 5/8 in



## 6 PIECE STANLEY® METRIC CHROME FINISH COMBINATION WRENCH SET - 12 POINT

Product #: 85-928

- In plastic storage rack.

Pieces	Contents
6	⑫ 10, 11, 12, 13, 14 & 15 mm



## 13 PIECE STANLEY® FRACTIONAL FULL POLISH COMBINATION WRENCH SET - 12 POINT

Product #: 87-244

- Pouch included.

Pieces	Contents
13	⑫ 1/4, 9/32, 5/16, 11/32, 3/8, 7/16, 1/2, 9/16, 5/8, 11/16, 3/4, 13/16, 7/8 in



## 13 PIECE STANLEY® METRIC FULL POLISH COMBINATION WRENCH SET - 12 POINT

Product #: 87-245

- Pouch included.

Pieces	Contents
13	⑫ 8, 9, 10, 11, 12, 13, 14, 15, 16, 17, 18, 19, 20 mm



## 7 PIECE STANLEY® FRACTIONAL RATCHETING WRENCH SET - 12 POINT

Product #: 94-542W

Pieces	Contents
7	⑫ 3/8, 7/16, 1/2, 9/16, 5/8, 11/16, 3/4 in



## 7 PIECE STANLEY® METRIC RATCHETING WRENCH SET - 12 POINT

Product #: 94-543W

Pieces	Contents
7	⑫ 9, 10, 11, 12, 13, 14, 15 mm



## STANLEY® PIPE WRENCHES

- Durable heavy-duty cast-iron housing.
- Strong I-beam handle design withstands high torque.
- Floating hook jaw design allows ratcheting function.
- Durable drop-forged hook jaw for long life.

Product #	Length	Jaw Capacity
87-622	9-3/4 in (248 mm)	2 in (51 mm)
87-624	15-1/2 in (394 mm)	2-3/4 in (70 mm)



### FEATURES & BENEFITS – STANLEY® RATCHETS

- Stanley® ratchets and accessories are designed to meet or exceed ANSI specifications.
- Forged from high-quality steel and finished in high-polish chrome.
- Selected Stanley® high-torque ratchets have a Quick Release™ mechanism for one-handed use.
- Sockets and extensions remain locked onto the drive until disengaged with an easy-to-reach, low-profile quick-release button.
- Stanley® Pear Head Ratchets have a slim profile and a small 7° arc-swing for accessing hard-to-reach fasteners.
- Ratchet handles are ergonomically designed.