

lenses

bulbs

ballasts


PLAST D FUSERS

www.plast-d-fusers.com



lenses | bulbs | ballasts

PLAST-D-FUSERS

Dear Valued Plast-D-Fusers Customer,

It is with great pleasure that we present our new 2011 Plast-D-Fusers catalog. This catalog is the biggest and best guide to our various product lines in our 31 year history. Along with our extensive line of light diffusing lenses, louvers, globes, tube guards and vapor proof enclosures, we are now offering a great selection of light bulbs and ballasts.

All of our products are stocked at our Texas warehouse for same day or next day shipping – and remember, we can custom cut, assemble, bend and mold our materials to provide literally thousands of lighting products.

Thank you for your past business and we hope this new catalog makes doing business with Plast-D-Fusers easier than ever.

**Best regards,
Your Friends at Plast-D-Fusers**

**Ph 972.620.0555
Toll Free 800.343.8737
Fax 972.243.7479
info@plast-d-fusers.com**

**2055 Luna Road, Suite 156
Carrollton, TX 75006**

www.plast-d-fusers.com



Table of Contents

Prismatic Lenses

Acrylic Sheet PS21	.4
Polycarbonate Lens	.5
Hi-Impact Acrylic	.5
Lensgard Security Lens	.6
Prismatic Sheet PS15	.6
Prismatic Sheet PS35	.7
Prismatic Sheet PS49	.7
Prismatic Sheet K23	.8
Plexiglass Sheet	.8
Holophane Control Lens	.9
Cracked Ice Sheet PS100	.9
Smooth/Stipple Sheet PS81	.10
Prismatic specialty lens KSH23®	.11
Lineal Prismatic specialty lens KSH25®	.11

U.V. Products

U.V. Filtering & Transmitting Lenses

KSH-12 Uvalite Lens	.12
RFI (Radio Frequency Interference) PS21	.12
K23 UVBWF Prismatic Sheet	.13

U.V. Filtering Sleeves

Reference charts	.14/15
U.V. Litho Tube Guard	.16
Special U.V. Filtering Sleeves	.16

Louvers

Plastic Parabolic

P1 Series Plastic Louver (1/2" Cell)	.17
P2 Series (1-1/2" Cell)	.18
P3 Series (3/4" Cell)	.19
P5 Series (3/4" Cell)	.20
P6 Series – Parahex Louver	.21
Louver Lens	.22
AngleFlex™ Louver	.22

Decorative Louvers

Decorona 33™ Louver	.23
Decorona 50™ Louver	.23

Plastic Eggcrate

TC Series 3/8" Thick	.24
T Series 1/2" Thick	.24

Aluminum Eggcrate

AL & AL-1 Series Aluminum Eggcrate	.25
L14 Series Aluminum Parabolic Louver	.26
LB14 Series Aluminum Parabolic Baffles	.27

Diffusers

Drop Dish Flanged	.28
Snap Dish	.29
Maximizer	.30
Cloud	.31
Mini Cloud	.31
Cloud Bracket Assembly	.32
Squareline	.33
Mini Squareline	.33
Circline/Cloudlite	.34
Drum	.35
Round Dome	.36
H.I.D.	.37

Vapor Proof

Vapor Proof Gasketed Enclosures	.38
Citadel 2™ Vapor Proof Enclosures	.39
Vapor Proof Lenses	.40/41
Vapor Proof Accessories	.42

Tube Guards

Sleeves Clear and Colored	.43
U.V. Sleeves	.44
Accessories	.45

Wire Guards

Fluorescent Lighting Fixture Protection	.46-48
Strip Light Guard	.49
Round Bay Light Guards	.50
Clips	.51

Globes

Globes/Cubes/Ellipsoids/Domes	.52-59
Street Light Ornamental Globes/Jars	.60/61
Globe Accessories	.62/63
Recommended Maximum Wattage	.64

Miscellaneous

Door Frames and Accessories	.65
Vandal/Security Lenses	.66-68
String of Lights	.69
LED Emergency Lighting & Exit Signs	.70

Long Life Light Bulbs

Ballasts	.81
How to Order a Wrap Diffuser	.82
SkyScapes	.82

Wrap Around Profiles

.....Back of catalog

/ Acrylic Sheet /

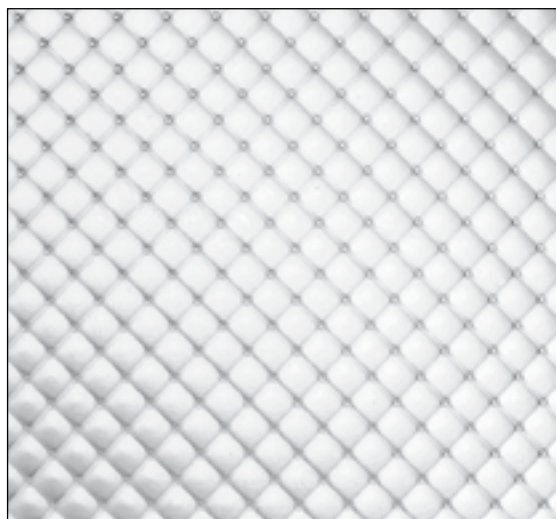
PART #	DESCRIPTION	COLOR	STANDARD SIZE
PS21-100-14	.100 Acrylic	Clear	11 3/4" x 47 3/4"
PS21-100-22	.100 Acrylic	Clear	23 3/4" x 23 3/4"
PS21-100-24	.100 Acrylic	Clear	23 3/4" x 47 3/4"
PS21-100-24-NS	.100 Acrylic	Clear	22 1/2" x 46 1/2"

PS21-110-14	.110 Acrylic	Clear	11 3/4" x 47 3/4"
PS21-110-22	.110 Acrylic	Clear	23 3/4" x 23 3/4"
PS21-110-24	.110 Acrylic	Clear	23 2/4" x 47 3/4"
PS21-110-44	.110 Acrylic	Clear	50" x 50"

PS21-125-14	.125 Acrylic	Clear	11 3/4" x 47 3/4"
PS21-W-125-14	.125 Acrylic	White	11 3/4" x 47 3/4"
PS21-125-14X	.125 Acrylic	Clear	12 1/2" x 54 1/2"
PS21-125-22	.125 Acrylic	Clear	23 3/4" x 23 3/4"
PS21-W-125-22	.125 Acrylic	White	23 3/4" x 23 3/4"
PS21-125-22X	.125 Acrylic	Clear	25" x 25"
PS21-125-24	.125 Acrylic	Clear	23 3/4" x 47 3/4"
PS21-125-24-NS	.125 Acrylic	Clear	22 1/2" x 46 1/2"
PS21-W-125-24	.125 Acrylic	White	23 3/4" x 47 3/4"
PS21-125-24X	.125 Acrylic	Clear	25" x 54 1/2"
PS21-125 44X	.125 Acrylic	Clear	50" x 56"
PS21-125-50X	.125 Acrylic	Clear	50" x 100"

PS21- 135 44X	.135 Acrylic	Clear	50" x 54 1/2"

PS21- 187 44X	.187 Acrylic	Clear	48" x 96"



PS21 ACRYLIC SHEET

PS21-XX XX Custom Sizes Available! Call with your requirements.

Product Description:

- * Most popular pattern consisting of uniform array of 3/16" square base, female conical prism on a 45° axis.
- * Industry standard, offering maximum efficiency with moderate glare control.
- * Manufactured from 100% virgin acrylic. Under normal conditions, acrylic panels will perform satisfactorily for 20 years.

PROFILE



Remember...
Most light fixtures require the lens to be cut to size to fit into the door frame. Just specify the existing lens size, or tell us the fixture make and model number and we'll cut to fit.

Non-standard sizes are available.

Give us a call for a quote!

* Minimum quantities and/or set up charges may apply. Please call for a quotation.



PS21 POLYCARBONATE

/ Polycarbonate /

PART #	DESCRIPTION	COLOR	STANDARD SIZE
PS21-PC-125-14	.125 Polycarbonate	Clear	11 3/4" x 47 3/4"
PS21-PC-125-22	.125 Polycarbonate	Clear	23 3/4" x 23 3/4"
PS21-PC-125-24	.125 Polycarbonate	Clear	23 3/4" x 47 3/4"
PS21-PC-125-44X	.125 Polycarbonate	Clear	50" x 50"

PS21-PC-125-XX Custom Sizes Available! Call with your requirements.

Product Description:

- * Virtually indestructible material, suitable for applications where impact strength is of major concern such as security lighting, vandal fixtures, prisons, sport courts, outdoor lighting, etc.



PS21 HI - IMPACT ACRYLIC

/ Hi-Impact Acrylic /

PART #	DESCRIPTION	COLOR	STANDARD SIZE
PS21-HI-125-14	.125 Hi-Impact Acrylic	Clear	11 3/4" x 47 3/4"
PS21-HI-125-22	.125 Hi-Impact Acrylic	Clear	23 3/4" x 23 3/4"
PS21-HI-125-24	.125 Hi-Impact Acrylic	Clear	23 3/4" x 47 3/4"
PS21-HI-125-44X	.125 HI-Impact Acrylic	Clear	50" x 50"

PS21-HI-125-XX Custom Sizes Available! Call with your requirements.

Product Description:

- * Approximately 10 times stronger than acrylic.
- * Used in applications where impact strength is important such as vaporproof units, outdoor fixtures and vandal resistant lenses.

*Minimum quantities and/or set up charges may apply. Please call for a quotation.

/ Languard® Security Lens /

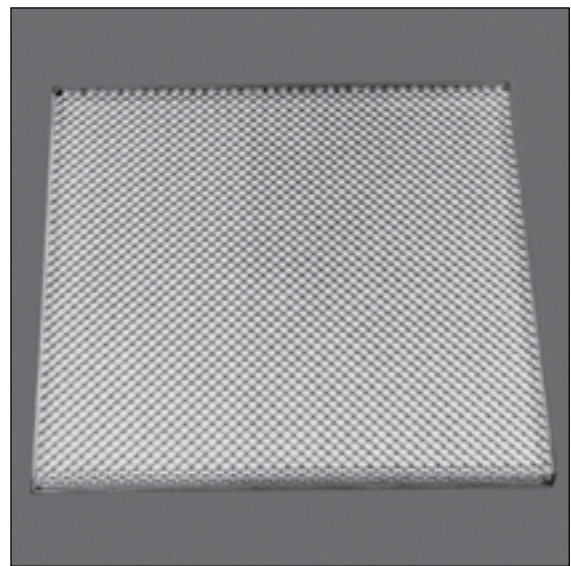
PART #	DESCRIPTION	COLOR	STANDARD SIZE
X21-PA250-237477	.250 Security Lens	Clear	23 3/4" x 47 3/4"
X21-PA375-237477	.375 Security Lens	Clear	23 3/4" x 47 3/4"

X21-P375 XX Custom Sizes Available! Call with your requirements.

Product Description:

- * Composite lens consisting of a prismatic acrylic lens and a protective polycarbonate shielding. The perimeter of the lens is sealed by a specially designed channel which is chemically welded.
- * Designed for areas where vandalism or accidental damage may be a problem. It is used in different applications such as school gymnasiums, racket ball courts, psychiatric wards, detention facilities, public areas, etc.

PROFILE



LENSGUARD® SECURITY LENS

* Minimum quantities and/or set up charges may apply. Please call for a quotation.

/ P15 Prismatic Sheet /

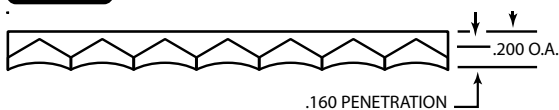
PART #	DESCRIPTION	COLOR	MAX CUT SIZE
P15-200-14	.200 Acrylic	Clear	11 3/4" x 47 3/4"
P15-200-22	.200 Acrylic	Clear	23 3/4" x 23 3/4"
P15-200-24	.200 Acrylic	Clear	23 3/4" x 47 3/4"
P15-200-44X	.200 Acrylic	Clear	47 3/4" x 47 3/4"

P15-200-XX Custom Sizes Available! Call with your requirements.

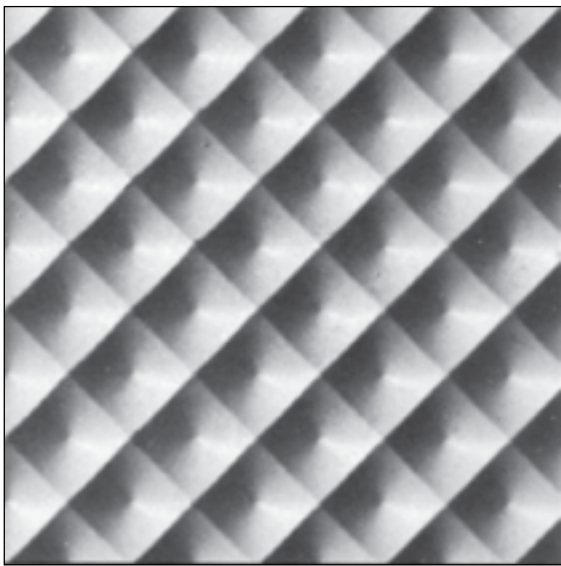
Product Description:

- * 3/8" square based female conical prisms placed parallel and perpendicular to the length and width of the panel.
- * .200 thickness provides rigid structural characteristics for areas up to 4' x 4'.
- * Applications include frameless fixtures and large areas requiring no objectionable sagging.

PROFILE



P15 PRISMATIC SHEET



PS35 PRISMATIC SHEET

/ PS35 Prismatic Sheet /

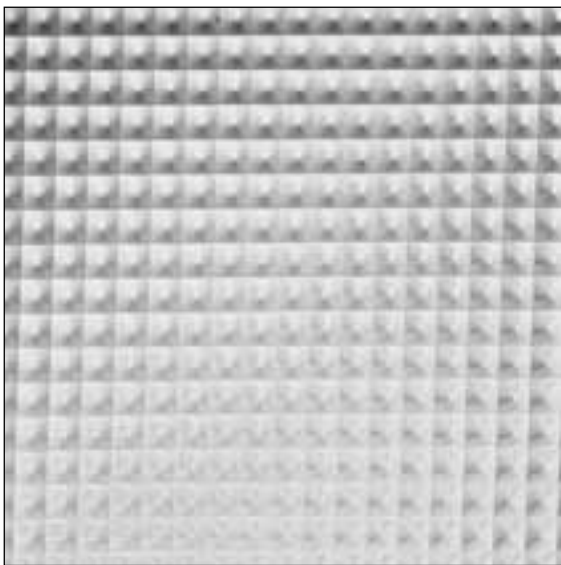
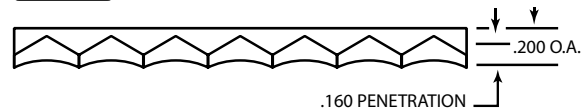
PART #	DESCRIPTION	COLOR	MAX CUT SIZE
PS35-200-14	.200 Acrylic	Clear	11 3/4" x 47 3/4"
PS35-200-14X	.200 Acrylic	Clear	12" x 50"
PS35-200-22	.200 Acrylic	Clear	23 3/4" x 23 3/4"
PS35-200-22X	.200 Acrylic	Clear	24 1/8" x 24 7/8"
PS35-200-24	.200 Acrylic	Clear	23 3/4" x 47 3/4"
PS35-200-24X	.200 Acrylic	Clear	24 1/8" x 50"
PS35-200-44X	.200 Acrylic	Clear	48 1/2" x 50"

PS35-200-XX Custom Sizes Available! Call with your requirements.

Product Description:

- * Distinctive pattern consisting of uniform array of 3/8" square base, female conical prism on a 45° axis.
- * .200 thickness provides rigid structural characteristics for areas up to 4' x 4'.
- * Applications include frameless fixtures and large areas requiring no objectionable sagging.

PROFILE



PS49 PRISMATIC SHEET

/ PS49 Prismatic Sheet /

PART #	DESCRIPTION	COLOR	STANDARD SIZE
PS49-150-14	.150 Acrylic	Clear	11 3/4" x 47 3/4"
PS49-150-22	.150 Acrylic	Clear	23 3/4" x 23 3/4"
PS49-150-24	.150 Acrylic	Clear	23 3/4" x 47 3/4"
PS49-150-44	.150 Acrylic	Clear	47 3/4" x 47 3/4"

Product Description:

- * Prismatic pattern consisting of 3/16" square base, male conical prism placed parallel and perpendicular to the length and width of the panel.
- * Suggested for use in commercial applications requiring high efficiency combined with high angle brightness control.
- * Material options include .187 thickness, radio frequency interference (RFI) and silver tint colors.

PROFILE



Panel sizes and thicknesses shown are stock items.
Other thicknesses, sheet sizes and colors are available. Please call for a quotation.

/ K23 Prismatic Sheet /

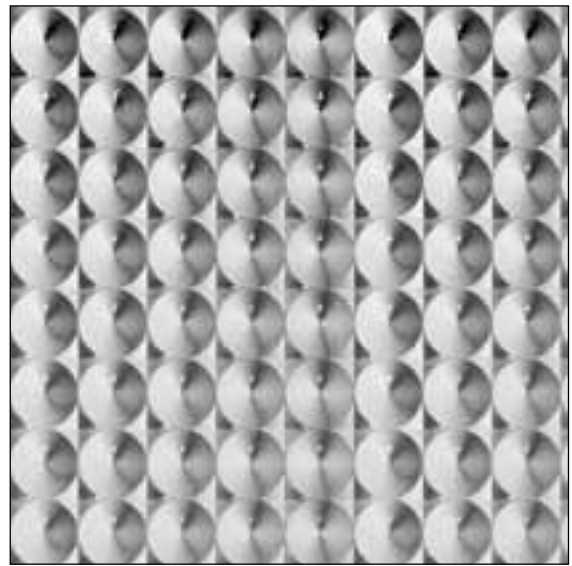
PART #	DESCRIPTION	COLOR	SIZE
K23-100-14	.100 Acrylic	Clear	11 3/4" x 47 3/4"
K23-100-22	.100 Acrylic	Clear	23 3/4" x 23 3/4"
K23-100-24	.100 Acrylic	Clear	23 3/4" x 47 3/4"

K23UVBWF-100-24	.100 Acrylic	Amber	23 3/4" x 47 3/4"

Also available in .125 thickness. (Substitute “.125” in place of “.100”.)

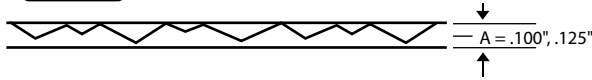
Product Description:

- * Female conical prisms with 3/8" circular base parallel to the sides of the diffuser.
- * Truss shaped prism design means no sagging lenses.
- * Constructed in either .100 or .125 thickness.
- * Available in gold tint specially formulated to eliminate ultraviolet and blue wave length transmission up to approximately 480 nanometers. Applications include graphic arts, printed circuit and plating companies.
- * MINIMUM QUANTITY NEEDED TO ORDER. CALL FOR QUOTE.

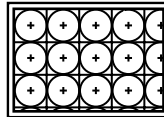


K23 PRISMATIC SHEET

PROFILE



DESIGN



/ Plexiglass Sheet / Acrylic / Polycarbonate /

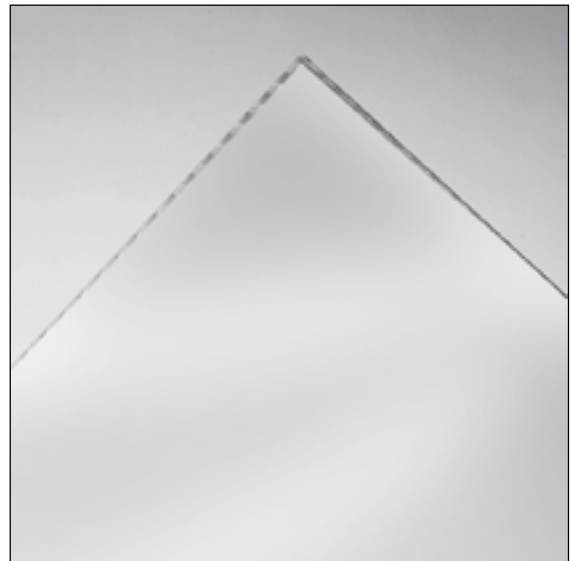
PART #	DESCRIPTION	COLOR	SIZE
2447-1/8-4896	.125 Acrylic	White	54" x 108"
2447-3/16-4896	.187 Acrylic	White	48" x 96"
2447-1/4-4896	.250 Acrylic	White	48" x 96"

CA-1/8-4896	.125 Acrylic	Clear	51" x 100"
CA-3/16-4896	.187 Acrylic	Clear	48" x 96"
CA-1/4-4896	.250 Acrylic	Clear	48" x 96"

CP-1/8-4896	.125 Polycarbonate	Clear	48" x 96"
CP-3/16-4896	.187 Polycarbonate	Clear	48" x 96"
CP-1/4-4896	.250 Polycarbonate	Clear	48" x 96"

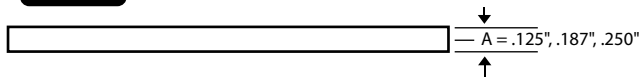
Product Description:

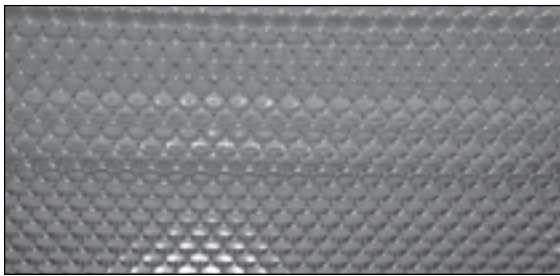
- * Translucent panels offer excellent light dispersion
- * Available in 100% acrylic and polycarbonate
- * Available in large sheet sizes to accommodate large openings and other special requirements.
- * Clear panels offer window clear visibility, making this material ideal for display cases or protective enclosures.



PLEXIGLASS SHEET

PROFILE





HOLOPHANE® CONTROL LENS

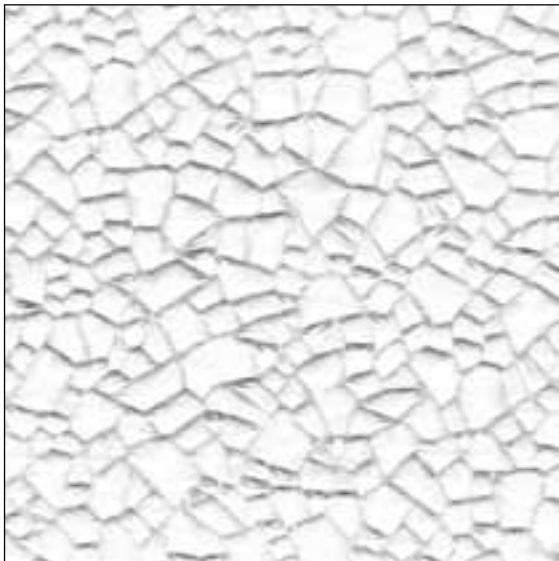
/ Holophane® Control Lens /

PART #	DESCRIPTION	COLOR	SIZES
HOL-8224	.240 Acrylic	Clear	23 3/4 x 47 3/4
HOL-8246	.280 Acrylic with overlay	Clear/White	23 3/4 x 47 3/4
HOL-8248	.280 Acrylic with overlay	Clear	23 3/4 x 47 3/4

Product Description:

- * The patented Refractive Grid uses a refracting hemispherical prism and technology similar to the light piping of fiber optics to intercept and return high angle light back into the fixture for another chance to get out as useful light. Output in the 0-70° zone is higher than any other optical control device. Glare is reduced by up to 80%.
- * Suggested for use in offices, computer rooms, classrooms, hospitals, nursing homes, stores, and retrofit installations.
- * Available with a radio frequency shielding grid or UV blocking interface.

PROFILE



PS100 CRACKED ICE

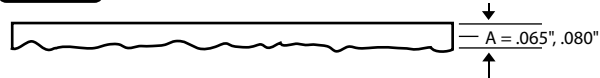
/ Cracked Ice /

PART #	DESCRIPTION	COLOR	MAX CUT SIZE
PS100-24-C	.080 Acrylic	Clear	23 3/4" x 47 3/4"
PS100-24-W	.080 Acrylic	White	23 3/4" x 47 3/4"
PS100-24-WS	.065 Styrene	White	23 3/4" x 47 3/4"

Product Description:

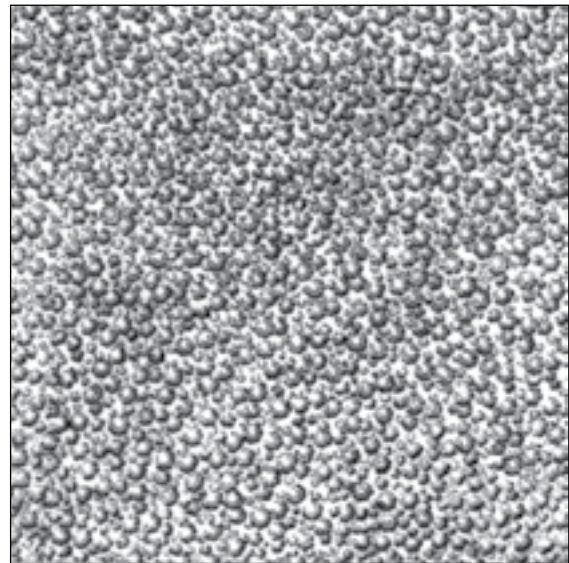
- * Cracked ice pattern has male ice-like chips of various shapes and sizes.
- * Offers sparkle and brilliance while providing excellent lamp obscuration.
- * Applications include luminous ceilings, valences and residential areas.
- * Available in clear and white.

PROFILE



/ Smooth/Stipple /

PART #	DESCRIPTION	COLOR	STANDARD SIZE
S821W-020-44X	.020 Acrylic	White	50" x 50"
PS81-040-14	.040 Acrylic	White	11 3/4" x 47 3/4"
PS81-040-22	.040 Acrylic	White	23 3/4" x 23 3/4"
PS81-040-24	.040 Acrylic	White	23 3/4" x 47 3/4"
PS81-C-040-14	.040 Acrylic	Clear	11 3/4" x 47 3/4"
PS81-C-040-22	.040 Acrylic	Clear	23 3/4" x 47 3/4"
PS81-C-040-24	.040 Acrylic	Clear	23 3/4" x 47 3/4"
PS81-060-14	.060 Acrylic	White	11 3/4" x 47 3/4"
PS81-060-22	.060 Acrylic	White	23 3/4" x 23 3/4"
PS81-060-24	.060 Acrylic	White	23 3/4" x 47 3/4"
PS81-060-44X	.060 Acrylic	White	50" x 50"
PS81-080-14	.080 Acrylic	White	11 3/4" x 47 3/4"
PS81-080-22	.080 Acrylic	White	23 3/4" x 23 3/4"
PS81-080-24	.080 Acrylic	White	23 3/4" x 47 3/4"
PS81-080-44X	.080 Acrylic	White	50" x 55"
PS81-125-14	.125 Acrylic	White	11 3/4" x 47 3/4"
PS81-125-22	.125 Acrylic	White	23 3/4" x 23 3/4"
PS81-125-24	.125 Acrylic	White	23 3/4" x 47 3/4"
PS81-C-125-28	.125 Acrylic	Clear	27 x 103

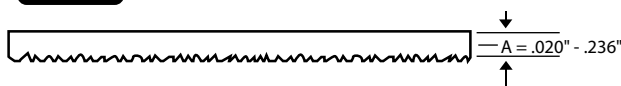


PS81 SMOOTH/STIPPLE

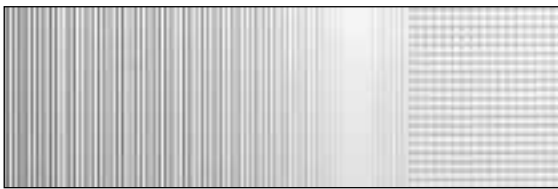
Product Description:

- * Panels consist of a smooth reflective side and a textured side, providing a fine mechanical finish with excellent hiding power.
- * Applications include overlay panels, luminous ceilings, residential and commercial applications.
- * Hi-Impact and polycarbonate materials are available.
- * A variety of thicknesses from .020 to .236 are available to meet your requirements.

PROFILE



Remember...
 Most light fixtures require the lens to be cut to size to fit into the door frame. Just specify the existing lens size, or tell us the fixture make and model number and we'll cut to fit.
 Non-standard sizes are available.
 Give us a call for a quote!



KSH3® SPECIALTY LENS

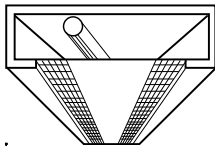
/ KSH3® Specialty Lens /

PART #	DESCRIPTION	COLOR	STANDARD SIZE
KSH3-AF-14-STD	Acrylic	Clear	11 3/4" x 47 3/4"

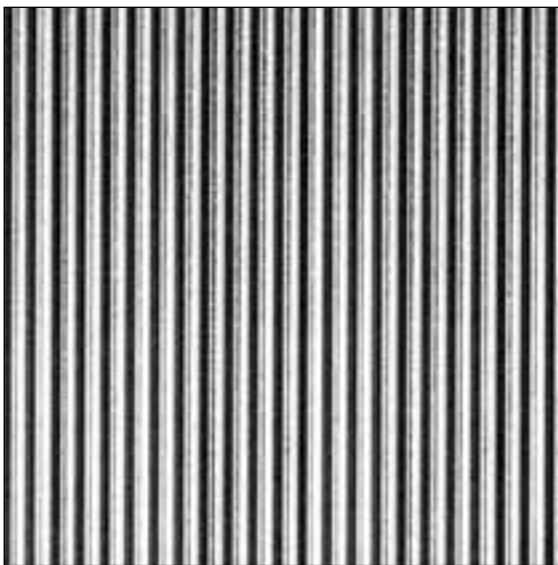
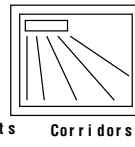
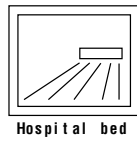
Product Description:

- * Provides asymmetric light distribution.
- * Available in 1 x 4 panel sizes.
- * Ideal for small offices, hospital bed lights, blackboard/white board lighting in classrooms, boardrooms and corridor lighting from the perimeter.
- * Will perform satisfactorily for 20 years under normal interior conditions.

PROFILE



EXAMPLES



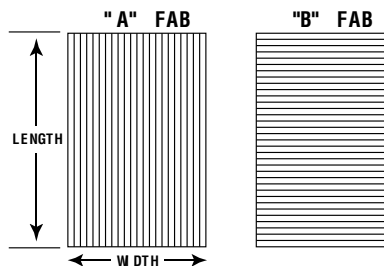
KSH25® SPECIALTY LENS

/ KSH25® Specialty Lens /

PART #	DESCRIPTION	COLOR	STANDARD SIZE
K25-100-24A	.115 Acrylic A-Fab	Clear	23 3/4" x 47 3/4"
K25-100-24B	.115 Acrylic B-Fab	Clear	23 3/4" x 47 3/4"
K25-100-44A	.115 Acrylic A-Fab	Clear	47 3/4" x 47 3/4"
K25-100-44B	.115 Acrylic B-Fab	Clear	47 3/4" x 47 3/4"

Product Description:

- * Linear ribbed lenses with a 90 ° angle on 1/8" centers.
- * Panels are furnished with ribs running parallel to the lamp axis ("B" Fab).
- * Applications include areas where broad distribution is required and direct glare is not a problem ("A" Fab), task lighting and under the counter applications ("B" Fab).

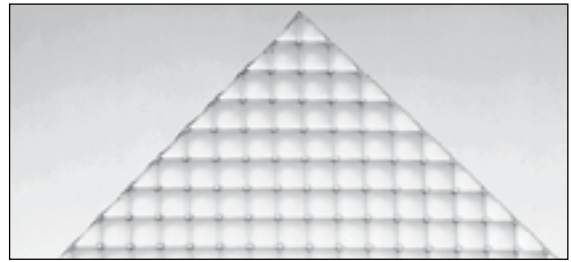


/ U.V. Uvalite Filtering Lens /

PART #	DESCRIPTION	COLOR	STANDARD SIZE
PS21-U-125-14	.125 U.V. Acrylic	Clear	11 3/4" x 47 3/4"
PS21-U-125-22	.125 U.V. Acrylic	Clear	23 3/4" x 23 3/4"
PS21-U-125-24	.125 U.V. Acrylic	Clear	23 3/4" x 47 3/4"

Product Description:

- * Panels are manufactured from special grades of ultra violet filtering acrylic, filtering the most damaging wavelengths between 300-400 nanometers.
- * Applications include libraries, museums and areas where U.V. filtering is required without changing the color or photo metric performance of a pattern #12 lens.



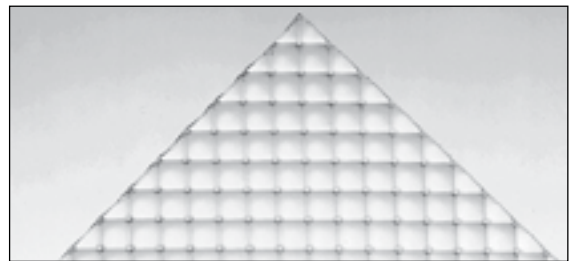
KSH-12 UVALITE

/ RFI (Radio Frequency Interference) /

PART #	DESCRIPTION	COLOR	STANDARD SIZE
PS21-RFI-125-14	.125 RFI Acrylic	Clear	11 3/4" x 47 3/4"
PS21-RFI-125-22	.125 RFI Acrylic	Clear	23 3/4" x 23 3/4"
PS21-RFI-125-24	.125 RFI Acrylic	Clear	23 3/4" x 47 3/4"

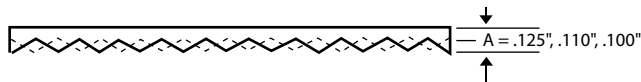
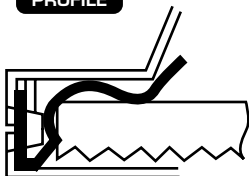
Product Description:

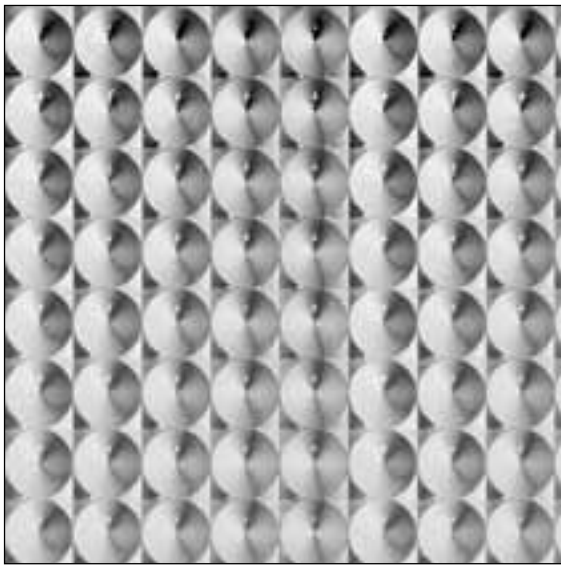
- * This lens has a square grid of metallic links and grounding buss of 70% silver across the back of the lens, suppressing RFI emissions from fluorescent lamps.
- * Applications include sensitive medical devices, radars, computer systems, etc.



PS21 RFI RADIO FREQUENCY INTERFERENCE

PROFILE





**K23 UVBWF
PRISMATIC SHEET**

/ UVBWF Prismatic Sheet /

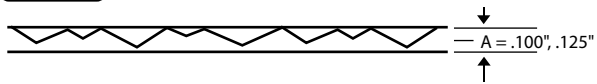
PART #	DESCRIPTION	COLOR	SIZE
K23UVBWF-100-24	.100 Acrylic	Amber	23 3/4" x 47 3/4"

Also available in .125 thickness. (Substitute ".125" in place of ".100".)

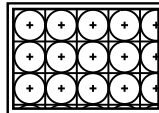
Product Description:

- * Female conical prisms with 3/8" circular base parallel to the sides of the diffuser.
- * Truss shaped prism design means no sagging lenses.
- * Constructed in either .100 and .125 thickness.
- * Available in gold tint specially formulated to eliminate ultraviolet and blue wave length transmission up to approximately 480 nanometers. Applications include graphic arts, printed circuit and plating companies.

PROFILE



DESIGN



*Minimum quantities and/or set up charges may apply. Please call for a quotation.

U.V. Filtering Sleeves

Our Safelight Systems provide the greatest illumination combined with the best protection for your film, paper proofing and plate making materials. Every product has been tested by outside laboratories and cut-off figures are accurate, ensuring you a safe working environment.

- * Construction is solid one-piece polycarbonate material with the Safelight filtering pigments impregnated directly into the sleeve itself.
- * You will find NO LITH wrapped on our sleeves to fade, crack or peel.
- * End caps slip on easily and there are no tools necessary to install your new Fluorescent Safelight System.
- * A reference chart is provided to assist in selecting an appropriate Safelight for each application. Please specify Catalog Reference Code and length when ordering.

QUALITY

Proudly manufactured in the USA.

We offer a complete line of Fluorescent Safelights made of solid polycarbonate. These sleeves have been tested by outside laboratories and must pass strict standards before they reach you. No peeling. No cracking. No fading. Solid one-piece polycarbonate construction assures total protection. Our factory guarantees this for 10 years!

PERFORMANCE

Our Safelights give you the brightness you desire and the safety you must have at a substantial savings. Enough brightness to allow you to easily read fine print in your darkroom environment. You will experience 30% to 80% increase illumination over your existing Safelight System, while maintaining total protection. The unique construction eliminates the need for frequent replacement of the Safelight filters as is common with other Safelights. Test your film under our products. No latent images or fogging occurs for an exposure time of 3 to 10 minutes at a six foot distance.*

*Testing our standard Red Safelights on orthochromatic film. Very last film should be used when under Super Red Safelight. It was designed and developed specifically for emulsion speeds up to four times that of the most commonly used orthochromatic emulsion.

APPLICATIONS

Whether your needs are in the darkroom, plate making area, daylight contact, laser film, x-ray, photo resist or screen printing area, we have a specific product to fill your requirements. Please refer to the enclosed chart to match your specific application to the correct Safelight.

DURABILITY

Our Safelight sleeves are constructed of unbreakable polycarbonate, with the light filtering properties impregnated right into the material itself.

VALUE

A four foot fluorescent Safelight gives you a life of up to 20,000 hours, almost twenty times that of standard incandescent Safelights. Additionally, our Safelights will flood your darkroom with light instead of spotlighting one small working area as is typical with standard incandescents. Frequent bulb replacements are eliminated cutting both bulb cost and labor costs for installation. Our product fits into any standard fluorescent fixture. Complete Safelight fixtures are available.

RETURN ON INVESTMENT

Not something that usually comes to mind when you think of an item such as a Safelight. However, the cost savings can be turned into an increased profit with lowered overhead by considering:

- * Unit cost
- * Extended life
- * The use of cool white or energy saving white fluorescents
- * Reduced labor costs involved with frequent bulb replacement
- * 10 year guarantee
- * Will not fog film, cutting down on cost of materials

Be assured that we will continue to provide the most reliable, cost-efficient fluorescent Safelight products you can buy.

ULTRA WHITE

- * Blockage of UV and Violet rays of T8 and T12 bulbs from 0 - 417 nanometers while still offering pure white light.
- * Other common UV blocking sleeves eliminate at best to 395 nanometers but most commonly 365 nanometers.
- * APPLICATIONS: Daylight films, museums, archives, glare in offices, lupus patients, and many other applications of radiation control.

***lamp type not to exceed 3,000 kelvin rating

SUPER RED

- * Elimination of UV, Violet, Blue, and Green rays from 0 - 630 nanometers.
- * APPLICATIONS: Graphic arts, printing, screen printing, and x-ray markets. Used for all types of blue and green sensitive film.

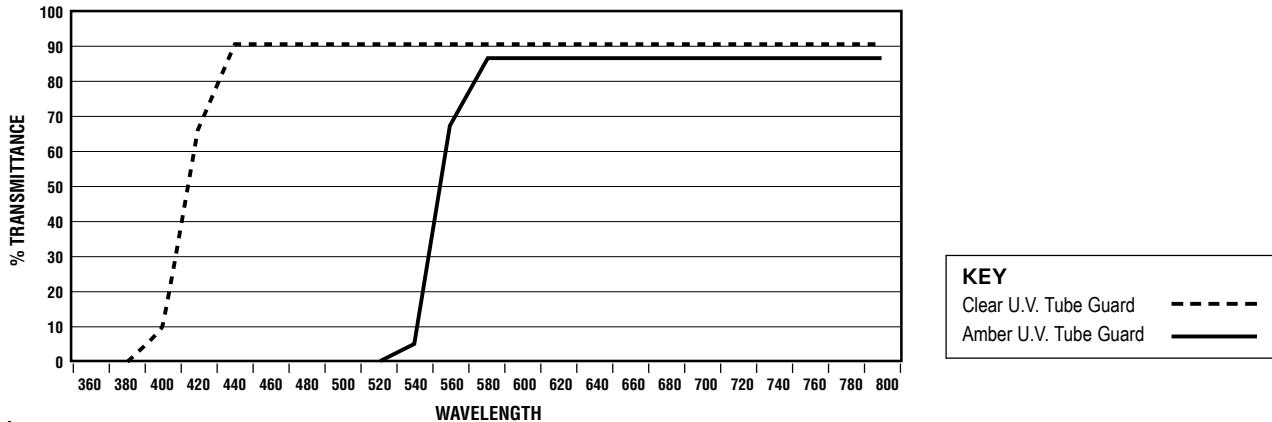
LITHO GOLD

- * Elimination of UV, Violet, and Blue rays from 0 - 525 nanometers.
 - * APPLICATIONS: Printing plates, screen printing, bright light film, bug lights, pharmaceutical, dairy, produce, poultry, fruit and vegetables as well as archives.
 - * This filter completely eliminates photosynthesis.
- ***lamp type not to exceed 3,000 kelvin rating

ULTRA VIOLET FILTERING TUBEGUARDS

PROPERTY	PROPERTIES	ACRYLIC	POLYCARBONATE	ASTM TEST METHOD
General	Length: 48" / 96" Outside Wall diameter Average Life (8 hour day)	0.040" 7 years	0.040" 7 years	
Optical	Transmittance Haze Refractive Index	88% 1% 1.586	88% 1% 1.586	D1003 D1003 D542
Mechanical	Tensile Stress Break Impact Strength (.125" thickness, 73 °F)	5,510 lbs. In. Sq. 1.11 ft-lb	10,500 lbs. In. Sq. 17 ft-lb	D638 D256
Thermal	Relative Temp Index Electrical Vicat Softening Temp Rate A	125 °C 270 °F	125 °C 315 °F	UL746B D1525
Flamability	U194 Flame Class 0.12" Thickness Clear U.V. Tube Guard	V-2 rating Amber U.V. Tube Guard	V-0 rating	U1194

U.V. FILTERING TUBEGUARD PROPERTIES



These products offer varying degrees of ultra-violet filtering and blockage.

CLEAR GENERAL PURPOSE U.V. FILTERING SLEEVES

Product Description:

- * Applications include museums, libraries and archive protection.
- * These products eliminate U.V rays from 0-365 nanometers.

/ Clear general purpose U.V. filtering sleeves /

PART #	DESCRIPTION	TUBE LENGTH	COLOR	CASE QTY.
T5-40-UV	T5-28W	45 1/8"	Clear	125
T8-32-UV	F32	46 7/16"	Clear	24
T8-96-UV	F96	92 7/16"	Clear	24
FG-40-UV	F40	46 1/4"	Clear	24
FG-96-UV	F96	92 1/4"	Clear	24

SUPER RED U.V. FILTERING SLEEVES

Product Description:

- * Applications: Dark room applications, graphic arts, printing, x-ray markets. Used for all types of blue and green sensitive film.
- * Elimination of U.V., violet, blue and green rays from 0-630 nanometers.

/ Super Red U.V. filtering sleeves /

PART #	DESCRIPTION	TUBE LENGTH	COLOR	CASE QTY.
T8-32-R10	F32	46 7/16"	Super Red	24
T8-96-R10	F96	92 7/16"	Super Red	24
FG-40-R10	F40	46 1/4"	Super Red	24
FG-96-R10	F96	92 1/4"	Super Red	24

LITHO GOLD U.V. FILTERING SLEEVES

Product Description:

- * Applications: Printing plates, screen-printing, printed circuits, bright light film, dairy, produce and poultry product displays.
- * Elimination of U.V., violet and blue rays from 0-525 nanometers.
- * This filter completely eliminates photosynthesis.

/ Litho Gold U.V. filtering sleeves /

PART #	DESCRIPTION	TUBE LENGTH	COLOR	CASE QTY.
T5-40-G10	T5-28W	45 1/8"	Litho Gold	125
T8-32-G10	F32	46 7/16"	Litho Gold	24
T8-96-G10	F96	92 7/16"	Litho Gold	24
FG-40-G10	F40	46 1/4"	Litho Gold	24
FG-96-G10	F96	92 1/4"	Litho Gold	24

ULTRA WHITE U.V. FILTERING SLEEVES

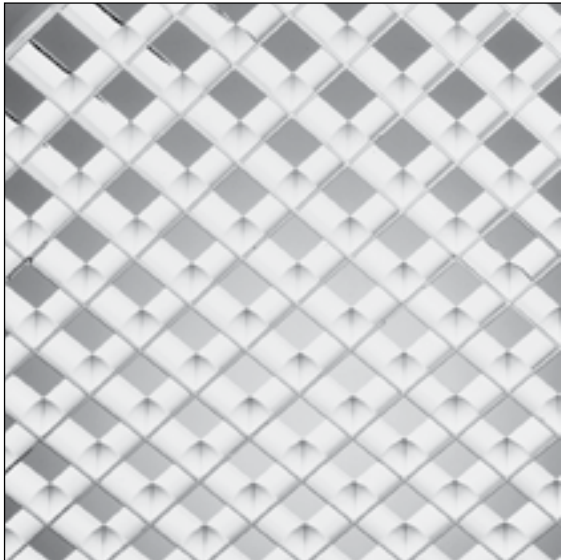
Product Description:

- * Applications: Daylight films, museums, archives, lupus patients and any applications where U.V. blockage is desired while maintaining a white light.
- * Other common U.V. blocking sleeves eliminate generally 365 nanometers.
- * Blockage of U.V. and violet rays of T8 & T12 bulbs from 0-417 nanometers, while still offering white light.

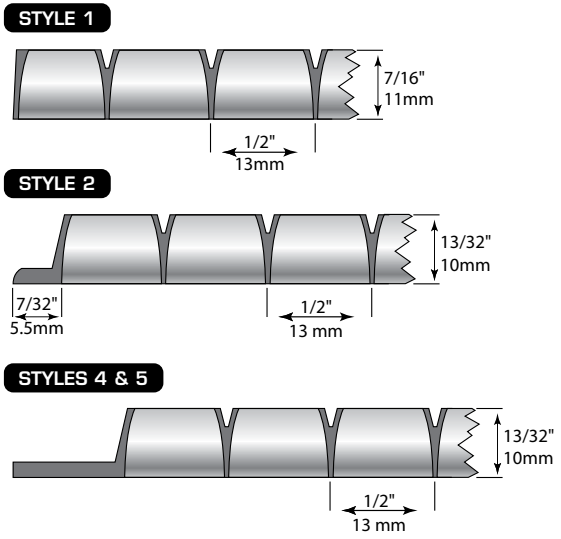
/ Ultra White U.V. filtering sleeves /

PART #	DESCRIPTION	TUBE LENGTH	COLOR	CASE QTY.
T8-32-W10	F32	46 7/16"	Ultra White	24
T8-96-W10	F96	92 7/16"	Ultra White	24
FG-40-W10	F40	46 1/4"	Ultra White	24
FG-96-W10	F96	92 1/4"	Ultra White	24

Plastic Parabolic Louvers



**P1 PARABOLIC LOUVER
(1/2" CELL)**



Visual Comfort Probability			52%	Cat. 1 42°
CEILING HEIGHT	MEAN	MODE		
8.5' (2.6M)	100	100	48°	
10' (3M)	100	100		

/ Style 1 & 2: Grid/Soffit Applications /

PART #	BODY SIZE	GRID / SOFFIT APPLICATIONS
P1-24-1	---	23 3/4" x 47 3/4"
P1-22-1	---	23 3/4" x 23 3/4"
P1-14-1	---	11 3/4" x 47 3/4"

P1-24-2	23 11/16" x 47 3/4"	23 3/4" x 47 3/4"
P1-22-2	23 11/16" x 23 3/4"	23 3/4" x 23 3/4"
P1-14-2	11 3/4" x 47 3/4"	11 3/4" x 47 3/4"

/ Style 2: Fixture Application /

PART	BODY SIZE	MAX TRIM SIZE
P1-24-4	20 15/16" x 44 15/16"	22 3/4" x 46 3/4"
P1-22-4	20 15/16" x 20 15/16"	22 3/4" x 22 3/4"

/ Styles 4 & 5: Air Handling Application /

PART	BODY SIZE	MAX TRIM SIZE
P1-24-5	19 5/8" x 43 7/8"	22 3/4" x 46 3/4"

The P1 part numbers are designated in styrene with a Specular Silver finish.

- FINISHES**
- Specular **G**old
 - Semi-Specular Silver
 - Black Styrene
 - White Acrylic

* *Please add **bold** letter to end of part #. Example: P1-24-1**G** (**Gold**)

Product Description:

- * Industry standard, small cell, injection molded plastic parabolic louver.
- * 1/2" cells provide luminance that conform to major standards.
- * P1 louvers are manufactured in many configurations to meet all your application needs. Panels can be manufactured for larger than standard openings.
- * Four body sizes to choose from:
 - Style 1 has no flange.
 - Style 2 has a lap style flange on the ends that allows for continuous row applications.
 - Styles 4 and 5 have a flange that gets progressively larger.
- * Available in polystyrene. Acrylic may be available by special order.

/ Style 1: Grid/Soffit Applications /

PART #	BODY SIZE	GRID/SOFFIT APPLICATIONS
P2-24-1	---	23 3/4" x 47 3/4"
P2-22-1	---	23 3/4" x 23 3/4"
P2-14-1	---	11 3/4" x 47 3/4"

/ Style 4: Fixture Application /

PART #	BODY SIZE	MAX TRIM SIZE
P2-24-4	20 3/8" x 44 3/8"	22 3/4" x 46 3/4"
P2-22-4	22 3/4" x 20 3/8"	22 3/4" x 22 3/4"
P2-14-4	9 1/4" x 45 1/4"	11 1/2" x 47 1/2"

/ Style 5: Air Handling Application /

PART #	BODY SIZE	MAX TRIM SIZE
P2-24-5	19 1/8" x 43 5/16"	22 3/4" x 46 3/4"

The P2 part numbers are designated in styrene with a Specular Silver finish.

Finishes:

- Specular **G**old
- Semi-Specular Silver
- **B**lack Styrene
- **W**hite Acrylic

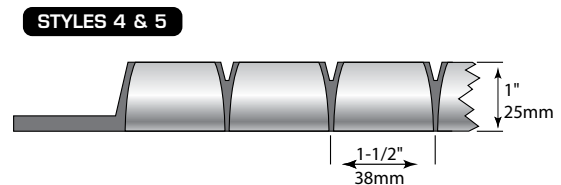
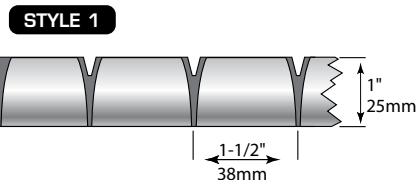
Please add **bold letter to end of part #. Example: P2-24-1**B** (**Black**)

Product Description:

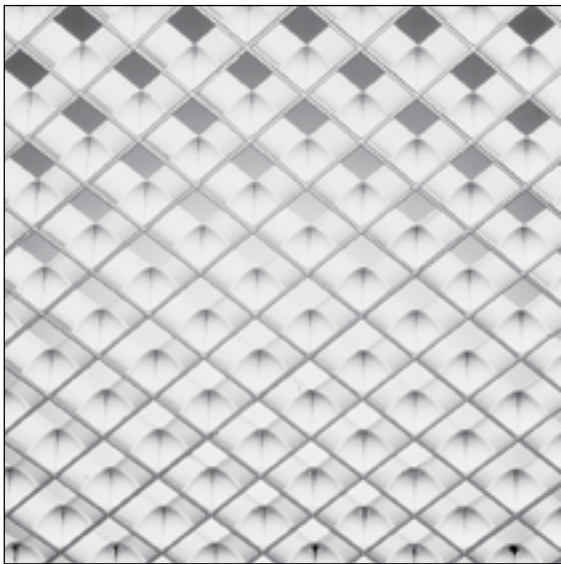
- * 1 1/2" x 1 1/2" x 1" deep injection molded plastic parabolic louver.
- * Meets the demands of both efficiency and luminance control.
- * Molded in a number of panel configurations. P2 flange louvers for fixture applications. P2 non-flange louvers for grid, continuous row and non-standard sizes.



P2 PARABOLIC LOUVER (1 1/2" CELL)



Visual Comfort Probability			64%	Cat. 2 38°
CEILING HEIGHT	MEAN	MODE		
8.5' (2.6M)	98	99		
10' (3M)	99	99		



**P3 PARABOLIC LOUVER
(3/4" CELL)**

/ Style 1: Grid/Soffit Applications /

PART #	BODY SIZE	GRID/SOFFIT APPLICATIONS
P3-24-1	---	23 3/4" x 47 3/4"
P3-22-1	---	23 3/4" x 23 3/4"
P3-14-1	---	11 3/4" x 47 3/4"

/ Style 4: Fixture Application /

PART #	BODY SIZE	MAX TRIM SIZE
P3-24-4X	20 7/16" x 44 7/16"	22 9/16" x 47 9/16"
P3-22-4	20 7/16" x 20 7/16"	22 9/16" x 22 9/16"

/ Style 5: Air Handling Application /

PART #	BODY SIZE	MAX TRIM SIZE
P3-24-5	19 11/16" x 45 13/16"	21 11/16" x 45 13/16"
P3-22-5	19 11/16" x 19 11/16"	21 11/16" x 21 13/16"

The P3 part numbers are designated in styrene with a Specular Silver finish.

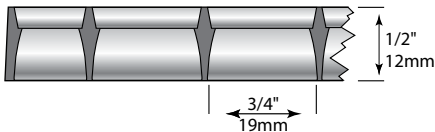
- FINISHES**
- Specular **G**old
 - **S**emi-Specular Silver
 - **B**lack Styrene
 - **W**hite Acrylic

Please add **bold letter to end of part #. Example: P3-24-1**B** (Black)

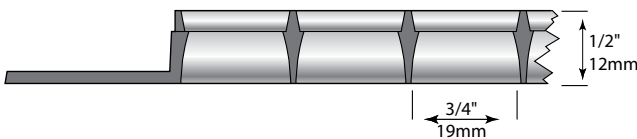
Product Description:

- ✱ 3/4" x 3/4" x 1/2" cell size provide 35 degree shielding and maintains energy saving efficiencies.
- ✱ High efficiency wedge back design.
- ✱ Molded in three configurations to meet a variety of applications.

STYLE 1



STYLES 4 & 5



Visual Comfort Probability		
CEILING HEIGHT	MEAN	MODE
8.5' (2.6M)	95	97
10' (3M)	91	93

78%

55°

Cat. 2

35°

/ Style 1: Grid/Soffit Applications /

PART #	BODY SIZE	MAX TRIM SIZE
P5-24-1	---	3 3/4" x 47 3/4"
P5-22-1	---	23 3/4" x 23 3/4"
P5-14-1	---	11 3/4" x 47 3/4"

/ Style 4: Fixture Application /

PART #	BODY SIZE	MAX TRIM SIZE
P5-24-4	20 7/16" x 44 7/16"	22 9/16" x 46 9/16"
P5-22-4	20 7/16" x 20 7/16"	22 9/16" x 22 9/16"

/ Style 5: Air Handling Application /

PART #	BODY SIZE	MAX TRIM SIZE
P5-24-5	19 11/16" x 43 11/16"	21 11/16" x 45 13/16"
P5-22-5	19 11/16" x 19 11/16"	21 11/16" x 21 13/16"

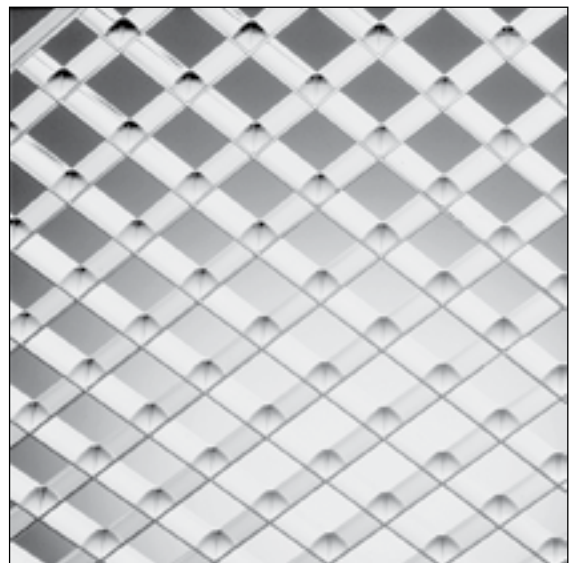
The P5 part numbers are designated in styrene with a Specular Silver finish.

FINISHES

- Specular **G**old
- **B**lack Styrene

- **S**emi-Specular Silver

Please add **bold letter to end of part #. Example: P5-24-1**B** (**Black**)

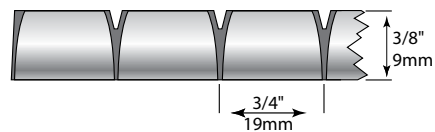


**P5 PARABOLIC LOUVER
(3/4" CELL)**

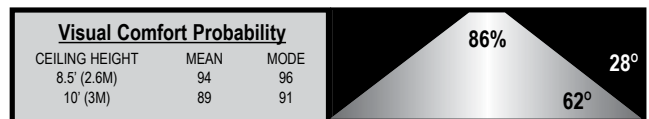
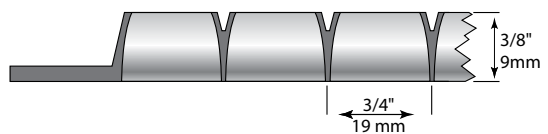
Product Description:

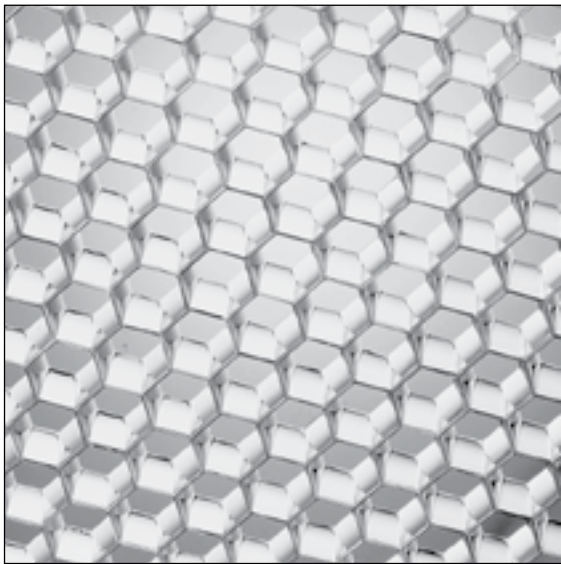
- * The P5 part numbers are designated in styrene with Specular Silver finish.
- * 3/4" x 3/4" x 3/8" low brightness louver.
- * Economical flat back design is ideal when energy budgeting is critical.
- * 3/8" depth provides for easy installation in door frames.

STYLE 1



STYLES 4 & 5





P6 PARABOLIC LOUVER

/ P6 Parahex Louver /

PART #	STANDARD SIZE
P6-24-1	23 3/4" x 47 3/4"
P6-22-1	23 3/4" x 23 3/4"
P6-14-1	11 3/4" x 47 3/4"

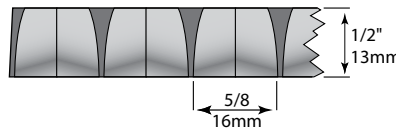
The P6 part numbers are designated in styrene with a Specular Silver finish.

FINISHES	• Specular Gold	• Semi-Specular Silver
	• Black Styrene	• White Acrylic

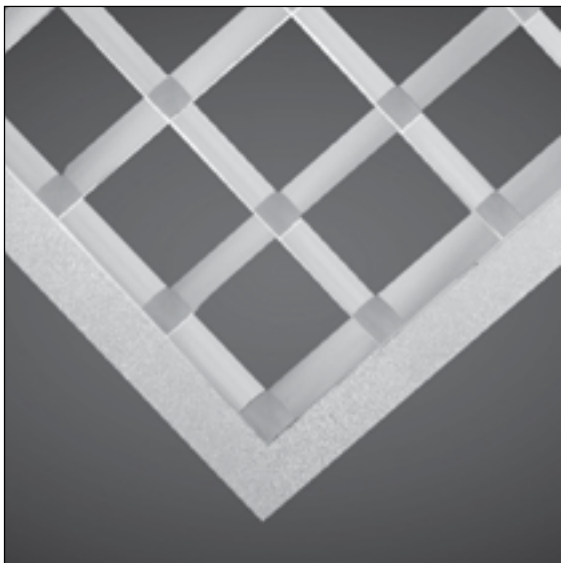
***Please add **bold** letter to end of part #. Example: P5-24-1**B** (Black)*

Product Description:

- * Hexagonal cells provide the highest degree of sheilding from a small cell louver.
- * Parahex louvers provide a decorative alternative to square cell louvers.



Visual Comfort Probability			51%	Cat. 1 45°
CEILING HEIGHT	MEAN	MODE		
8.5' (2.6M)	100	100	45°	
10' (3M)	100	100		



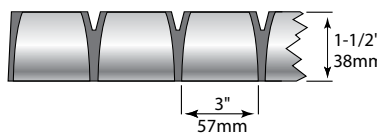
PC33 PARABOLIC LOUVER

/ PC33 Parabolic Louver /

PART #	BODY SIZE	MAX TRIM SIZE
PC33-24-1	---	23 3/4" x 47 3/4"
PC33-24-4	20 5/8" x 44 5/8"	22 1/2" x 46 1/2"
PC33-22-4	20 5/8" x 20 5/8"	22 1/2" x 22 1/2"
PC33-14-4	8 9/16" x 44 5/8"	10 13/16" x 46 1/2"

Product Description:

- * 3" x 3" x 1 1/2" deep cells offer the largest opening in plastic louvers.
- * PC33 series louvers are ideal in high ceiling applications, areas with greater spacing between fixtures, corridors and retail areas.
- * Sloped side walls and large perimeter flanges insure compatibility with most fixtures.
- * Manufactured in polystyrene and acrylic. Optional finishes include gold, black and white.



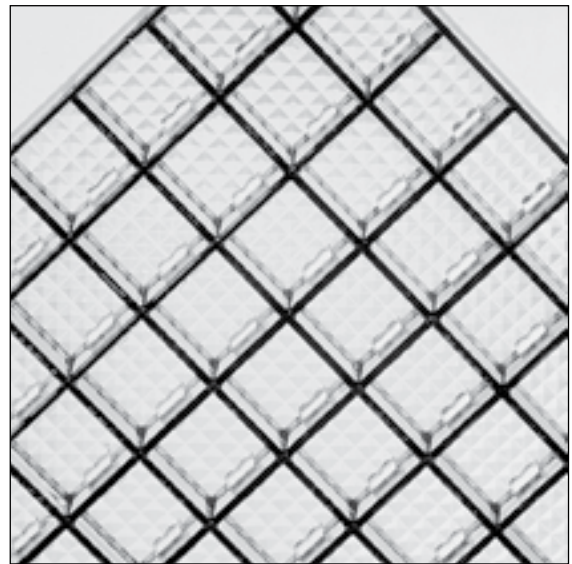
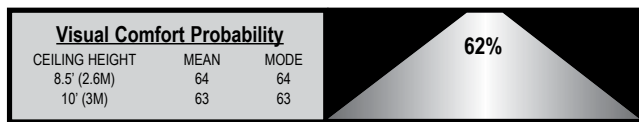
/ Acrylic Standard Sizes /

PART #	DESCRIPTION/COLOR	STANDARD SIZE
LAC-245	Clear Acrylic	23 3/4" x 47 3/4"
LAC-225	Clear Acrylic	23 3/4" x 23 3/4"
LAC-145	Clear Acrylic	11 3/4" x 47 3/4"

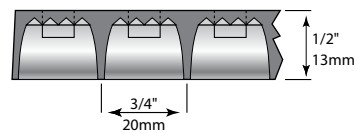
LAC-245-BA	Clear w/Black Accent	23 3/4" x 47 3/4"
LAC-225-BA	Clear w/Black Accent	23 3/4" x 23 3/4"
LAC-145-BA	Clear w/ Black Accent	11 3/4" x 47 3/4"

Product Description:

- * One piece injection molded prism lens combined with 3/4" cells.
- * Louver Lens™ offers complete lamp concealment combined with air handling function in one panel.
- * Excellent for high maintenance applications requiring cleaning.
- * Available in clear or black accent cell pattern, in acrylic or styrene.
- * Acrylic version is great for elevator applications



LOUVER LENS



/ Angleflux Standard Sizes /

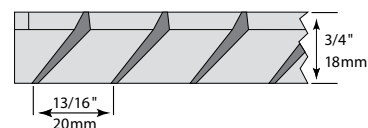
PART #	DESCRIPTION/COLOR	STANDARD SIZE
AF-14	Silver	11 3/4" x 47 3/4"
AF-22	Silver	23 3/4" x 23 3/4"
AF-24	Silver	23 3/4" x 47 3/4"

Product Description:

- * Most sophisticated injection molded directional louver available.
- * Designed for those special applications that require highly restricted distribution in one direction, the majority of distribution in the opposite direction and 45 degree cut-off in the perpendicular plane.
- * By combining angled and parabolic blades, Angleflux can provide the highest levels of efficiency and lighting control.

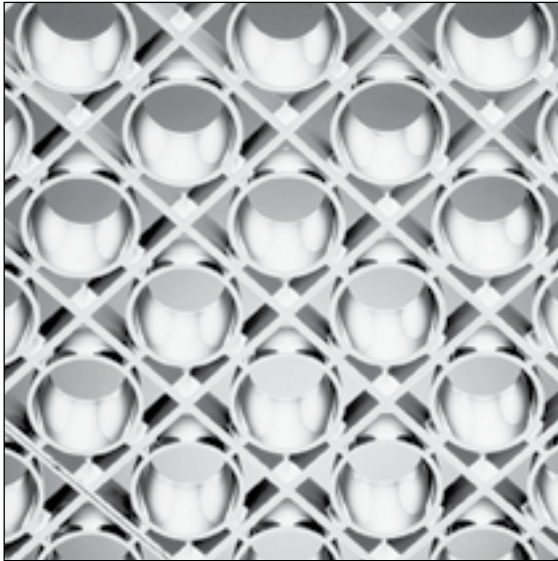


ANGLEFLUX DIRECTIONAL LOUVER



Plastic Decorative Louvers

These louvers have been primarily designed as decorative ceiling panels. Although not specifically designed as light control devices, they do share many of the same characteristics as plastic parabolic louvers. Each offers shielding of the luminaire cavity and may offer some degree of light control distribution. Decorative Louvers are particularly suited for public areas such as lobbies and within the hospitality industry.



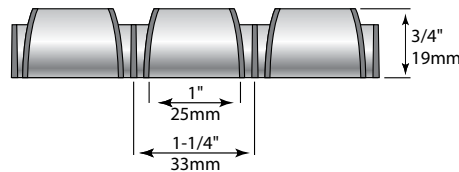
DECORONA 33™ LOUVER

/ Decorona 33 Standard Sizes - Specular Silver /

PART #	SIZE
D33-22	23 5/8" x 23 5/8"
D33-24	47 1/4" x 47 5/8"

Product Description:

- * Decorona™ 33 offers the original "circle within a square motif" that has been copied but never equaled. This marriage of geometric forms produces a pleasing array of contrasting luminances and surfaces. The parabolic cone's completely uniform low brightness cut-off is set off by the square cell's slightly elevated reflections. This European-designed, metric size product is now manufactured in North America for the world market.



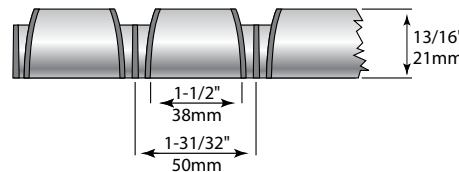
DECORONA 50™ LOUVER

/ Decorona 50 Standard Sizes - Specular Silver /

PART #	SIZE
D50-22	23 5/8" x 23 5/8"
D50-24	47 1/4" x 47 5/8"

Product Description:

- * Decorona™ 50 carries the same classic motif as Decorona 33, but on a scale more suited for decorative ceilings and large luminaire applications. The melding of geometric forms and the complementing brightness offer a more hospitable environment than square cell, low brightness louvers. Decorona™ 50 reaches its potential in people and entertainment-oriented areas.



Custom Sizes Available! Call with your requirements.

Plastic Eggcrate

/TC Eggcrate Standard Sizes /

PART #	COLOR	MATERIAL	SIZE
TC-245	White	Styrene	23 3/4" x 47 3/4"
TC-225	White	Styrene	23 3/4" x 23 3/4"
TC-145	White	Styrene	11 3/4" x 47 3/4"

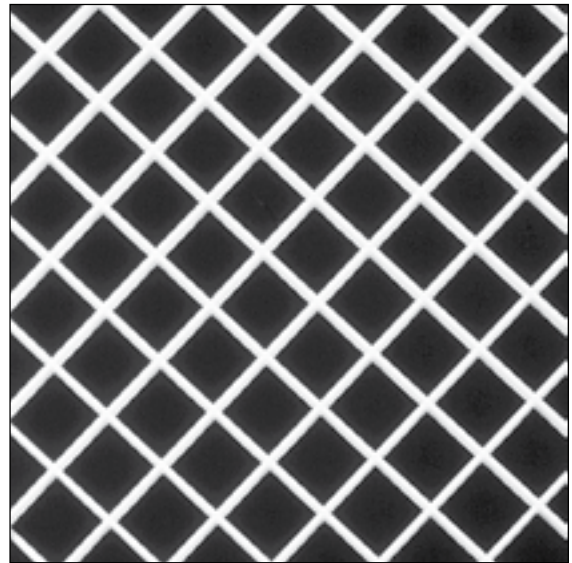
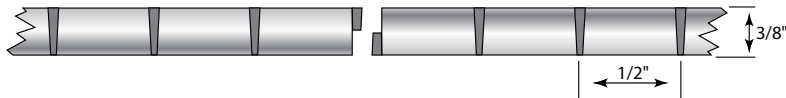
TC-245-B	Black	Styrene	23 3/4" x 47 3/4"
TC-225-B	Black	Styrene	23 3/4" x 23 3/4"
TC-145-B	Black	Styrene	11 3/4" x 47 3/4"

TC-245-CH	Specular Silver	Styrene	23 3/4" x 47 3/4"
TC-225-CH	Specular Silver	Styrene	23 3/4" x 23 3/4"
TC-145-CH	Specular Silver	Styrene	11 3/4" x 47 3/4"

TC-245-A	White	Acrylic	23 3/4" x 47 3/4"
TC-225-A	White	Acrylic	23 3/4" x 23 3/4"
TC-145-A	White	Acrylic	11 3/4" x 47 3/4"

Product Description:

- * The open cell greatly improves ventilation. This results in lower operating temperatures to improve lamp performance and increase ballast life.
- * Does not interfere with ceiling sprinkler systems and are destaticized to repel and retard dust accumulation.
- * Uniform appearance when joined together in continuous row applications.
- * Made in acrylic or styrene.
- * Available in white, black or specular silver.



**TC EGGCRATE
(5/16" THICK)**

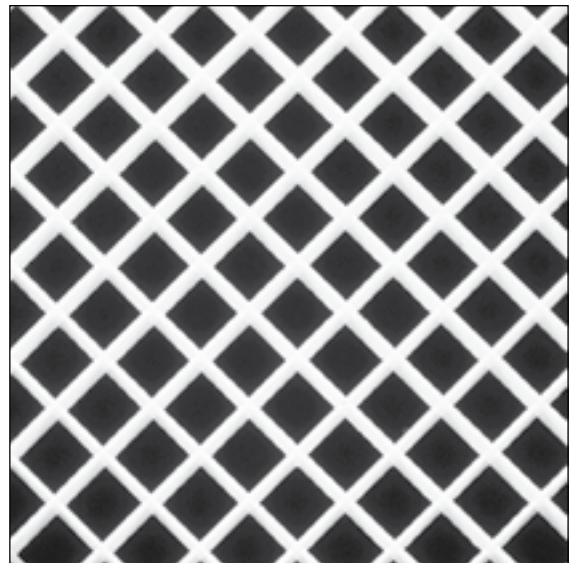
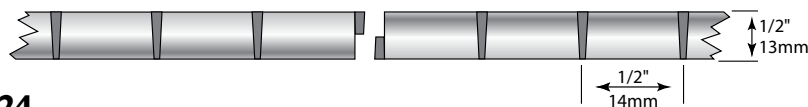
/ T-Eggcrate Standard Sizes /

PART #	COLOR	MATERIAL	SIZE
T-245	White	Styrene	23 3/4" x 47 3/4"
T-225	White	Styrene	23 3/4" x 23 3/4"
T-145	White	Styrene	11 3/4" x 47 3/4"
T-3060	White	Styrene	29 3/4" x 59 3/4"

T-245-A	White	Acrylic	23 3/4" x 47 3/4"
T-225-A	White	Acrylic	23 3/4" x 23 3/4"
T-145-A	White	Acrylic	11 3/4" x 47 3/4"

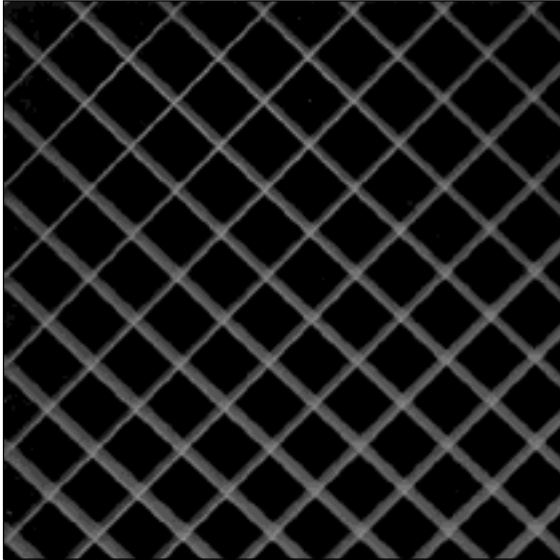
Product Description:

- * The open cell greatly improves ventilation. This results in lower operating temperatures to improve lamp performance and increasing ballast life.
- * Does not interfere with ceiling sprinkler systems and are destaticized to repel and retard dust accumulation.
- * Uniform appearance when joined together in continuous row applications.
- * Made in acrylic or styrene.



**T-EGGCRATE
(1/2" THICK)**

Aluminum Eggcrate Louvers



**ALUMINUM EGGCRATE
AL & AL-1 SERIES**

/ AL Series - Aluminum Eggcrate /

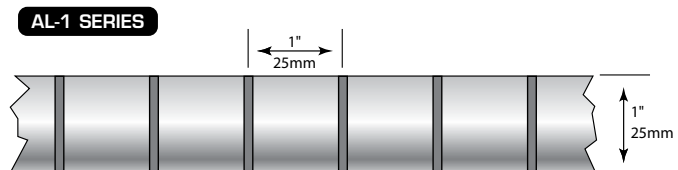
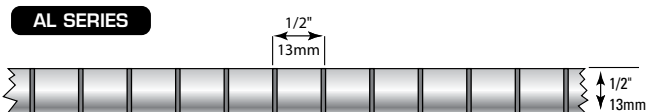
PART #	COLOR	PANEL SIZE	CELL SIZE
AL-245-C	Clear Anodized	2' x 4'	1/2" Cell
AL-245-W	White	2' x 4'	1/2" Cell
AL-245-B	Black	2' x 4'	1/2" Cell
AL-245-M	Mill	2' x 4'	1/2" Cell
AL-445-M	Mill	4' x 4'	1/2" Cell
AL-3060-M	Mill	2 1/2' x 5'	1/2" Cell

/ AL-1 Series - Aluminum Eggcrate /

PART #	COLOR	PANEL SIZE	CELL SIZE
AL-1-245-C	Clear Anodized	2' x 4'	1" Cell
ALW-1-245-W	White	2' x 4'	1" Cell
ALB-1-245-B	Black	2' x 4'	1" Cell
ALM-1-245-M	Mill	2' x 4'	1" Cell

Product Description:

- * Aluminum louvers offer a simple means of achieving a desired cutoff while maintaining compliance with strict fire codes.
- * Stock parts are available with cell sizes of 1/2" and 1" providing a 45 degree cutoff.
- * Available in a number of finishes and panel sizes to meet your needs.
- * Cell sizes up to 2 inches are available to meet special lighting and ceiling requirements.
- * Luminances are not suited for VDT/CRT intensive areas.



/ 2 X 4 / 22-1/2" x 46-1/2" / 572 x 1181 mm

NUMBER OF CELLS	18	78	105
CELL CONFIGURATION (WXL)	3 x 6	6 x 12	7 x 15
FINISH	LC SEMI-SPECULAR	LC SEMI-SPECULAR	LC SEMI-SPECULAR
PART NUMBER	L14-24-18-LC	L14-24-78-LC	L14-24-105-LC
PCS/CTN	10	10	10

/ 2 X 2 / 22-1/2" x 22-1/2" / 572 x 572 mm

NUMBER OF CELLS	9	36	49
CELL CONFIGURATION (WXL)	3 x 3	6 x 6	7 x 7
FINISH	LC SEMI-SPECULAR	LC SEMI-SPECULAR	LC SEMI-SPECULAR
PART NUMBER	L14-22-9-LC	L14-22-36-LC	L14-22-49-LC
PCS/CTN	20	20	20

Product Description:

- * Custom parabolic louvers, manufactured to meet your specific requirements.
- * 1 1/4" depth fits into most commodity troffers.
- * L14 series aluminum louvers can be manufactured to fit openings as large as 5' x 5'.

Standard finish:

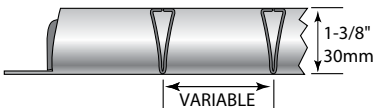
- Semi-specular anodized (**LC**)

Custom finishes:

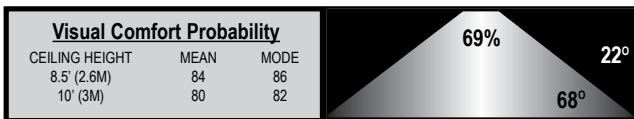
- Premium semi-specular (**LN**)
- Specular (**LS**)
- Gloss White (**W**)

Please add **bold** letter when ordering a custom finish.

Example: L14-24-2-**W** (**White**)



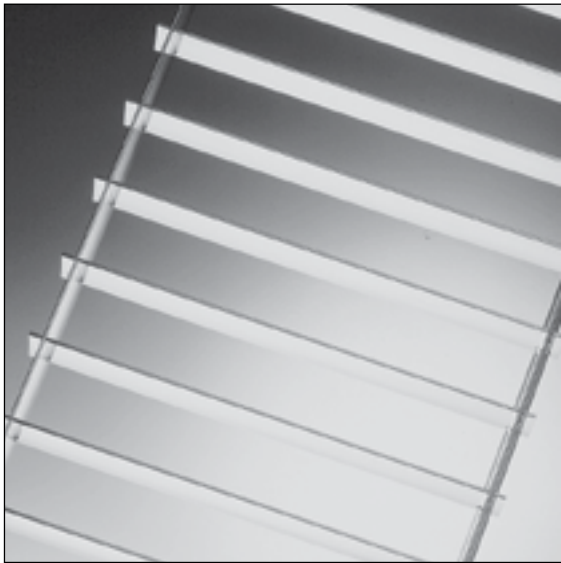
L14 ALUMINUM PARABOLIC LOUVER (1 1/4" DEPTH)



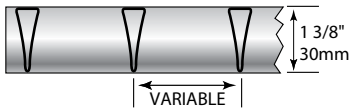
Aluminum Baffles

/ 1.4" deep parabolic aluminum baffles /

DIMENSIONAL SIZE	MINIMUM TRIM SIZE	FINISH	BLADE CENTERS	PART NUMBER
7-3/4" x 48"	5" x 48"	LC SEMI-SPECULAR	2" 3"	LB14-08-2-LC LB14-08-3-LC
9-3/4" x 48"	7" x 48"	LC SEMI-SPECULAR	2" 3"	LB14-10-2-LC LB14-10-3-LC
11-3/4" x 48"	9" x 48"	LC SEMI-SPECULAR	2" 3"	LB14-12-2-LC LB14-12-3-LC
13-3/4" x 48"	11" x 48"	LC SEMI-SPECULAR	2" 3"	LB14-14-2-LC LB14-14-3-LC



LB14 ALUMINUM PARABOLIC BAFFLES



Product Description:

- ✱ Half cells at each end butt join to provide continuous appearance.
- ✱ Custom baffles manufactured to meet your specific requirements.
- ✱ You determine the number of cells, the glare control and the efficiency.
- ✱ Variable blade centers, widths and lengths.
- ✱ Selection of finishes.
- ✱ Selection of perimeter detail.

How to order:

Please indicate the following:

- **FO**= Flange Option (N, F, D, L)
- **W**= Baffle Width (measurement)
- **L**= Baffle Length (measurement)
- **BC**= Blade Centers (measurement)
- **F**= Finish (LC, LN, LS, W)

Flange options:

- No flange (**N**)
- Flat flange (**F**)
- Drop flange (**D**)
- Loop flange (**L**)

Standard finish:

- Semi-specular anodized (**LC**)

Custom finishes:

- Premium semi-specular (**LN**)
- Specular (**LS**)
- Gloss White (**W**)

Part #: LB14-**FO**-**W**-**L**-**BC**-**F**

Example: LB14-**F**lange **O**ption-**W**idth-**L**ength-**B**lade **C**enter-**F**inish

or: LB14-**N**-6.25-48-3-**LN**

Diffusers

Product Description:

- * Vacuum formed diffusers made of 100% acrylic for years of performance.
- * Standard finish in white stipple acrylic. Optional clear prismatic pattern available.
- * A wide variety of sizes for use in recessed and surface mount fixtures, wood frames and tee bar ceiling applications

Ordering drop dish diffusers:

To accurately identify which drop dish diffuser you have, please follow these steps and fax or call Plast-D-Fusers.

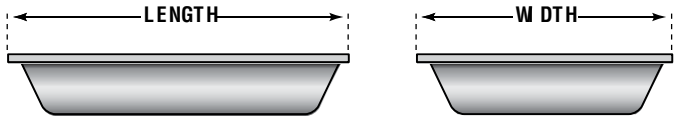


**DROP DISH DIFFUSER
MOLDED FLANGED ON ALL SIDES**

Drop Dish Worksheet: Copy this page BEFORE filling in the information, and then fax back to us:

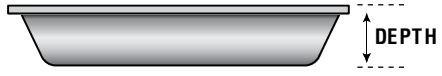
1. Measure overall length and width, including flange, and indicate below:

_____ x _____
Length Width



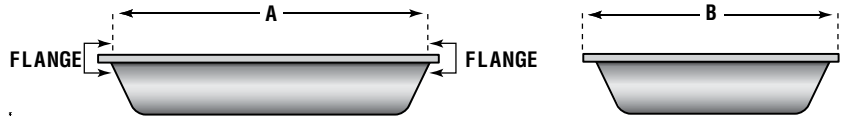
2. Measure depth:

Depth: _____



3. Measure "drop" or "body" size (without flange):

_____ x _____
A B



4. Specify material: (circle one)

Clear Prismatic Smooth White Acrylic Other _____



**SNAP DISH DIFFUSER
FLANGELESS**

Product Description:

- * Standard finish in white stipple acrylic. Optional clear prismatic pattern available.
- * Standard sizes are vacuum formed in 100% acrylic.
- * Custom sizes are fabricated to your specifications.
- * Reinforced slotted holes.

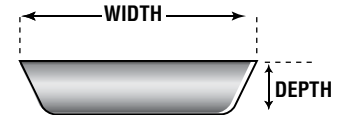
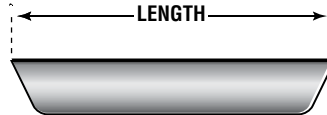
Ordering snap dish diffusers:

To accurately identify which drop dish diffuser you have, please follow these steps and fax or call Plast-D-Fusers.

Snap Dish Worksheet: Copy this page BEFORE filling in the information, and then fax back to us:

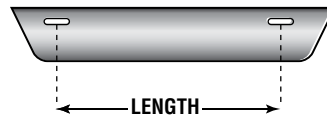
1. Measure overall length and width, and depth, and indicate below:

_____ Length x _____ Width x _____ Depth



2. Slotted hole location:

Center to Center measurement: _____



3. Specify material: (circle one)

Clear Prismatic

Smooth White Acrylic

Other _____

/ Maximizer Diffuser /

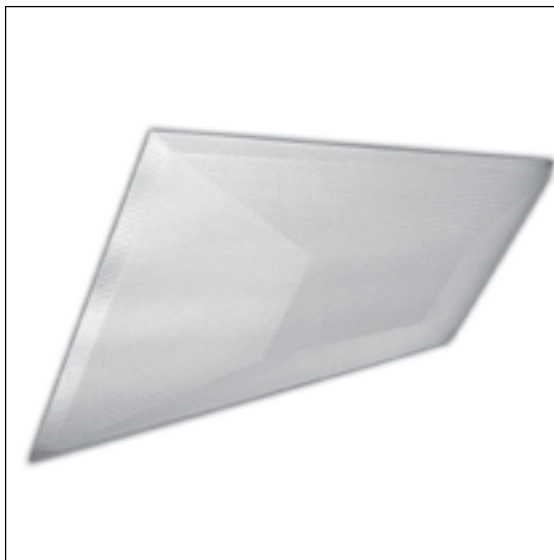
PART #	DESCRIPTION	COLOR	SIZE
VF-200-450-CA	Prismatic	Clear	23 3/4 x 47 3/4
VF-195-195-CA	Prismatic	Clear	23 3/4 x 23 3/4
VF-092-447-CA	Prismatic	Clear	11 3/4 x 47 3/4

Product Description:

- * Maximizer diffuser provides an aesthetically pleasing contrast to conventional lay in troffer lenses.
- * Unique pyramidal design provides depth and texture to ceiling sight lines.
- * Ideally suited for retrofit applications where the light fixtures have been de-lamped, or any area in which increased over all lighting is desired.
- * Vacuum formed in prismatic acrylic for long lasting performance.
- * Designed for use in most 2' x 4', 2' x 2' and 1' x4' troffers.

Ordering maximizer diffusers:

Maximizer diffusers are designed to fit into existing troffer door frames. Measure the existing lens or door frame and call or fax us with your information.



MAXIMIZER DIFFUSER



CLOUD DIFFUSER

/ Cloud Diffuser /

PART #	DESCRIPTION	OVERALL SIZE	OPENING SIZE
F62IW125-117520	CLOUDLINE LENS	11.75 x 52"	8 1/2" x 48 3/4"
F62IW125-11752S	CLOUDLINE LENS	11.75 x 52"	7 3/4" x 48 3/4"
F62IW125-145510	CLOUDLINE LENS	14.5" x 51"	12" x 48 1/2"
F62IW125-170280	CLOUDLINE LENS	17" x 28"	13 3/4" x 24 3/4"
F62IW125-17028S	CLOUDLINE LENS	17" X 28"	13 1/8" x 24 3/4"
F62IW125-170520	CLOUDLINE LENS	17" x 52"	13 3/4" x 48 3/4"
F62IW125-17052S	CLOUDLINE LENS	17" x 52"	13 1/8" x 48 3/4"
F62IW125-260275	CLOUDLINE LENS	26" x 27 1/2"	24" x 24 1/2"
F62IW125-260510	CLOUDLINE LENS	26" x 51"	24" x 48 1/2"

Mini cloud-curved bottom style

PART #	OVERALL SIZE (sq.)	TRIM (sq.)	OPENING SIZE	DEPTH
64-123-123	12 3/8"	10 11/16"	9 7/8"	2 3/4"
64-152-152	15 1/4"	13 5/8"	12 3/4"	3 "
64-201-201	20 1/8"	18 1/2"	17 5/8"	3 1/4"

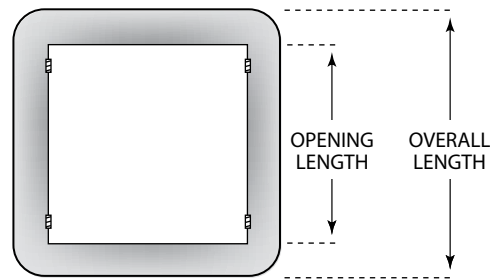
Product Description:

- * Cloudlite diffusers feature a soft rounded corner design for a contemporary look.
- * Cloudlite diffusers are made of 100% acrylic for years of performance.
- * White acrylic finish for uniform light distribution.

Cloud Diffuser Worksheet: Copy this page BEFORE filling in the information, and then fax back to us:

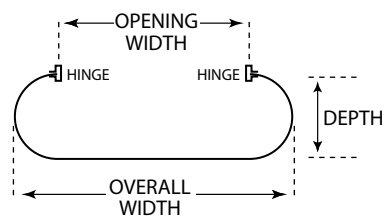
1. Measure overall length and opening length and indicate below:

_____ Overall Length
 _____ Opening Length



2. Measure overall width, opening width, and depth:

_____ Overall Width
 _____ Opening Width
 _____ Depth



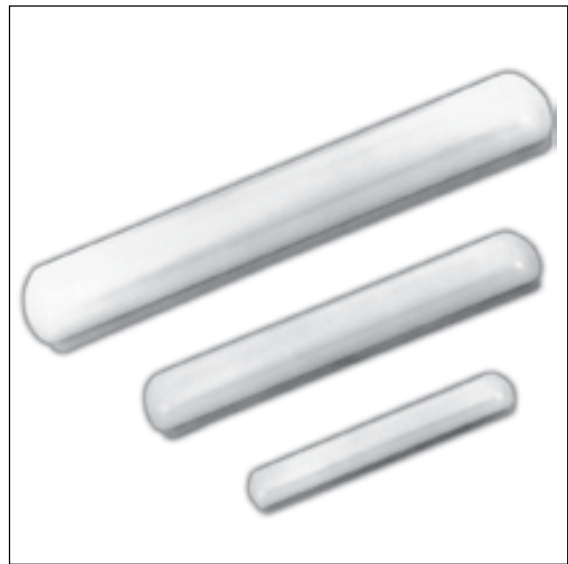
/ Cloud Bracket Assembly Diffuser /

PART #	SIZE	OVERALL SIZE	OPENING SIZE	HEIGHT
F62-060-268	1/2' x 2'	6" x 26 3/4"	4 5/8" x 24 1/4"	4 1/2"
F62-060-388	1/2' x 3'	6" x 38 3/4"	4 5/8" x 36 1/4"	4 1/2"
F62-060-508	1/2' x 4'	6" x 50 3/4"	4 5/8" x 48 1/4"	4 1/2"
X62-000-002	8/32"	Screw and Plug Assembly		

Product Description:

- * Cloud Bracket's sleek design quickly converts standard strip fixtures into contemporary light fixtures.
- * Cloud Brackets feature a soft curved diffuser that totally envelops the metal housing.
- * Cloud Bracket Diffusers mount easily to strip fixtures utilizing screw and plug hardware.
- * Perfect for bathrooms, hallways, corridors and any other areas where standard strip fixtures are being used.
- * Available in 2', 3' and 4' lengths.
- * White acrylic finish.

Each Cloud Bracket Diffuser is supplied with two 3/16" diameter holes on ends designed for 8/32" mounting screws. Screw and plug assembly supplied with each Cloud Bracket Diffuser.



DIFFUSERS: CLOUD BRACKET ASSEMBLY

Cloud Bracket Worksheet: Copy this page BEFORE filling in the information, and then fax back to us:

1. Measure overall width:

Width

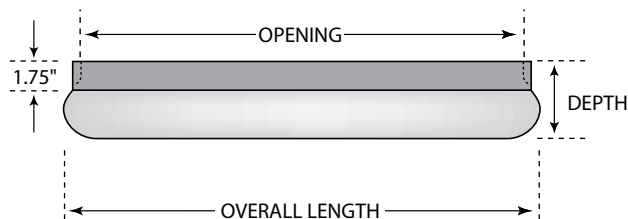


2. Measure opening, overall length, and depth:

Opening

Overall Length

Depth



3. Specify module: (circle one)

1/2' x 2'

1/2' x 3'

1/2' x 4'



SQUARELINE DIFFUSERS

/ Squareline Diffuser /

PART #	DESCRIPTION	OVERALL SIZE	OPENING SIZE
F601WI25135500	SQUARELINE DIFFUSER 1 x 4	13 1/2" x 50"	12" x 48 1/2"
F60IW125-255260	SQUARELINE DIFFUSER 2 x 2	25 1/2" x 26"	24" x 24 1/2"
F60IW125-255500	SQUARELINE DIFFUSER 2 x 4	25 1/2" x 50"	24" x 48 1/2"
F60IW125-495500	SQUARELINE DIFFUSER 4 x 4	49 1/2" x 50"	48" x 48 1/2"

Mini square-flat bottom style:

PART #	OVERALL SIZE (sq.)	TRIM (sq.)	OPENING SIZE	DEPTH
A6-115-115	11 1/2"	10 5/8"	9 7/8"	3"
A6-143-143	14 3/8"	13 1/2"	12 3/4"	3 1/4"
A6-192-192	19 1/4"	18 3/8"	17 5/8"	3 3/4"

Silhouette Style-Up flange:

PART #	OVERALL SIZE (sq.)	TRIM (sq.)	OPENING SIZE	DEPTH
RLR-7011	12"	10 1/2"		2 5/8"
RLR-7015	14 1/2"	12 5/8"		2 3/4"
RLR-7019	19 1/2"	17 3/4"		2 7/8"

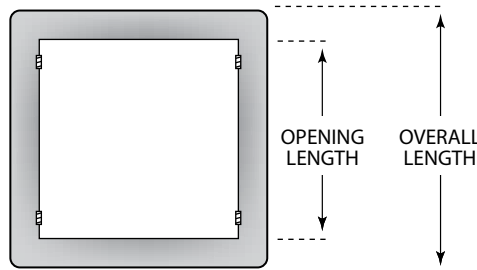
Product Description:

- * Fine pattern surface provides uniformity of light diffusion with up-light component.
- * Unique profile opens new approaches in hinging techniques with aesthetics in mind.
- * White acrylic.

Squareline Diffuser Worksheet: Copy this page BEFORE filling in the information, and then fax back to us:

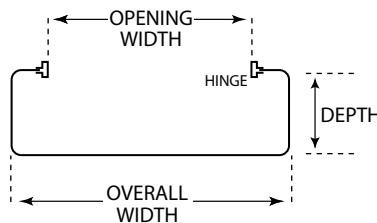
1. Measure overall length and opening length and indicate below:

_____ Overall Length
 _____ Opening Length



2. Measure overall width, opening width, and depth:

_____ Overall Width
 _____ Opening Width
 _____ Depth



3. Specify material: (circle one)

Clear Prismatic White Acrylic Other _____

<i>Circline style diffusers:</i>				
PART #	DIAMETER	TRIM	OPENING	DEPTH
A6-110-000	11"	9 7/8"	9 1/4"	2 3/4"
A6-137-000	13 3/4"	12 5/8"	12"	3"
A6-190-000	19"	16 7/8"	16"	3 3/4"
<i>Cloudlite style diffusers:</i>				
PART #	DIAMETER	TRIM	OPENING	DEPTH
LP-2011	12"	9 3/8"	9"	2 1/2"
LP-2014	14"	12 5/8"	12"	2 1/2"
LP-2019	19"	17 3/4"	17"	2 1/2"
LP-6011	12"	9 3/8"	9"	4 1/2"
LP-6014	14"	12 5/8"	12"	4 1/2"
LP-6019	19"	17 3/4"	17"	4 1/2"



CIRCLINE AND CLOUDLITE DIFFUSERS

Product Description:

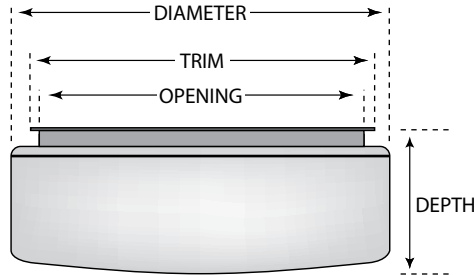
- * Available in two distinctive styles for surface mounted fixtures.
- * Ideally suited for use in fixtures using either circline or compact fluorescent lamps.
- * Standard finish is smooth white acrylic.
- * For vandal areas, smooth white polycarbonate is available.

Polycarbonate diffusers are available in some sizes. Minimums may apply. Contact Plast-D-Fusers with your requirements

Circline/Cloudlite Worksheet: Copy this page BEFORE filling in the information, and then fax back to us:

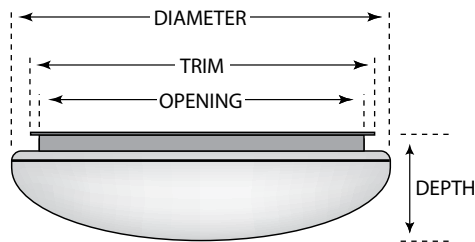
1. Circline Measure diameter, trim size, opening, and depth:

_____ Diameter _____ Opening
 _____ Trim size _____ Depth



1. Cloudlite Measure diameter, trim size, opening, and depth:

_____ Diameter _____ Opening
 _____ Trim size _____ Depth



2. Specify material: (circle one)

Clear Prismatic White Acrylic Other _____



/ Drum Diffuser /

PART #	DESCRIPTION	DIAMETER	DEPTH
RLR-900S	10" ACRYLIC DRUM	10"	3 5/8"
VF-124-000	11 1/2" ACRYLIC DRUM	12 1/2"	3 5/8"
RLR-904S	13" ACRYLIC DRUM	13"	3 5/8"
RLR-804S	16" ACRYLIC DRUM	16 11/16"	3 1/4"
A55-180-000	18" ACRYLIC DRUM	18"	4"

Product Description:

- * Drum diffusers are formed in 100% acrylic for years of performance.
- * Suitable for use with fluorescent and incandescent lights.
- * Standard finish is white stipple.

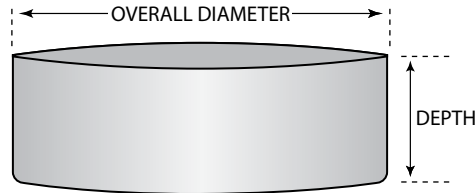
DRUM DIFFUSERS

Drum Diffuser Worksheet: Copy this page BEFORE filling in the information, and then fax back to us:

1. Measure overall diameter and depth:

_____ **Diameter**

_____ **Depth**



2. Specify material: (circle one)

Clear Prismatic

White Smooth Acrylic

Other _____

/ Round Dome Diffuser /

PART #	BODY SIZE	MAX TRIM SIZE	DEPTH
B50-060-000	6" Diameter	10" Diameter	As Specified
B50-070-000	7" Diameter	11" Diameter	As Specified
B50-080-000	8" Diameter	12" Diameter	As Specified
B50-090-000	9" Diameter	13" Diameter	As Specified
B50-100-000	10" Diameter	14" Diameter	As Specified
B50-110-000	11" Diameter	15" Diameter	As Specified
B50-120-000	12" Diameter	16" Diameter	As Specified



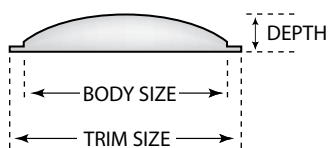
ROUND DOME DIFFUSERS

Product Description:

- * Designed for use with various light sources including fluorescent, incandescent and HID lamps.
- * Variety of standard shapes to choose from. Custom fabrication is also available.
- * Most products manufactured in acrylic, in either white or clear.

Round Dome Diffuser Worksheet: Copy this page BEFORE filling in the information, and then fax back to us:

1. Measure body size, trim size, and depth:

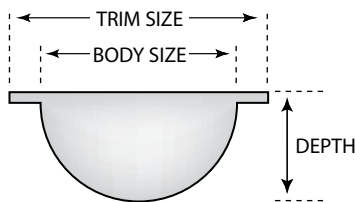


Shallow Type

Body Size

Trim Size

Depth

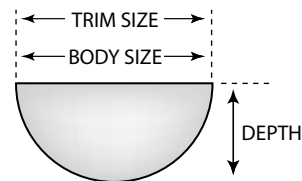


Flange Type

Body Size

Trim Size

Depth



Flangeless Type

Body Size

Trim Size

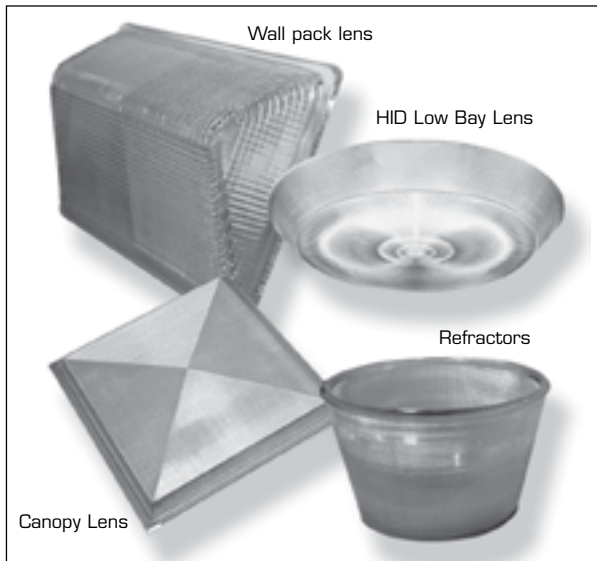
Depth

2. Specify material: (circle one)

Clear Acrylic

White Acrylic

Other _____



Plast-D-Fusers carries a wide variety of HID replacements lenses, diffusers and refractors. Our products are suitable for applications such as:

- * High & Low Bay Lighting Applications
- * Wall packs
- * Canopy & Gas Station Lighting Applications
- * Post and Yard Lighting Applications

The following are some of the many parts we stock. Custom parts are available - please call if you don't find what you're looking for!

H.I.D. DIFFUSERS

PART #	DESCRIPTION	OVERALL SIZE	DEPTH
HID Low Bay Lens			
LEX-622	22" Diameter HID Acrylic Lens	22"	
LEX-630	30" Diameter Clear Acrylic HID Lens	30"	
HID Canopy Lens			
LEX-305-A	1 X 1' Acrylic Drop Lens	12" X 12"	2 1/2"
LEX-305-A	2' X 2' Acrylic Drop Lens	20" X 20"	2 1/2"
F30HC200-193-193	2' X 2' Acrylic Drop Lens	21 1/2" X 21 1/2"	3"
A3-142-142	1 1/2' X 1 1/2' Acrylic Drop Lens	16" X 16"	2 1/4"
F371C125-192-192	2' X 2' Pyramid Bottom Drop Lens	21 1/2" X 21 1/2"	3"
Post and Yard Refractors			
LEX-200-CB	Polycarbonate Tapered Closed Bottom Refractor	16"	8"
LEX-205-OB	Polycarbonate Tapered Open Bottom Refractor	16"	8"
LEX-210-CB	Acrylic Tapered Closed Bottom Refractor	16"	8"
LEX-215-OB	Acrylic Tapered Open Bottom Refractor	16"	8"
LEX-220-CB	Polycarbonate Straight Sided Closed Bottom Refractor	9 1/2"	5 3/4"
LEX-225-OB	Polycarbonate Straight Sided Open Bottom Refractor	9 1/2"	5 3/4"
LEX-230-CB	Acrylic Straight Sided Closed bottom Refractor	9 1/2"	5 3/4"
LEX-235-OB	Acrylic Straight Sided Open bottom Refractor	9 1/2"	5 3/4"
LEX-240-CB	Polycarbonate Straight Sided Closed Bottom Refractor	12"	6 3/4"
LEX-245-OB	Polycarbonate Straight Sided Open Bottom Refractor	12"	6 3/4"
LEX-260-CB	Polycarbonate Tapered Closed Bottom Refractor	12"	7"
LEX-265-OB	Polycarbonate Tapered Open Bottom Refractor	12"	7"
LEX-270-CB	Acrylic Tapered Closed Bottom Refractor	12"	7"
LEX-275-OB	Acrylic Tapered Open Bottom Refractor	12"	7"
Wall Pack Lenses			
WP-DC-100	Polycarbonate	8 1/2" x 7" x 3"	
WP-DC-150-G	Borosilicate Glass	12" x 9" x 7 1/2"	
WP-DC-150-P	Polycarbonate	12" x 9" x 7 1/2"	
WP-DC-200-G	Borosilicate Glass	18" x 9" x 9 3/4"	
WP-DC-200-P	Polycarbonate	18 x 9" x 9 3/4"	

Enclosures

/ Vapor Proof - Fiberglass Enclosure /

PART	SIZE	DESCRIPTION
EG 240 CU	4 ft.	Polyester Fiberglass Housing with gasket Standard Crepe Diffuser 6 Plastic Cam Latches
EG 296 CU	8 ft.	Polyester Fiberglass Housing with gasket Standard Crepe Diffuser 12 Plastic Cam Latches

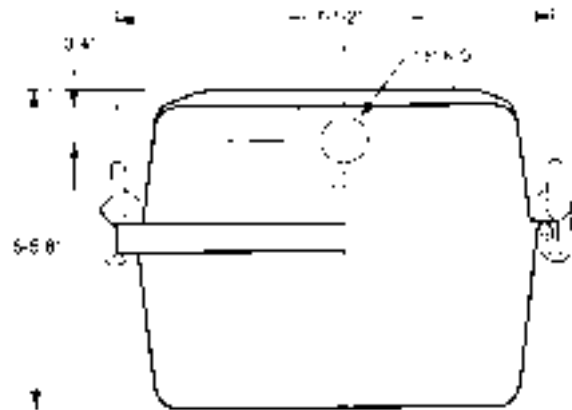
Product Description:

- * Suitable for exterior applications, food processing areas, or environments where water vapor or high humidity are present.
- * Weather resistant and corrosion free fiberglass units. No exposed metal parts to corrode.
- * The housing is molded of high impact polyester fiberglass and is fire retardant.
- * All units have a continuously bonded neoprene gasket and crepe acrylic diffuser, secured by plastic cam latches. Standard assemblies include gasketed housing, 6 or 12 latches and an acrylic diffuser.



**VAPOR PROOF -
FIBERGLASS ENCLOSURE**

Overall Length:	4' units:	49-3/4"
	8' units:	97-3/4"
Mounting Studs:	4' units:	38-3/4" O.C.
	8' units:	86-5/8" O.C. for 8' strip fixtures
		40-3/4" O.C. for two 4' strip fixtures





CITADEL 2™ VAPOR PROOF ENCLOSURES

/ Citadel 2: Vapor Proof Enclosures /

PART #	DESCRIPTION	SIZE
CT2-DDR-2L2K	2 Lamp Width, Gasketed Enclosure	2'
CT2-DDR-2L4K	2 Lamp Width, Gasketed Enclosure	4'
CT2-DDR-2L5K	2 Lamp Width, Gasketed Enclosure	5'
CT2-DDR-2L84K	2 Lamp Width, Gasketed Enclosure (For Polycarbonate diffuser add "PC" to part number)	8'

CT2-SS-MB	Stainless Steel Mounting Bracket	
(Not included in kit pricing)		
(2 Brackets required for 2', 4' & 5' units. 3 Brackets required for 8' unit)		

CITADEL 2's™ fiberglass housing combined with the Hi-Impact acrylic or optional heavy duty injection molded polycarbonate diffuser, provide outstanding protection for your fluorescent T5 and T8 strip fixtures. CITADEL 2's™ innovative mounting system saves time and preserves the vapor seal. The sleek diffuser design offers a new contemporary look to vapor and damp location fixtures.

- * 2, 4, 5 and 8 foot lengths available.
- * Polycarbonate latches standard. Stainless steel latches optional.
- * Wider housing accepts both 1 and 2 light fixtures.
Narrow width accepts strips up to 1.875" wide.
- * Innovative mounting brackets save installation time and preserve seal.

Each CITADEL 2's™ Gasketed Enclosure Kit contains the following:

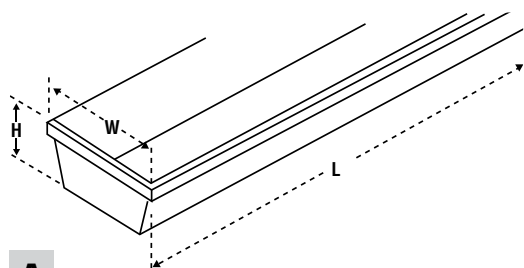
- * 1 V5A Housing
- * 1 Lineal Ribbed Hi-Impact Acrylic Lens
- * 8 Polycarbonate Latches & 2 Rubber End Plugs

Vapor Proof Lens Styles: Identification & Ordering Guide

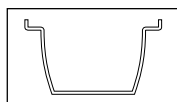
1. Identify the style of vapor proof lens you have. Indicate whether it is style A,B,C, or D.
2. Measure accurately length, width, etc. at the points shown on the chart for your style lens.
3. Indicate material color.
4. Indicate quantity required.
5. Are latches needed? How many?



Copy this page BEFORE filling in the information, and then fax back to us:

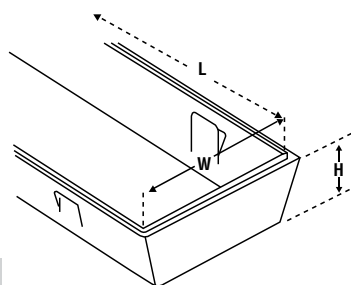


A

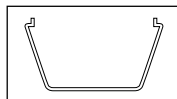


Flanged Lip Style "A"

_____	x	_____	x	_____
Length	x	Width	x	Depth

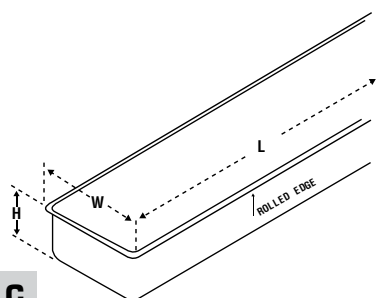


B

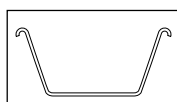


Latch Indent Style "B"

_____	x	_____	x	_____
Length	x	Width	x	Depth

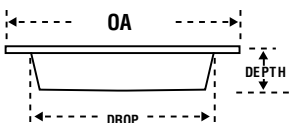


C



Curled Lip Style "C"

_____	x	_____	x	_____
Length	x	Width	x	Depth



D

Style "D"

_____	x	_____	x	_____	_____	_____
Length	x	Width	x	Depth	Drop(W)	Drop(L)

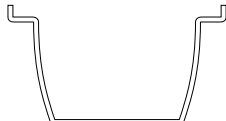
Vapor Proof Lens Styles

VAPOR PROOF LENS RETURN FLANGE "A" STYLE

PART #	LENGTH	MAX TRIM SIZE	DROP SIZE	DEPTH	MATERIAL (OPTIONS)
AL-60-749	4'	7 1/16" x 49 15/16"	6 1/16" x 48 7/8"	2 1/2"	1
F44-048-510	4'	4 7/8" x 51"	4 7/8" x 51"	4 3/4"	2
F44-095-270	2'	9 1/2" x 27"	9 1/2" x 27"	3 1/4"	2
F44-092-510	4'	9 1/2" x 51"	9 1/2" x 51"	3 1/4"	2,3
CV-800-CP-2	2'	8 1/4" x 26 1/4"	8 1/4" x 26 1/4"	3 1/2"	2
CV-800-CP-4	4'	8 1/4" x 50 1/4"	8 1/4" x 50 1/4"	3 1/2"	2
TF-429	4'	8 5/8" x 49 1/8"	7 5/8" x 49 1/8"	3 11/16"	4

Material Key:

- 1=Window Clear Polycarbonate
 2=Clear Prism Polycarbonate
 3=White Prism Polycarbonate



VAPOR PROOF LENS LATCH INDENT "B" STYLE

PART #	LENGTH	MAX TRIM SIZE	DROP SIZE	DEPTH	MATERIAL (OPTIONS)
DVA-240	4'	7 3/8" x 51 1/8"	6 1/2" x 50 7/16"	2"	1
DVA-240R	4'	7 3/8" x 51 1/8"	6 1/2" x 50 7/16"	2"	2
7-494-3700	4'	7" x 50 1/8"	6 1/2" x 49 5/8"	2 1/8"	1
HUB-10089	4'	5 7/8" x 50"	5 7/8" x 50"	2 1/2"	1
FV-4	4'	6 15/16" x 49 1/2"	6 3/8" x 49"	3 1/8"	1
HUB-100190	8'	5 7/8" x 98"	5 7/8" x 98"	2 1/2"	1

Material Key:

- 1=Clear Stipple Acrylic
 2=Clear Stipple Hi-Impact Acrylic



VAPOR PROOF LENS CURLED LIP "C" STYLE

PART #	LENGTH	MAX TRIM SIZE	DROP SIZE	DEPTH	MATERIAL (OPTIONS)
MET-VT2-240	4'	6 7/16" x 49 11/16"	5 7/8" x 49 1/4"	2 1/8"	1,2
VF-066-970-S81C	8'	7 1/4" X 97 5/8"	6 3/4" X 97 1/8"	3 3/4"	1,2
NP-240	4'	6 5/8" x 50 11/16"	6" x 50 1/8"	2 3/8"	1,2
WP-240	4'	7 5/16" x 51 11/16"	6 7/8" x 51 3/16"	2 1/4"	1
H4-070-515	4'	7 7/16" x 51 5/8"	6 7/8" x 51 1/4"	2"	3
EG-240	4'	7 5/16" x 49 5/8"	6 3/4" x 49 1/8"	2 9/16"	1
H4-070-985	8'	7 7/16" x 98 7/8"	6 3/4" x 98 1/8"	2 1/4"	3
WP-296	8'	7 1/4"	10 1/2"	2 3/4"	1
EG-296	8'	7 1/4" x 97 5/8"	6 3/4" x 97 1/8"	2 1/2"	1
EG-296-HO	8'	7 1/4" x 97 5/8"	6 3/4" x 97 1/8"	3"	1
MET-VT2-296	8'	6 7/16" X 97 5/8"	5 7/8" X 97"	3"	1
MET-VT1-296	8'				

Material Key:

- 1=Clear Stipple Acrylic
 2=Clear Stipple Hi-Impact Acrylic
 3=Clear Prismatic Acrylic



VAPOR PROOF LENS FLANGED LIP "D" STYLE

PART #	LENGTH	MAX TRIM SIZE	DROP SIZE	DEPTH	MATERIAL (OPTIONS)
A4-050-490	4"	5 3/4" x 49 3/4"	4 7/8" x 48 7/8"	2 1/8"	1,5
ARM-80486R	4'	6 9/16" x 49 1/2"	6 1/8" x 49 1/4"	2 7/8"	1
VF-050-485	4'	6" x 49 3/4"	5" x 48 5/8"	2 1/8"	2,3,4,5
VF-064-490	4'	7 1/4" x 49 5/8"	6 1/2" x 49"	3 1/8"	2,3,4,5
LU-240	4'	7 1/4" x 50"	6 1/2" x 49 1/4"	2 5/8"	3
VF-065-486	4'	7 3/8" x 49 5/8"	6 5/8" x 48 3/4"	2 1/2"	2,3,4,5
A4-066-487	4'	8 1/8" x 51"	6 3/4" x 48 7/8"	3 1/4"	1,5
A4-068-493	4'	8 5/16" x 50 7/8"	6 7/8" x 49 3/8"	3 1/2"	1,5
VF-087-486	4'	9 5/8" x 49 1/2"	8 7/8" x 48 3/4"	2 3/4"	2,3,4,5
VF-104-490	4'	11 5/8" x 49 5/8"	10 3/4" x 49"	3 1/8"	2,3,4,5

ARM-80966R	8'	6 5/8" x 97 11/16"	6 1/4" x 97 1/2"	3"	1
LU-296	8'	7 1/4" x 98"	6 3/8" x 97 1/2"	2 9/16"	3
A4-066-987	8'	8 1/4" x 98 3/8"	6 5/8" x 96 3/4"	3 3/8"	1,5

Material Key:

- 1=Clear Stipple Acrylic
- 2=Window clear Acrylic
- 3=Clear prismatic Acrylic
- 4=Clear prismatic Hi-Impact Acrylic
- 5=Smooth White Acrylic



We have many factory original vapor proof lenses for Lithonia, Metalux, Genlyte, and others.

/ Vapor Proof Hardware /

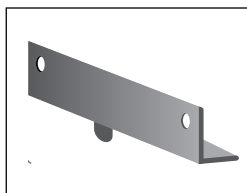
PART #	ACCESSORY OPTIONS
EG DCB	Die cast bushing for 3/4" K.O. EG or "O" ring EG DBC
EG TN	3 1/2" threaded nipple
EG BB	Back mounting bracket (2 per kit)
EG EB	End mounting bracket (2 per kit)
EG P	End Plug



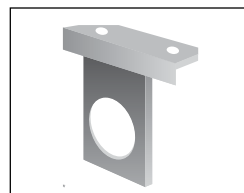
EG DCB
Die Cast Bushing



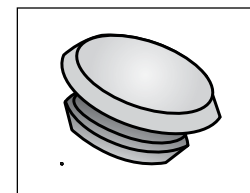
EG TN
Threaded Nipple



EG BB
Mounting Bracket

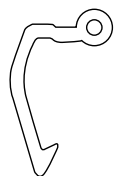


EG EB
End Bracket

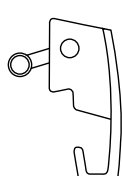


EG P
End Plug

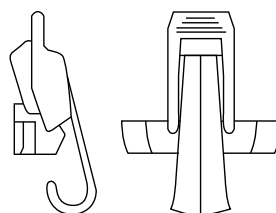
Most vapor proof latches are available in Tamper Proof and Stainless Steel.



DVA

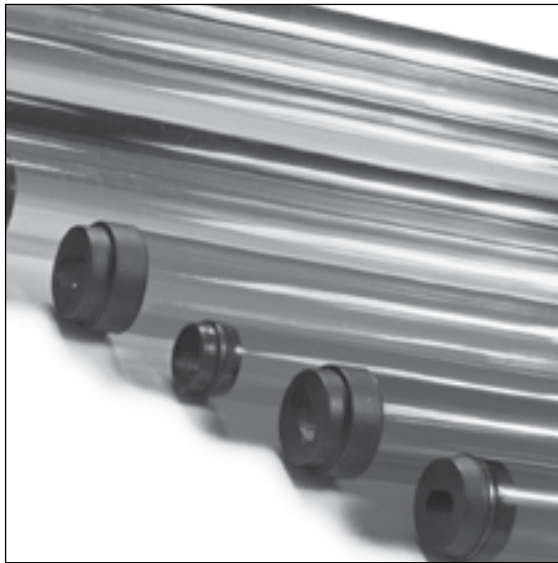


OPUS



EG

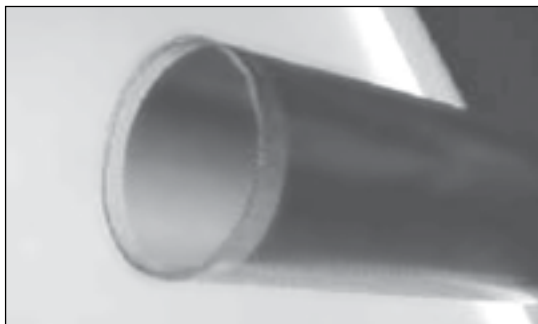
Tube Guards / Sleeves



T5, T8 AND T12 TUBE GUARD SLEEVES

Product Description:

- * Protective sleeves slide over fluorescent lamps and are secured with two heat resistant end caps.
- * Economical and effective way to meet local health and safety codes.
- * Tube guards capture broken glass and phosphorus within the tube should the lamp break.
- * Special U.V. filtering tube guards for darkrooms, museums, clean rooms, graphic arts, daylight film, retail stores and other applications.



GRADIENT TUBE GUARDS

/ T5 Standard Sizes /

PART #	DESCRIPTION	TUBE LENGTH	COLOR	CASE QTY.
T5-20	T5-14W	20 3/4"	Clear	125
T5-30	T5-21W	32 7/8"	Clear	125
T5-40	T5-28W	45 1/8"	Clear	125

Available in the following colors: **A**mber, **B**lue, **G**reen, **P**ink, **R**ed, **P**urple & **Y**ellow. Add bold letter to end of part number to designate color. Example:T5-40-**R**.

/ T8 Standard Sizes /

PART #	DESCRIPTION	TUBE LENGTH	COLOR	CASE QTY.
T8-15	F15	16 3/8"	Clear	24
T8-17	F17	22 7/16"	Clear	24
T8-25	F25	34 7/16"	Clear	24
T8-30	F30	34 3/8"	Clear	24
T8-32	F32	46 7/16"	Clear	48
T8-40	F40	58 5/16"	Clear	24
T8-96	F96	92 7/16"	Clear	48

Available in the following colors: **A**mber, **B**lue, **G**reen, **P**ink, **R**ed, **P**urple & **Y**ellow. Add bold letter to end of part number to designate color. Example:T8-32-**R**.

/ T12 Standard Sizes /

PART #	DESCRIPTION	TUBE LENGTH	COLOR	CASE QTY.
FG-40	F40	46 1/4"	Clear	24
FG-60	F60	56 1/4"	Clear	24
FG-72	F72	68 1/4"	Clear	24
FG-96	F96	92 1/4"	Clear	24

FG-96-HO	F96 High Output	92 1/4"	Clear	24

High output sleeves come complete with two (2) heat sink screens and end caps. 1500 ma lamps (VHO) are not recommended.

Available in the following colors: **A**mber, **B**lue, **G**reen, **P**ink, **R**ed, **P**urple & **Y**ellow. Add bold letter to end of part number to designate color. Example:FG-40-**R**.

/ Gradient Tube Guards /

PART #	DESCRIPTION	CASE QTY.
T5-40-GRAD	T5-28W	125
T8-32-GRAD	T8-32, 4'	24
FG-40-GRAD	F40T12, 4'	24

Product Description:

- * Gradient tube guards act like a "dimming" device for fluorescent lights.
- * Available in T12 and T8 sizes.
- * Applications include task lighting.
- * Gradient tub guards rotate around the bulb to allow more or less light to pass through.

Tube Guards / Special U.V. Filtering Sleeves

/ Clear general purpose U.V. filtering sleeves /

PART #	DESCRIPTION	TUBE LENGTH	COLOR	CASE QTY.
T5-40-UV	T5-28W	45 1/8"	Clear	125
T8-32-UV	F32	46 7/16"	Clear	24
T8-96-UV	F96	92 7/16"	Clear	24
FG-40-UV	F40	46 1/4"	Clear	24
FG-96-UV	F96	92 1/4"	Clear	24

/ Super Red U.V. filtering sleeves /

PART #	DESCRIPTION	TUBE LENGTH	COLOR	CASE QTY.
T8-32-R10	F32	46 7/16"	Super Red	24
T8-96-R10	F96	92 7/16"	Super Red	24
FG-40-R10	F40	46 1/4"	Super Red	24
FG-96-R10	F96	92 1/4"	Super Red	24

/ Litho Gold U.V. filtering sleeves /

PART #	DESCRIPTION	TUBE LENGTH	COLOR	CASE QTY.
T5-40-G10	T5-28W	45 1/8"	Litho Gold	125
T8-32-G10	F32	46 7/16"	Litho Gold	24
T8-96-G10	F96	92 7/16"	Litho Gold	24
FG-40-G10	F40	46 1/4"	Litho Gold	24
FG-96-G10	F96	92 1/4"	Litho Gold	24

/ Ultra White U.V. filtering sleeves /

PART #	DESCRIPTION	TUBE LENGTH	COLOR	CASE QTY.
T8-32-W10	F32	46 7/16"	Ultra White	24
T8-96-W10	F96	92 7/16"	Ultra White	24
FG-40-W10	F40	46 1/4"	Ultra White	24
FG-96-W10	F96	92 1/4"	Ultra White	24

These products offer varying degrees of ultra-violet filtering and blockage.

See page 14 for detailed information on our UV products.

CLEAR GENERAL PURPOSE U.V. FILTERING SLEEVES

Product Description:

- * Applications include museums, libraries and archive protection.
- * These products eliminate U.V rays from 0-365 nanometers.

SUPER RED U.V. FILTERING SLEEVES

Product Description:

- * Applications: Dark room applications, graphic arts, printing, x-ray markets. Used for all types of blue and green sensitive film.
- * Elimination of U.V., violet, blue and green rays from 0-630 nanometers.

LITHO GOLD U.V. FILTERING SLEEVES

Product Description:

- * Applications: Printing plates, screen-printing, printed circuits, bright light film, dairy, produce and poultry product displays.
- * Elimination of U.V., violet and blue rays from 0-525 nanometers.
- * This filter completely eliminates photosynthesis.

ULTRA WHITE U.V. FILTERING SLEEVES

Product Description:

- * Applications: Daylight films, museums, archives, lupus patients and any applications where U.V. blockage is desired while maintaining a white light.
- * Other common U.V. blocking sleeves eliminate generally 365 nanometers.
- * Blockage of U.V. and violet rays of T8 & T12 bulbs from 0-417 nanometers, while still offering white light.

Tube Guards / Accessories



END CAPS

/ End Caps: available in T5, T8 & T12 sizes /

PART #	DESCRIPTION
EC-5	T5 Black End Cap
EC-8	T8 Black End Cap
EC-12	T12 Black End Cap

/ Locking End Caps / Refrigerator and cooler applications

PART #	DESCRIPTION
LR-88C-8	T8 White Locking End Cap
LR-88C-12	T12 White Locking End Cap

Product Description:

- * Made of black, high heat polypropylene with a universal cut out to accommodate all types of lamp pin configurations.
- * Locking end caps secure the lamp into sockets.
- * Uses include coolers and refrigerated cases.



HEAT SCREENS

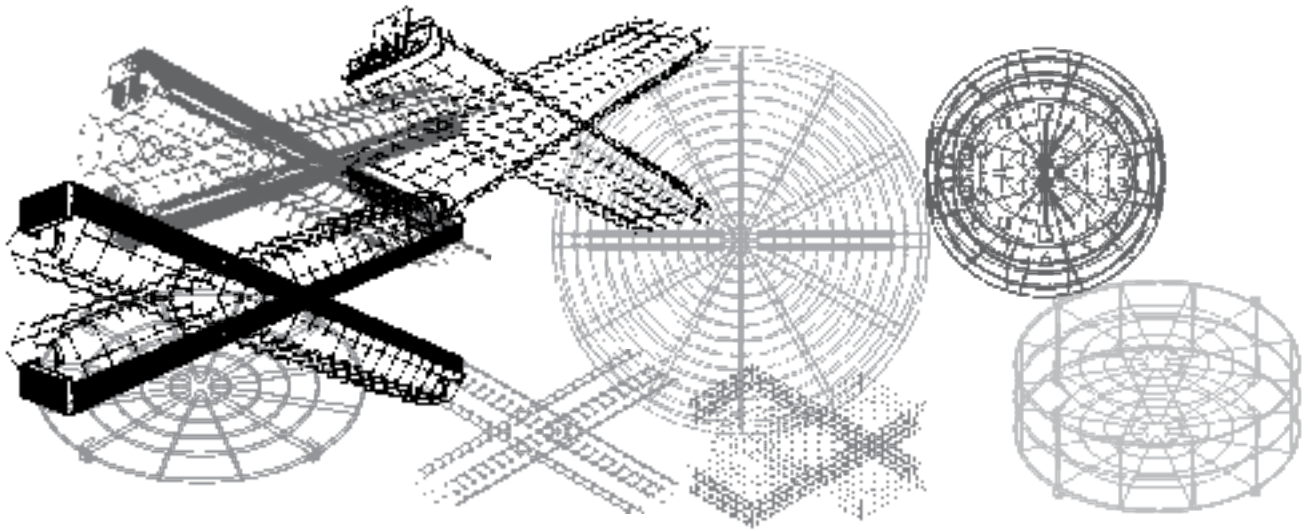
/ Heat screens /

PART #	DESCRIPTION	CASE QTY.
HS-12	Pre-coiled Heat Sink Screen	50

Product Description:

- * Pre-cut and pre-coiled to slip over HO & VHO lamps. Heat screens help dissipate heat and protect lamps from shattering and sleeves from melting. Not recommended for use with VHO lamps.

Wire Guards



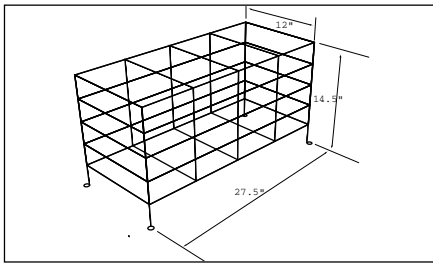
**FLUORESCENT LIGHTING
FIXTURE PROTECTION**

Product Description:

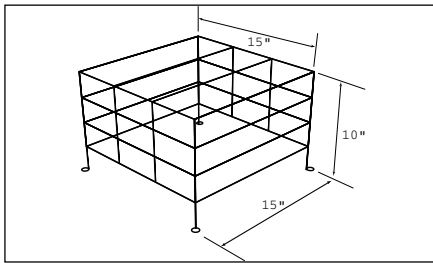
- * Wire Guard™ units offer an inexpensive way to protect light fixtures from excessive abuse.
- * Wire Guard™ units can be fabricated to fit most shapes of light fixtures. Standard sizes are in stock and ready for shipment.
- * Other applications include exit signs, clocks and emergency lighting fixtures.

/ Fluorescent lighting fixture protection /

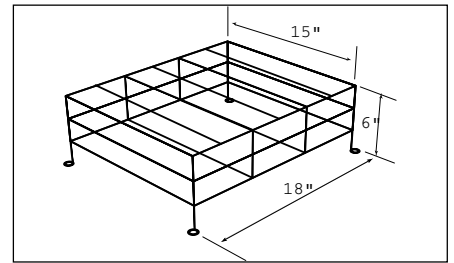
PART#	SIZE
C34-06	12" x 14 1/2" x 27 1/2"
C34-14	18" x 10" x 15"
C34-16	15" x 6" x 18"
C34-18	23" x 12" x 21"
C34-24	21" x 12" x 32"
C34-29	16" x 14" x 16"
C34-30	26" x 14" x 16"
C34-31	16" x 9" x 16"
C34-32	8" x 8" x 8"
C34-33	8" x 8" 16"
C34-34	13 3/4" x 4 3/8" x 13 3/8"
C34-35	4" x 16 3/4" x 13 5/8"
C34-36	14" x 8" x 27 1/2"
C34-38	15" x 6" x 21"



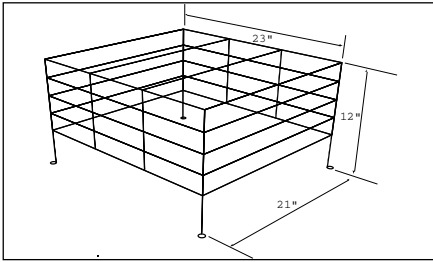
C34-06



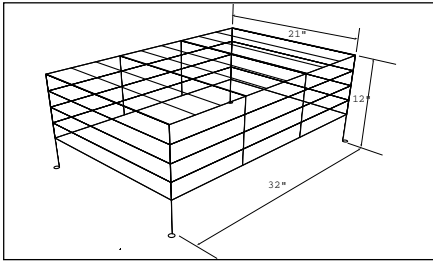
C34-14



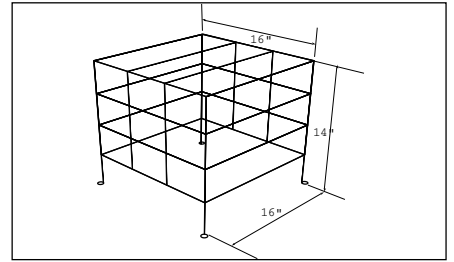
C34-16



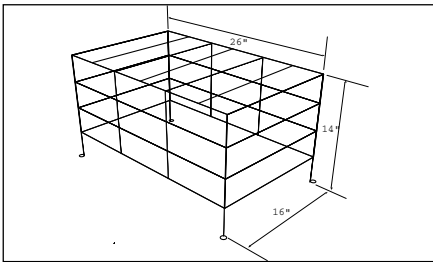
C34-18



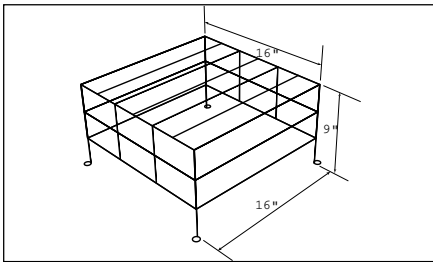
C34-24



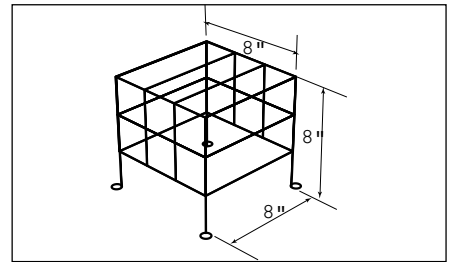
C34-29



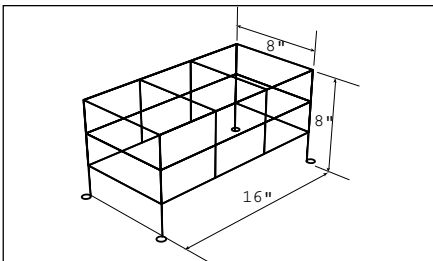
C34-30



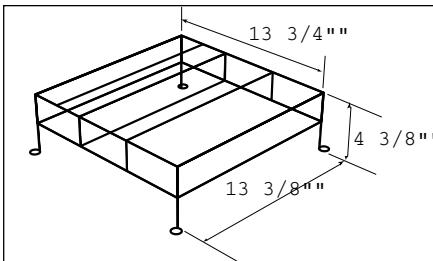
C34-31



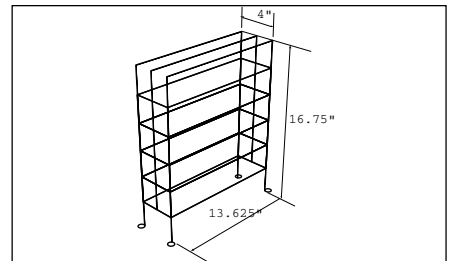
C34-32



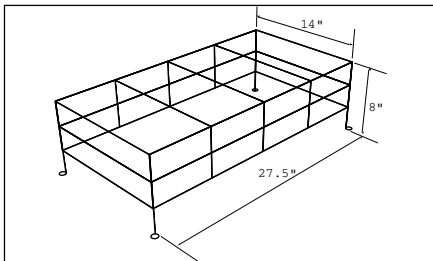
C34-33



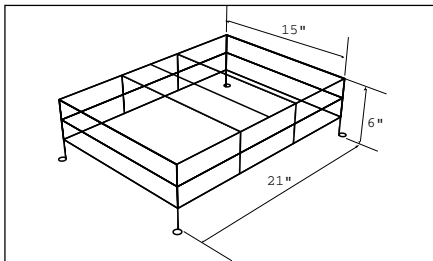
C34-34



C34-35



C34-36



C34-38

See dimensions on page 46.

Wire Guards / LGWR-Reflector Type Guard

/ LGWR-Reflector Type Guard /

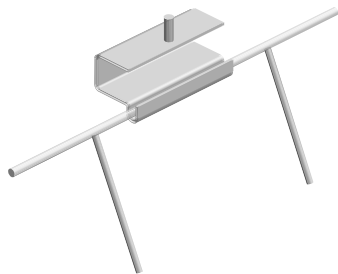
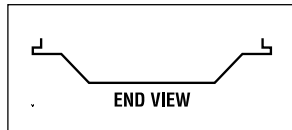
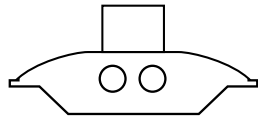
PART #	MAX REFLECTOR WIDTH	
12-LGWR-614C	10-12	[1/16 Gauge]
12-LGWR-611C	10-12	[1/8 Gauge]
14-LGWR-714C	12-14	[1/16 Gauge]
14-LGWR-711C	12-14	[1/8 Gauge]
16-LGWR-814C	14-16	[1/16 Gauge]
16-LGWR-811C	14-16	[1/8 Gauge]
18-LGWR-914C	16-18 1/2	[1/16 Gauge]
18-LGWR-911C	16-18 1/2	[1/8 Gauge]

Product Description:

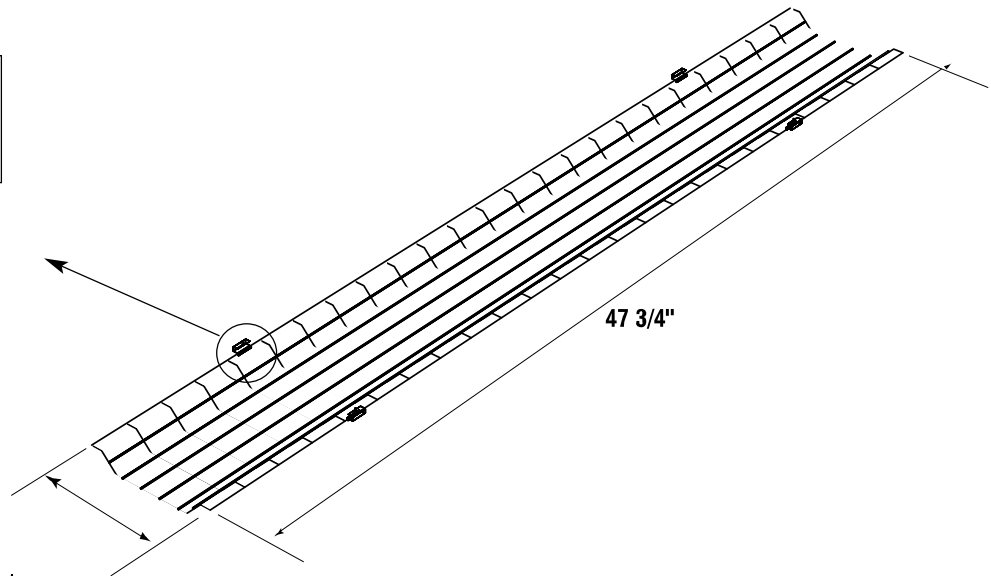
- * Reflector guards are equipped with hinge clamps are standard equipment. When measuring reflector width – take inside measurements using the reflector measuring point guide.



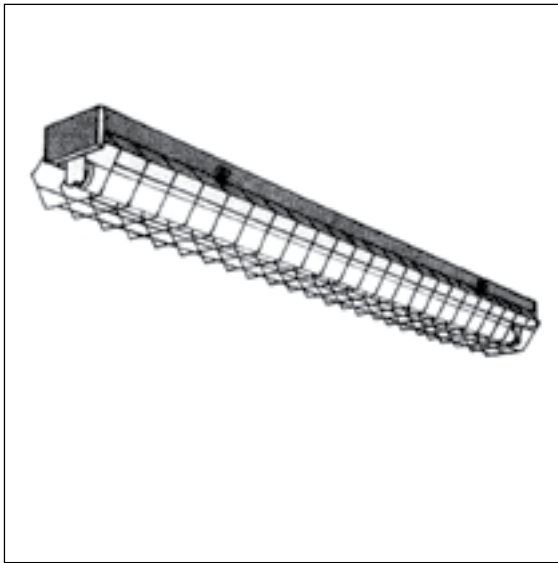
LGWR REFLECTOR TYPE GUARD



Attachment of Hinge clip



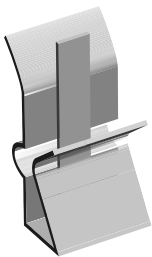
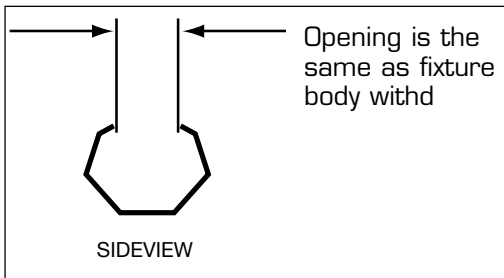
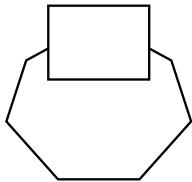
Reflector Width _____



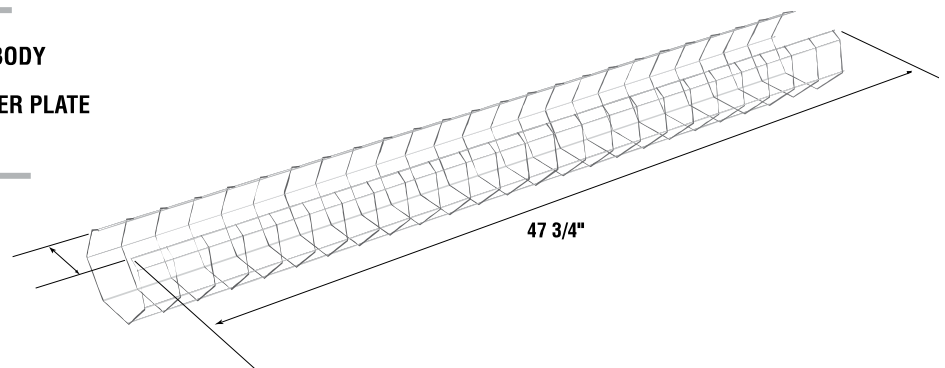
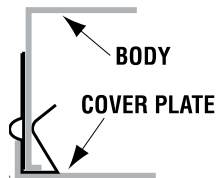
/ Strip Light Guard /

PART #	MAX REFLECTOR WIDTH
3-SLG-614C	2-3
3-SLG-611C	2-3
4-SLG-614C	3-4
4-SLG-611C	3-4
5.5-SLG-614C	4-5 1/2
5.5-SLG-611C	4-5 1/2
7.5-SLG-714C	5 1/2-7 1/2
7.5-SLG-711C	5 1/2-7 1/2
10-SLG-814C	7 1/2-10
10-SLG-811C	7 1/2-10
12-SLG-914C	10-12
12-SLG-911C	10-12

STRIP LIGHT GUARD (SLG)



Snap-on Hinge clip



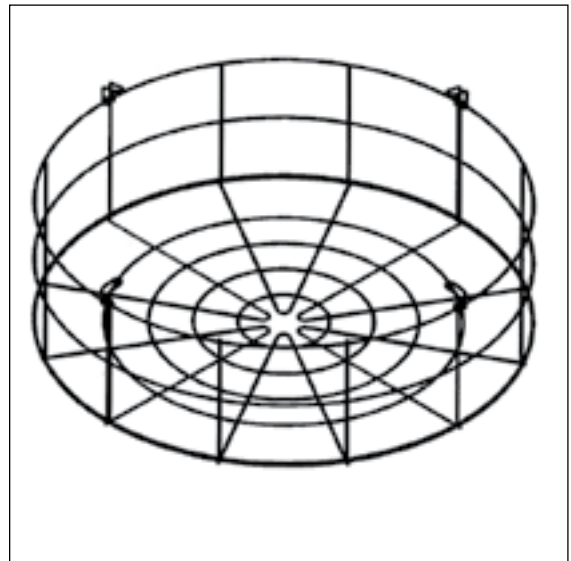
Round Bay Lite Guards

/ Low Bay Wire Guards /

PART #	DIAMETER
02-LB12	12"
02-LB13	13"
02-LB14	14"
02-LB15	15"
02-LB16	16"
02-LB17	17"
02-LB18	18"
02-LB19	19"
02-LB20	20"
02-LB21	21"
02-LB22	22"
02-LB23	23"
02-LB24	24"

Product Description:

Low Bay Wire Guards are constructed with 11 gauge tempered steel wire resistance welded. Standard sizes range from 12" to 24" diameter in 1" increments. The standard guard depth is 5" for diffuser lens clearance. Other custom sizes are available upon request. Steel hinge clamps are permanently attached for easy mounting to reflector rim. Available in powder coated epoxy and polyester chrome or white finish. Other custom colors and finishes are available on special order. Coating is moisture and weather resistant.



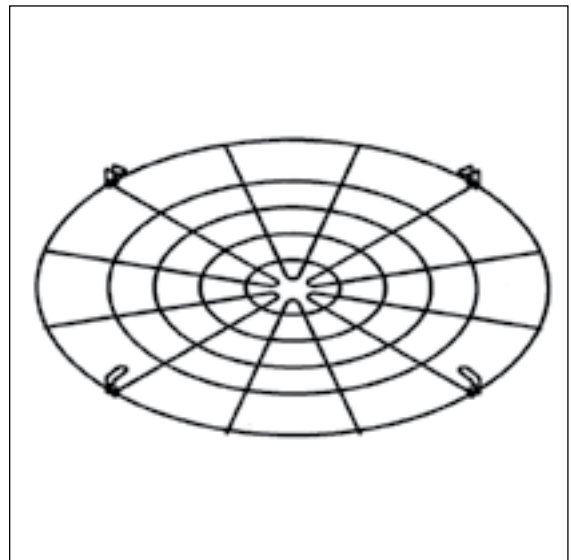
LOW BAY WIRE GUARDS

/ High Bay Wire Guards /

PART #	DIAMETER
02-HB12	12"
02-HB13	13"
02-HB14	14"
02-HB15	15"
02-HB16	16"
02-HB17	17"
02-HB18	18"
02-HB19	19"
02-HB20	20"
02-HB21	21"
02-HB22	22"
02-HB23	23"
02-HB24	24"

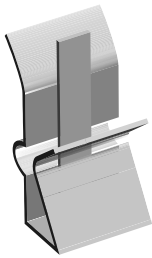
Product Description:

High Bay Wire Guards are constructed with 11 gauge tempered steel wire resistance welded. Standard sizes range from 12" to 24" diameter in 1" increments. The standard guard depth is 5" for diffuser lens clearance. Other custom sizes are available upon request. Steel hinge clamps are permanently attached for easy mounting to reflector rim. Available in powder coated epoxy and polyester chrome or white finish. Other custom colors and finishes are available on special order. Coating is moisture and weather resistant.



HIGH BAY WIRE GUARDS

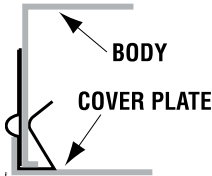
Clips



STEEL CLIP FOR STRIP FIXTURES

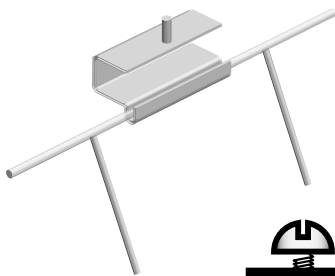
1. Slide the supplied 20 gauge tempered cold rolled hinge clips on to the strip housing per drawing. Use two clips per side placed approximately nine inches from each end.
2. Install strip cover plate and lamps.
3. Install LITE GARD fluorescent guard by inserting outside edgewire, one side at a time, into the hinge lock.

LITE GARD fluorescent guard will hinge down from either side by slightly prying on clip guides on one side of the fixture and pushing the guard edge wire up and out of the clip.



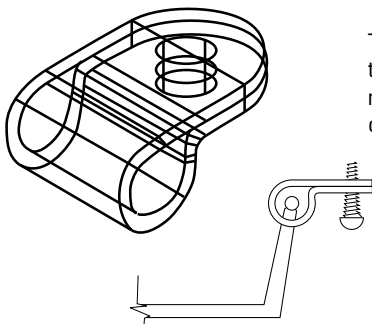
STEEL HINGE CLAMPS FOR INDUSTRIAL REFLECTORS

These clamps are bright zinc plated 20 gauge tempered cold rolled steel. Holes are tapped for the included 10-32 x 3/4" machine screws. Four hinge clamps, two per side, are permanently crimped on to the outside edge wire of the guard.



NYLON SURFACE MOUNTING HINGE CLIP

This clip is used to mount LITE GARD fluorescent guards directly to ceilings or to the sides of any fixture or reflector as per drawing. Fastening hardware (i.e. pop rivets, self tapping screws, nut and bolt, etc.) must be supplied by the user dependent upon installation requirements.



Globes

/ Globes /

PART #	DIAMETER	COLOR	MATERIAL	FITTER STYLE
ER-506	6"	C, W, BR	A, P	L, F, TH
ER-522	7.5"	C, W, BR	A, P	L, F, TH
ER-100	8"	C, W, BR	A, P	L, F, T
ER-101	10"	C, W, BR	A, P	L, F, T
ER-103	12"	C, W, BR	A, P	L, F, T
ER-104	14"	C, W, BR	A, P	L, F, T
ER-105	16"	C, W, BR	A, P	L, F, T
ER-106	18"	C, W, BR	A, P	L, F, T
ER-107	20"	C, W, BR	A, P	L, F
ER-108	22"	C, W, BR	A, P	L, F
ER-109	24"	C, W, BR	A, P	L, F

KEY

Color Code:	Material Code:	Fitter Style:
C = Clear	A = Acrylic	L = Lip Fitter Neck
W = White	P = Polycarbonate	T = Twist Lock Neck
BR = Bronze		F = Flush Hole
		TH = Threaded Neck



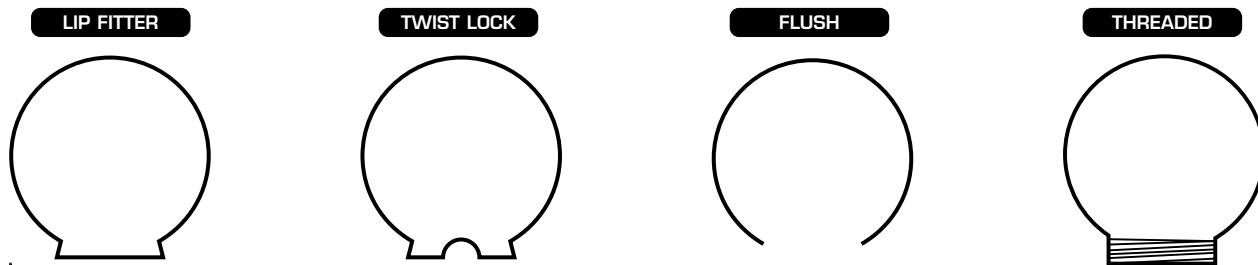
GLOBES

Other colors and materials may be available. Please consult with Plast-D-Fusers with your requirements.

Product Description:

- * Our globes are available in a variety of material to suit your application.
- * Available in sizes from 6" to 36" diameters.
- * Available in a number of different base configurations including lip fitter (L), twist lock (T), flush hole openings (F), and threaded bases (TH). **See below for examples.**
- * Standard materials include Acrylic & Polycarbonate.
- * Our globes can be used as suitable replacement parts for many current manufacturers.
- * We offer many fixture post accessories including post top fitters, heat shields and aluminum neck rings.

Base Styles:

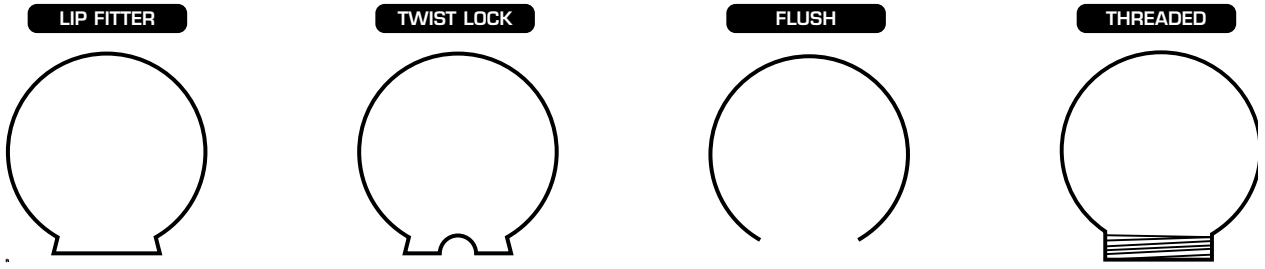


See next page for ordering guide >

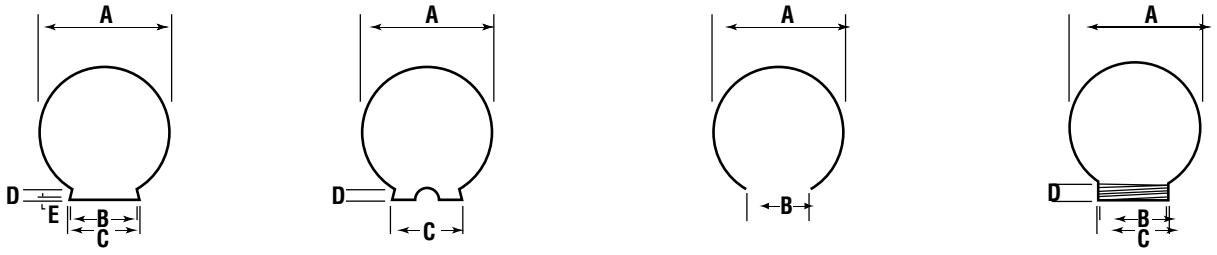
Globes: Ordering Guide

Globe Worksheet: Copy this page BEFORE filling in the information, and then fax back to us:

1. Determine which style base you have: Lip Fitter, Twist Lock, Flush or Threaded.



2. Measure the diameter of the globe ("A" measurement).
 3. For Flush Hole style globes, measure the opening indicated by "B".
 4. For Lip Fitter & Twist Lock style globes, measure the base at the point indicated by "C".



A. Diameter: _____ B. Opening: _____ C. Base: _____
(flush globes only) *(lip fitter and twist lock only)*

5. Indicate color: (circle one)

White Clear Bronze Other _____

6. Indicate material require: (circle one)

Acrylic Polycarbonate Other _____

Remember:

1. Remove hardware at globe opening to get an accurate measurement.
2. Mounting hardware is generally **NOT** included in globe prices.
3. Accessories such as Post Top Fitters, Heat Shields and Aluminum Neck Rings are available on page 61 - 62.

Cubes

/ Cubes /

PART #	W X H	COLOR	MATERIAL	FITTER STYLE
CE-20108	8" x 8"	C, W, BR, S	A	F
ER-201	8.5" x 9"	C, W, BR	A, P	L, F, T
CE-20110	10" x 10"	C, W, BR, S	A, P	F
ER-202	10 1/2" x 10 1/2"	C, W, BR	A, P	F, T
ER-203	11 1/2" x 12 1/2"	C, W, BR	A, P	F, T
ER-204	15 1/2" x 15 1/2"	C, W, BR	A, P	L, F, T
ER-205	19" x 18 1/2"	C, W, BR	A, P	L, F

KEY

Color Code:	Material Code:	Fitter Style:
C = Clear	A = Acrylic	L = Lip Fitter Neck
W = White	P = Polycarbonate	F = Flush Hole
BR = Bronze		T = Twist Lock Neck
S = Smoke		

Other colors and materials may be available.
Please consult with Plast-D-Fusers with your requirements.



CUBES



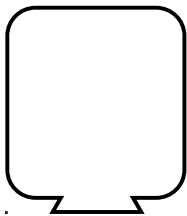
200 Series Cubes

Product Description:

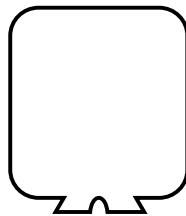
- * One piece, injection molded, U.V. stabilized, acrylic or polycarbonate cubes.
- * For post top or wall bracket mounting.
- * Available in either twist lock (T), lip fitter (L) or neckless mounting options, in a variety of sizes. **See below for examples.**

Base Styles:

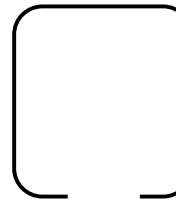
LIP FITTER



TWIST LOCK



NECKLESS

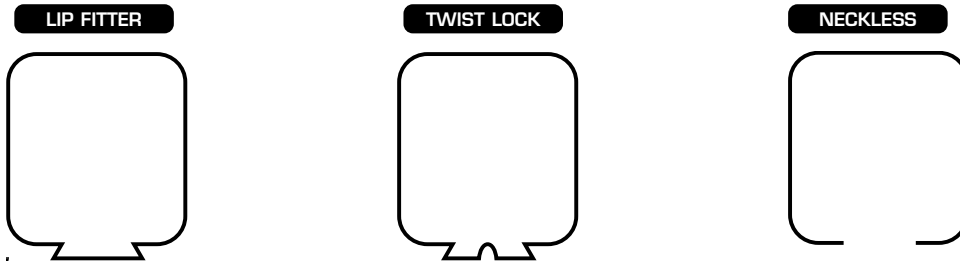


See next page for ordering guide >

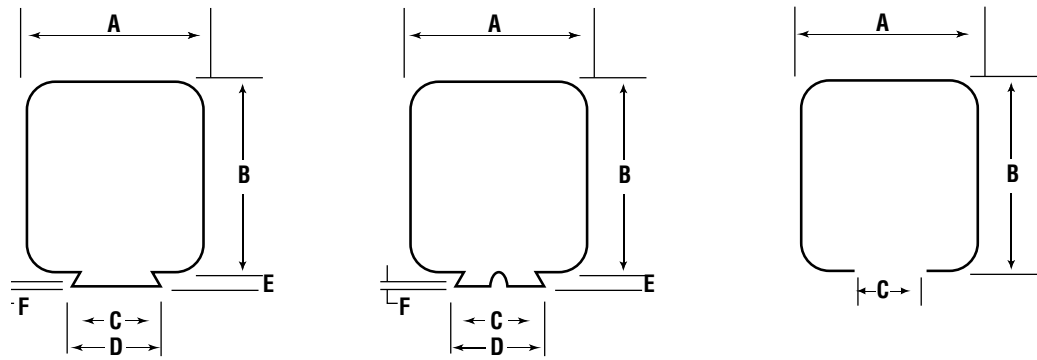
Cubes: Ordering Guide

Cube Worksheet: Copy this page BEFORE filling in the information, and then fax back to us:

1. Determine which style base you have: Lip Fitter, Twist Lock, or Neckless



2. Measure the cube as shown in the diagram at points "A", "B", "C" & "D" if applicable.



A. Diameter: _____ **B. Height:** _____ **C. Base:** _____
D. Neck: _____

3. Indicate color: (circle one)

White Clear Bronze Smoke Other _____

4. Indicate material require: (circle one)

Acrylic Polycarbonate Other _____

5. Indicate lamp type and wattage if known:

Lamp style: _____ Wattage: _____

Remember:

1. Remove hardware at globe opening to get an accurate measurement.
2. Mounting hardware is generally **NOT** included in globe prices.
3. Accessories such as Post Top Fitters, Heat Shields and Aluminum Neck Rings are available on page 61 - 62.

Ellipsoids

/ Ellipsoids /

PART #	W X H	COLOR	MATERIAL	FITTER STYLE
CE-67100	16" x 8"	C, W, BR, S	A	F
ER-602	16" x 10"	C, W, BR	A, P	F, T
CE-67200	22" x 11"	C, W, BR, S	A	F
CE-67300	26" x 13"	C, W, BR, S	A	F
CE-67400	34" x 17"	C, W, BR, S	A	F

KEY

Color Code:	Material Code:	Fitter Style:
C = Clear	A = Acrylic	F = Flush Hole
W = White	P = Polycarbonate	T = Twist Lock Neck
BR = Bronze		
S = Smoke		

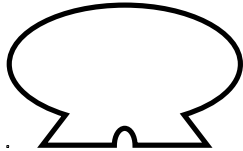


ELLIPSOIDS

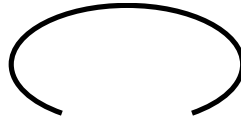
Product Description:

- * One piece, injection molded, U.V. stabilized, acrylic or polycarbonate ellipsoids.
- * For post top fixtures in both commercial and residential applications.
- * Available in either flush hole or twist lock neck mounting options, in a variety of sizes. **See below for examples.**

TWIST LOCK



FLUSH



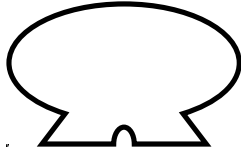
See next page for ordering guide >

Ellipsoids: Ordering Guide

Ellipsoids Worksheet: Copy this page BEFORE filling in the information, and then fax back to us:

1. Determine which style base you have: Flush or Twist Lock

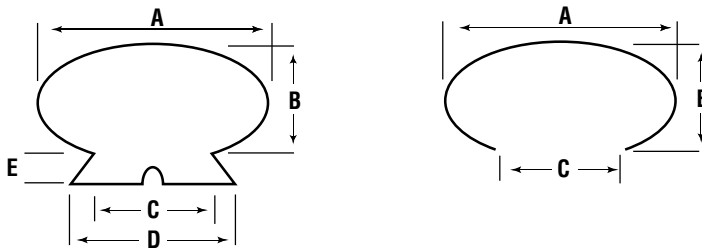
TWIST LOCK



FLUSH



2. Measure the cube as shown in the diagram at points "A", "B", "C" & "D" if applicable.



A. Diameter: _____ B. Height: _____ C. Neck: _____ D. Opening: _____
(twist lock only)

3. Indicate color: (circle one)

Clear White Bronze Smoke

4. Indicate material require: (circle one)

Acrylic Polycarbonate

5. Indicate lamp type and wattage if known:

Lamp style: _____ Wattage: _____

Round Domes

/ Round Domes /

PART #	SIZE	MAXIMUM DEPTH	MATERIAL
B50-AW100-230000	24"	2"	White Acrylic
B50-AW100-350000	36"	3"	White Acrylic
B50-AW100-470000	48"	4"	White Acrylic
Flange Style			
B51-AW187-060000	6"	2"	White Acrylic
B51-AW187-120000	12"	4"	White Acrylic
B51-AW187-180000	18"	8"	White Acrylic
B51-AW187-240000	24"	10"	White Acrylic
B51-AW187-300000	30"	12"	White Acrylic
B51-AW187-360000	36"	15"	White Acrylic
B51-AW187-480000	48"	20"	White Acrylic
Flangeless Style			
B52-AW187-060000	6"	2"	White Acrylic
B52-AW187-120000	12"	4"	White Acrylic
B52-AW187-180000	18"	8"	White Acrylic
B52-AW187-240000	24"	10"	White Acrylic
B52-AW187-300000	30"	12"	White Acrylic
B52-AW187-360000	36"	15"	White Acrylic
B52-AW187-480000	48"	20"	White Acrylic

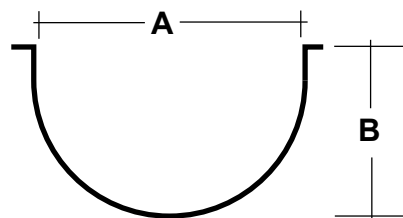


ROUND DOMES

Custom sizes, depths and materials quoted on requests. Minimum quantities and set up charges may apply. Consult Plast-D-Fusers with your requirements.

Product Description:

- * Custom molded domes in smooth white acrylic material.
- * Available with or without flanges.
- * A wide variety of widths and depths available.



Hemisphere Domes



HEMISPHERE DOMES

/ Hemisphere Domes /

PART #	W X H	COLOR	MATERIAL
CE-60108	8" x 4"	C, W, BR, S	A
CE-60110	10" x 5"	C, W, BR, S	A
CE-60112	12" x 6"	C, W, BR, S	A
CE-60114	14" x 7"	C, W, BR, S	A
CE-60116	16" x 8"	C, W, BR, S	A
CE-60118	18" x 9"	C, W, BR, S	A
CE-60120	20" x 10"	C, W, BR, S	A
CE-60122	22" x 11"	C, W, BR, S	A
CE-60124	24" x 12"	C, W, BR, S	A
CE-60127	27" x 13 1/2"	C, W, BR, S	A
CE-60130	30" x 15"	C, W, BR, S	A
CE-60136	36" x 18"	C, W, BR, S	A

KEY

Color Code:	Material Code:
C = Clear	A = Acrylic
W = White	P = Polycarbonate
BR = Bronze	
S = Smoke	

Product Description:

- * Symmetrically molded hemispheres in a wide range of sizes.
- * Molded in non-yellowing acrylic material.
- * Available finishes include clear, white, bronze, and smoke.
- * Applications include pendant hanging fixtures, post top and custom fixtures.

Street Light Ornamental Globes

/ Ornamental Globes /

PART #	COLOR	HEIGHT	WIDTH	NECK	OPENING
Globe A: Polycarbonate					
LP-88062-05-8F	Clear	24.75"	16.5"	8" Fitter	7.12"
LP-88063-05-8F	Clear	21.37"	14"	8" Fitter	7.12"
LP-88065-05-6F	Clear	16.62"	10.87"	5.94" Fitter	5.25"
LP-88066-05-9F	Clear	24.75"	16.6"	9.12" Fitter	8.12"
FP-108-C	Clear	13.13"	8.25"	4" Fitter	3.25"
FP-108-W	White	13.13"	8.25"	4" Fitter	3.25"
Globe A: Acrylic					
LP-88262-05-8F	Clear	24.75"	16.5"	8" Fitter	7.12"
LP-88263-05-8F	Clear	21.37"	14"	8" Fitter	7.12"
LP-88265-05-6F	Clear	16.62"	10.87"	5.94" Fitter	5.25"
LP-88266-05-9F	Clear	24.75"	16.6"	9.12" Fitter	8.12"
Globe B: Polycarbonate					
LP-88064-05-8F	Clear	23.25"	15.25"	8" Fitter	7.12"
Globe B: Acrylic					
LP-88264-05-8F	Clear	23.25"	15.25"	8" Fitter	7.12"
Globe C: Polycarbonate					
LP-88060-05-8F	Clear	20"	15.87"	8" Fitter	7.12"
LP-88060-05-9F	Clear	20"	15.87"	9.12" Fitter	8.12"
LP-88061-05-8F	Clear	17.75"	13.12"	8" Fitter	7.12"
Globe C: Acrylic					
LP-88260-05-8F	Clear	20"	15.87"	8" Fitter	7.12"
LP-88260-05-9F	Clear	20"	15.87"	9.12" Fitter	8.12"
LP-88261-05-8F	Clear	17.75"	13.12"	8" Fitter	7.12"

Additional sizes are available. Please call for quotation.

Product Description:

- * Street light ornamental globes offer distinctive styling.
- * Molded in acrylic for globes of non-yellowing usage or polycarbonate for high abuse areas.
- * A variety of shapes, sizes, and fitter options available.



GLOBE A



GLOBE B



GLOBE C

Threaded Jars



Product Description:

- * Polycarbonate construction with threaded base provides an ideal replacement for glass jars.
- * Jars are stocked in window clear, lineal prismatic and white. Optional colors are amber, blue, green, orange and red.
- * Jars are available in a variety of lengths to accommodate various sizes of incandescent and PL style lamps.

THREADED JARS

PART #	DESCRIPTION	COLOR	HEIGHT	NECK	MATERIAL
JAR-CP-6	6" Threaded Flat Top Prism	Clear	6"	3 1/4" Threaded	Polycarb
JAR-CS-6	6" Threaded Flat Top Smooth	Clear	6"	3 1/4" Threaded	Polycarb
JAR-WP-6	6" Threaded Flat Top Prism	White	6"	3 1/4" Threaded	Polycarb
JAR-WS-6	6" Threaded Flat Top Smooth	White	6"	3 1/4" Threaded	Polycarb
JAR-G	6" Threaded Flat Top Glass	White	6"	3 1/4" Threaded	Glass

ER-507/A-PC	6" Threaded Round Top	Amber	6"	3 1/4" Threaded	Polycarb
ER-507/B-PC	6" Threaded Round Top	Blue	6"	3 1/4" Threaded	Polycarb
ER-507/R-PC	6" Threaded Round Top	Red	6"	3 1/4" Threaded	Polycarb
ER-507-PC	6" Threaded Round Top	Clear	6"	3 1/4" Threaded	Polycarb

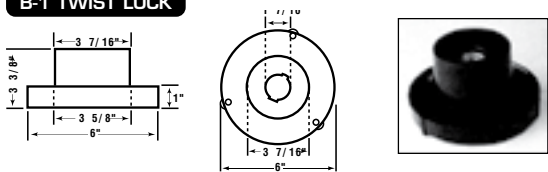
JAR-CP-7	7" Threaded Round Top Prism	Clear	7"	3 1/4" Threaded	Polycarb
JAR-WP-7	7" Threaded Round Top Prism	White	7"	3 1/4" Threaded	Polycarb
JAR-WS-7	7" Threaded Round Top Smooth	White	7"	3 1/4" Threaded	Polycarb

JAR-CP-8	8" Threaded Round Top Prism	Clear	8"	3 1/4" Threaded	Polycarb
JAR-WP-8	8" Threaded Round Top Prism	White	8"	3 1/4" Threaded	Polycarb
JAR-WS-8	8" Threaded Round Top Smooth	White	8"	3 1/4" Threaded	Polycarb

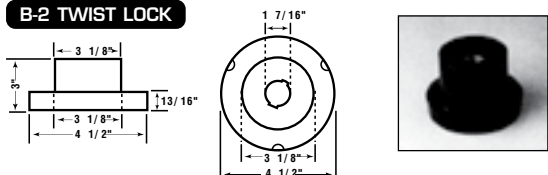
PAR-GL-528-W	8 1/4" Threaded Flat Top Smooth	White	8 1/4"	4.17" Threaded	Polycarb
PAR-GL-528-C	8 1/4" Threaded Flat Top Smooth	Clear	8 1/4"	4.17" Threaded	Polycarb

Globe Accessories

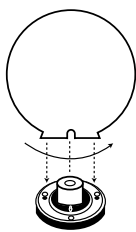
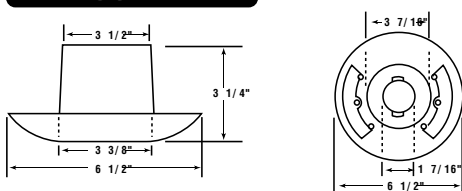
B-1 TWIST LOCK



B-2 TWIST LOCK



B-4 WING CLAMP FITTER



Twist lock mechanism

POST TOP FITTER

Application: Replace missing or damaged clamping hardware

- * One piece injection molded, U.V. stabilized polycarbonate.
- * Fits standard 3" pole and can accommodate a 2" pole with special ordered adapter.
- * Spring loaded with wing clamps to hold a globe with a 5 1/4" opening.
- * Available in black and white (green and bronze may be special ordered).

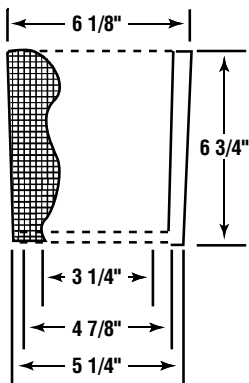
Post Top fitters come pre-wired with the following sockets:

- * Recessed Snap-in 4KV Pulse Rated / 660W 600V socket (for incandescent and HID lamps)
- * PL Sockets
- * HID 35-70 watt
- * Mogul Base Sockets

Ordering Information:

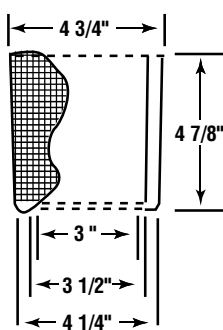
PART #	DESCRIPTION
B-1	Twist Lock
B-2	Twist Lock
B-4	Wing Clamp Fitter (specify socket requirements)

L-3 & L-5



4 1/4" Bottom opening Special order; call Plast-D-Fusers.

S-5



2" Bottom opening Special order; call Plast-D-Fusers.

BOROSILICATE GLASS REFRACTOR

Application: Reduce glare, improve and control light distribution

- * One piece molded prismatic glass refractor.
- * Low expansion, high resistance to heat and thermal shock.
- * Fluted to directionally distribute light and reduce glare.
- * Available in in Type V (360 degree) and Type III (180 degree).

Ordering Information:

PART #	DESCRIPTION
ER-L3	Type III distribution
ER-L5	Type V distribution
S-5	Type V distribution

/ Aluminum Neck Rings /

PART #	MATERIAL	OUTSIDE DIAMETER	INSIDE DIAMETER
LP-98003-A	ALUMINUM	3.00"	2.62"
LP-98004-A	ALUMINUM	3.87"	3.37"
LP-98005-A	ALUMINUM	5.00"	3.25"
LP-98006-P	PLASTIC	6.00"	4.18"
LP-98007-A	ALUMINUM	7.00"	5.37"
LP-98008-P	PLASTIC	8.00"	6.37"
LP-98009-A	ALUMINUM	9.00"	7.12"
LP-98010-A	ALUMINUM	10.00"	8.25"



ALUMINUM NECK RINGS

Application: *For globes that require neck rings for screw in base.*

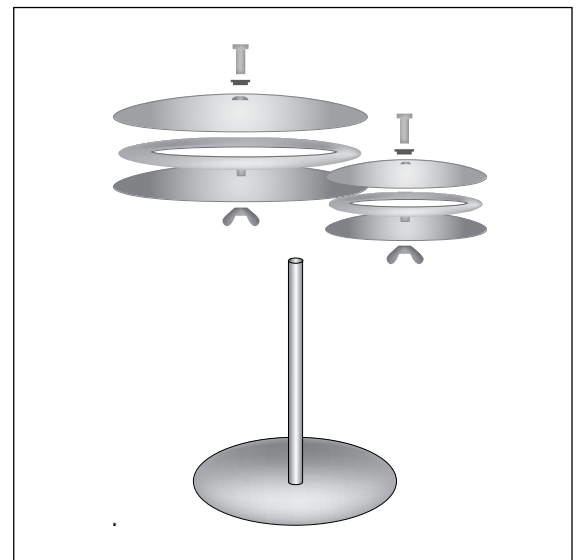
- * Aluminum neck rings are available in a number of sizes to meet your needs.
- * Neck rings are riveted onto globes for secure fit.

/ Aluminum Heat Shields /

PART #	DESCRIPTION
LP-96000-A	External mounted two piece
LP-96100	Internal mounted disk

Application: *Heat shields help prolong the life of the globe by deflecting and dissipating heat.*

- * External and internal mounted disks available.
- * Aluminum material provides long lasting performance.
- * Helps prolong the life of the globe.
- * Helps to prevent unwanted up light or light pollution.



ALUMINUM HEAT SHIELDS

Globes

RECOMMENDED MAXIMUM WATTAGE

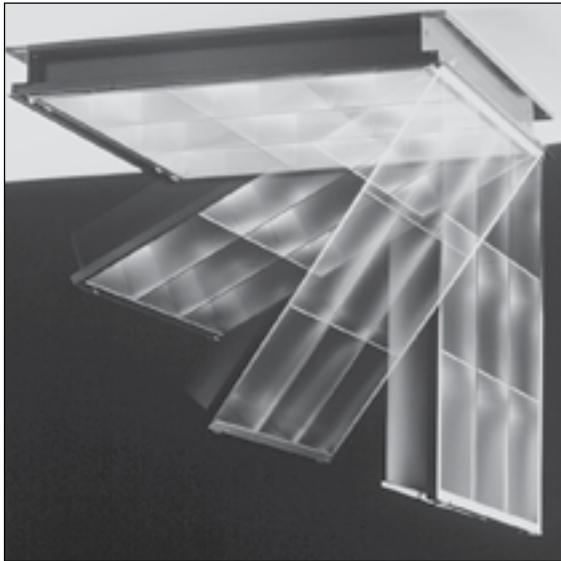
(SEE WARNING AND NOTES (1), (2), & (3) BELOW)

GLOBE SIZE/INCHES	ACRYLIC - MATERIAL			POLYCARBONATE - MATERIAL		
	INCANDESCENT	FLUORESCENT	HID (1)	INCANDESCENT	FLUORESCENT	HID (1)
6" (3)	60W	PL5 - PL13 Quad 5 - Quad 13	35W	75W	PL5 - PL13 Quad 5 - Quad 13	50W
8"	75W	PL5 - PL13 Quad 5 - Quad 28	50W	100W	PL5 - PL13 Quad 5 - Quad 28	50W
10"	100W	PL5 - PL13 Quad 5 - Quad 28	50W	150W	PL5 - PL13 Quad 5 - Quad 28	70W
11"	100W	PL5 - PL13 Quad 5 - Quad 28	50W	150W	PL5 - PL13 Quad 5 - Quad 28	70W
12"	150W	PL5 - PL13 Quad 5 - Quad 28	50W	200W	PL5 - PL13 Quad 5 - Quad 28	100W
14"	150W	PL5 - PL13 Quad 5 - Quad 28	75W (2)	200W	PL5 - PL13 Quad 5 - Quad 28	100W (2)
16"	200W	PL5 - PL13 Quad 5 - Quad 28	100W (2)	300W	PL5 - PL13 Quad 5 - Quad 28	175W (2)
18"	200W	PL5 - PL13 Quad 5 - Quad 28	175W (2)	300W	PL5 - PL13 Quad 5 - Quad 28	250W
20"	300W	PL5 - PL13 Quad 5 - Quad 28	175W (2)	400W	PL5 - PL13 Quad 5 - Quad 28	250W
21"	300W	PL5 - PL13 Quad 5 - Quad 28	175W (2)	500W	PL5 - PL13 Quad 5 - Quad 28	250W
22"	300W	PL5 - PL13 Quad 5 - Quad 28	175W (2)	500W	PL5 - PL13 Quad 5 - Quad 28	250W
24"	300W	PL5 - PL13 Quad 5 - Quad 28	200W (2)	750W (2)	PL5 - PL13 Quad 5 - Quad 28	400W (2)

WARNING: This is a recommendation only and no warranty or guarantee is expressed or implied as only the user can determine product suitability for a specific purpose. Actual wattage ratings are influenced by many factors including: fixture type, bulb location and ambient temperature. The center of the light source should be located at the center of the globe. CUSTOMERS SHOULD CONDUCT THEIR OWN MAXIMUM WATTAGE TESTS ON EACH APPLICATION AND DETERMINE THEIR OWN MAXIMUM WATTAGE.

- NOTES: (1) HID includes: Mercury vapor, metal halide and high pressure sodium.
 (2) Installation of a heat shield in a sphere will allow an increase of 50 watts in the light source beyond the recommended wattage.
 (3) Series 505 Acrylic Globes are rated at 40 Watts Maximum.

Miscellaneous / Door Frames and Accessories



RFK3 3" PARABOLIC RETROFIT KIT

/ RFK3 3" Parabolic Retrofit Kit /

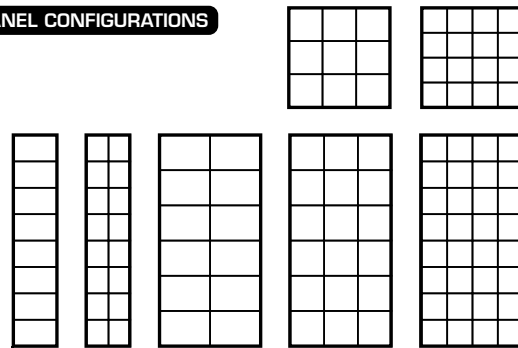
PART #	DESCRIPTION	STANDARD SIZE
RFK3	Deep Cell Retrofit Kit	1' x 4'
RFK3	Deep Cell Retrofit Kit	2' x 2'
RFK3	Deep Cell Retrofit Kit	2' x 4'

Additional sizes are available. Please call for quotation.

Product Description:

- * Deep Cell Parabolic Retrofit Kit.
- * Wide variety of cell configurations.
- * Installs easily onto grid ceiling applications.

RFK PANEL CONFIGURATIONS



RDF REPLACEMENT DOOR FRAME

/ RDF Replacement Door Frame/

PART #	DESCRIPTION	COLOR	STANDARD SIZE
RDF-1448	1' x 4' Door Frame	White	11 3/4" x 47 3/4"
RDF-2424	2' x 2' Door Frame	White	23 3/4" x 23 3/4"
RDF-2448	2' x 4' Door Frame	White	23 3/4" x 47 3/4"

Other sizes are available on special order basis. Please call for quotation.

Product Description:

- * Sturdy white steel frame and hinged door assembly install easily onto any suspended grid ceiling, regardless of fixture manufacturer.
- * Door frame can be fitted with any style lens or louver.
- * Ideal for applications where original fixtures never had door frames, or where frames are missing, damaged or no longer available.

Miscellaneous / Vandal Lens

/ Vandal Lens - Lensgard Assemblies /

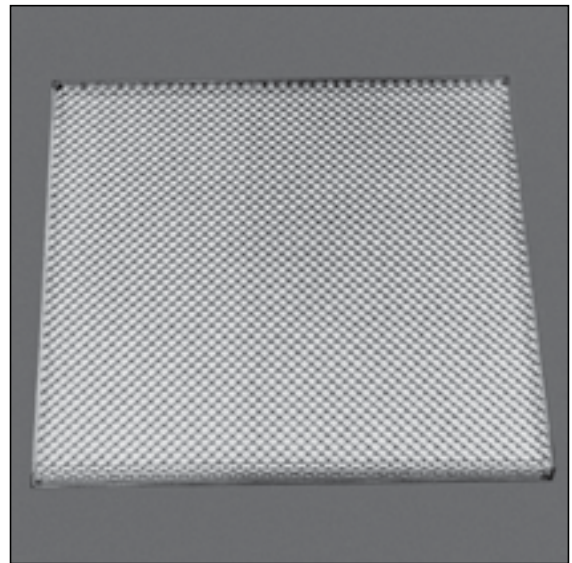
PART#	DESCRIPTION	COLOR	SIZE
X21-PA250-237477	.250 Lensguard	Clear	23 3/4" x 47 3/4"
X21-PA375-237477	.375 Lensguard	Clear	23 3/4" x 47 3/4"

LENSGARD® assemblies can be manufactured to specified dimensions up to 4' x 4'.

Product Description:

- * Composite lens consisting of a prismatic acrylic lens and a protective polycarbonate shielding. The perimeter of the lens is sealed by a specially designed channel which is chemically welded.
- * Designed for area where vandalism or accidental damage may be a problem. It is used in different applications such as school gymnasiums, racquet ball courts, psychiatric wards, detention facilities, public areas, etc.

PROFILE



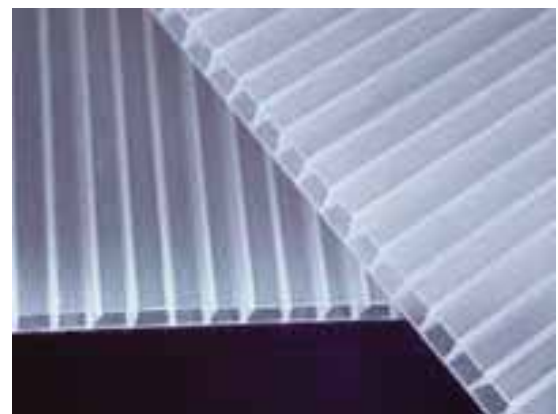
VANDAL LENS - LENSgard® ASSEMBLIES

/ Twin Wall Polycarbonate /

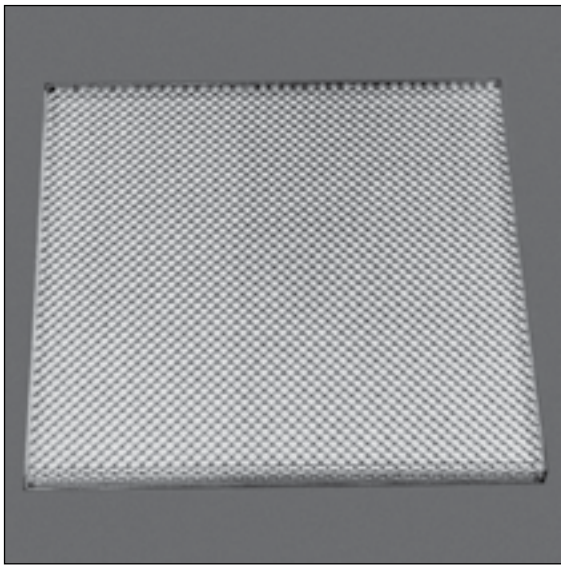
PART#	DESCRIPTION	COLOR	SIZE
POLYGAL 6MM TW	6MM Twin Wall Polycarbonate	White	48" x 100"
POLYGAL 6MM TWX	6MM Twin Wall Polycarbonate	White	72" x 102"

Product Description:

- * Twin Wall Polycarbonate sheets provide superior strength, light transmission, flexibility and weather resistance characteristics.
- * Twin wall corrugated polycarbonate plastic gives thermal insulating values while blocking UV transmission.
- * Virtually unbreakable, light in weight, yet 8 times stronger than acrylic.
- * Flame retardant, melts with igniting. Will not support combustion or spread flames. CC-1 Fire Rating per ASTM D635
- * Recommended applications include areas where vandalism may occur or to meet fire codes in elevator applications.
- * Stocked in clear, opal white & bronze. Other colors available.



TWIN WALL POLYCARBONATE



VANDAL LENS - POLYGARD® ASSEMBLIES

/ Vandal Lens - Polygard Assemblies/

PART #	DESCRIPTION	COLOR	SIZE
X21-2P-250	.250 2 Ply Polycarbonate	Clear	23 3/4" x 47 3/4"
X21-3P-375	.375 3 Ply Polycarbonate	Clear	23 3/4" x 47 3/4"
X21-3P-500	.500 3 Ply Polycarbonate	Clear	23 3/4" x 47 3/4"

POLYGARD® assemblies can be manufactured to specified dimensions up to 4' x 4'.

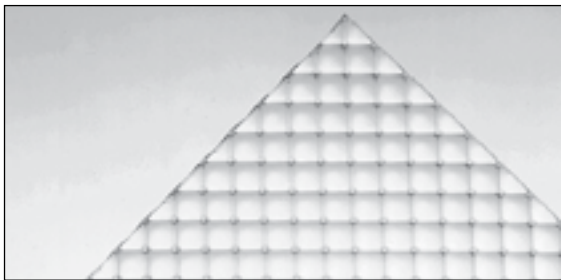
Product Description:

- * Composite lens consisting of a multi-ply polycarbonate prismatic lens and a protective polycarbonate shielding. Chemically welded perimeter channel seals lens.
- * Two ply or optional three ply laminates provide a full range of selection for security areas.
- * Applications include maximum security areas, which have the most stringent requirements imposed by correctional facilities.

PROFILE - 2 ply



PROFILE - 3 ply



VANDAL LENS - PS21PC POLYCARBONATE

/ Vandal Lens - PS21PC Polycarbonate /

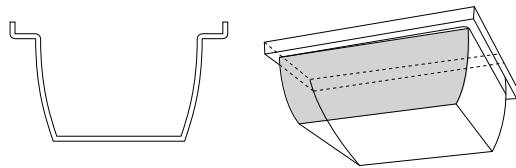
PART #	DESCRIPTION	COLOR	SIZE
PS21-PC125-24	.125 Polycarbonate	Clear	23 3/4" x 47 3/4"
PS21-PC125-44	.125 Polycarbonate	Clear	50" x 50"
PS21-PC125-44	.125 Polycarbonate	Clear	47 3/4" x 47 3/4"
PS21-PC187-44	.187 Polycarbonate	Clear	47 3/4" x 47 3/4"
PS21-PC-XX	Custom sizes available - call Plast-D-Fusers with requirements.		

Product Description:

- * Virtually indestructible material, suitable for applications where impact strength is of major concern such as security lighting, vandal fixtures, prisons, sport courts, outdoor lighting, etc.

Product Description:

- * Injection molded or pressure formed in clear and white polycarbonate and acrylic.
- * Multi-pattern diffuser with ultra-violet inhibitors to minimize discoloration.
- * Many shapes and styles to accommodate incandescent, fluorescent, PL and HID type lamps.
- * Complete assemblies are available including diffuser, housing, gasket and sockets.
- * Applications include correctional facilities, recreation areas, institutions, schools and other public areas.
- * Replacement parts for manufacturers such as Kenall, Failsafe, Harris and others.



**VANDAL LENS - MOLDED
POLYCARBONATE AND ACRYLIC**

/ Vandal Lens - Molded Polycarbonate and Acrylic /

PART #	WIDTH	LENGTH	HEIGHT	COLOR	MATERIAL
V-58-CP	5 1/4"	7 5/8"	4"	Clear	Polycarbonate
V-58-WP	5 1/4"	7 5/8"	4"	Clear	Polycarbonate
CV-100-CP	5 5/8"	7 7/8"	4 1/8"	Clear	Polycarbonate
CV-100-WP	5 5/8"	7 7/8"	4 1/8"	White	Polycarbonate
HA-300-C	5 3/4"	8 3/4"	4 3/4"	Clear	Polycarbonate
HA-300-W	5 3/4"	8 3/4"	4 3/4"	White	Polycarbonate
K-3700	5 7/8"	8 1/2"	4 1/8"	Clear	Polycarbonate
F43-A-060105	6"	10 1/2"	4"	Clear	Acrylic
F43-PC-060105	6"	10 1/2"	4"	Clear	Polycarbonate
CV-200-CP	8 5/8"	8 5/8"	4 1/2"	Clear	Polycarbonate
CV-200-WP	8 5/8"	8 5/8"	4 1/2"	White	Polycarbonate
F43-A-105105	10 1/2"	10 1/2"	4"	Clear	Acrylic
F43-PC-105105	10 1/2"	10 1/2"	4"	Clear	Polycarbonate
CV-300-CP	12"	12"	5 1/4"	Clear	Polycarbonate
CV-300-WP	12"	12"	5 1/4"	White	Polycarbonate

F44-048-510	4 7/8"	51"	4 3/4"	Clear	Polycarbonate
F44-095-270	9 1/2"	27"	3 1/4"	Clear	Polycarbonate
F44-092-510	9 1/2"	51"	3 1/4"	Clear	Polycarbonate

CV-800-CP-2	8 1/4"	26 1/4"	3 1/2"	Clear	Polycarbonate
CV-800-CP-4	8 1/4"	50 1/4"	3 1/2"	Clear	Polycarbonate

**Additional sizes are available. Please call or fax in your requirements.
Minimum quantities may apply to some parts.**

Miscellaneous / String Of Lights**STRING OF LIGHTS & CAGE****/ String Of Lights /**

PART#	DESCRIPTION	VOLTS/WATTS	CORD	COLOR	PACKAGE
TL-100-SJW	Incandescent 100' 10 socket w/Dome Guard	120/150	14/2	Yellow/Black	Qty 1
BC-200	Plastic (bird) Cage For String Of Lights, Dome Guard			Yellow	Qty 1 / 100

Product Description:

- * Meets OSHA requirements.
- * Non-corrosive cage design.
- * Accommodates up to 150 watt bulbs.
- * Easy relamping feature.
- * Weather-resistant sockets.

Miscellaneous / LED Emergency Lighting & Exit Signs



LED EXIT SIGNS

- Completely self contained
- Push to test switch
- LED lamp life of 25 years plus
- 120 or 277 VAC operation
- Universal mounting canopy
- Energy consumption of less than 4 watts for red
- Damp location rated
- Standard AC and emergency units available



COMBO LED EXIT/EMERGENCY LIGHTS

- Completely self contained
- Push to test switch
- LED lamp life of 25 years plus
- Universal transformer for 120 or 277 VAC
- Universal mounting canopy
- Energy consumption of less than 4 watts for red
- Standard AC and emergency units available
- 6-Volt pure lead maintenance free battery
- Standard with two fully adjustable, glare free lighting heads



EMERGENCY LIGHTING UNIT

- Completely self contained
- Push to test switch
- Available with remote capability
- 6-Volt pure lead maintenance free battery
- Universal transformer for 120 or 277 VAC
- Universal mounting plate with "EZ Quick" connection

BATTERIES AVAILABLE.

CALL FOR MORE INFORMATION. PLEASE SPECIFY AMP HOURS, VOLTAGE AND DIMENSIONS.



Long Life Light Bulbs

Import & Major Brand

Ballasts

Fluorescent & HID



A-15 Fan and Appliance

WATTS	ORDER CODE	VOLTS	INNER CARTON	MASTER CARTON	FINISH
25	25A15CL	130	25	250	Clear
	25A15FR	130	25	250	Frost
40	40A15CL	130	25	250	Clear
	40A15FR	130	25	250	Frost
60	60A15CL	130	25	250	Clear
	60A15FR	130	25	250	Frost



A-15

A-19 Standard Household

WATTS	ORDER CODE	VOLTS	INNER CARTON	MASTER CARTON	FINISH
25	25A19CL	130	4	120	Clear
	25A19FR	130	4	120	Frost
40	40A19CL	130	4	120	Clear
	40A19FR	130	4	120	Frost
60	60A19CL	130	4	120	Clear
	60A19FR	130	4	120	Frost
75	75A19CL	130	4	120	Clear
	75A19FR	130	4	120	Frost
100	100A19CL	130	4	120	Clear
	100A19FR	130	4	120	Frost



A-19

Tubular/Exit Sign

WATTS	ORDER CODE	VOLTS	INNER CARTON	MASTER CARTON	BASE	FINISH
15	15T6CL	145	25	500	Candelabra(E12)	Clear
20	20T6 1/2 CL DC	130	25	500	D.C. Bayonette	Clear
	20T6 1/2 FR DC	130	25	500	D.C. Bayonette	Frost
	20T6 1/2/N/CL	130	25	500	Intermediate (E17)	Clear
	20T6 1/2/N/FR	130	25	500	Intermediate (E17)	Frost



T6 1/2

Reflectors - Accent and Small Track

WATTS	ORDER CODE	VOLTS	INNER CARTON	MASTER CARTON	BEAM TYPE
30	30R20/FL	130	25	250	Flood
45	45R20/FL	130	25	250	Flood



R-20

Reflectors - Indoor Floods

WATTS	ORDER CODE	VOLTS	INNER CARTON	MASTER CARTON	BEAM TYPE
65	65BR30/FL	130	12	60	Flood
	65BR40/FL	130	12	24	Flood



BR-30



BR-40

Halogen Par Lamps - Specify Import or Major Brand (indoor/outdoor)

WATTS	ORDER CODE	VOLTS	INNER CARTON	MASTER CARTON	BEAM ANGLE
PAR 20					
50	50PAR20NFL (Import)	130	15	Narrow Flood	28°
50	50PAR20NFL (Major Brand)	130	15	Narrow Flood	28°
PAR 30					
50	50PAR30NFL (Import)	130	15	Narrow Flood	26°
50	50PAR30NFL (Major Brand)	130	15	Narrow Flood	26°
50	50PAR30FL (Import)	130	15	Flood	36°
50	50PAR30FL (Major Brand)	130	15	Flood	36°
50	50PAR30FL/LN (Import)	130	15	Flood Long Neck	36°
50	50PAR30FL/LN (Major Brand)	130	15	Flood Long Neck	36°
75	75PAR30NFL (Import)	130	15	Narrow Flood	26°
75	75PAR30NFL (Major Brand)	130	15	Narrow Flood	26°
75	75PAR30FL (Import)	130	15	Flood	36°
75	75PAR30FL (Major Brand)	130	15	Flood	36°
75	75PAR30FL/LN (Import)	130	15	Flood Long Neck	36°
75	75PAR30FL/LN (Major Brand)	130	15	Flood Long Neck	36°
PAR 38					
45	45PAR38FL (Major Brand)	130	12	Flood	32°
65	60PAR38FL (Major Brand)	130	12	Flood	32°
90	90PAR38FL (Import)	130	12	Flood	32°
90	90PAR38FL (Major Brand)	130	12	Flood	32°



PAR 20



PAR 30



PAR 38

MR16 - Specify Import or Major Brand

WATTS	ORDER CODE	VOLTS	INNER CARTON	MASTER CARTON	BEAM ANGLE
20	MR16BAB (Import)	12	10	Flood	36°
	MR16BAB (Major Brand)	12	10	Flood	36°
50	MR16EXN (Import)	12	10	Flood	38°
	MR16EXN (Major Brand)	12	10	Flood	38°



MR16

Halogen - J Type

WATTS	ORDER CODE	LAMP TYPE	VOLTS	BASE
100	J150	100T3Q/CL 78MM	130	Recessed Single Contact
150	J300	150T3Q/CL 78MM	130	Recessed Single Contact
300	J500	300T3Q/CL	130	Recessed Single Contact
500	J1000	500T3Q/CL	240	Recessed Single Contact
1500	J1500	1500T3Q/CL	277	Recessed Single Contact



J Type

Fluorescents - Specify Import or Major Brand



WATTS	ORDER CODE	BULB TYPE	MASTER CARTON	COLOR	RATED HOURS
LINEAR FLUORESCENT T5					
8	F8T5CW	T-5	10	Cool White	20000
13	F13T5CW	T-5	25	Cool White	20000
HIGH OUTPUT LINEAR FLUORESCENT T5					
24	F24T5/841/HO	T-5	40	4100k	20000
39	F39T5/841/HO	T-5	40	4100k	20000
54	F54T5/835/HO	T-5	40	3500k	20000
	F54T5/841/HO	T-5	40	4100k	20000
	F54T5/850/HO	T-5	40	5000k	20000
FLUORESCENT T8					
15	F15T8CW	T-8	30	Cool White	20000
17	F17T8/735	T-8	30	3500k	20000
	F17T8/741	T-8	30	4100k	20000
	F17T8/750	T-8	30	5000k	20000
25	F25T8/735	T-8	30	3500k	20000
	F25T8/741	T-8	30	4100k	20000
	F25T8/750	T-8	30	5000k	20000
32	F32T8/730	T-8	30	3000k	20000
	F32T8/735	T-8 (Import)	30	3500k	20000
	F32T8/735	T-8 (Major Brand)	30	3500k	20000
	F32T8/741	T-8 (Import)	30	4100k	20000
	F32T8/741	T-8 (Major Brand)	30	4100k	20000
	F32T8/750	T-8 (Major Brand)	30	5000k	20000
	F32T8/765	T-8 (Major Brand)	30	6500k	20000
	F32T8/835	T-8 (Major Brand)	30	3500k	20000
	F32T8/850	T-8 (Import)	30	5000k	20000
	F32T8/850HL	T-8 (Major Brand)	30	5000k	20000
59	F96T8/741	T-8 (Major Brand)	24	4100k	15000
	F96T8/850	T-8 (Major Brand)	24	5000K	15000
FLUORESCENT T8 U BENT					
31	FB31T8/835	T-8 1 5/8" Spacing	15	3500k	20000
	FB31T8/841	T-8 1 5/8" Spacing	15	4100k	20000
32	FB32T8/735	T-8 6" Spacing	15	3500k	20000
	FB32T8/741	T-8 6" Spacing	15	4100k	20000

Fluorescents - Specify Import or Major Brand

WATTS	BULB TYPE	ORDER CODE	MASTER CARTON	COLOR	RATED HOURS
FLUORESCENT T12					
15	T-12	F15T12CW	30	Cool White	9000
20	T-12	F20T12CW	30	Cool White	9000
30	T-12	F30T12CW	30	Cool White	18000
34	T-12	F34T12CW	30	Cool White	20000
40	T-12	F40T12/DX	30	Daylight	20000
40	T-12	F40T12/CWX	30	Cool White Deluxe	20000
55	T-12	F72TCW	15	Cool White	12000
85	T-12	F72T12CWHO	15	Cool White/High Output	20000
75	T-12	F96T12CW	15	Cool White	12000
95	T-12	F96T12CW/HO	15	Cool White/High Output	12000
CIRCLINE					
22	T-9	FC8T9/CW	12	Cool White	12000
32	T-9	FC12T9/CW	12	Cool White	12000
40	T-9	FC16T9/CW	12	Cool White	12000



T12



CIRCLINE

Compact Fluorescent Bases

Choke / Starter Operation



G23

GX23

GX23-2

G24 d3

Electronic or Dimming Operation



G24 q-1

G24 q-2

G24 q-3

Compact Fluorescent

WATTS	ORDER CODE	MASTER CARTON	BASE	COLOR	RATED HOURS
SINGLE TUBE (2 PIN)					
7	CF7DS/827	50	G23	2700k	10000
	CF7DS/835	50	G23	3500k	10000
	CF7DS/841	50	G23	4100k	10000
9	CF9DS/827	50	G23	2700k	10000
	CF9DS/835	50	G23	3500k	10000
	CF9DS/841	50	G23	4100k	10000
13	CF13DS/827	50	GX23	2700k	10000
	CF13DS/835	50	GX23	3500k	10000
	CF13DS/841	50	GX23	4100k	10000
DOUBLE TUBE (2 PIN)					
13	CF13DD/827	50	GX23-2	2700k	10000
	CF13DD/835	50	GX23-2	3500k	10000
	CF13DD/841	50	GX23-2	4100k	10000
26	CF26DD/827	50	G24d-3	2700k	10000
	CF26DD/835	50	G24d-3	3500k	10000
	CF26DD/841	50	G24d-3	4100k	10000
DOUBLE TUBE ELECTRONIC (4 PIN)					
13	CF13DDE/827	50	G24q-1	2700k	10000
	CF13DDE/835	50	G24q-1	3500k	10000
	CF13DDE/841	50	G24q-1	4100k	10000
18	CF18DDE/827	50	G24q-2	2700k	10000
	CF18DDE/835	50	G24q-2	3500k	10000
	CF18DDE/841	50	G24q-2	4100k	10000
26	CF26DDE/827	50	G24q-3	2700k	10000
	CF26DDE/835	50	G24q-3	3500k	10000
	CF26DDE/841	50	G24q-3	4100k	10000



CF 13 DS



CF 13 DD

Self Ballasted Compact Fluorescents

WATTS	ORDER CODE	BULB TYPE	MASTER CARTON	BASE	COLOR	RATED HOURS
SPIRAL						
9	SP9/27K	SPIRAL CFL	10	MEDIUM	2700K	10000
13	SP13/27K	SPIRAL CFL	10	MEDIUM	2700K	10000
13	SP13/35K	SPIRAL CFL	10	MEDIUM	3500K	10000
13	SP13/41K	SPIRAL CFL	10	MEDIUM	4100K	10000
13	SP13/50K	SPIRAL CFL	10	MEDIUM	5000K	10000
15	SP15/27K	SPIRAL CFL	10	MEDIUM	2700K	10000
15	SP15/41K	SPIRAL CFL	10	MEDIUM	4100K	10000
15	SP15/50K	SPIRAL CFL	10	MEDIUM	5000K	10000
20	SP20/27K	SPIRAL CFL	10	MEDIUM	2700K	10000
20	SP20/41K	SPIRAL CFL	10	MEDIUM	4100K	10000
20	SP20/50K	SPIRAL CFL	10	MEDIUM	5000K	10000
26	SP26/27K	SPIRAL CFL	10	MEDIUM	2700K	10000
26	SP26/41K	SPIRAL CFL	10	MEDIUM	4100K	10000
26	SP26/50K	SPIRAL CFL	10	MEDIUM	5000K	10000
R20						
11	11R20/27K	R20 REFLECTOR	10	MEDIUM	2700K	10000
11	11R20/50K	R20 REFLECTOR	10	MEDIUM	5000K	10000
R30						
15	15R30/27	R30 REFLECTOR	10	MEDIUM	2700K	10000
15	15R30/50K	R30 REFLECTOR	10	MEDIUM	5000K	10000
R40						
23	23R40/27K	R40 REFLECTOR	10	MEDIUM	2700K	10000
23	23R40/41K	R40 REFLECTOR	10	MEDIUM	4100K	10000
PAR20						
11	11PAR20/27K	PAR 20 REFLECTOR	10	MEDIUM	2700K	10000
11	11PAR20/50K	PAR 20 REFLECTOR	10	MEDIUM	5000K	10000
PAR30						
15	15PAR30/27K	PAR 30 REFLECTOR	10	MEDIUM	2700K	10000
15	15PAR30/50K	PAR 30 REFLECTOR	10	MEDIUM	5000K	10000
PAR38						
23	23PAR38/27K	PAR 38 REFLECTOR	10	MEDIUM	2700K	10000
23	23PAR38/50K	PAR 38 REFLECTOR	10	MEDIUM	5000K	10000



SPIRAL



R-20



R-30



R-40



PAR 30



PAR 38

HID - High Pressure Sodium

WATTS	ORDER CODE	BASE	MASTER CARTON	FINISH	RATED HOURS
35	LU35MED (Import)	MED	12	Clear	24000
	LU35MED (Major Brand)	MED	12	Clear	24000
50	LU50MED (Import)	MED	12	Clear	24000
	LU50MED (Major Brand)	MED	12	Clear	24000
70	LU70MED (Import)	MED	12	Clear	24000
	LU70MED (Major Brand)	MED	12	Clear	24000
70	LU70MOG (Import)	MOG	12	Clear	24000
	LU70MOG (Major Brand)	MOG	12	Clear	24000
100	LU100MED (Import)	MED	12	Clear	24000
	LU100MED (Major Brand)	MED	12	Clear	24000
100	LU100MOG (Import)	MOG	12	Clear	24000
	LU100MOG (Major Brand)	MOG	12	Clear	24000
150	LU150MED (Import)	MED	12	Clear	24000
	LU150MED (Major Brand)	MED	12	Clear	24000
150	LU150MOG (Import)	MOG	12	Clear	24000
	LU150MOG (Major Brand)	MOG	12	Clear	24000
250	LU250MOG (Import)	MOG	12	Clear	24000
	LU250MOG (Major Brand)	MOG	12	Clear	24000
400	LU400MOG (Import)	MOG	12	Clear	24000
	LU400MOG (Major Brand)	MOG	12	Clear	24000
1000	LU1000MOG (Import)	MOG	6	Clear	24000
	LU1000MOG (Major Brand)	MOG	6	Clear	24000



MEDIUM



MOGUL

HID - Metal Halide

WATTS	ORDER CODE	BASE	MASTER CARTON	FINISH	RATED HOURS
50	MH50/U (Import)	MED	12	Clear	10000
	MH50/U (Major Brand)	MED	12	Clear	10000
70	MH70/U (Import)	MED	12	Clear	10000
	MH70/U (Major Brand)	MED	12	Clear	10000
100	MH100/U (Import)	MED	12	Clear	10000
	MH100/U (Major Brand)	MED	12	Clear	10000
175	MH175U MED (Import)	MOG	12	Clear	10000
	MH175U MED (Major Brand)	MOG	12	Clear	10000
	MH175U MOG (Import)	MED	12	Clear	10000
	MH175U MOG (Major Brand)	MED	12	Clear	10000
250	MH250U (Import)	MOG	12	Clear	10000
	MH250U (Major Brand)	MOG	12	Clear	10000
400	MH400U (Import)	MOG	6	Clear	20000
	MH400U (Major Brand)	MOG	6	Clear	20000
1000	MH1000U (Import)	MOG	6	Clear	12000
	MH1000U (Major Brand)	MOG	6	Clear	12000
50	MP50/U/MED (Import)	MED	6	Clear	12000
	MP50/U/MED (Major Brand)	MED	6	Clear	12000
70	MP70/U/MED (Import)	MED	6	Clear	12000
	MP70/U/MED (Major Brand)	MED	6	Clear	12000
100	MP100/U/MED (Import)	MED	6	Clear	12000
	MP100/U/MED (Major Brand)	MED	6	Clear	12000
150	MP150/U/MED (Import)	MED	6	Clear	12000
	MP150/U/MED (Major Brand)	MED	6	Clear	12000



MEDIUM



MOGUL

Fluorescent Ballasts

ITEM	DESCRIPTION	CARTON
E2/40RS-120MC	2 BULB 4' T12 ELECTRONIC	10
E2/40RS-277VMC	2 BULB 4' T12 ELECTRONIC 277V	10
EP2/32IS3MV/MC	2 BULB 4' T-8 ELECTRONIC INSTANT START, MULTI VOLT, MINI CAN	10
EP4/32IS3MV/MC/HE	3 BULB 4' T-8 ELECTRONIC INSTANT START, MULTI VOLT, MINI CAN, HIGH POWER FACTOR	10
3X32T8/UNV/ISN-SC	Major Brand 3 OR 4 BULB 4' T-8 ELECTRONIC INSTANT START, MULTI VOLT, MINI CAN, HIGH POWER FACTOR	10
E2/75IS/MV/SC	1 OR 2 BULB 8' T12 ELECTRONIC, INSTANT START, MULTI VOLT	10
2X59T8/UNV/ISN-SC	Major Brand 1 OR 2 BULB T8 ELECTRONIC, UNIVERAL VOLTAGE, INSTANT START	10
E2/110RS-120	2 BULB T12, HIGH OUTPUT, 120 VOLT	10



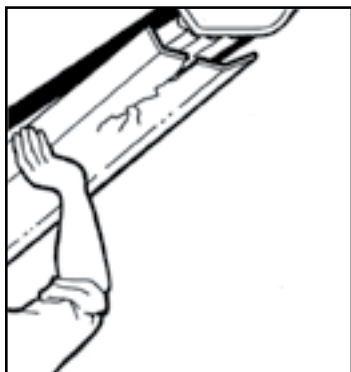
HID Ballast Kits

ITEM	DESCRIPTION
EMZA00W50	50W MH 4 TAP
EMZA 00W70	70W MH 4 TAP
EMZA00W100	100W MH 4 TAP
EMCA00W151	150W MH 4 TAP
E871W117	175W MH 4 TAP
E871W251	250W MH 4 TAP
E871W320	320W MH 4 TAP PULSE START
EMCA 00W401	400W MH 4 TAP PULSE START
EMCA00W400	400W MH 5 TAP
E871W211	1000W MH 4 TAP
E871WDD211	1000W MH 5 TAP
EMCA00W1500	1500W MH 4 TAP
ESZA00W150	150W HPS 4 TAP
E971WS0250	250W HPS 4 TAP
E971WS0400	400W HPS 4 TAP
E971WS01000	1000W HPS 4 TAP

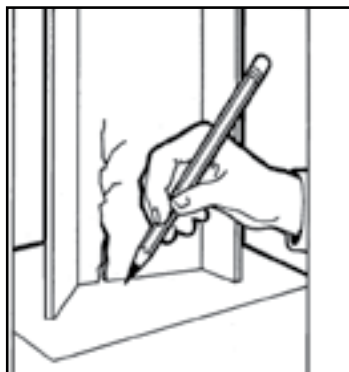


HOW TO ORDER YOUR WRAP-AROUND DIFFUSER

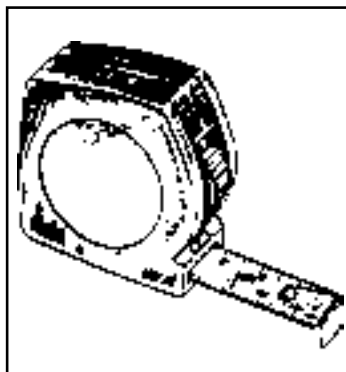
We have many wrap-around diffusers. Our current inventory has close to 1000 different shapes available, making it impossible to show them all in our catalog. If you are unable to match your part with one of our drawings, please follow the steps below and trace the end view of your part and fax the drawing to us for identification.



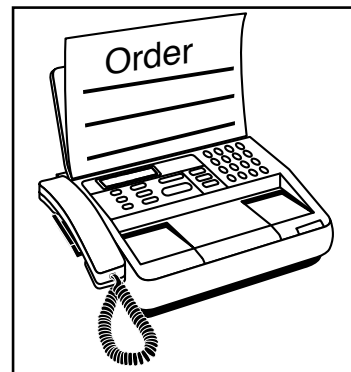
1. Remove old lens from light fixture.



2. Place old lens on paper and trace the profile outline inside and out.



3. Measure overall length and edges of the profile outline.



4. FAX or email information. Fax machines may shrink images during transmission. Measurements are important.

SkyScapes

PART #	DESCRIPTION	COLOR	STANDARD SIZE
SKY-CLOUDS	.045 DURASTRONG PLASTIC	BLUE SKY WITH FLUFFY CLOUDS	23 3/4" X 47 3/4"
SKY-JETS	.045 DURASTRONG PLASTIC	BLUE SKY WITH FIGHTER JETS	23 3/4" X 47 3/4"
SKY-PETS	.045 DURASTRONG PLASTIC	CURIOUS PETS, BLUE SKY & CLOUDS	23 3/4" X 47 3/4"
SKY-BALLOONS	.045 DURASTRONG PLASTIC	BLUE SKY WITH HOT AIR BALLOONS	23 3/4" X 47 3/4"
SKY-BEV GLASS	.045 DURASTRONG PLASTIC	BLUE SKY, CLOUDS THRU BEVELED GLASS	23 3/4" X 47 3/4"
SKY-BUTTERFLIES	.045 DURASTRONG PLASTIC	BLUE SKY WITH BUTTERFLIES & FLOWERS	23 3/4" X 47 3/4"
SKY-DILBERT	.045 DURASTRONG PLASTIC	DILBERT THE ENGINEER PEEKING IN	23 3/4" X 47 3/4"
SKY-USA FLAG	.045 DURASTRONG PLASTIC	BLUE SKY WITH AMERICAN FLAG	23 3/4" X 47 3/4"
SKY-FLOWERS	.045 DURASTRONG PLASTIC	BLUE SKY WITH PINK FLOWERING TREE	23 3/4" X 47 3/4"
SKY-KITES	.045 DURASTRONG PLASTIC	BLUE SKY WITH KITES FLYING	23 3/4" X 47 3/4"
SKY-OCEAN	.045 DURASTRONG PLASTIC	UNDERWATER CORAL REEF & TROPICAL FISH	23 3/4" X 47 3/4"
SKY-PALMS	.045 DURASTRONG PLASTIC	BLUE SKY WITH TROPICAL PALM TREE	23 3/4" X 47 3/4"
SKY-SPRING	.045 DURASTRONG PLASTIC	BLUE SKY WITH WHITE FLOWERING TREE	23 3/4" X 47 3/4"

PLAST-D-FUSERS

is the Master Distributor for

SKY-SCAPES™
Decorative Fluorescent Light Diffusers

Sky-Scapes® are durable, lightweight decorative fluorescent light diffusers that replace existing light panels. Sky-Scapes® will “lighten up” your environment and spirits. Our relaxing sky designs will make every day a bright sunny day. They soothe and calm while eliminating harsh glare from fluorescent lighting. Sky-Scapes® diffusers measure 23 ¾” x 47 ¾” and are .045 mils in thickness. Our diffusers drop into a standard 2’ x 4’ fluorescent light frame. If your light fixture is smaller, Sky-Scapes® diffusers can easily be cut with a utility knife to fit your existing light frame.

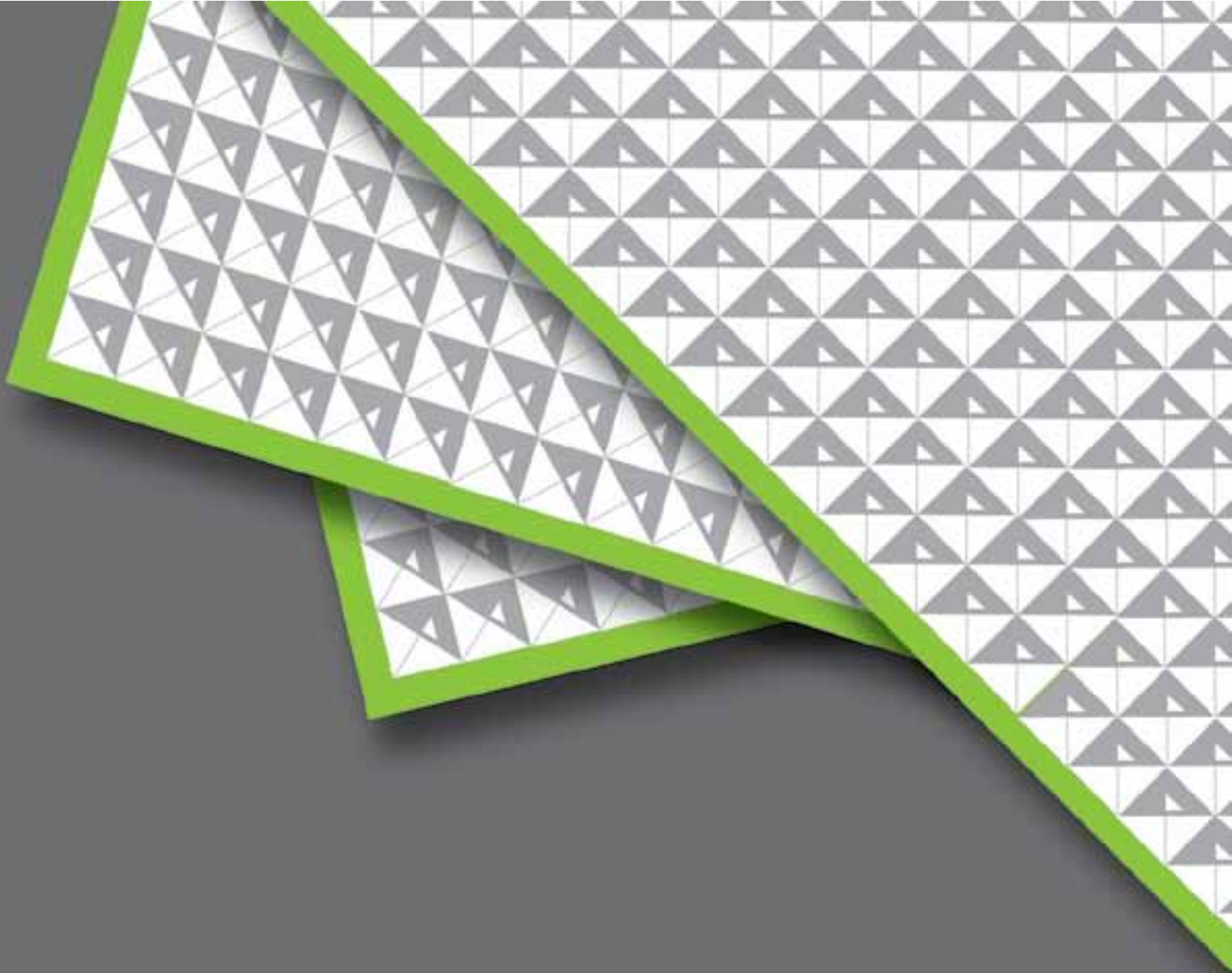


The scenes on Sky-Scapes® diffusers are printed with UV inks. The printing produces about a 32% reduction in light. When using high lumens daylight or full spectrum bulbs with 5000° Kelvin (a color temperature close to white), most don’t notice a reduction of light, just less glare! For color correct designs, make sure the fluorescent light bulbs are daylight or full spectrum.

We hear many stories from customers about the physical and mental benefits of installing Sky-Scapes® fluorescent light diffusers. Schools, jails, hospitals, dentist offices, chiropractors and spas report more calm and cooperative clients after installing Sky-Scapes® diffusers. Medical research has found that patients are more cooperative and heal more quickly when exposed to outdoor lighting and calming nature scenes.

Ordering Chart is on Page 82.





Plast-D-Fusers

lenses bulbs ballasts

2055 Luna Road, Suite 156 | Carrollton, TX 75006 | Ph 800.343.8737 | Fax 972.243.7479

info@plast-d-fusers.com / www.plast-d-fusers.com