

SpecSeal® SSB Firestop Pillows



SpecSeal® Firestop Pillows are through-penetration firestop products resembling small cushions or soft bricks. These intumescent and highly resilient pillows are installed in openings by compressing and stacking into the opening in a brick-like fashion.

SpecSeal® Firestop Pillows consist of a mineral fiber core material sealed with a water-resistant intumescent membrane. This coated core material is then heat-sealed in a tough, nonirritating, fire-retardant poly bag.

Applications

SpecSeal® Firestop Pillows are designed for firestopping medium to large openings containing various penetrating items such as pipes, conduits, cables, insulated metal pipes, bus ducts and HVAC ducts. Pillows are particularly well suited for applications involving data, communications, power or control cables, innerducts and cable trays. This method of sealing offers easy retrofitting of cable installations without the need to damage the firestop seal. Difficult applications such as one-sided shaft wall installations and other applications where access is restricted to one side of the assembly may be easily firestopped with this material.

Specifications

The firestopping system shall utilize an intumescent pillow heat sealed in a fire-retardant poly bag. The firestop pillow shall consist of a monolithic (one piece) core that is encapsulated on all sides by a flexible intumescent coating and shall not contain any loose fiber fill. The pillow shall be UL Certified and/or FM Systems Approved and tested to the requirements of ASTM E814 (UL1479) and CAN/ULC-S115.

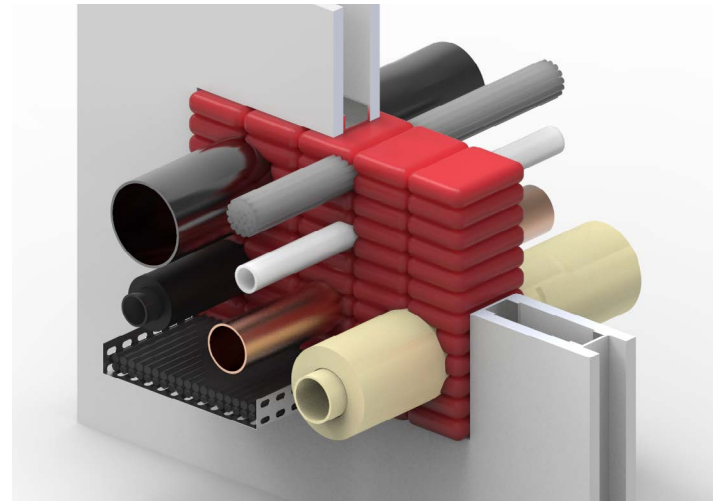
Specified Divisions

Division 7	07 84 13	Penetration Firestopping
Division 22	22 00 00	Plumbing
Division 23	23 00 00	HVAC
Division 26	26 00 00	Electrical

Performance

SSB Pillows are the basis for systems that meet the exacting criteria of ASTM E814 (UL1479) and CAN/ULC-S115 as well as the time-temperature requirements of ASTM E119 (UL263). Tested systems will provide up to 4-hour rating for penetrations through gypsum board, concrete, CMU, or concrete tilt-up walls, as well as concrete or concrete over steel deck floors. Additional systems have been tested up to 3-hours in gypsum board walls.

AIR LEAKAGE: Tests conducted by Underwriters Laboratories for air leakage at ambient and elevated temperatures (400°F (204°C)) indicate that properly installed pillows seal penetrations virtually airtight.



PHYSICAL PROPERTIES

Color	Red
Density	4 pcf (64 kg/cu m)
Flammability*	V-0
Compression**	25% to 33%
Air Leakage	Less than 1 CFM/sq. ft.
In Service Temperature	Less than 130°F (54°C)
Storage Temperature	Less than 130°F (54°C)
STC Rating (ASTM E 90-40)	60 (Relates to specific construction)
L Rating (UL1479 and CAN/ULC-S115)	Less than 1 CFM/sq. ft. (Pillows Only)
VOC Content***	0.00 lbs/gal (0.0 g/L)
Shelf Life	No Limit

*Outer poly bag **As installed ***Per SCAQMD Rule 1168 (EPA Method 24)

Features & Benefits

- Intumescent - expands in all directions for a tough, tight seal
- Reinstallable for easy retrofitting of cables
- Lightweight for ease of installation
- Easier wire screen requirements for large openings and 3 to 4 hour ratings
- Heat-sealed poly bag - strong & durable
- No sewn seams to unravel or tear, no irritating fiberglass
- Monolithic encapsulated core, no loose fill
- No special tools required
- Superior air leakage ratings

SpecSeal® SSB Firestop Pillows



Limitations

This product has been designed to be safe with plastics. It has been used extensively and successfully with various types of plastic pipes, tubes, and plastic cable insulations. Variations in these materials, however, make it impossible to guarantee compatibility. STI strongly recommends that the user consults with the pipe, tubing, or cable manufacturer in question regarding any known sensitivities or potential restrictions before applying this product.

Maintenance

INSPECTION: Installations should be inspected periodically for subsequent damage. Replace any damaged pillows.

RETROFIT: Cables may be added or replaced in previously sealed openings by removing the mesh (if present) and removing and replacing pillows as required. **DO NOT WEAVE CABLES THROUGH WIRE MESH!** Doing so may interfere with subsequent efforts to add or remove cables and may pose a safety hazard. Reinstall pillows and putty as required and then replace wire mesh.

NOTE: Removal of cables may require the installation of additional pillows to fill the void created by removing the cables. Inspect pillows for excess compression. SpecSeal Firestop Pillows are designed to be very durable and highly resilient. Excessive handling or abuse may permanently compress the pillows. If pillows are too thin to apply pressure within the seal when installed, replace thin pillows or add additional new pillows as required.

System Selection

To find your firestop system or create a submittal, visit <https://systems.stifirestop.com/> to use System Search & Submittal Builder. You may also visit the [UL Online Certifications Directory/UL Product iQ™](#) for complete listings. (Firestop Systems).

Technical Service

Specified Technologies Inc. provides toll free technical support to assist in product selection and appropriate installation design. UL System designs suitable for submittal or specification purposes are available on request. A complete library of technical information is provided at the company's website www.stifirestop.com including Safety Data Sheets (SDS's).

Precautionary Information

Consult Safety Data Sheet (SDS) for additional information on the safe handling and disposal of this material. Avoid damaging poly outer bag. Do not use damaged pillows.

Availability

SpecSeal® Firestop Pillows are available from Specified Technologies Inc. (STI) authorized distributors. For additional purchasing and technical information or for the names and locations of the nearest representative and/or distributor, regarding this and other Specified Technology products, please call 1-800-992-1180 or visit www.stifirestop.com.

ORDERING INFORMATION

Catalog Number	UPC Number	Size	(UOM) Qty.	Case Qty.	Weight (Each)
SSB14	730573061404	1" (25 mm) x 4" (101 mm) x 9" (225 mm)	1	20	0.19 lbs (0.09 kg)
SSB24	730573062401	2" (50 mm) x 4" (101 mm) x 9" (225 mm)	1	10	0.31 lbs (0.14 kg)
SSB26	730573062609	2" (50 x mm) x 6" (152 mm) x 9" (225 mm)	1	22	0.39 lbs (0.18 kg)
SSB36	730573063606	3" (76 x mm) x 6" (152 mm) x 9" (225 mm)	1	16	0.55 lbs (0.25 kg)

IMPORTANT NOTICE: ALL STATEMENTS, TECHNICAL INFORMATION, AND RECOMMENDATIONS CONTAINED HEREIN ARE BASED UPON TESTING BELIEVED TO BE RELIABLE, BUT THE ACCURACY AND COMPLETENESS THEREOF IS NOT GUARANTEED.

STI TYPICALLY WARRANTIES ITS PRODUCTS FOR ONE FULL YEAR. FOR COMPLETE DETAILS OF OUR STANDARD WARRANTY, PLEASE VISIT WWW.STIFIRESTOP.COM/LEGAL/WARRANTY

MADE IN THE USA - © 2021 SPECIFIED TECHNOLOGIES INC.

