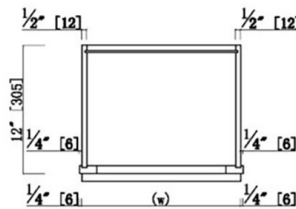
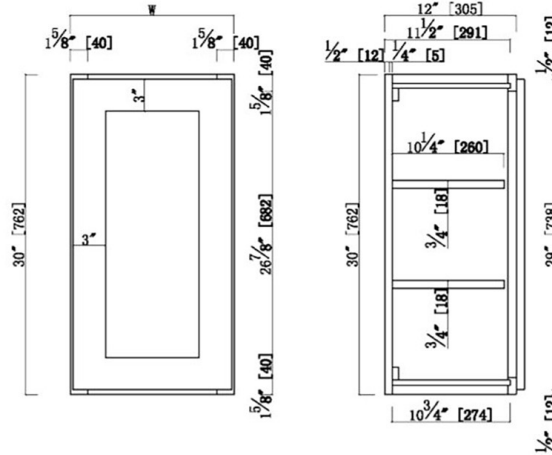


Brookings Fully Assembled Shaker Tall Wall Kitchen Cabinet 12x30x12

Espresso



W2130	21"	20.5"
W1830	18"	17.5"
W1530	15"	14.5"
W1230	12"	11.5"
Item Name	W	(w)

SPECIFICATIONS

MATERIAL CONSTRUCTION: Wood
WOOD SPECIES: Maple
ASSEMBLED DIMENSIONS: 30" H x 12" L x 12" D
ASSEMBLED WEIGHT: 45 lbs.
KITCHEN CABINET TYPE: Tall Wall
MOUNTING TYPE: Wall Mount
CONSTRUCTION TYPE: Face Frame
HINGE STYLE: Soft Close
DOOR STYLE: 1 shaker door
NUMBER OF DRAWERS: 0
DRAWER DIMENSIONS 1: N/A
DRAWER DIMENSIONS 2: N/A
DRAWER DIMENSIONS 3: N/A
DWR BOX MATERIAL:
DWR CONSTRUCTION:
DWR GLIDE:
FAKE DWR QTY: 0
FAKE DWR LOCATION:

NUMBER OF SHELVES: N/A
SHELF STYLE: N/A
ADJUSTIBLE SHELVES: N/A
SHELF ADJUSTIBILITY INCREMENTS: N/A
SHELF DIMENSIONS: "W x " D
SHELF THICKNESS:
SHELF MATERIAL: N/A
FACE FRAME MATERIAL: N/A
SIDES MATERIAL: Plywood
BOTTOM MATERIAL: Plywood
BACK PANEL MATERIAL: Plywood
BACK BRACE MATERIAL: N/A
TOE KICK INSET WIDTH: N/A

WARRANTY: 1-Year limited warranty
LEGAL FOR SALE IN CALIFORNIA: Yes
CARB COMPLIANT: CARB Phase 3
TSCA TITLE VI COMPLIANT: Yes



TYPE:
JOB:
ORDER CODE:
APPROVALS: