

# LIQUID TIGHT CONDUIT AND TUBING

## LIQUID TIGHT CONDUIT



### FTPV

- Intended for use as a raceway for the installation of approved conductors with a nominal rating of 600 volts or less for non-hazardous locations
- Sizes from 3/8" to 2"
- Integral Rigid and Flexible PVC Construction resists Pull and Crushing. Suitable for Indoor or Outdoor use.
- Sunlight resistant
- Temperature Ratings:  
 Dry .....0° to 176°F (-18 to 80°C)  
 In Oil .....Up to 160°F (70°C)  
 Wet Locations ...Up to 140°F (60°C)
- Use Straight-Thru and Right-Angle Conduit Connectors
- Cut to Length with WT-1 Cutting Tool
- Cannot run mix of wire voltages in conduit



WT-1 Cutting Tool

Part #	Trade Size	UL/CSA Desc.	A Outside Diameter (Inch)	B Inside Diameter (Inch)	Quantity
FTPV3758C	3/8	HF1 3/8	.700	.494	Stocked in 100 Foot Rolls
FTPV5008C	1/2	HF1 1/2	.830	.632	
FTPV7508C	3/4	HF1 3/4	1.040	.830	
FTPV10008C	1	HF1 1	1.303	1.054	
FTPV12508C	1 1/4	EC125	1.660	1.410	
FTPV15008L	1 1/2	EC150	1.900	1.600	50 Ft
FTPV20008L	2	EC200	2.375	2.045	

Use CCNY-XXX-8 or NMSC-XXX-8 connectors on page G-33.

G

## NON-METALLIC ELECTRICAL TUBING\*



### TUPV

- Intended for use as a support and protection of insulated conductors with a nominal rating of 600 volts or less in equipment for non-hazardous locations
- TUPV -18°C to 70°C temperature rating
- Maximum flexibility tubing can be used in extremely tight quarters
- Smooth inside for easier wire pulling
- Suitable for high vibration or flexing applications
- Black
- CSA approved as liquid-tight tubing only
- Not CSA approved for mechanical protection – not considered conduit
- Cannot run mix of wire voltages in tubing



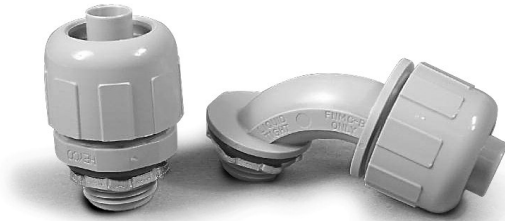
Part #	Trade Size	UL/CSA Desc.	A Outside Diameter (Inch)	B Inside Diameter (Inch)	Quantity
*TUPV2500C	1/4	ET025	.575	.405	100
TUPV3750C	3/8	ET038	.710	.504	100
TUPV5000C	1/2	ET050	.840	.642	100
TUPV7500C	3/4	ET075	1.050	.840	100
TUPV10000C	1	ET100	1.315	1.066	100
TUPV12500C	1 1/4	ET125	1.660	1.410	100
TUPV15000L	1 1/2	ET150	1.900	1.600	50
TUPV20000L	2	ET200	2.375	2.045	50

Use CCNY-XXX-0 connector on page G-33.

\*Not Approved by CSA or UL

# LIQUID TIGHT CONNECTORS - NYLON/PVC

## Straight and Right Angle Non-Metallic Connectors



- UV rated
- Four Sizes for 3/8" to 2" Conduit
- No Disassembly Required to Install. Simply push Conduit or Tubing over Ferrule and tighten Sealing Nut
- No Threading of Conduit is Necessary. Lower your Installed Cost
- Connector may be reused. Turn Sealing Nut in Clockwise direction to Release Conduit
- Molded 6/6 Nylon. Non-Conductive, Non-Corrosive; Resistant to Fuels, Lubricants and most Chemicals

### Straight Connector

Black Connector with 'O' Ring & Steel Locknut Part #	Grey Connector with 'O' Ring & Steel Locknut Part #	For Conduit	Thread Size	K.O. Size Inch	CTN/PKG	STD PK
CCNY2500		¼	¼ NPT	¼	25	100
CCNY3750	CCNY3758	¾	¾ NPT	¾	25	100
CCNY5000	CCNY5008	½	½ NPT	½	25	100
CCNY7500	CCNY7508	¾	¾ NPT	¾	10	100
CCNY10000	CCNY10008	1	1 NPT	1	5	50
CCNY12500	CCNY12508	1¼	1¼ NPT	1¼	5	25
CCNY15000	CCNY15008	1½	1½ NPT	1½	2	10
CCNY20000	CCNY20008	2	2 NPT	2	2	10

### 90° Connector

Black Part #	Grey Part #	For Conduit	Thread Size	K.O. Size Inch	CTN/PKG	STD PK
CCNY37900	CCNY37908	¾	¾ NPT	¾	10	100
CCNY50900	CCNY50908	½	½ NPT	½	10	100
CCNY75900	CCNY75908	¾	¾ NPT	¾	10	100
CCNY10900	CCNY10908	1	1 NPT	1	5	50
CCNY125900	CCNY125908	1¼	1¼ NPT	1¼	5	25
CCNY150900	CCNY150908	1½	1½ NPT	1½	2	10
CCNY200900	CCNY200908	2	2 NPT	2	2	10

## Combination Straight – 90° Swivel Connector

**\*\*One connector does every angle !!**



Grey Part #	For Conduit	Thread Size	K.O. Size Inch	QTY/ BOX
CCSW5008	N.M. Swivel L.T. Con. 1/2" GREY	½ NPT	½	10
CCSW7508	N.M. Swivel L.T. Con. 3/4" GREY	¾ NPT	¾	10
	SCREW-ON PVC RUBBER O-RING			



also available in black on request

## Screw-On Straight and 90° Non-Metallic Connectors

For use with non-metallic liquid-tight conduit, type B.  
 Produced from UV rated plastic for long outdoor life.



Straight Grey Connector with 'O' Ring & Steel Locknut Part #	90° Grey Connector with 'O' Ring & Steel Locknut Part #	For Conduit	Thread Size	K.O. Size Inch	STD PK
NMSC50	NMSC9050	½	½ NPT	½	100
NMSC75	NMSC9075	¾	¾ NPT	¾	100



G