

Grip-Tite® Strain Relief Connectors

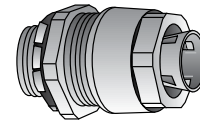
NEC/CEC:
Listed for Ordinary Locations

Applications

- To secure and seal cords or cables entering enclosures or raceways.

Features

- Grip-tite style - 2-piece internal design features a nylon gripper for exceptional pullout protection and a neoprene grommet for a moisture-proof seal (up to 1" dia. cord range).
- Dual-grommet style - for over 1" dia. cord range. Removable insert allows for wider range of cable diameters within single fitting.
- Simple installation, cord can be installed without disassembly of the fitting.
- Liquidtight/Oiltight/Raintight.
- UL Listed NEMA 4 and 6 when installed into a NPT threaded entry or UL Listed conduit hub (sizes 1 1/4" and larger require thread sealant).
- Rated at +90 °C (+194 °F).
- Suitable for NEMA 4 enclosures and other wet locations
- Male tapered thread NPT.
- Slim diameter profile allows close spacing between connectors.
- Furnished complete with sealing ring and locknut.
- Colored gripper allows for easy identification.



Straight
Type SR-50-250

Standard Materials

- Malleable iron body and gland nut, nylon gripper, neoprene grommet, PVC or Buna-N Sealing ring, steel locknut

Standard Finishes

- Body, gland nut and locknut — zinc plated

Options

- Mechanical Galvanized. Contact your local representative.

NEC/CEC Certifications and Compliances

- UL Standard: ANSI/UL 514B
- UL Listed: E-14817
- CSA Standard: C22.2 No. 18
- CSA Certified: 009795
- Fed. Spec: W-F-406E

Hub Size (Inches)	Dimensions in Millimeters (Inches)		Style	Color	Dimensions in Millimeters (Inches)			Catalog Number
	Cord Range				Throat I.D.	Body Length	Max. Dia.	
1/2	4.06 (0.16)	6.35 (0.25)	Grip-Tite	Red	13.46 (0.53)	31.75 (1.25)	35.05 (1.38)	SR-50-250
1/2	6.35 (0.25)	9.65 (0.38)		White	13.46 (0.53)	31.75 (1.25)	35.05 (1.38)	SR-50-375
1/2	9.65 (0.38)	12.70 (0.50)		Blue	13.46 (0.53)	31.75 (1.25)	35.05 (1.38)	SR-50-500
1/2	12.70 (0.50)	16.00 (0.63)		Brown	15.49 (0.61) ①	31.75 (1.25)	35.05 (1.38)	SR-50-625 ①
3/4	4.06 (0.16)	6.35 (0.25)	Grip-Tite	Red	13.46 (0.53)	31.75 (1.25)	35.05 (1.38)	SR-75-250
3/4	6.35 (0.25)	9.65 (0.38)		White	13.46 (0.53)	31.75 (1.25)	35.05 (1.38)	SR-75-375
3/4	9.65 (0.38)	12.70 (0.50)		Blue	13.46 (0.53)	31.75 (1.25)	35.05 (1.38)	SR-75-500
3/4	12.70 (0.50)	16.00 (0.63)		Brown	19.05 (0.75)	31.75 (1.25)	35.05 (1.38)	SR-75-625
3/4	16.00 (0.63)	19.05 (0.75)		Yellow	19.81 (0.78)	31.75 (1.25)	38.10 (1.50)	SR-75-750
3/4	19.05 (0.75)	22.35 (0.88)		Purple	20.57 (0.81) ①	31.75 (1.25)	44.45 (1.75)	SR-75-875 ①
1	16.00 (0.63)	19.05 (0.75)	Grip-Tite	Yellow	19.81 (0.78)	31.75 (1.25)	44.45 (1.75)	SR-100-750
1	19.05 (0.75)	22.35 (0.88)		Purple	24.38 (0.96)	31.75 (1.25)	44.45 (1.75)	SR-100-875
1	22.35 (0.88)	25.40 (1.00)		Grey	26.67 (1.05)	31.75 (1.25)	41.40 (1.63)	SR-100-1000
1-1/4	22.35 (0.88)	25.40 (1.00)		Grey	30.48 (1.20)	35.05 (1.38)	54.10 (2.13)	SR-125-1000
1	25.40 (1.00)	28.70 (1.13)	Single Grommet		26.67 (1.05) ①	35.05 (1.38)	38.10 (1.50)	SR-100-1125 ①
1-1/4	25.40 (1.00)	35.05 (1.38)			34.29 (1.35) ①	41.40 (1.63)	63.50 (2.50)	SR-125-1375 ①
1-1/2	25.40 (1.00)	35.05 (1.38)			35.05 (1.38)	41.40 (1.63)	63.50 (2.50)	SR-150-1375
1-1/2	35.05 (1.38)	44.45 (1.75)			38.86 (1.53) ①	41.40 (1.63)	76.20 (3.00)	SR-150-1750 ①
2	35.05 (1.38)	44.45 (1.75)	Dual Grommet		40.39 (1.59)	54.10 (2.13)	76.20 (3.00)	SR-200-1750
2-1/2	41.40 (1.63)	50.80 (2.00)			63.50 (2.50)	63.50 (2.50)	101.60 (4.00)	SR-250-2000
2-1/2	47.75 (1.88)	57.15 (2.25)			63.50 (2.50)	63.50 (2.50)	101.60 (4.00)	SR-250-2250
3	47.75 (1.88)	57.15 (2.25)			63.50 (2.50)	63.50 (2.50)	114.30 (4.50)	SR-300-2250
3	54.10 (2.13)	63.50 (2.50)			63.50 (2.50)	63.50 (2.50)	114.30 (4.50)	SR-300-2500

① Remove enough jacket to get conductors through throat I.D.

Grip-Tite® Strain Relief Connectors

NEC/CEC:
Listed for Ordinary Locations

Applications

- To secure and seal cords or cables entering enclosures or raceways.

Features

- Grip-tite style - 2-piece internal design features a nylon gripper for exceptional pullout protection and a neoprene grommet for a moisture-proof seal (up to 1" dia. cord range).
- Dual-grommet style - for over 1" dia. cord range. Removable insert allows for wider range of cable diameters within single fitting.
- Simple installation, cord can be installed without disassembly of the fitting.
- Liquidtight/Oiltight/Raintight.
- UL Listed NEMA 4 and 6 when installed into a NPT threaded entry or UL Listed conduit hub (sizes 1 1/4" and larger require thread sealant).
- Rated at +90 °C (+194 °F).
- Suitable for NEMA 4 enclosures and other wet locations
- Male tapered thread NPT.
- Slim diameter profile allows close spacing between connectors.
- Furnished complete with sealing ring and locknut.
- Colored gripper allows for easy identification.

Standard Materials

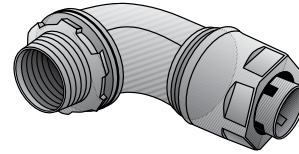
- Malleable iron body and gland nut, nylon gripper, neoprene grommet, PVC or Buna-N Sealing ring, steel locknut

Standard Finishes

- Body, gland nut and locknut — zinc plated

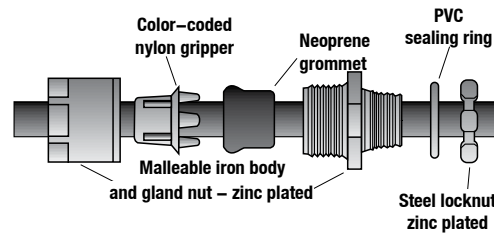
Options

- Mechanical Galvanized. Contact your local representative.



90°
Type SR-950-250

Illustrated Dimensions



Strain Relief Installation

NEC/CEC Certifications and Compliances

- UL Standard: ANSI/UL 514B
- UL Listed: E-14817
- CSA Standard: C22.2 No. 18
- CSA Certified: 009795
- Fed. Spec: W-F-406E

Dimensions in Millimeters (Inches)					Dimensions in Millimeters (Inches)				Catalog Number
Hub Size (Inches)	Cord Range		Style	Color	Throat I.D.	Body Length	Max. Dia.	Turning Radius	
1/2	4.06 (0.16)	6.35 (0.25)	Grip-Tite	Red	14.99 (0.59)	35.05 (1.38)	28.70 (1.13)	47.75 (1.88)	SR-950-250
1/2	6.35 (0.25)	9.65 (0.38)		White	14.99 (0.59)	35.05 (1.38)	28.70 (1.13)	47.75 (1.88)	SR-950-375
1/2	9.65 (0.38)	12.70 (0.50)		Blue	14.99 (0.59)	35.05 (1.38)	28.70 (1.13)	47.75 (1.88)	SR-950-500
1/2	12.70 (0.50)	16.00 (0.63)		Brown	14.99 (0.59) ①	35.05 (1.38)	28.70 (1.13)	41.40 (1.63)	SR-950-625 ①
3/4	4.06 (0.16)	6.35 (0.25)	Grip-Tite	Red	20.57 (0.81)	35.05 (1.38)	35.05 (1.38)	41.40 (1.63)	SR-975-250
3/4	6.35 (0.25)	9.65 (0.38)		White	20.57 (0.81)	35.05 (1.38)	35.05 (1.38)	47.75 (1.88)	SR-975-375
3/4	9.65 (0.38)	12.70 (0.50)		Blue	20.57 (0.81)	35.05 (1.38)	35.05 (1.38)	47.75 (1.88)	SR-975-500
3/4	12.70 (0.5)	16.00 (0.63)		Brown	20.57 (0.81)	35.05 (1.38)	35.05 (1.38)	41.40 (1.63)	SR-975-625
3/4	16.00 (0.63)	19.05 (0.75)		Yellow	20.57 (0.81)	41.40 (1.63)	38.10 (1.50)	50.80 (2.00)	SR-975-750
3/4	19.05 (0.75)	22.35 (0.88)		Purple	20.83 (0.82) ①	47.75 (1.88)	41.40 (1.63)	47.75 (1.88)	SR-975-875 ①
1	19.05 (0.75)	22.35 (0.88)	Grip-Tite	Purple	25.91 (1.02)	47.75 (1.88)	41.40 (1.63)	50.80 (2.00)	SR-9100-875
1	22.35 (0.88)	25.40 (1.00)		Grey	26.42 (1.04)	63.50 (2.50)	47.75 (1.88)	50.80 (2.00)	SR-9100-1000
1-1/4	22.35 (0.88)	25.40 (1.00)	Grip-Tite	Grey	34.04 (1.34)	73.15 (2.88)	47.75 (1.88)	66.8 (2.63)	SR-9125-1000
1-1/4	25.40 (1.00)	35.05 (1.38)	Dual Grommet		34.04 (1.34) ①	73.15 (2.88)	47.75 (1.88)	66.8 (2.63)	SR-9125-1375 ①

① Remove enough jacket to get conductors through Throat I.D.

Grip-Tite® Strain Relief Connectors

GRIP-TITE STRAIN RELIEF CONNECTOR SELECTION CHART

NEC/CEC:
Listed for Ordinary Locations

Selection Chart ①

TYPE OF CORD	SV SVO SVT	SJT						SJ, SJTO, SJO						STO						S, SO																				
		18		16		14		12		10		18		16		14		12		10		8		6		4														
WIRE SIZE		2	3	2	3	4	2	3	4	2	3	4	2	3	4	2	3	4	2	3	4	2	3	4	2	3	4	2	3	4	2	3	4	2	3	4				
NO. OF COND		2	3	2	3	4	2	3	4	2	3	4	2	3	4	2	3	4	2	3	4	2	3	4	2	3	4	2	3	4	2	3	4	2	3	4				
-250 (RED)																																								
-375 (WHITE)																																								
-500 (BLUE)																																								
-625 (BROWN)																																								
-750 (YELLOW)																																								
-875 (PURPLE)																																								
-1000 (GREY)																																								

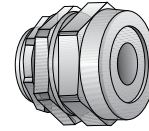
① This chart is intended for use as a guide only. Whenever possible, exact cord dimensions should be used. O-Z/Gedney Company assumes no liability for errors, omissions or dimensional changes which may result from changes in design, material or the manufacturing process and which may affect cord and fitting compatibility.

Gold Seal Strain Relief Connectors

NEC/CEC:
Listed for Ordinary Locations

Features

- Tapered threaded male hub NPT.
- Watertight/Oiltight.
- UL Listed NEMA 4 and 6 when installed into a NPT threaded entry or UL Listed conduit hub (sizes 1 1/4" and larger require thread sealant).
- Rated at +90 °C (+194 °F).



Straight Connector
Type SR-502

Standard Materials

- Malleable iron
- Grommets – PVC

Standard Finishes

- Zinc plated

Options

- Mechanical Galvanized. Contact your local representative.

NEC/CEC Certifications and Compliances

- UL Listed: E-14817
- CSA Certified: 009795

Hub Size (Inches)	Cable Range Millimeters (Inches) Dia. Over Jacket		Dimensions in Millimeters (Inches)				Catalog Number
	Min.	Max.	Throat I.D.	Body Length	Thread. Length	Max. Dia.	
1/2	2.54 (0.10) - 5.08 (0.20)		13.21 (0.52)	28.70 (1.13)	14.22 (0.56)	26.92 (1.06)	SR-502 ②
1/2	5.08 (0.20) - 7.62 (0.30)		13.21 (0.52)	28.70 (1.13)	14.22 (0.56)	26.92 (1.06)	SR-503 ②
1/2	7.62 (0.30) - 10.16 (0.40)		13.21 (0.52)	28.70 (1.13)	14.22 (0.56)	26.92 (1.06)	SR-504 ②
1/2	10.16 (0.40) - 12.70 (0.50)		15.49 (0.61)	30.23 (1.19)	14.22 (0.56)	26.92 (1.06)	SR-505 ②
1/2	12.70 (0.50) - 15.24 (0.60)		15.49 (0.61)	30.23 (1.19)	11.18 (0.44)	26.92 (1.06)	SR-506 ②
1/2	15.24 (0.60) - 17.78 (0.70)		15.49 (0.61)	30.23 (1.19)	11.18 (0.44)	35.05 (1.38)	SR-507 ①②
3/4	2.54 (0.10) - 5.08 (0.20)		19.30 (0.76)	30.23 (1.19)	11.18 (0.44)	35.05 (1.38)	SR-752
3/4	5.08 (0.20) - 7.62 (0.30)		19.30 (0.76)	30.23 (1.19)	11.18 (0.44)	35.05 (1.38)	SR-753
3/4	7.62 (0.30) - 10.16 (0.40)		19.30 (0.76)	30.23 (1.19)	11.18 (0.44)	35.05 (1.38)	SR-754 ②
3/4	10.16 (0.40) - 12.70 (0.50)		19.30 (0.76)	30.23 (1.19)	11.18 (0.44)	35.05 (1.38)	SR-755 ②
3/4	12.70 (0.50) - 15.24 (0.60)		19.30 (0.76)	30.23 (1.19)	11.18 (0.44)	35.05 (1.38)	SR-756 ②
3/4	15.24 (0.60) - 17.78 (0.70)		19.30 (0.76)	30.23 (1.19)	11.18 (0.44)	35.05 (1.38)	SR-757 ②
3/4	17.78 (0.70) - 20.32 (0.80)		20.32 (0.8)	31.75 (1.25)	11.18 (0.44)	41.40 (1.63)	SR-758 ②
3/4	20.32 (0.80) - 22.86 (0.90)		20.32 (0.8)	31.75 (1.25)	11.18 (0.44)	16.00 (0.63)	SR-759 ①②
3/4	22.86 (0.90) - 25.40 (1.00)		20.32 (0.8)	31.75 (1.25)	11.18 (0.44)	41.40 (1.63)	SR-7510 ①②
1	2.54 (0.10) - 5.08 (0.20)		24.38 (0.96)	31.75 (1.25)	16.00 (0.63)	41.40 (1.63)	SR-1002
1	5.08 (0.20) - 7.62 (0.30)		24.38 (0.96)	31.75 (1.25)	16.00 (0.63)	41.40 (1.63)	SR-1003
1	7.62 (0.30) - 10.16 (0.40)		24.38 (0.96)	31.75 (1.25)	16.00 (0.63)	41.40 (1.63)	SR-1004
1	10.16 (0.40) - 12.70 (0.50)		24.38 (0.96)	31.75 (1.25)	16.00 (0.63)	41.40 (1.63)	SR-1005
1	12.70 (0.50) - 15.24 (0.60)		24.38 (0.96)	31.75 (1.25)	16.00 (0.63)	41.40 (1.63)	SR-1006 ②
1	15.24 (0.60) - 17.78 (0.70)		24.38 (0.96)	31.75 (1.25)	16.00 (0.63)	41.40 (1.63)	SR-1007 ②
1	17.78 (0.70) - 20.32 (0.80)		24.38 (0.96)	31.75 (1.25)	16.00 (0.63)	41.40 (1.63)	SR-1008 ②
1	20.32 (0.80) - 22.86 (0.90)		24.38 (0.96)	31.75 (1.25)	16.00 (0.63)	41.40 (1.63)	SR-1009 ②
1.00	22.86 (0.90) - 25.40 (1.00)		24.38 (0.96)	31.75 (1.25)	16.00 (0.63)	41.40 (1.63)	SR-10010 ①②
1.00	25.40 (1.00) - 30.48 (1.20)		24.38 (0.96)	35.05 (1.38)	16.00 (0.63)	49.28 (1.94)	SR-10012 ①②
1-1/4	22.86 (0.90) - 25.40 (1.00)		30.48 (1.20)	35.05 (1.38)	16.00 (0.63)	52.32 (2.06)	SR-12510 ②
1-1/4	25.40 (1.00) - 30.48 (1.20)		30.48 (1.20)	35.05 (1.38)	16.00 (0.63)	52.32 (2.06)	SR-12512 ②
1.25	30.48 (1.20) - 35.56 (1.40)		30.99 (1.22)	39.62 (1.56)	16.00 (0.63)	60.45 (2.38)	SR-12514 ①②
1 1/2	25.40 (1.00) - 30.48 (1.20)		38.10 (1.50)	39.62 (1.56)	16.00 (0.63)	60.45 (2.38)	SR-15012 ②
1 1/2	30.48 (1.20) - 35.56 (1.4)		38.10 (1.50)	39.62 (1.56)	16.00 (0.63)	60.45 (2.38)	SR-15014 ②
1.50	35.56 (1.40) - 40.64 (1.60)		39.62 (1.56)	45.97 (1.81)	16.00 (0.63)	76.20 (3.00)	SR-15016 ①②
1.50	40.64 (1.60) - 45.72 (1.80)		39.62 (1.56)	45.97 (1.81)	16.00 (0.63)	76.20 (3.00)	SR-15018 ①②
2	30.48 (1.20) - 35.56 (1.40)		49.02 (1.93)	52.32 (2.06)	16.00 (0.63)	76.20 (3.00)	SR-20014 ②
2	35.56 (1.40) - 40.64 (1.60)		49.02 (1.93)	52.32 (2.06)	16.00 (0.63)	76.20 (3.00)	SR-20016 ②
2	40.64 (1.60) - 45.72 (1.80)		49.02 (1.93)	52.32 (2.06)	16.00 (0.63)	76.20 (3.00)	SR-20018 ②
2-1/2	38.10 (1.50) - 45.72 (1.80)		61.98 (2.44)	63.50 (2.50)	28.70 (1.13)	103.12 (4.06)	SR-25018 ②
2-1/2	45.72 (1.80) - 53.34 (2.10)		61.98 (2.44)	63.50 (2.50)	28.70 (1.13)	103.12 (4.06)	SR-25021 ②
2-1/2	53.34 (2.10) - 60.96 (2.40)		61.98 (2.44)	63.50 (2.50)	28.70 (1.13)	103.12 (4.06)	SR-25024 ②
3	38.10 (1.50) - 45.72 (1.80)		61.98 (2.44)	63.50 (2.50)	28.70 (1.13)	103.12 (4.06)	SR-30018 ②
3	45.72 (1.80) - 53.34 (2.10)		61.98 (2.44)	63.50 (2.50)	28.70 (1.13)	103.12 (4.06)	SR-30021 ②
3	53.34 (2.10) - 60.96 (2.40)		61.98 (2.44)	63.50 (2.50)	28.70 (1.13)	103.12 (4.06)	SR-30024 ②

① Remove enough jacket to get conductors through Throat I.D.

② UL Listed NEMA 4, 6 and 12 when installed into a NPT threaded entry or UL Listed conduit hub.

Gold Seal Strain Relief Connectors

NEC/CEC:
Listed for Ordinary Locations

Features

- Tapered threaded male hub NPT.
- Watertight/Oiltight.
- UL Listed NEMA 4 and 6 when installed into a NPT threaded entry or UL Listed conduit hub (sizes 1 1/4" and larger require thread sealant).
- Rated at +90 °C (+194 °F).

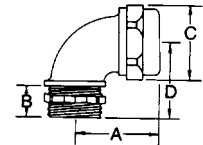
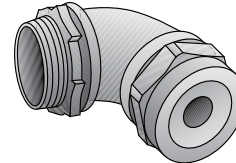
Standard Materials

- Malleable iron
- Grommets – PVC

Standard Finishes

- Zinc plated

Illustrated Dimensions



90° Connector
Type SR9-502

NEC/CEC Certifications and Compliances

- UL Standard: ANSI/UL 514B
- UL Listed: E-14817
- CSA Standard: C22.2 No. 18
- CSA Certified: 009795
- Fed. Spec: Commercial Item Description A-505-52

Hub Size (Inches)	Cable Range Millimeters (Inches) Dia. Over Jacket		Dimensions in Millimeters (Inches)					Catalog Number
	Min.	Max.	Throat I.D.	A	B	C	D	
1/2	2.54 (0.10) - 5.08 (0.20)		12.70 (0.50)	35.05 (1.38)	11.18 (0.44)	26.92 (1.06)	26.92 (1.06)	SR9-502 ②
1/2	5.08 (0.20) - 7.62 (0.30)		12.70 (0.50)	35.05 (1.38)	11.18 (0.44)	26.92 (1.06)	26.92 (1.06)	SR9-503 ②
1/2	7.62 (0.30) - 10.16 (0.40)		12.70 (0.50)	35.05 (1.38)	11.18 (0.44)	26.92 (1.06)	26.92 (1.06)	SR9-504 ②
1/2	11.68 (0.46) - 14.22 (0.56)		12.70 (0.50)	35.05 (1.38)	11.18 (0.44)	26.92 (1.06)	26.92 (1.06)	SR9-505 ②
1/2	12.70 (0.50) - 15.24 (0.60)		15.49 (0.61)	38.10 (1.50)	12.70 (0.50)	35.05 (1.38)	30.23 (1.19)	SR9-506 ②
1/2	15.24 (0.60) - 17.78 (0.70)		15.49 (0.61)	38.10 (1.50)	12.70 (0.50)	35.05 (1.38)	30.23 (1.19)	SR9-507 ① ②
3/4	2.54 (0.10) - 5.08 (0.20)		20.32 (0.80)	45.97 (1.81)	11.18 (0.44)	35.05 (1.38)	36.58 (1.44)	SR9-752
3/4	5.08 (0.20) - 7.62 (0.30)		20.32 (0.80)	45.97 (1.81)	11.18 (0.44)	35.05 (1.38)	36.58 (1.44)	SR9-753
3/4	7.62 (0.30) - 10.16 (0.40)		20.32 (0.80)	45.97 (1.81)	11.18 (0.44)	35.05 (1.38)	36.58 (1.44)	SR9-754 ②
3/4	10.16 (0.40) - 12.7 (0.50)		20.32 (0.80)	45.97 (1.81)	11.18 (0.44)	35.05 (1.38)	36.58 (1.44)	SR9-755 ②
3/4	12.7 (0.50) - 15.24 (0.60)		20.32 (0.80)	45.97 (1.81)	11.18 (0.44)	35.05 (1.38)	36.58 (1.44)	SR9-756 ②
3/4	15.24 (0.60) - 17.78 (0.70)		20.32 (0.80)	45.97 (1.81)	11.18 (0.44)	35.05 (1.38)	36.58 (1.44)	SR9-757 ②
3/4	17.78 (0.70) - 20.32 (0.80)		20.83 (0.82)	47.75 (1.88)	14.22 (0.56)	41.40 (1.63)	38.10 (1.50)	SR9-758 ②
1	2.54 (0.10) - 5.08 (0.20)		24.13 (0.95)	50.80 (2.00)	12.70 (0.50)	41.40 (1.63)	39.62 (1.56)	SR9-1002
1	5.08 (0.20) - 7.62 (0.30)		24.13 (0.95)	50.80 (2.00)	12.70 (0.50)	41.40 (1.63)	39.62 (1.56)	SR9-1003
1	7.62 (0.30) - 10.16 (0.40)		24.13 (0.95)	50.80 (2.00)	12.70 (0.50)	41.40 (1.63)	39.62 (1.56)	SR9-1004
1	10.16 (0.40) - 12.7 (0.50)		24.13 (0.95)	50.80 (2.00)	12.70 (0.50)	41.40 (1.63)	39.62 (1.56)	SR9-1005
1	12.7 (0.50) - 15.24 (0.60)		24.13 (0.95)	50.80 (2.00)	12.70 (0.50)	41.40 (1.63)	39.62 (1.56)	SR9-1006 ②
1	15.24 (0.60) - 17.78 (0.70)		24.13 (0.95)	50.80 (2.00)	12.70 (0.50)	41.40 (1.63)	39.62 (1.56)	SR9-1007 ②
1	17.78 (0.70) - 20.32 (0.80)		24.13 (0.95)	50.80 (2.00)	12.70 (0.50)	41.40 (1.63)	39.62 (1.56)	SR9-1008 ②
1	20.32 (0.80) - 22.86 (0.90)		24.13 (0.95)	50.80 (2.00)	12.70 (0.50)	41.40 (1.63)	39.62 (1.56)	SR9-1009 ②
1	22.86 (0.90) - 25.4 (1.00)		24.13 (0.95)	50.80 (2.00)	12.70 (0.50)	41.40 (1.63)	39.62 (1.56)	SR9-10010 ① ②
1-1/4	22.86 (0.90) - 25.4 (1.00)		27.94 (1.10)	68.33 (2.69)	16.00 (0.63)	49.28 (1.94)	54.1 (2.13)	SR9-12510 ②
1-1/4	25.4 (1.00) - 30.48 (1.20)		27.94 (1.10)	68.33 (2.69)	16.00 (0.63)	49.28 (1.94)	54.1 (2.13)	SR9-12512 ① ②
1-1/2	25.4 (1.00) - 30.48 (1.20)		35.31 (1.39)	74.68 (2.94)	16.00 (0.63)	60.45 (2.38)	57.15 (2.25)	SR9-15012 ②
1-1/2	30.48 (1.20) - 35.56 (1.40)		35.31 (1.39)	74.68 (2.94)	16.00 (0.63)	60.45 (2.38)	57.15 (2.25)	SR9-15014 ① ②
2	30.48 (1.20) - 35.56 (1.40)		44.96 (1.77)	92.20 (3.63)	17.53 (0.69)	76.20 (3.00)	77.72 (3.06)	SR9-20014 ②
2	35.56 (1.40) - 40.64 (1.60)		44.96 (1.77)	92.20 (3.63)	17.53 (0.69)	76.20 (3.00)	77.72 (3.06)	SR9-20016 ②
2	40.64 (1.60) - 45.72 (1.80)		44.96 (1.77)	92.20 (3.63)	17.53 (0.69)	76.20 (3.00)	77.72 (3.06)	SR9-20018 ① ②

① Remove enough jacket to get conductors through Throat I.D.

② UL Listed NEMA 4, 6 and 12 when installed into a NPT threaded entry or UL Listed conduit hub.