

EMT/Rigid Clampbacks

Malleable Iron

Features

- Extensive size range for multiple specifications

Applications

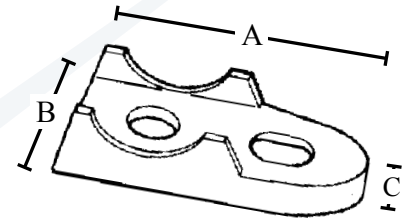
- Indoor or outdoor use
- Use to provide spacing between mounting surface and EMT and Rigid conduit

Standard Material

- Malleable iron

Standard Finish

- Zinc plated



Catalog Number	UPC	Size	Unit Carton	Ship Case	Weight/Case	A	Inches B	C
481	14510	1/2"	25	250	16	2.06	1.00	.50
482	14520	3/4"	25	250	22	2.38	1.06	.50
483	14530	1"	25	250	35	2.94	1.25	.56
484	14540	1-1/4"	10	100	21	3.50	1.88	.75
485	14550	1-1/2"	10	100	27	3.81	1.44	.81
486	14560	2"	5	50	22	4.75	1.94	1.00
487	14570	2-1/2"	---	25	14	5.75	2.44	.75
488	14580	3"	---	10	9	6.69	2.63	.88
489	14590	3-1/2"	---	10	14	7.13	2.88	1.06
489A	14600	4"	---	10	18	8.88	3.06	1.06
489B	14601	5"	---	10	25	10.13	3.75	.60
489C	14602	6"	---	10	30	12.19	4.00	.75