

# EMT/Rigid Clampbacks

## Malleable Iron

### Features

- Extensive size range for multiple specifications

### Applications

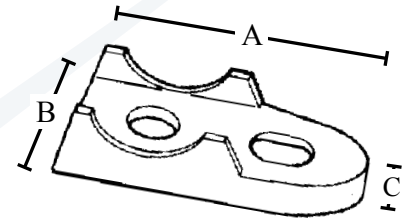
- Indoor or outdoor use
- Use to provide spacing between mounting surface and EMT and Rigid conduit

### Standard Material

- Malleable iron

### Standard Finish

- Zinc plated



Catalog Number	UPC	Size	Unit Carton	Ship Case	Weight/Case	A	Inches B	C
<b>481</b>	14510	<b>1/2"</b>	25	250	16	2.06	1.00	.50
<b>482</b>	14520	<b>3/4"</b>	25	250	22	2.38	1.06	.50
<b>483</b>	14530	<b>1"</b>	25	250	35	2.94	1.25	.56
<b>484</b>	14540	<b>1-1/4"</b>	10	100	21	3.50	1.88	.75
<b>485</b>	14550	<b>1-1/2"</b>	10	100	27	3.81	1.44	.81
<b>486</b>	14560	<b>2"</b>	5	50	22	4.75	1.94	1.00
<b>487</b>	14570	<b>2-1/2"</b>	---	25	14	5.75	2.44	.75
<b>488</b>	14580	<b>3"</b>	---	10	9	6.69	2.63	.88
<b>489</b>	14590	<b>3-1/2"</b>	---	10	14	7.13	2.88	1.06
<b>489A</b>	14600	<b>4"</b>	---	10	18	8.88	3.06	1.06
<b>489B</b>	14601	<b>5"</b>	---	10	25	10.13	3.75	.60
<b>489C</b>	14602	<b>6"</b>	---	10	30	12.19	4.00	.75