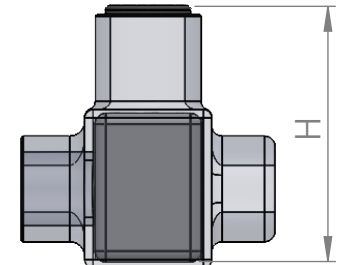
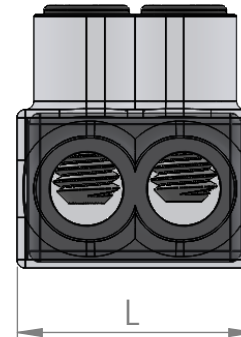
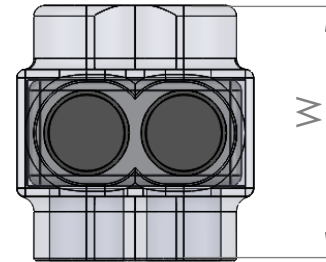
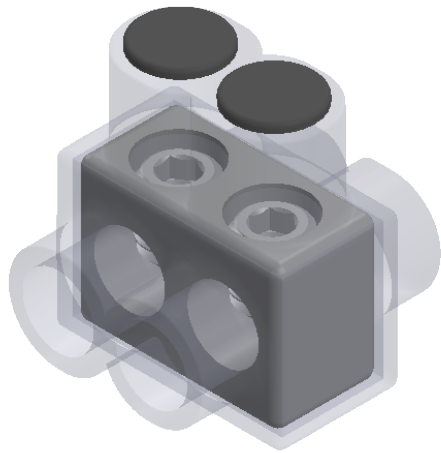



2

1

REVISIONS				
ZONE	REV.	DESCRIPTION	DATE	APPROVED



CAT. NO.	NO. OF PORTS	WIRE RANGE	LENGTH (L) (IN.)	WIDTH (W) (IN.)	HEIGHT (H) (IN.)	MAX. TORQUE VALUE (IN./LBS)	HEX/WRENCH SIZE (IN.)	STD. CTN. QTY.
IT-4C	2	4-14 AWG	1.120	1.180	1.380	45	Slotted	12
IT-1/0C	2	1/0-14 AWG	1.620	1.620	1.750	180	3/16	6
IT-3/0C	2	3/0-6 AWG	1.840	1.750	1.870	250	1/4	6
IT-250C	2	250 MCM-6 AWG	2.120	2.250	2.250	360	5/16	6
IT-350C	2	350 MCM-6 AWG	2.470	2.500	2.440	400	5/16	4
IT-500C	2	500 MCM - 4 AWG	2.810	2.870	2.940	450	5/16	4
IT-600C	2	600 MCM-6 AWG	2.340	2.940	3.050	550	5/16	4
IT-750C	2	750-250 MCM	3.480	3.500	3.500	550	3/8	2

PROPRIETARY AND CONFIDENTIAL THE INFORMATION CONTAINED IN THIS DRAWING IS THE SOLE PROPERTY OF NSI Industries LLC. ANY REPRODUCTION IN PART OR AS A WHOLE WITHOUT THE WRITTEN PERMISSION OF NSI Industries LLC IS PROHIBITED.	NAME	DATE	
	DRAWN	DR 11/18	
	CHECKED	GW 1/19	
	ENG APPR.		
	MFG APPR.		
INTERPRET GEOMETRIC TOLERANCING PER:	Q.A.		TITLE: Pre-Insulated Connectors IT Series: IT Product Family
MATERIAL	COMMENTS: TO ORDER NSI PRODUCTS CALL UNITED STATES (704) 439-2420 FOR PRODUCT INFO: www.nsiindustries.com		
FINISH			
DIMENSIONS ARE IN INCHES	SIZE A	DWG. NO. IT4 Assembly	REV
SCALE: 2:1		SW 2019	SHEET 1 OF 1



2

1

B

B

A

A