

### Industrial straight blade power devices features & benefits

Rugged high-strength thermoplastic construction

Neoprene gasket seals around cord for added terminal protection from external elements



Plug

Unique internal clamp design secures cord during assembly, reducing installation time



Connector

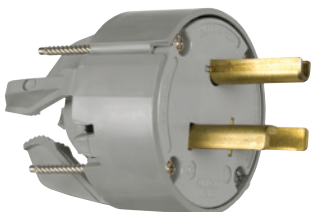
Tapered cord grip cover reduces cord snags



Angled plug versions have 4 possible positions for maximum convenience



Broad selection of flanged inlets accept #12 AWG to #4 AWG conductors



Quick-drive stainless steel assembly screws provide corrosion resistance and speed installation time

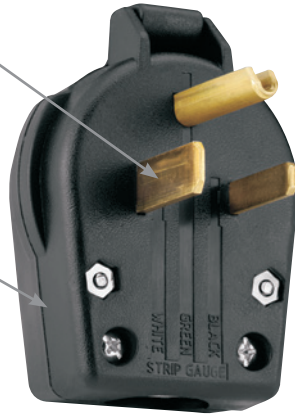


Variety of 30A, 50A and 60A configurations available

## Commercial straight blade power devices features & benefits

Universal plugs include blades for both 30A and 50A configurations of the same voltage

Terminals have pressure plates to protect wires



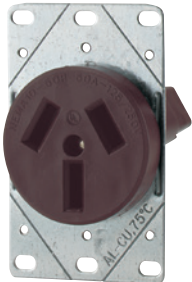
Plug

Patented lay-in terminals accept up to #4 AWG wire

Back features concentric knockouts and an adjustable cord clamp to allow wiring from back or bottom



Surface receptacle



Flush receptacles feature heavy gauge galvanized steel mounting strap and glass-reinforced nylon body



Broad selection of wallplates available for flush receptacle mounting



Surface receptacles can be wired for back or bottom wiring



Variety of 30A, 50A and 60A configurations available

Compliances, specifications and availability are subject to change without notice.

[www.eaton.com](http://www.eaton.com)  
[www.arrowhart.com](http://www.arrowhart.com)

# Straight blade power devices 20, 30, 50 & 60A



Rating: Amps V/AC	Receptacle/ plug NEMA configuration	Flush receptacles	Wallplate	Surface receptacle	Panel mount receptacle	Plugs	Angle plugs
-------------------------	---	----------------------	-----------	-----------------------	---------------------------	-------	-------------

### 3-pole, 4-wire grounding

20A 125/250V	 14-20R	 14-20P	Industrial: <b>5759</b> (Black)				
30A 125/250V Dryer	 14-30R	 14-30P	Commercial: <b>1257</b> (Black)	Standard size: <b>39CH, 68, 2068, 2168, 93221, 93227</b>	Commercial: <b>1225</b> (Black)	Industrial: <b>5746N</b> (Gray)	Commercial: <b>S21</b> (Black)
			Industrial: <b>5744N</b> (Black)	Mid-size: <b>5068, PJ703, PJ724</b>			Standard size: <b>69, 5169, 93223</b>
30A 3Ø 250V	 15-30R	 15-30P	Industrial: <b>8430N</b> (Black)	Standard size: <b>69, 5169, 93223</b>		Industrial: <b>8432N</b> (Gray)	Industrial: <b>8432AN</b> (Gray)
50A 125/250V Range	 14-50R	 14-50P	Commercial: <b>1258</b> (Black)	Standard size: <b>39CH, 68, 2068, 2168, 93221, 93227</b>	Commercial: <b>1212</b> (Black)	Commercial: <b>58</b> (Black)	Commercial: <b>S21</b> (Black)
			Industrial: <b>5754N</b> (Black)	Mid-size: <b>5068, PJ703, PJ724</b>			Standard size: <b>69, 5169, 93223</b>
50A 3Ø 250V	 15-50R	 15-50P	Industrial: <b>8450N</b> (Black)	Standard size: <b>69, 5169, 93223</b>		Industrial: <b>8450P</b> (Black)	Industrial: <b>8452N</b> (Gray)
60A 125/250V	 14-60R	 14-60P	Industrial: <b>9460N</b> (Black)	Standard size: <b>69, 5169, 93223</b>		Commercial: <b>60</b> (Black)	Commercial: <b>S20</b> (Black)
						Industrial: <b>9462N</b> (Gray)	Industrial: <b>9462AN</b> (Gray)
60A 3Ø 250V	 15-60R	 15-60P	Industrial: <b>8460N</b> (Black)	Standard size: <b>69, 5169, 93223</b>		Industrial: <b>AH8462N</b> (Gray)	Industrial: <b>AH8462AN</b> (Gray)

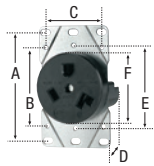
### 4-pole, 4-wire, non-grounding

30A 3ØY 120/208V	 18-30R	 18-30P				Industrial: <b>8332N</b> (Gray)	Industrial: <b>8332AN</b> (Gray)
50A 3ØY 120/208V	 18-50R	 18-50P				Industrial: <b>8352N</b> (Gray)	Industrial: <b>8352AN</b> (Gray)
60A 3ØY 120/208V	 18-60R	 18-60P	Industrial: <b>5515N</b> (Black)	Standard size: <b>69, 5169, 93223</b>		Industrial: <b>5517N</b> (Gray)	Commercial: <b>S19</b> (Black)
						Industrial: <b>4516AN</b> (Gray)	

Power device dimensional information: B-20; Specification information: B-25-B-27  
Compliances, specifications and availability are subject to change without notice.

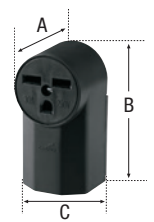
All products on this page are RoHS compliant – Page Q-30

### Flush receptacles



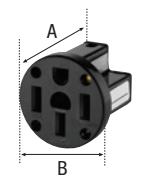
Family	A	B	C	D (Depth)	E	F (Face dia.)
30 & 1200 series	3.28" (83.3mm)	2.38" (60.5mm)	1.81" (46.0mm)	1.42" (36.1mm)	2.50" (63.5mm)	2.10" (53.5mm)
5000 & 7000 series	3.28" (83.3mm)	2.38" (60.5mm)	1.81" (46.0mm)	1.69" (42.9mm)	2.50" (63.5mm)	2.12" (53.8mm)
8000 series	3.28" (83.3mm)	2.38" (60.5mm)	1.81" (46.0mm)	1.69" (42.9mm)	—	2.38" (60.5mm)

### Surface receptacles



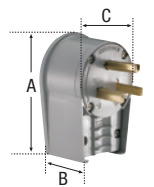
Family	A	B	C
100 & 1200 series	2.10" (53.3mm)	4.75" (120.7mm)	2.50" (63.5mm)

### Panel mount receptacles



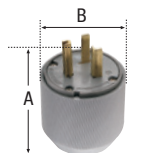
Family	A	B
58, 60	2.80" (71.1mm)	2.80" (71.1mm)
U1263	1.69" (42.9mm)	2.09" (53.1mm)

### Angled plugs



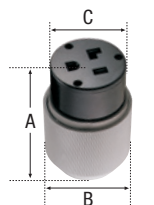
Family	A	B	C	Cord diameter
80 & 83	2.92" (74.2mm)	1.03" (26.2mm)	2.80" (71.1mm)	83: 0.64" (16.3mm) max. 80: 0.80" (20.3mm) max.
S41 & S42, S20 & S21, S19	3.37" (85.6mm)	1.38" (35.1mm)	2.87" (72.9mm)	S41 & S42: 1.10" (27.9mm) S20 & S21: 1.13" (28.7mm) S19: 1.00" (25.4mm)
4500AN, 5700AN, 7900AN, 8300AN, 8400AN, 9300AN, 9400AN, AH8400AN series	4.30" (109.2mm)	1.88" (47.8mm)	3.00" (76.2mm)	0.56-1.31" (14.2-33.3mm)

### Plugs



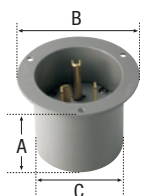
Family	A	B	Cord diameter
4500N, 5500N, 5700N, 8300N, 8400N, 9300N, 9400N, AH8400N series	3.34 - 3.81" (84.8 - 96.8mm) varies with diameter of cord	3.12" (79.2mm)	0.43 - 1.31" (10.8 - 33.3mm)

### Connectors



Family	A	B	C	Cord diameter
6700N, 9300N, 9500N series	4.71-5.19" (119.6-131.8mm) varies with diameter of cord	3.12" (79.2mm)	2.59" (65.8mm)	0.43-1.31" (10.8 - 33.3mm)

### Flanged inlets



Family	A	B	C
4500NFI, 5700NFI, 9300NFI series	2.72" (69.1mm)	3.75" (95.3mm)	2.81" (71.4mm)

Compliances, specifications and availability are subject to change without notice.