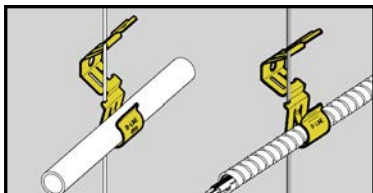


# Conduit & cable

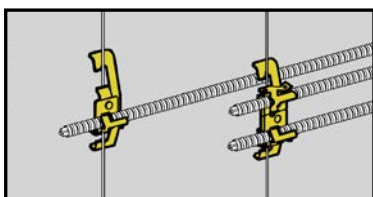


## Flex-Rite™ Cable/Conduit To Wire Fasteners



- Can be used in place of batwings.
- Will not bend or deform hanger wire.
- Attaches to #12 - #8 wire and 1/4" plain rod.
- Accommodates MC, AC, 3/8" FMC or 1/2" EMT.
- Cable can be installed before or after attachment to wire.
- Static Load Capacity:  
BX-8 - 20 Lbs.  
BX-18 - 30 Lbs.

UPC/Part Number	Catalog Number	Cable/Conduit Size	Box Qty.
78101101402	<b>BX-8</b>	.375" to 706" O.D.	100
78101102943	<b>BX-18</b>	.706" to 1.380" O.D.	100
78101101685	<b>BX-8B</b>	Bulk Packed In Fiber Barrels	4000



## Cable To Rod Fasteners



BX4-W2

BX4M-W2

- Assemblies support MC, AC, sizes 14/2 through 10/3 or 3/8 FMC.
- W2 series attaches to 1/8" thru 3/8" flanges or #12 wire thru 1/4" plain or threaded rod.
- W6 series attaches to 3/8" thru 7/16" flanges or 3/8" plain or threaded rod.

UPC/Part Number	Catalog Number	Description	Box Qty.
78101101219	<b>BX4-W2</b>	Single Runs	100
78101101189	<b>BX4M-W2</b>	Double Runs	100
78101195517	<b>BX4-W6</b>	Single Runs	100
78101195518	<b>BX4M-W6</b>	Double Runs	100

Read safety/installation instruction sheets in packages before use.