

Anchorage Connectors



Minimum breaking strength of 5,000 lbs.

Compatible for use with MSA fall arrest and confined space entry/retrieval components.

General Purpose



Anchorage Connector Strap

- Standard 5-ft. length; custom lengths available
- D-ring on one end, sewn hoop on other end

PART NO.

505282



Double D-ring Anchorage Connector Strap

- Standard 5-ft. length; custom lengths available
- Standard D-ring on one end, large D-ring on other end

PART NO.

10023490



Suretyman™ Anchorage Sling

- 1-in. nylon tube webbing sewn into continuous loop
- Available in 2-ft., 4-ft. and 6-ft. lengths
- Can be hitched to anchorage point using various configurations

PART NO.	Description
SFP2267402	2-ft. sling
SFP2267404	4-ft. sling
SFP2267406	6-ft. sling



Double D-ring Anchorage Connector Strap

- Standard lengths of 3-ft., 4-ft. and 6-ft.
- Standard D-ring on one end, large D-ring on other end
- Integral wear pad

PART NO.	Description
SFP2267503	3-ft. strap
SFP2267504	4-ft. strap
SFP2267506	6-ft. strap



Thermatek Anchorage Connector Strap

- Kevlar webbing and stitching
- Contrasting colors of webbing and stitching offer easier inspection
- Includes replaceable wear pad to protect webbing from abrasion
- Heat and burn resistant

PART NO.

10023487



Anchorage Cable Sling

- Standard lengths of 4-ft. and 6-ft.; custom lengths available
- Vinyl-coated
- 1/4" galvanized cable

PART NO.	Description
SFP3267504	4-ft. sling
SFP2267506	6-ft. sling



PointGuard™ Anchorage Connector Strap—Concrete Construction Model

- Economical
- 400 lbs. (182 kg) capacity
- Standard length of 4-ft.
- Includes protective sheath
- With steel D-ring (also available without D-ring)
- Meets all applicable OSHA regulations

PART NO.	Description
10042794	Concrete
10094384	Concrete, box of 50



PointGuard Anchorage Connector Strap—Residential Construction Model

- Economical
- 400 lbs. (182 kg) capacity
- Standard length of 3-ft.
- With steel D-ring (also available without D-ring)
- Meets all applicable OSHA regulations and ANSI Z359.1

PART NO.	Description
10042792	Residential



Anchorage Connector Extensions

- Standard 5-ft. length
- Vinyl-coated
- 1/4" galvanized cable

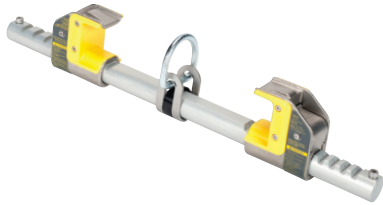
PART NO.

10023490

WE KNOW WHAT'S AT STAKE.

Anchorage Connectors

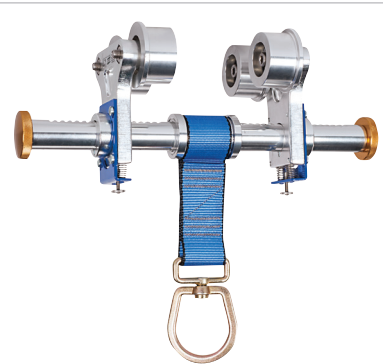
Steel—Application: Beams and Rails



Workman® FP Stryder™ Anchorage Connector

- Easy, single-hand installation
- Low friction wear pads with Teflon enable effortless gliding along beam flange
- Lightweight—only 4.5 lbs.
- Integral load indicator alerts user if unit has been exposed to a fall
- Versatile design: mount overhead or at worker's feet
- Easy to use, push-button adjustment —no pins to lose!
- 400-lb. working capacity

PART NO.	Description
10144431	Standard version
10144432	XL version



Beam Trolley

- Provides horizontal mobility
- Fits all beams

PART NO.
10176450



Rail-Slider™

- Provides fall protection during horizontal movement on railway bridges
- Quick and easy installation
- For 80–136-lb. rail
- Other sizes available

PART NO.
SFPRS6000



D-Plate Anchorage Connector

- Provides permanent anchorage point
- Bolts to beams or columns
- Also available with 8" x 8" backplate of black anodized aluminum, galvanized steel or stainless steel for attachment to concrete walls

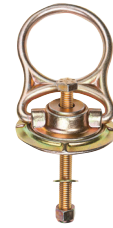
PART NO.
506632



Bolt D-ring with Hole

- Permanent anchorage connector
- Attaches to bottom of I-beam flange; user supplies bolt
- Designed for horizontal installation

PART NO.
10003213



5K MEGA Swivel

- Max. capacity: 5,000 lbs./22kN

PART NO.	Description
10144944	Steel model



10K MEGA Swivel (D-ring only)

- Max. capacity: 5,000 lbs./22kN
- Requires PN 10144955 to connect to steel

PART NO.	Description
10129084	Steel model

Replacement Nut Bolt and Washer

- For 5,000-lb. or 10,000-lb. MEGA Swivel

PART NO.	Description
10144947	5K bolt assembly
10144955	10K bolt assembly



Weld-on Puck

- 3" diameter x 1" thick
- Accessory for MEGA Swivel

PART NO.	Description
10144958	Includes puck and bolt. MEGA Swivel sold separately.

Concrete



Removable Concrete Anchors

- Quickly and easily removed and reinstalled in another location
- Compact and lightweight
- Durable stainless steel and aluminum construction
- 400-lb. capacity
- 2 models: 5,000-lb. version (5K) and 10,000-lb. (10K) version
- 10,000-lb. version can be used to anchor MSA Dyna-Line® or SureLine™ Horizontal Lifelines
- Can be used to anchor MSA Gravity™ Horizontal Lifelines

PART NO.	Description
10081594	5K Removable Concrete Anchor
10081570	10K Removable Concrete Anchor



5K MEGA Swivel

- Max. capacity: 5,000 lbs./22kN

PART NO.	Description
10144945	Concrete model



10K MEGA Swivel (D-ring only)

- Max. capacity: 5,000 lbs./22kN
- Requires PN 10144956 to connect to concrete

PART NO.	Description
10129085	Concrete model

Concrete Bolt Assembly

- For 5,000-lb. or 10,000-lb. MEGA Swivel

PART NO.	Description
10144948	5K bolt assembly
10144956	10K bolt assembly



MEGA Swivel Hybrid

- Max capacity: 10,000 lbs./44kN.
- MEGA Swivel technology
- Designed for repeated use; durable and 100% retrievable

PART NO.
10144957

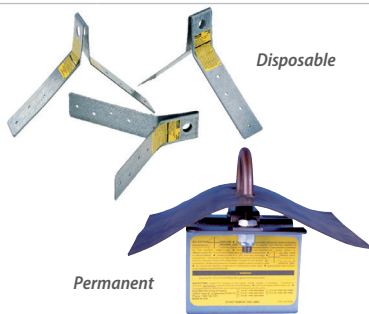


PointGuard Anchorage Connector Strap—Concrete Construction Model

- Economical
- 400 lbs. (182 kg) capacity
- Standard length of 4 ft.
- Includes protective sheath
- Available with or without steel D-ring
- Meets all applicable OSHA regulations

PART NO.	Description
10042794	Concrete (with D-Ring)

Roof



Roof Anchors

- All-steel construction
- Fits all pitches of roof trusses or rafters
- Easy to install without special tools

PART NO.	Description
416068	Disposable
10016468	Permanent



Workman Reusable Roof Anchor

- Fits up to 12 x 12 roof pitch
- Fastens with screws or nails

PART NO.
10102686








PointGuard Anchorage Connector Strap—Residential Construction Model

- Economical
- 400 lbs. (182 kg) capacity
- Standard length of 3 ft.
- Available with or without steel D-ring
- Meets all applicable OSHA regulations and ANSI Z359.1

PART NO.	Description
10042792	Residential (with D-ring)

Carabiners

MSA offers many carabiners for most applications. All carabiners have minimum breaking strength of 5,000 lbs.

				
<ul style="list-style-type: none"> • 9/16" (14 mm) gate opening • Auto-locking • Steel • ANSI Z, CSA 	<ul style="list-style-type: none"> • 1" (25 mm) gate opening • Auto-locking • Steel • ANSI Z, CSA 	<ul style="list-style-type: none"> • 1" (25 mm) gate opening • Auto-locking • Aluminum • ANSI Z, CSA 	<ul style="list-style-type: none"> • 1.2" (32 mm) gate opening • Auto-locking • Steel • ANSI Z, CSA 	<ul style="list-style-type: none"> • 2.1" (53 mm) gate opening • Auto-locking • Steel • ANSI Z, CSA
<p>PART NO. 10089205</p>	<p>PART NO. 10089207</p>	<p>PART NO. SRCA883</p>	<p>PART NO. SRCC642</p>	<p>PART NO. 10089209</p>

Note: This Bulletin contains only a general description of the products shown. While product uses and performance capabilities are generally described, the products shall not, under any circumstances, be used by untrained or unqualified individuals. The products shall not be used until the product instructions/user manual, which contains detailed information concerning the proper use and care of the products, including any warnings or cautions, have been thoroughly read and understood. Specifications are subject to change without prior notice.

MSA operates in over 40 countries worldwide. To find an MSA office near you, please visit [MSAsafety.com/offices](https://www.msasafety.com/offices).